

811 W 7th

The Fine Arts Building



ICONIC CREATIVE OFFICE AVAILABLE NOW

Exclusively listed by:

Gibran Begum

Executive Vice President
gbegum@naicapital.com
Direct: 310-806-6109
Mobile: 310-922-0756
DRE Lic#: 01455990

NAI Capital Commercial

West Los Angeles
11150 Santa Monica Blvd.
Suite 1550
Los Angeles, CA 90025
310-806-6100
naicapital.com

Downtown Los Angeles
707 Wilshire Blvd.
Suite 5125
Los Angeles, CA 90017
213-632-7700
info@naicapital.com

finearts811.com

NAI Capital
COMMERCIAL REAL ESTATE SERVICES, WORLDWIDE


MANCHESTER
CAPITAL MANAGEMENT



HIGHLIGHTS

Features include creative plug-in play office space with original '20s exposed brick walls, contemporary mix of concrete & wood flooring and exposed ceiling areas.

Suite 700: ±9,348 RSF



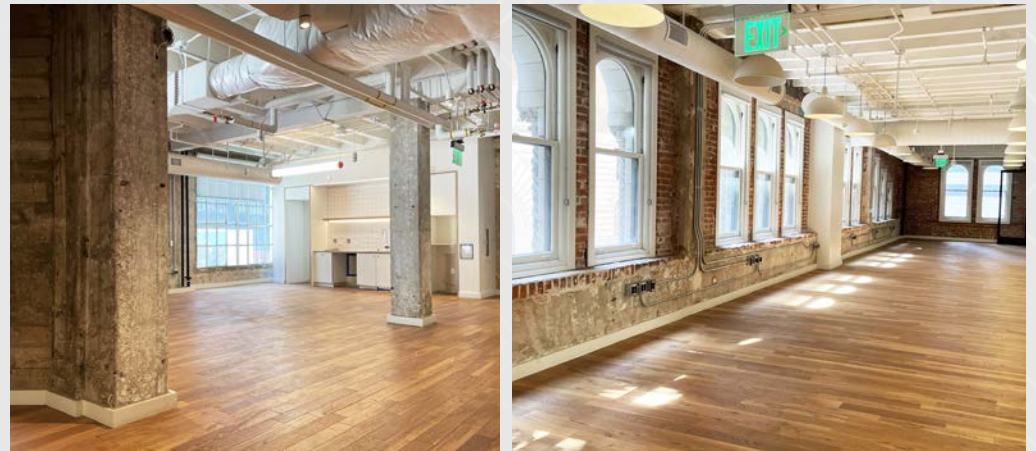
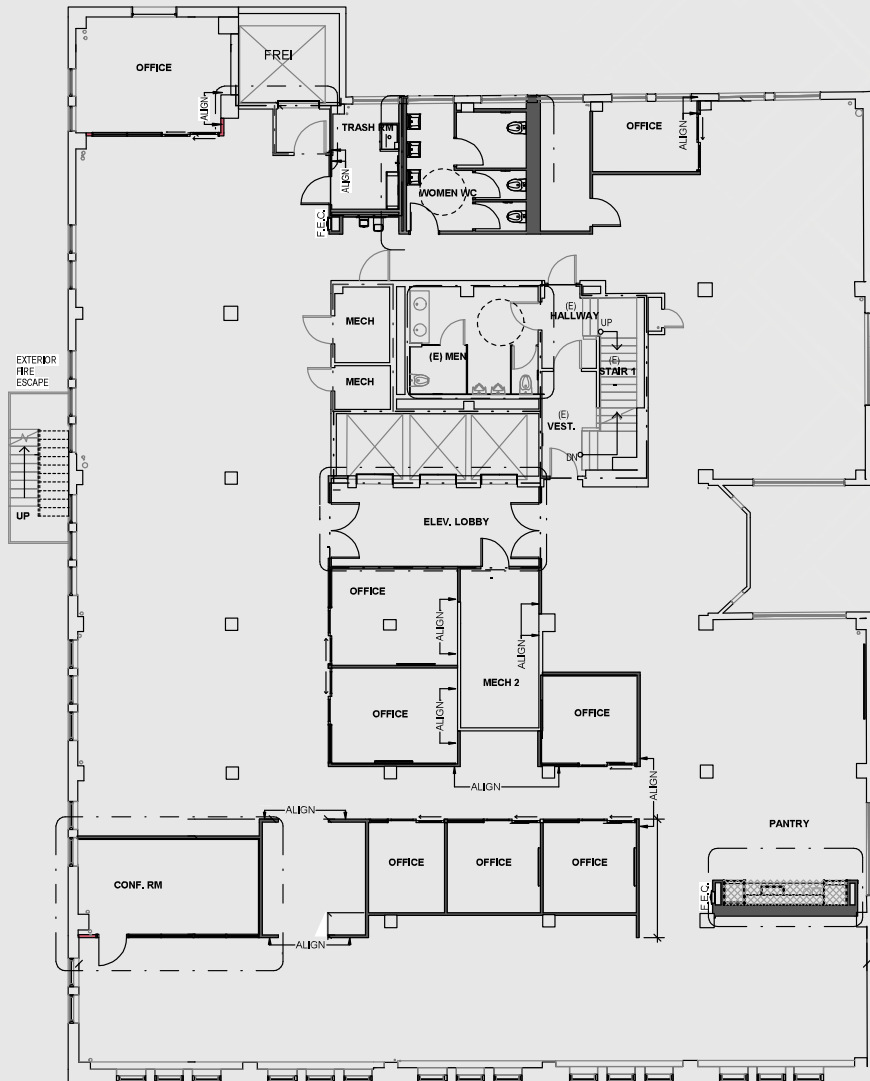
Suite 400: ±9,348 RSF



Suite 300: ±9,480 RSF



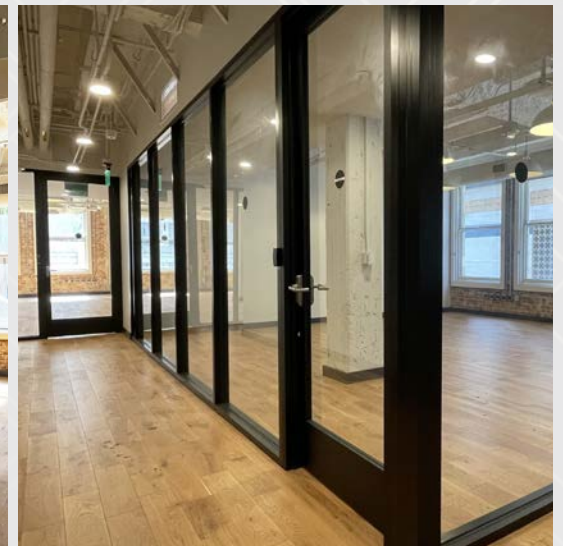
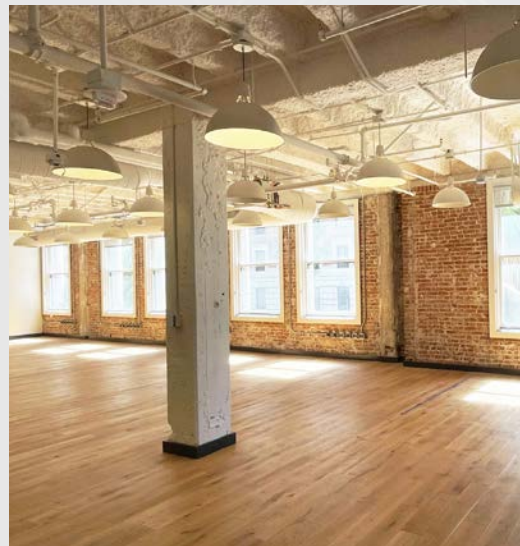
3RD FLOOR



**Note: actual floor layout may vary slightly from the plans below*



4TH FLOOR



**Note: actual floor layout may vary slightly from the plans below*



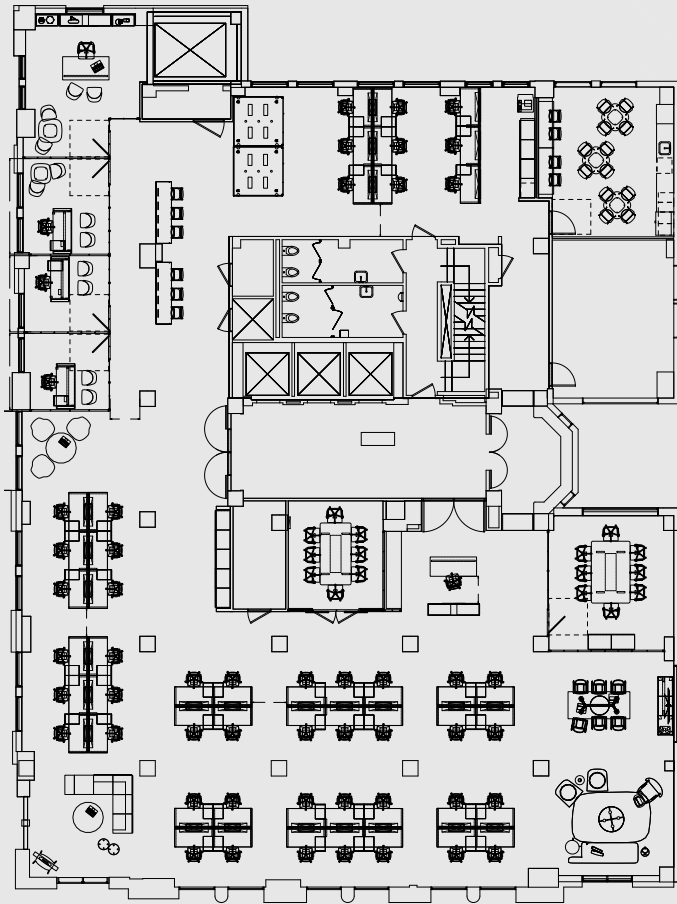
811 W 7TH - THE FINE ARTS BUILDING | 4

NAICapital
COMMERCIAL REAL ESTATE SERVICES, WORLDWIDE

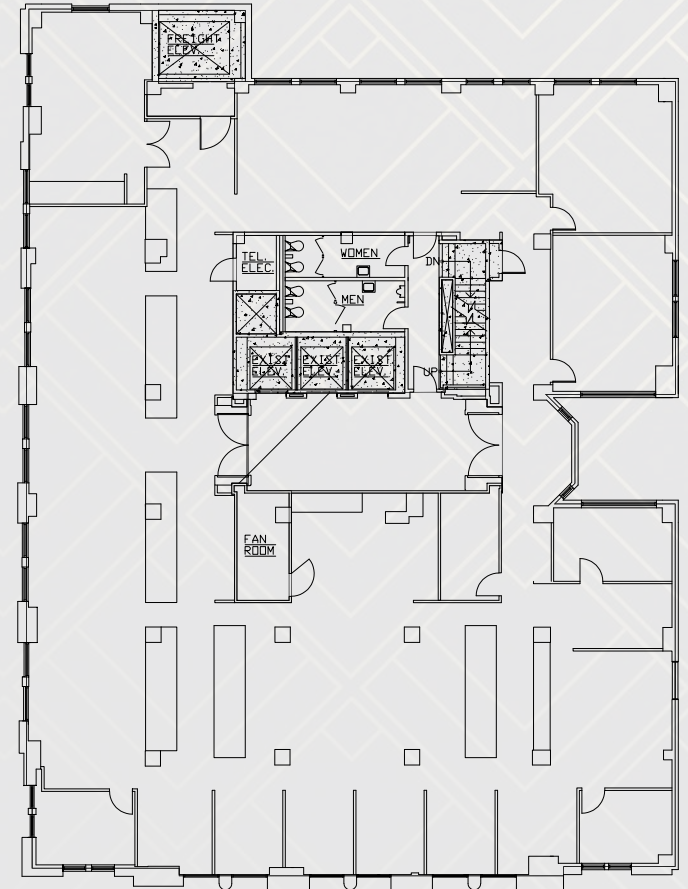
MANCHESTER
CAPITAL MANAGEMENT

7TH FLOOR

Hypothetical Layout

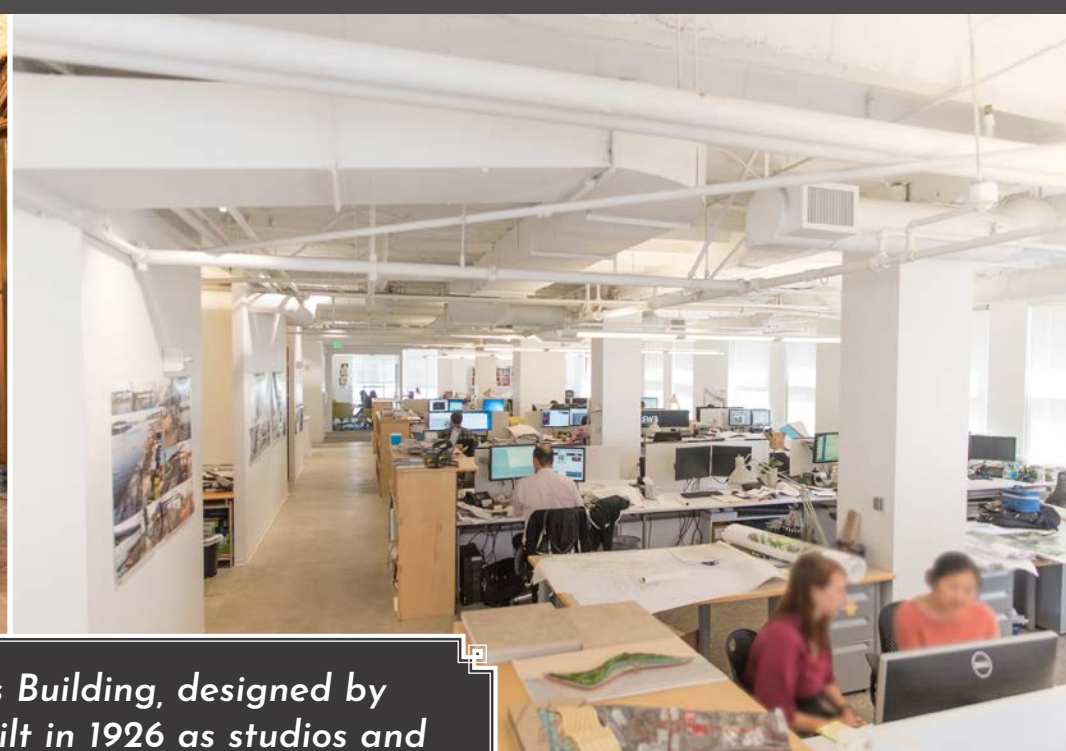
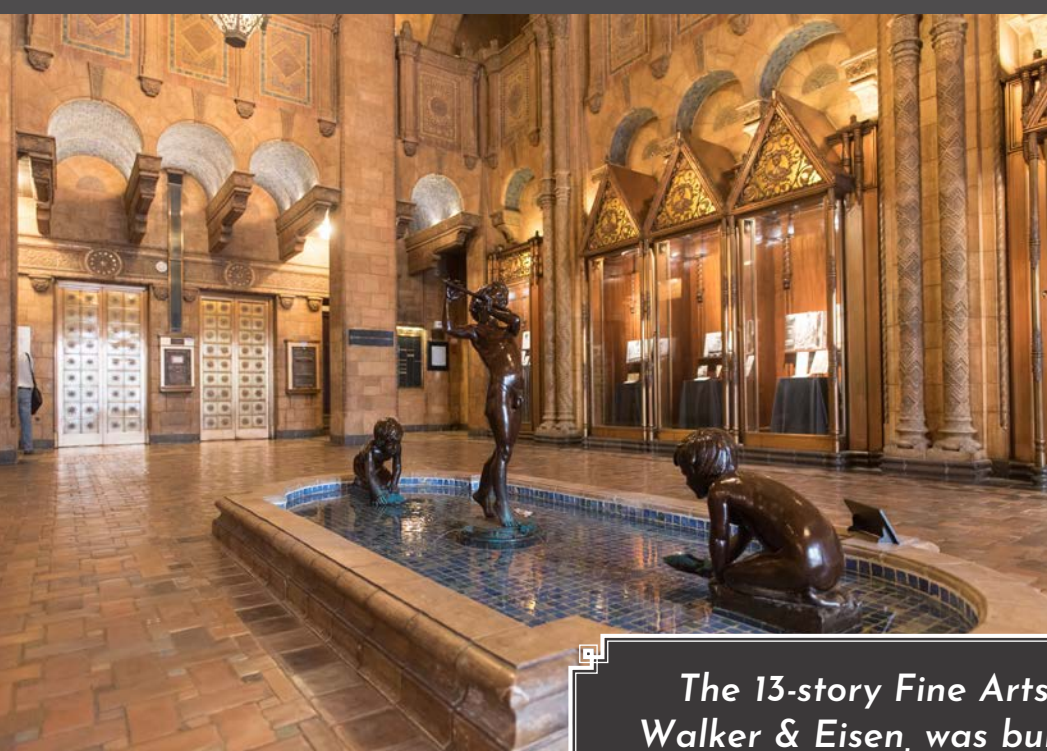


Current As-Built Layout

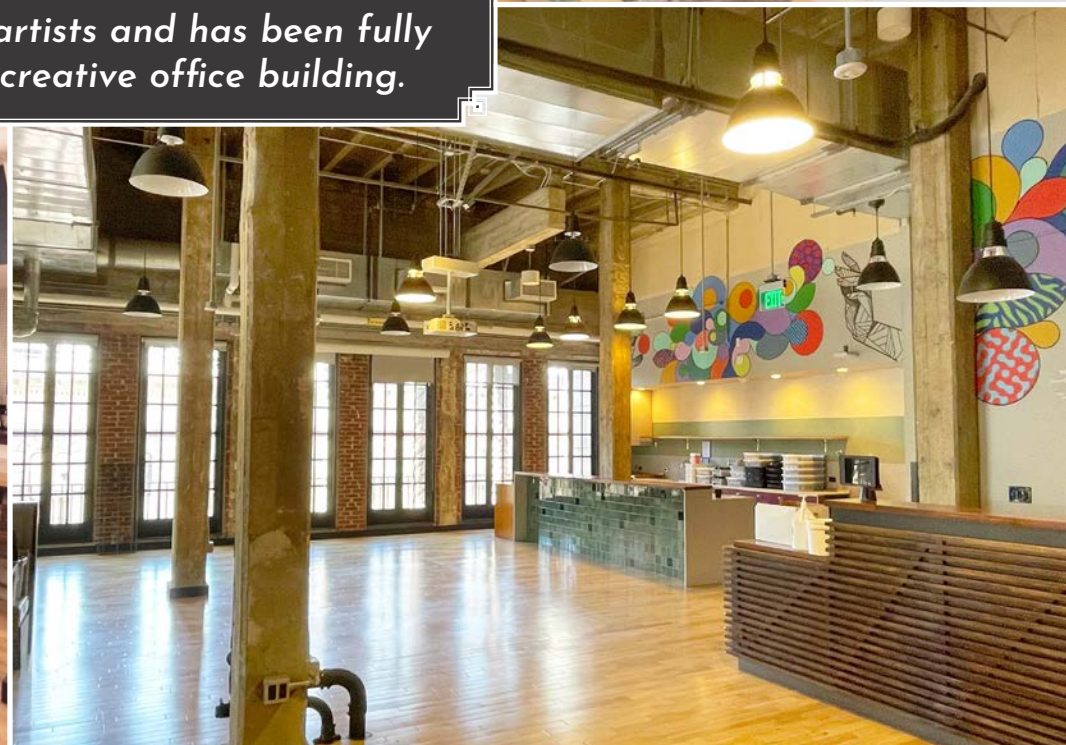
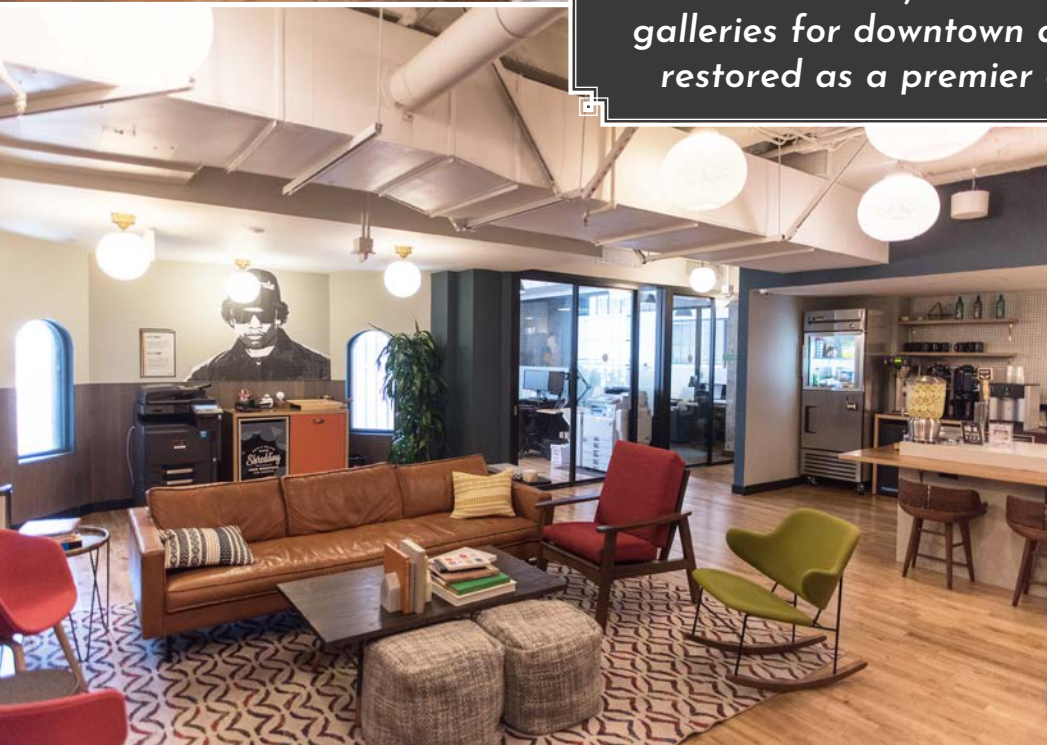


**Note: actual floor layout may vary slightly from the plans below*





The 13-story Fine Arts Building, designed by Walker & Eisen, was built in 1926 as studios and galleries for downtown artists and has been fully restored as a premier creative office building.



LOCATION MAP





811 W 7th

The Fine Arts Building

**ICONIC CREATIVE OFFICE
AVAILABLE NOW**

Exclusively listed by:

Gibran Begum

Executive Vice President
gbegum@naicapital.com
Direct: 310-806-6109
Mobile: 310-922-0756
DRE Lic#: 01455990

NAI Capital Commercial

West Los Angeles
11150 Santa Monica Blvd.
Suite 1550
Los Angeles, CA 90025
310-806-6100

Downtown Los Angeles
707 Wilshire Blvd.
Suite 5125
Los Angeles, CA 90017
213-632-7700

NAI Capital
COMMERCIAL REAL ESTATE SERVICES. WORLDWIDE



MANCHESTER
CAPITAL MANAGEMENT

No warranty, express or implied, is made as to the accuracy of the information contained herein. This information is submitted subject to errors, omissions, change of price, rental or other conditions, withdrawal without notice, and is subject to any special listing conditions imposed by our principals. Cooperating brokers, buyers, tenants and other parties who receive this document should not rely on it, but should use it as a starting point of analysis, and should independently confirm the accuracy of the information contained herein through a due diligence review of the books, records, files and documents that constitute reliable sources of the information described herein.

Logos are for identification purposes only and may be trademarks of their respective companies. NAI Capital, Inc. Cal DRE Lic. #02130474.