

±3,324 Acres
±2.75 Miles of Highway 62 Frontage

Rice Airfield *Solar Renewable Energy Site*



Rice Airfield - Solar Renewable Energy Site

Previously Approved for CSP Solar site with molten salt energy storage: <http://www.energy.ca.gov/sitingcases/ricesolar>



- Concentrated Solar Power (CSP) plant
- Power Tower / Parabolic Trough power plant
- Photo Voltaic (PV) power production
- Hydrogen Production Facility
- Geo-Thermal Power Production
- Bio-Diesel Production
- Industrial Distribution Facility
- Trucking Transportation Hub
- Rail/Truck Terminals
- Storage Facilities

Resort/Master Planned Developments, Mobile Home Parks, Farming,
Educational/ Correctional Institutions, Recreational Vehicle Parks,
Trailer and Boat Storage Facilities.

NAICapital

Commercial Real Estate Services, Worldwide.

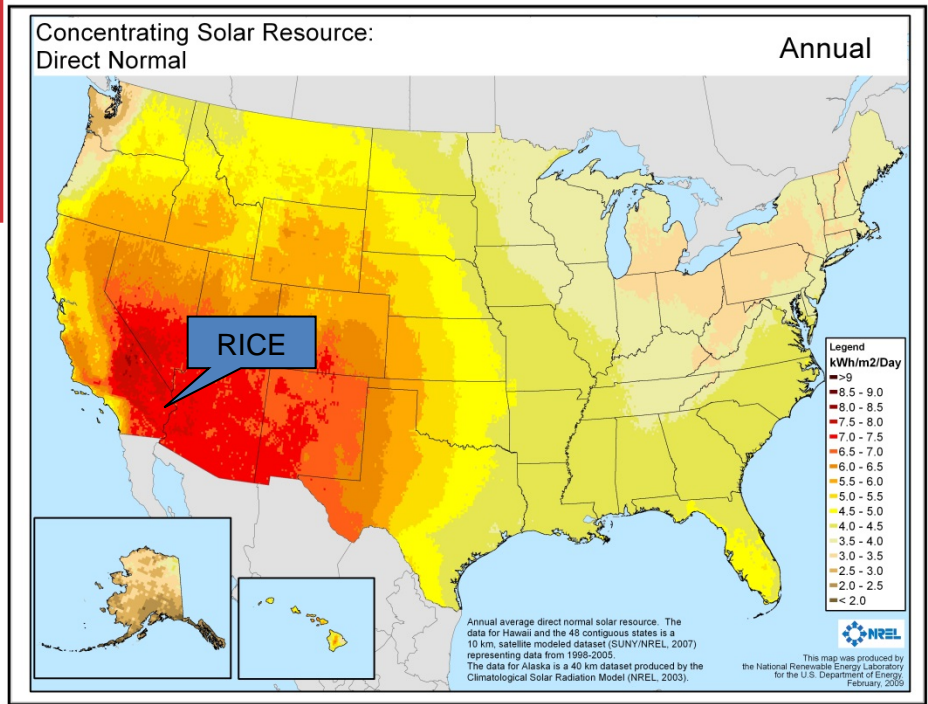
No warranty, express or implied, is made as to the accuracy of the information contained herein. This information is submitted subject to errors, omissions, change of price, rental or other conditions, withdrawal without notice, and is subject to any special listing conditions imposed by our principals. Cooperating brokers, buyers, tenants and other parties who receive this document should not rely on it, but should use it as a starting point of analysis, and should independently confirm the accuracy of the information contained herein through a due diligence review of the books, records, files and documents that constitute reliable sources of the information described herein.

For information, please contact your exclusive listing agent

Scott Lisk
Senior Vice President
951.346.0805
NAI Lic. #00806840
SVE Lic. #00901789

800 North Haven
Suite 400
Ontario, CA 91764
tel 945 2339 | www.naicapital.com
slisk@naicapital.com

Rice Airfield Solar Renewable Energy Site



Previously Approved for CSP Solar site with molten salt energy storage: <http://www.energy.ca.gov/sitingcases/ricesolar> During the 5 years that SolarReserve had the property under contract, they completed an AFC and received all necessary permits and approvals. Hundreds of documents with a wealth of information are available online on the CEC's website at <http://www.energy.ca.gov/sitingcases/ricesolar/documents/index.html>

LOCATION: RICE, Riverside County CA. - Riverside Thomas Guide page 391 L1 - L2

Located in the Southeastern Mojave Desert not far from the Southern California and Arizona Metropolitan area workforce Populations; the property encompasses 3,324 acres (5.2 square miles in area) with 2.75 miles of HIGHWAY 62 frontage; ideal for what could be one of the largest Renewable Energy/ Distribution facilities in the country. The property is relatively flat with a slight slope to the southeast

SOLAR DATA REFERENCE: Location using WGS-84 Data: Latitude: 34.03'59.11N- Longitude: 114.48'57.78W- Time Zone: Pacific Standard Time. Solar zones outlined on government web sites show that the property would be ideal for Solar Power Generation. Close proximity to high-power transmission lines.

WATER:

The owners have completed two (2) water wells, plentiful water available for any size solar energy production facility.

RAIL:

The site is rail accessible to the North American freight railway system that connects Canada, Mexico and the USA.

RAIL AMERICA would consider installing the tracks and spur system to service the property that would tie into their Midland Road Line and could supply flat bed and tank cars if needed. They have indicated that they have been contacted by companies (*that may be interested in purchasing or leasing portions of the property*); companies that would utilize the site for a Trucking Distribution Access point to the Las Vegas, Riverside, Arizona and Phoenix markets.

WIND: A check of the government web sites will confirm that the area is rated for wind generation.

ENVIRONMENTAL: US Army Corps of Engineers UST Recommendation for Closure Report indicates that the site is clean; tanks, pipes, foundations and related materials associated with the old air base have been removed from the site.

Assessor's Parcel Numbers: 801-042-004, 801-062-012 and 801-070-005

Offering Price: \$34,000,000.00/ +/- \$10,000 per acre ** OR POSSIBLE LEASE @ \$1,000 per acre/per year - minimum 10 years



No warranty, express or implied, is made as to the accuracy of the information contained herein. This information is submitted subject to errors, omissions, change of price, rental or other conditions, withdrawal without notice, and is subject to any special listing conditions imposed by our principals. Cooperating brokers, buyers, tenants and other parties who receive this document should not rely on it, but should use it as a starting point of analysis, and should independently confirm the accuracy of the information contained herein through a due diligence review of the books, records, files and documents that constitute reliable sources of the information described herein.

For information, please contact your exclusive listing agent

Scott Lisk
Senior Vice President
951.346.0805
NAI Lic. #00806840
SVE Lic. #00901789

800 North Haven
Suite 400
Ontario, CA 91764
tel 945 2339 | www.naicapital.com
slisk@naicapital.com

Rice Airfield
*Solar Renewable
Energy Site*

www.youtube.com/watch?v=jp70Kv-lxBA

WATER

Estimated 2,500 – 3,500 Gallons Per Minute



NAICapital

Commercial Real Estate Services, Worldwide.

No warranty, express or implied, is made as to the accuracy of the information contained herein. This information is submitted subject to errors, omissions, change of price, rental or other conditions, withdrawal without notice, and is subject to any special listing conditions imposed by our principals. Cooperating brokers, buyers, tenants and other parties who receive this document should not rely on it, but should use it as a starting point of analysis, and should independently confirm the accuracy of the information contained herein through a due diligence review of the books, records, files and documents that constitute reliable sources of the information described herein.

For information, please contact your exclusive listing agent

Scott Lisk
Senior Vice President
951.346.0805
NAI Lic. #00806840
SVE Lic. #00901789

800 North Haven
Suite 400
Ontario, CA 91764
tel 945 2339 | www.naicapital.com
slisk@naicapital.com

Rice Airfield Solar Renewable Energy Site



WATER

Estimated 2,500 – 3,500 Gallons Per Minute



AZCA Drilling & Pump, Inc.

P.O. Box 570
928-923-9118 Phone & Fax

Ehrenberg, Arizona 85334
Tucson Phone 520-290-8775

AZ Lic. A, 135159, AZ Drilling Lic. 621, CA Lic. A, C57, HAZ - 753077

8/22/08

RICE DEVELOPMENT, LLC
22 VISTA ENTANTADA
RANCHO MIRAGE, CA., 92270

DEAR MR. & MRS. JABIN:

Enclosed are the test pump results on the KENNEDY WELL AT RICE #2. They show a specific yield of approximately 17gpm per foot of draw down in that 8 inch well which is exceptional in my opinion.

Based upon that information, I feel confident that we should be able to drill a 16 inch well to 1000 feet and produce 2500 to 3500gpm. My design for that well would be drilling a 22 inch diameter hole and installing 700 feet of blank casing and 300 feet of wire wrap screen in the well. The casing size would be 16 inch to accommodate the appropriate pump for the desired gallonage. The wire wrap screen in 16 inch would have over 50 times as much open area as your existing 8 inch slotted casing has. From my experience, I would expect to see specific yields from 25 to 50 gpm per foot of draw down OR HIGHER based upon the test pump results of KWAR#2.

SINCERELY YOURS,

LARRY J. SIDDALL

www.youtube.com/watch?v=jp70Kv-lxBA

NAICapital

Commercial Real Estate Services, Worldwide.

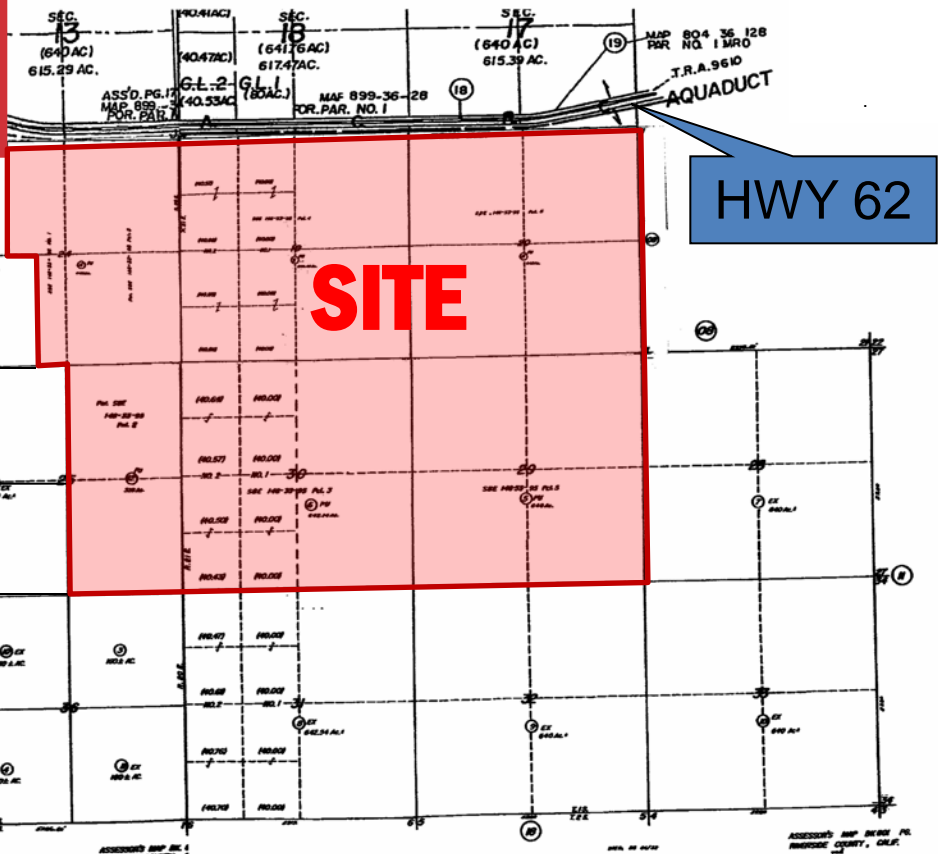
No warranty, express or implied, is made as to the accuracy of the information contained herein. This information is submitted subject to errors, omissions, change of price, rental or other conditions, withdrawal without notice, and is subject to any special listing conditions imposed by our principals. Cooperating brokers, buyers, tenants and other parties who receive this document should not rely on it, but should use it as a starting point of analysis, and should independently confirm the accuracy of the information contained herein through a due diligence review of the books, records, files and documents that constitute reliable sources of the information described herein.

For information, please contact your exclusive listing agent

Scott Lisk
Senior Vice President
951.346.0805
NAI Lic. #00806840
SVE Lic. #00901789

800 North Haven
Suite 400
Ontario, CA 91764
tel 945 2339 | www.naicapital.com
slisk@naicapital.com

Rice Airfield Solar Renewable Energy Site



South Side of Hwy 62, East of Midland Rd, "Rice"
Riverside County, CA – Riverside Thomas Guide Pg 391 L1 & L2

- Features:**
- Hwy 62 Frontage (± 2 ¾ Miles)
 - Former "Rice Airfield"
 - Zoned W-2 (Controlled Development)
- Public Utilities Uses:**
- Facilities for Development and Transmission of Electrical Power and Gas, Hydroelectric Power Plants, Booster or Conversion Plants, Surface Mining.
- Other Uses Include:**
- Single Family Dwellings, Mobile Home Parks, Guest Ranches, Educational Institutions, Water Works Facilities, Nurseries, Greenhouses, Orchards, Packaging Plant, Churches, Airports, Mining Operations, Dune Buggy Parks, Recreational Vehicle Parks, Trailer and Boat Storage.



NAICapital
Commercial Real Estate Services, Worldwide.

No warranty, express or implied, is made as to the accuracy of the information contained herein. This information is submitted subject to errors, omissions, change of price, rental or other conditions, withdrawal without notice, and is subject to any special listing conditions imposed by our principals. Cooperating brokers, buyers, tenants and other parties who receive this document should not rely on it, but should use it as a starting point of analysis, and should independently confirm the accuracy of the information contained herein through a due diligence review of the books, records, files and documents that constitute reliable sources of the information described herein.

For information, please contact your exclusive listing agent

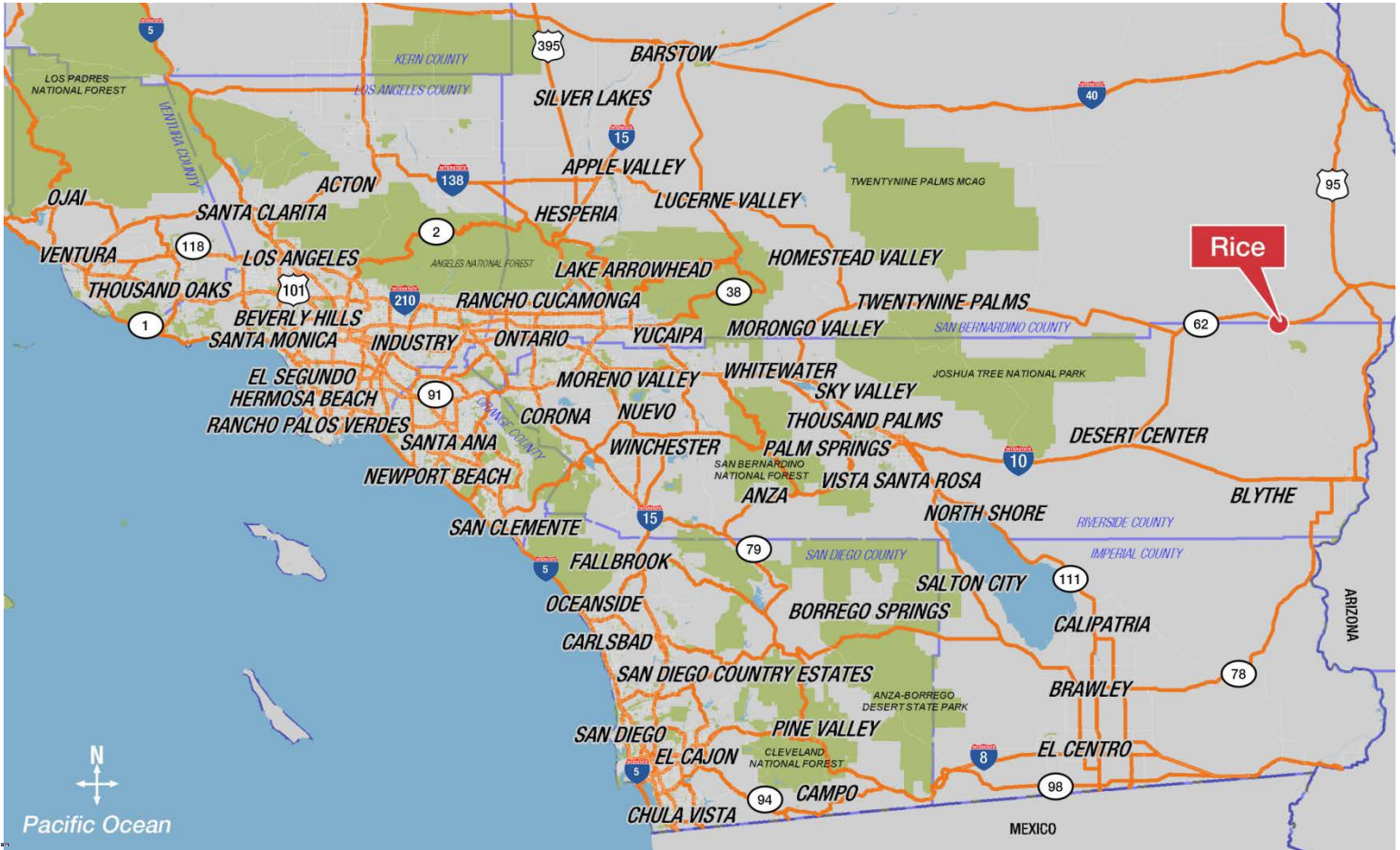
Scott Lisk
Senior Vice President
951.346.0805
NAI Lic. #00806840
SVE Lic. #00901789

800 North Haven
Suite 400
Ontario, CA 91764
tel 945 2339 | www.naicapital.com
slisk@naicapital.com

Rice, CA

3,324 acres

SOUTHERN CALIFORNIA FREEWAYS



Commercial Real Estate Services, Worldwide.

No warranty, express or implied, is made as to the accuracy of the information contained herein. This information is submitted subject to errors, omissions, change of price, rental or other conditions, withdrawal without notice, and is subject to any special listing conditions imposed by our principals. Cooperating brokers, buyers, tenants and other parties who receive this document should not rely on it, but should use it as a starting point of analysis, and should independently confirm the accuracy of the information contained herein through a due diligence review of the books, records, files and documents that constitute reliable sources of the information described herein.

For information, please contact your exclusive listing agent

Scott Lisk
Senior Vice President
951.346.0805
NAI Lic. #00806840
SVE Lic. #00901789

800 North Haven
Suite 400
Ontario, CA 91764
tel 945 2339 | www.naicapital.com
slisk@naicapital.com

3,324 acres

Solar/Geo-Thermal Potential

Renewables Potential Map



Rivers	Rivers/State Borders	State Capitals	Clean City Programs	State Capitals with Clean City Programs
Average Annual Precipitation (in inches)		Fuelwood Harvested (3+ million cubic ft/yr)	Solar Radiation (kWh/m ² /day)	
0 - 09	30 - 39		0 - 4	Geothermal Potential (80+ milli-Watts/m ²)
10 - 19	40 - 49		4 - 6	
20 - 29	50 - 59	6 - 9+	Wind Resources Power Class 4 or greater	



Commercial Real Estate Services, Worldwide.

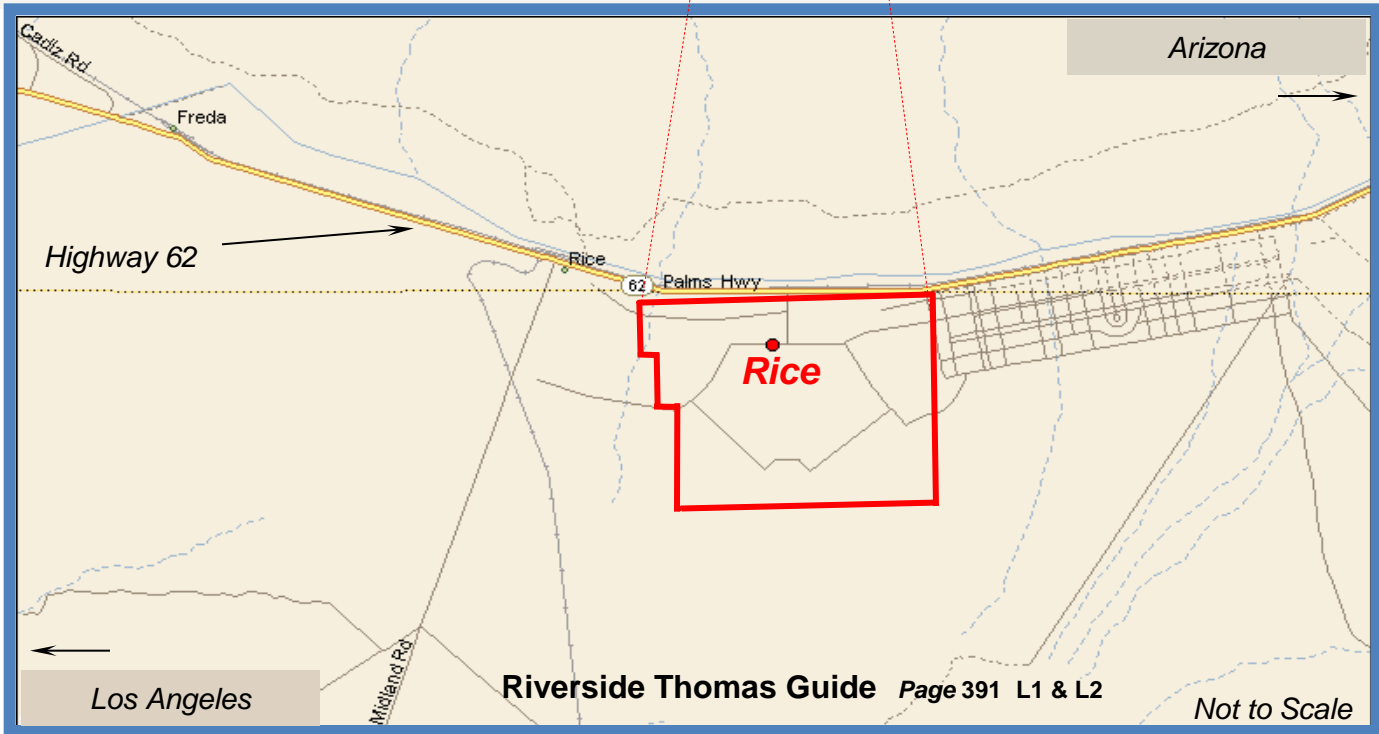
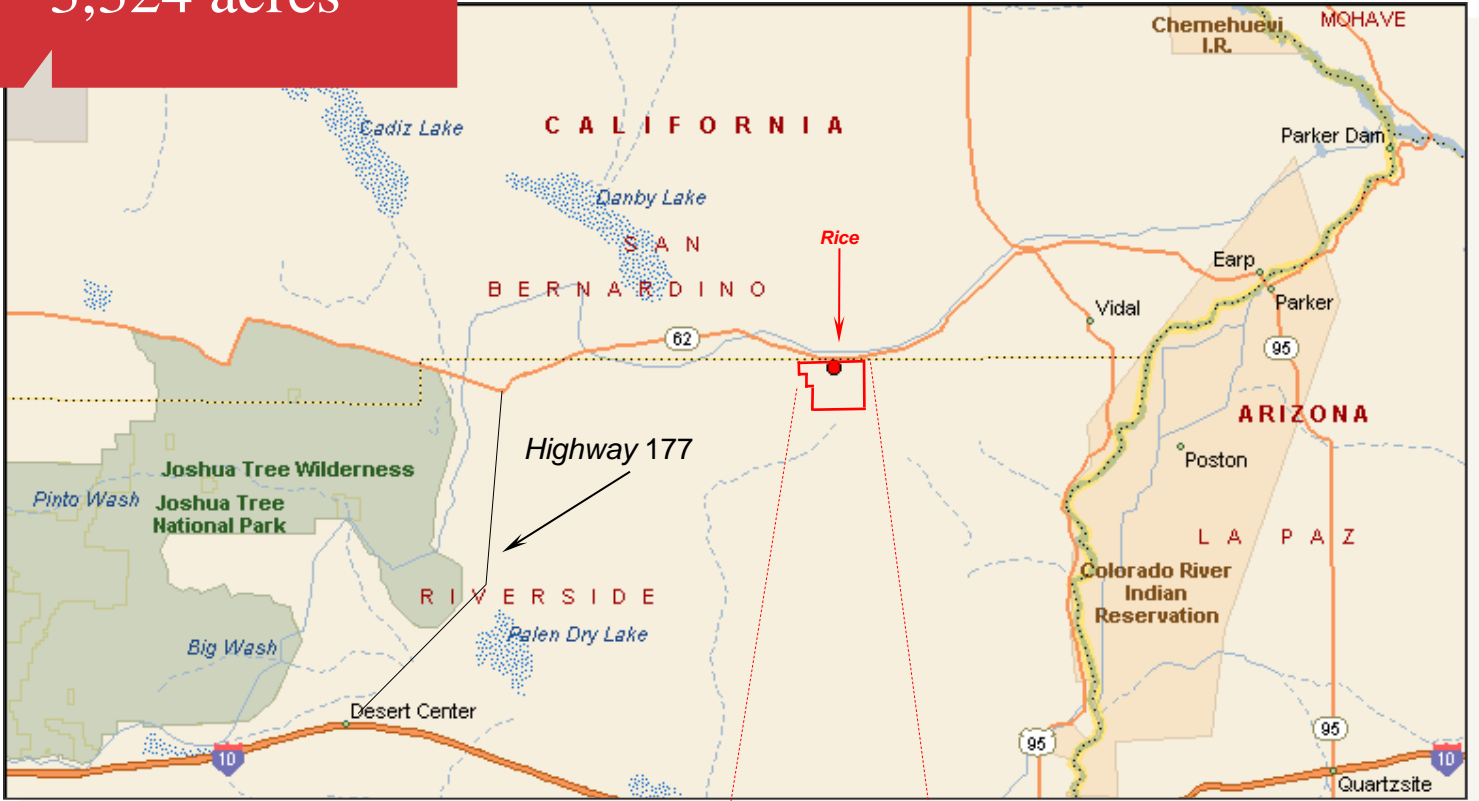
No warranty, express or implied, is made as to the accuracy of the information contained herein. This information is submitted subject to errors, omissions, change of price, rental or other conditions, withdrawal without notice, and is subject to any special listing conditions imposed by our principals. Cooperating brokers, buyers, tenants and other parties who receive this document should not rely on it, but should use it as a starting point of analysis, and should independently confirm the accuracy of the information contained herein through a due diligence review of the books, records, files and documents that constitute reliable sources of the information described herein.

For information, please contact your exclusive listing agent

Scott Lisk
Senior Vice President
951.346.0805
NAI Lic. #00806840
SVE Lic. #00901789

800 North Haven
Suite 400
Ontario, CA 91764
tel 945 2339 | www.naicapital.com
slisk@naicapital.com

Rice, CA
3,324 acres



NAICapital
Commercial Real Estate Services, Worldwide.

No warranty, express or implied, is made as to the accuracy of the information contained herein. This information is submitted subject to errors, omissions, change of price, rental or other conditions, withdrawal without notice, and is subject to any special listing conditions imposed by our principals. Cooperating brokers, buyers, tenants and other parties who receive this document should not rely on it, but should use it as a starting point of analysis, and should independently confirm the accuracy of the information contained herein through a due diligence review of the books, records, files and documents that constitute reliable sources of the information described herein.

For information, please contact your exclusive listing agent

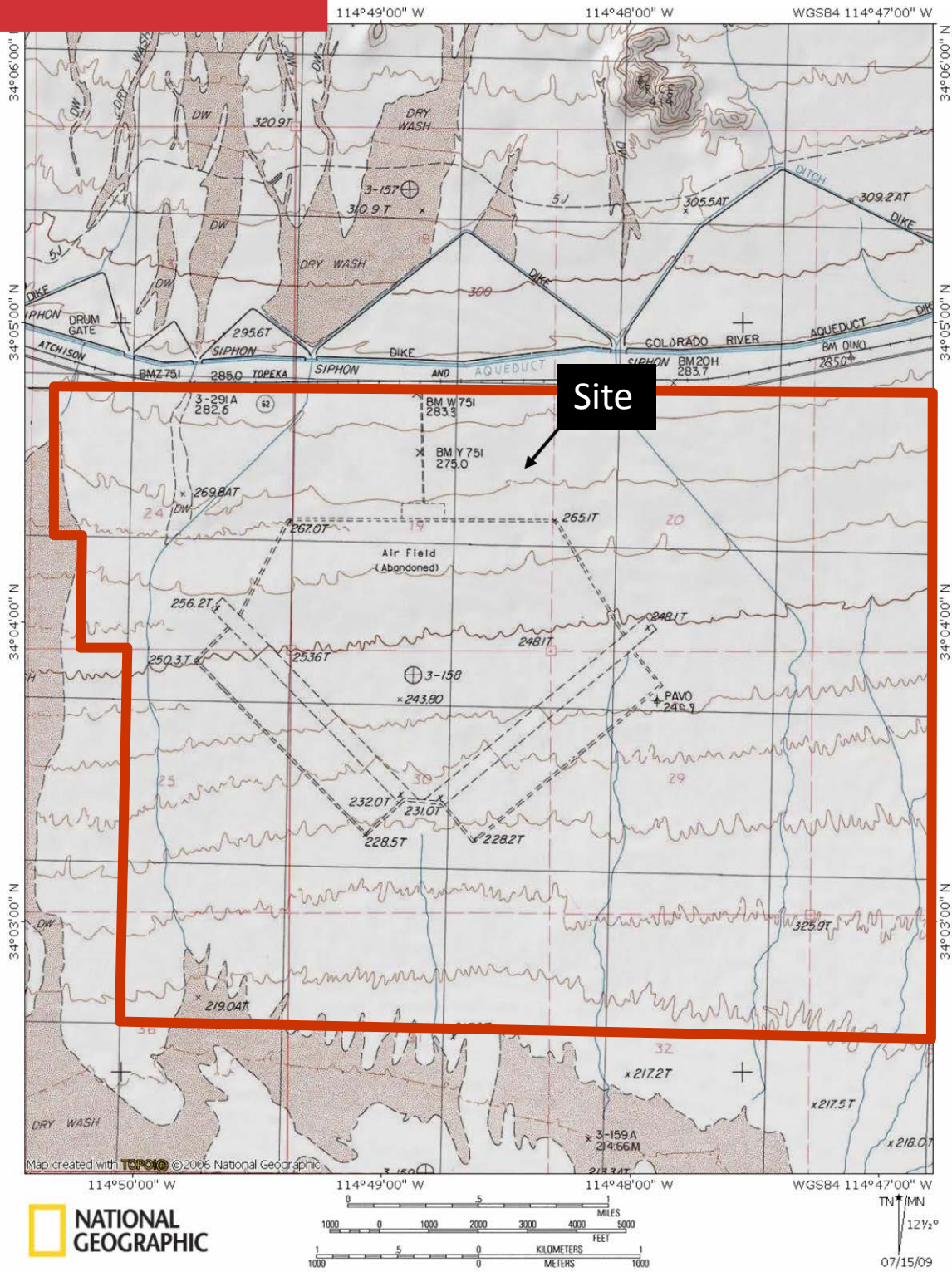
Scott Lisk
Senior Vice President
951.346.0805
NAI Lic. #00806840
SVE Lic. #00901789

800 North Haven
Suite 400
Ontario, CA 91764
tel 945 2339 | www.naicapital.com
slisk@naicapital.com

3,324 acres

Solar/Geo-Thermal Potential

TOPOGRAPHICAL OVERLAY



No warranty, express or implied, is made as to the accuracy of the information contained herein. This information is submitted subject to errors, omissions, change of price, rental or other conditions, withdrawal without notice, and is subject to any special listing conditions imposed by our principals. Cooperating brokers, buyers, tenants and other parties who receive this document should not rely on it, but should use it as a starting point of analysis, and should independently confirm the accuracy of the information contained herein through a due diligence review of the books, records, files and documents that constitute reliable sources of the information described herein.

For information, please contact your exclusive listing agent

Scott Lisk
 Senior Vice President
 951.346.0805
 NAI Lic. #00806840
 SVE Lic. #00901789

800 North Haven
 Suite 400
 Ontario, CA 91764
 tel 945 2339 | www.naicapital.com
 slisk@naicapital.com