

Office Space Available

Prestigious Newport Beach Location

**1109 Quail Street
Newport Beach, CA**

**3,158± Sq. Ft.
For Lease**

FEATURES:

- Minutes from John Wayne Airport
- Close Proximity to 73, 55 & 405 Freeways
- Private Restrooms within Suite
- 24 Hour HVAC Access

No warranty, express or implied, is made as to the accuracy of the information contained herein. This information is submitted subject to errors, omissions, change of price, rental or other conditions, withdrawal without notice, and is subject to any special listing conditions imposed by our principals. Cooperating brokers, buyers, tenants and other parties who receive this document should not rely on it, but should use it as a starting point of analysis, and should independently confirm the accuracy of the information contained herein through a due diligence review of the books, records, files and documents that constitute reliable sources of the information described herein.



Commercial Real Estate Services, Worldwide.

Steve Ehrich
Senior Vice President
tel 949 468 2328
sehrich@naicapital.com
DRE License #01092019

NAI Capital | Orange County
4650 Von Karman Avenue
Newport Beach, CA 92660
Main 949 854 6600 x2328
www.naicapital.com

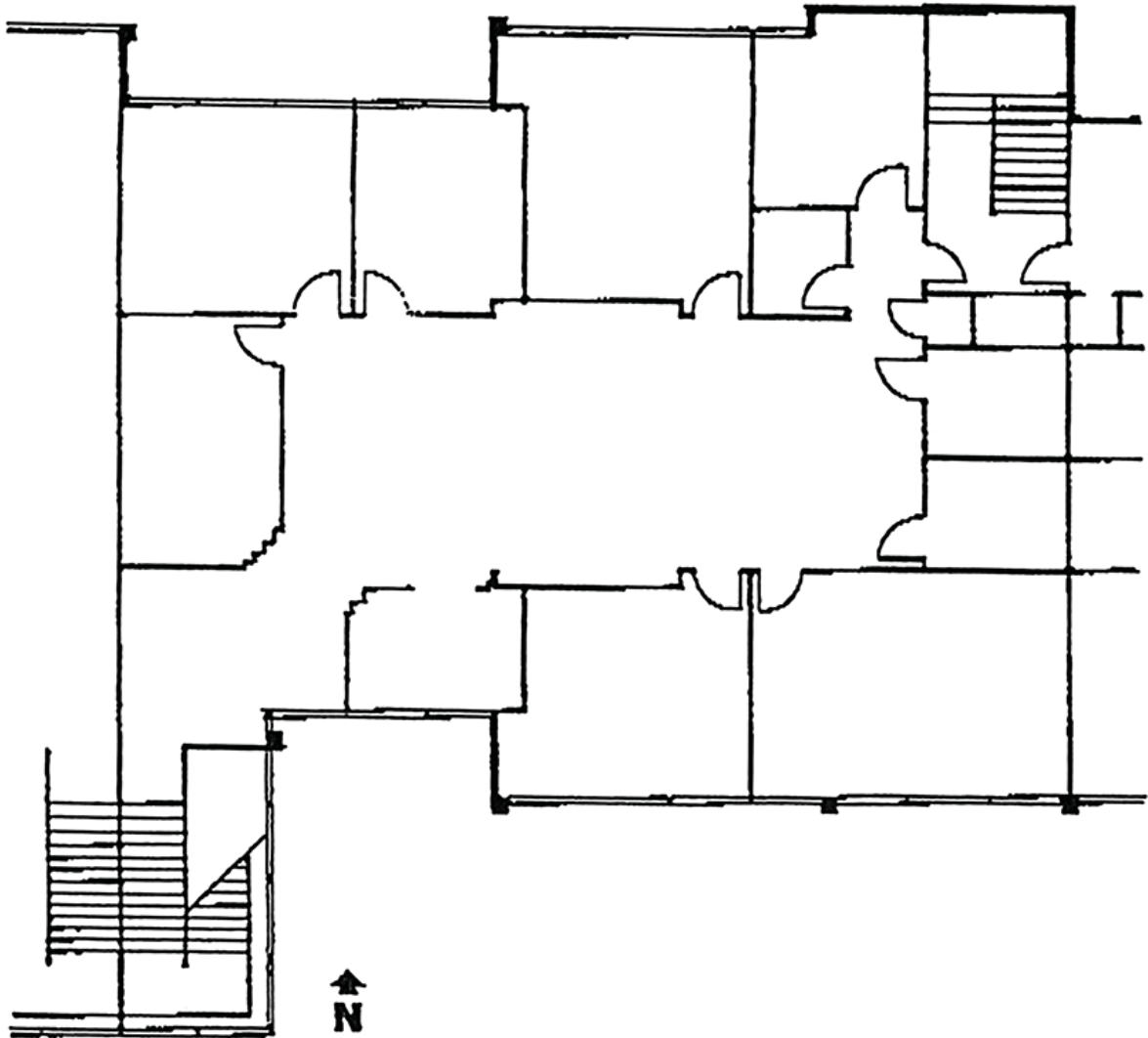
Office Space Available

Prestigious Newport Beach Location

1109 Quail Street
Newport Beach, CA

Floor Plan

No warranty, express or implied, is made as to the accuracy of the information contained herein. This information is submitted subject to errors, omissions, change of price, rental or other conditions, withdrawal without notice, and is subject to any special listing conditions imposed by our principals. Cooperating brokers, buyers, tenants and other parties who receive this document should not rely on it, but should use it as a starting point of analysis, and should independently confirm the accuracy of the information contained herein through a due diligence review of the books, records, files and documents that constitute reliable sources of the information described herein.



Office Space Available

Prestigious Newport Beach Location



Commercial Real Estate Services, Worldwide.

No warranty, express or implied, is made as to the accuracy of the information contained herein. This information is submitted subject to errors, omissions, change of price, rental or other conditions, withdrawal without notice, and is subject to any special listing conditions imposed by our principals. Cooperating brokers, buyers, tenants and other parties who receive this document should not rely on it, but should use it as a starting point of analysis, and should independently confirm the accuracy of the information contained herein through a due diligence review of the books, records, files and documents that constitute reliable sources of the information described herein.

Steve Ehrich
Senior Vice President
tel 949 468 2328
sehrich@naicapital.com
DRE License #01092019

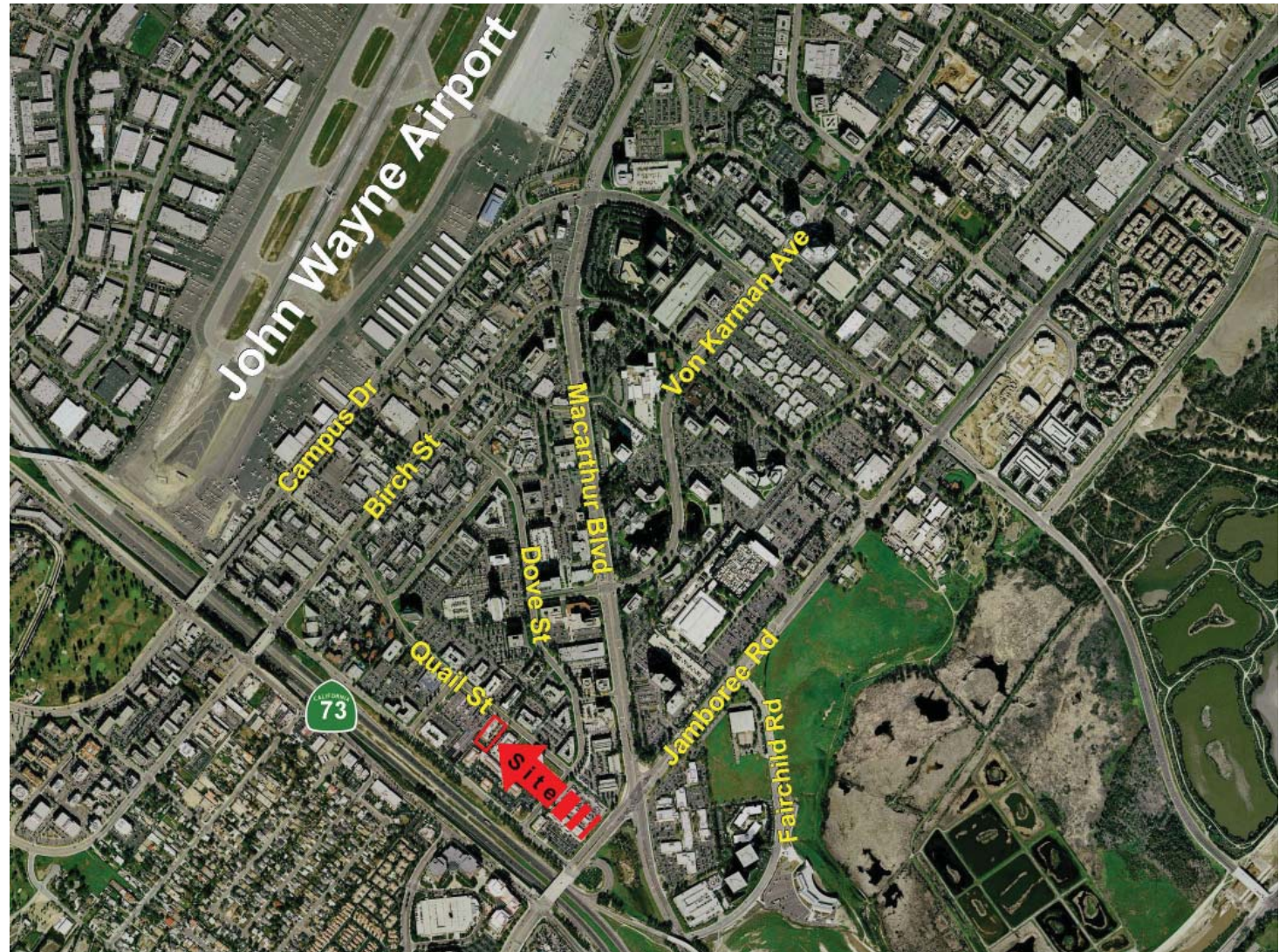
NAI Capital | Orange County
4650 Von Karman Avenue
Newport Beach, CA 92660
Main 949 854 6600 x2328
www.naicapital.com

Office Space Available

Prestigious Newport Beach Location

1109 Quail Street
Newport Beach, CA

Aerial View



No warranty, express or implied, is made as to the accuracy of the information contained herein. This information is submitted subject to errors, omissions, change of price, rental or other conditions, withdrawal without notice, and is subject to any special listing conditions imposed by our principals. Cooperating brokers, buyers, tenants and other parties who receive this document should not rely on it, but should use it as a starting point of analysis, and should independently confirm the accuracy of the information contained herein through a due diligence review of the books, records, files and documents that constitute reliable sources of the information described herein.



Commercial Real Estate Services, Worldwide.

Steve Ehrich
Senior Vice President
tel 949 468 2328
sehrich@naicapital.com
DRE License #01092019

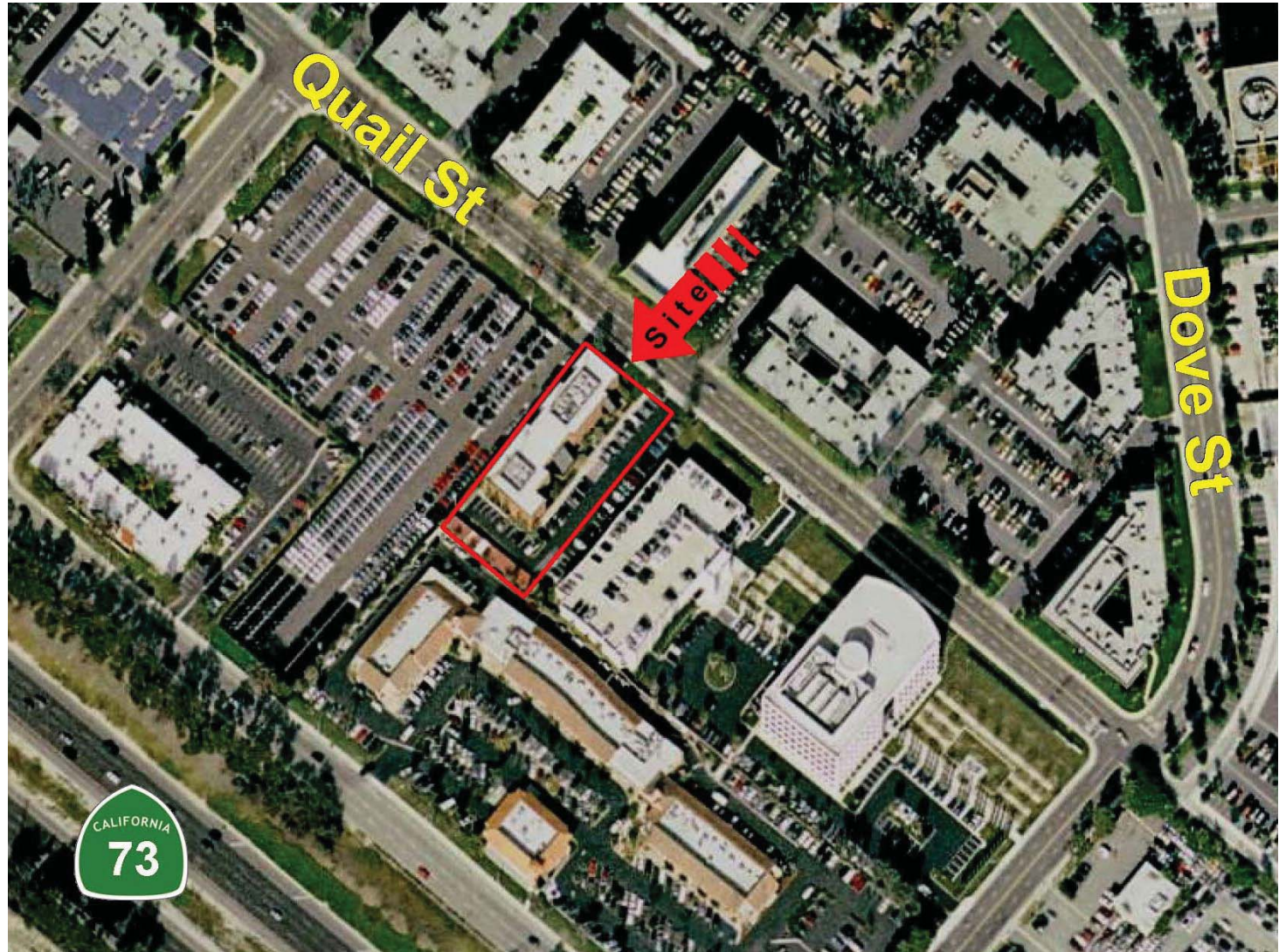
NAI Capital | Orange County
4650 Von Karman Avenue
Newport Beach, CA 92660
Main 949 854 6600 x2328
www.naicapital.com

Office Space Available

Prestigious Newport Beach Location

1109 Quail Street
Newport Beach, CA

Aerial View



No warranty, express or implied, is made as to the accuracy of the information contained herein. This information is submitted subject to errors, omissions, change of price, rental or other conditions, withdrawal without notice, and is subject to any special listing conditions imposed by our principals. Cooperating brokers, buyers, tenants and other parties who receive this document should not rely on it, but should use it as a starting point of analysis, and should independently confirm the accuracy of the information contained herein through a due diligence review of the books, records, files and documents that constitute reliable sources of the information described herein.



Commercial Real Estate Services, Worldwide.

Steve Ehrich
Senior Vice President
tel 949 468 2328
sehrich@naicapital.com
DRE License #01092019

NAI Capital | Orange County
4650 Von Karman Avenue
Newport Beach, CA 92660
Main 949 854 6600 x2328
www.naicapital.com

Office Space Available

Prestigious Newport Beach Location

**1109 Quail Street
Newport Beach, CA**

About Newport Beach

The mostly Affluent City of Newport Beach was incorporated in 1906 and is located on the Pacific coastline in Orange County, California. Orange County is on the Southern California coast between Los Angeles and San Diego Counties and encompasses close to 24 square miles. According to the United States Census Bureau (USCB), as of late 2010, the population estimate in 2011 was 86,484, the median home value (2006-2010) was \$1,000,001 and the median household income was over \$107,000.

In addition to being a high end residential area with picturesque coastline and beaches, Newport Beach also is home to a thriving business community, high end golf courses, first class Newport Bay, Yacht Clubs and multiple shopping centers including the renowned Fashion Island. Also according to the USCB in 2007 there were over 18,000 firms in Newport Beach. Among the larger top companies are Hoag Memorial Hospital, Pacific Life, Pimco, Conexant, Jazz Semiconductor and Glidewell Dental.



No warranty, express or implied, is made as to the accuracy of the information contained herein. This information is submitted subject to errors, omissions, change of price, rental or other conditions, withdrawal without notice, and is subject to any special listing conditions imposed by our principals. Cooperating brokers, buyers, tenants and other parties who receive this document should not rely on it, but should use it as a starting point of analysis, and should independently confirm the accuracy of the information contained herein through a due diligence review of the books, records, files and documents that constitute reliable sources of the information described herein.



Commercial Real Estate Services, Worldwide.

Steve Ehrich
Senior Vice President
tel 949 468 2328
sehrich@naicapital.com
DRE License #01092019

NAI Capital | Orange County
4650 Von Karman Avenue
Newport Beach, CA 92660
Main 949 854 6600 x2328
www.naicapital.com