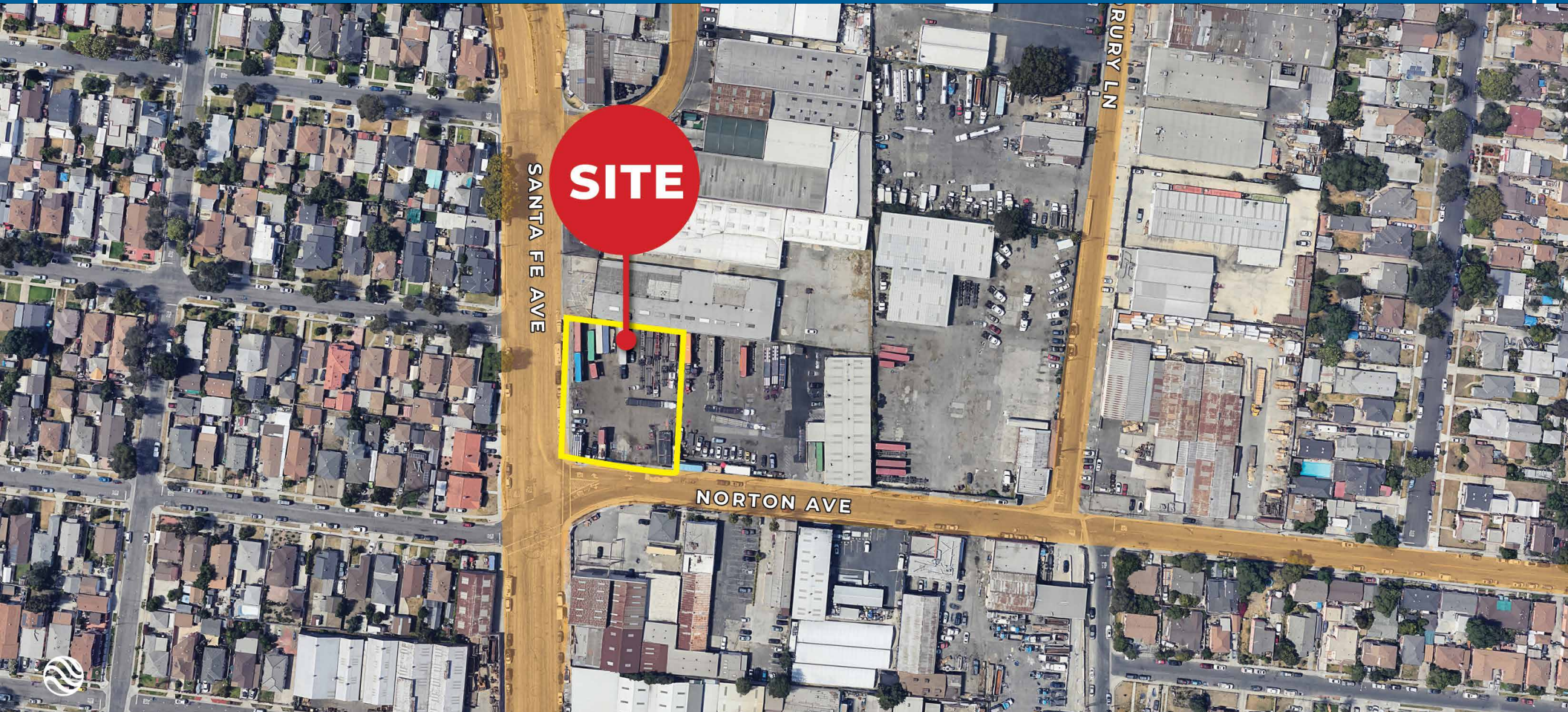


INDUSTRIALLY ZONED LAND FOR SALE

CORNER OF SANTA FE AVE & NORTON AVE
BUSINESS FRIENDLY CITY OF LYNWOOD
APN: 6170-015-031



EXCLUSIVELY LISTED BY:

Rose O'Sullivan

Senior Vice President

d: 818-742-1615 | m: 805-338-9232

rosullivan@naicapital.com

Cal DRE Lic #01904175

Jared Swedelson

Vice President

d: 818-742-1632 | m: 818-644-7597

jswedelson@naicapital.com

Cal DRE Lic #02105146

NAI Capital - Encino

15821 Centura Blvd., Suite 320E

Los Angeles, CA 91436

d: 818-905-2400 | f: 818-905-2425

www.naicapital.com

NAI Capital
COMMERCIAL REAL ESTATE SERVICES, WORLDWIDE

PROPERTY DETAIL

FOR SALE

26,093 SF | 0.60 AC PARCEL

Price: \$3,650,000

Price per Land SF: \$139

APN: 6170-015-031

Zoning: LYM

The Property is located in the M (Manufacturing) Zone in the City of Lynwood. The General Plan Land Use designation is Industrial.

Links:

Lynwood Planning Division

<https://www.lynwoodca.gov/175/Planning-Division>

Lynwood Zoning Map

<https://lynwood.maps.arcgis.com/apps/webappviewer/index.html?id=46098387dce4403fb9645bccb7c173b8>

Lynwood Municipal Code

<https://www.codepublishing.com/CA/Lynwood/#!/Lynwood25/Lynwood2530.html#25-30>

General Plan

<https://www.lynwoodca.gov/DocumentCenter/View/157/City-of-Lynwood-General-Plan-PDF>

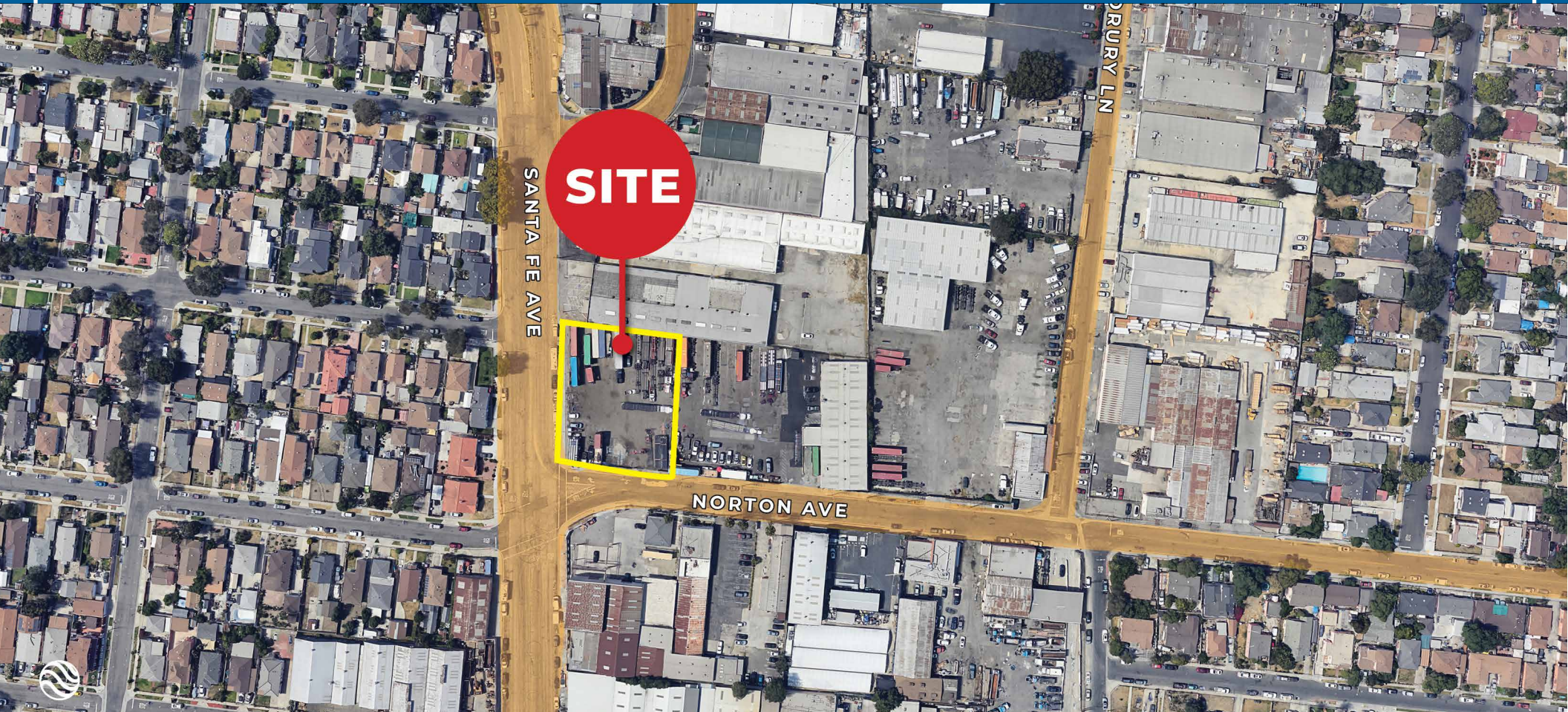


AERIAL MAP



INDUSTRIALLY ZONED LAND FOR SALE

CORNER OF SANTA FE AVE & NORTON AVE
BUSINESS FRIENDLY CITY OF LYNWOOD
APN: 6170-015-031



EXCLUSIVELY LISTED BY:

Rose O'Sullivan

Senior Vice President

d: 818-742-1615 | m: 805-338-9232

rosullivan@naicapital.com

Cal DRE Lic #01904175

Jared Swedelson

Vice President

d: 818-742-1632 | m: 818-644-7597

jswedelson@naicapital.com

Cal DRE Lic #02105146

NAI Capital - Encino

15821 Centura Blvd., Suite 320E

Los Angeles, CA 91436

d: 818-905-2400 | f: 818-905-2425

www.naicapital.com

NAI Capital
COMMERCIAL REAL ESTATE SERVICES, WORLDWIDE