



# 1625 103rd Street

Los Angeles, California 90002

## Lease Highlights

- Grocery & Pharmacy Anchored Shopping Center
- High Density South LA Neighborhood
- On-site Security 24 Hours Per Day
- Ample Parking
- MTA Blue Line Stop in Front of Shopping Center
- Rare Leasing Opportunity in Trade Area

## Available Spaces

Spaces	Size (SF)	Price PSF
Space 1	2000	\$3.00 (NNN)

Demographics	1 Mile	3 Miles	5 Miles
Total Households	12,300	13,419	268,739
Total Population	51,981	58,048	1,062,615
Average HH Income	\$40,472	\$47,532	\$46,142



For more information

**Patrick Ortiz, Senior Vice President**

O: 818.905.2400

portiz@naicapital.com | CalDRE #01756382

No warranty, express or implied, is made as to the accuracy of the information contained herein. This information is submitted subject to errors, omissions, change of price, rental or other conditions, withdrawal without notice, and is subject to any special listing conditions imposed by our principals. Cooperating brokers, buyers, tenants and other parties who receive this document should not rely on it, but should use it as a starting point of analysis, and should independently confirm the accuracy of the information contained herein through a due diligence review of the books, records, files and documents that constitute reliable sources of the information described herein. Logos are for identification purposes only and may be trademarks of their respective companies. NAI Capital, Inc. CAL DRE Lic. #02130474

# 1625 103rd Street



**Patrick Ortiz**  
Senior Vice President  
818.905.2400  
portiz@naicapital.com  
CalDRE #01756382

# 1625 103rd Street



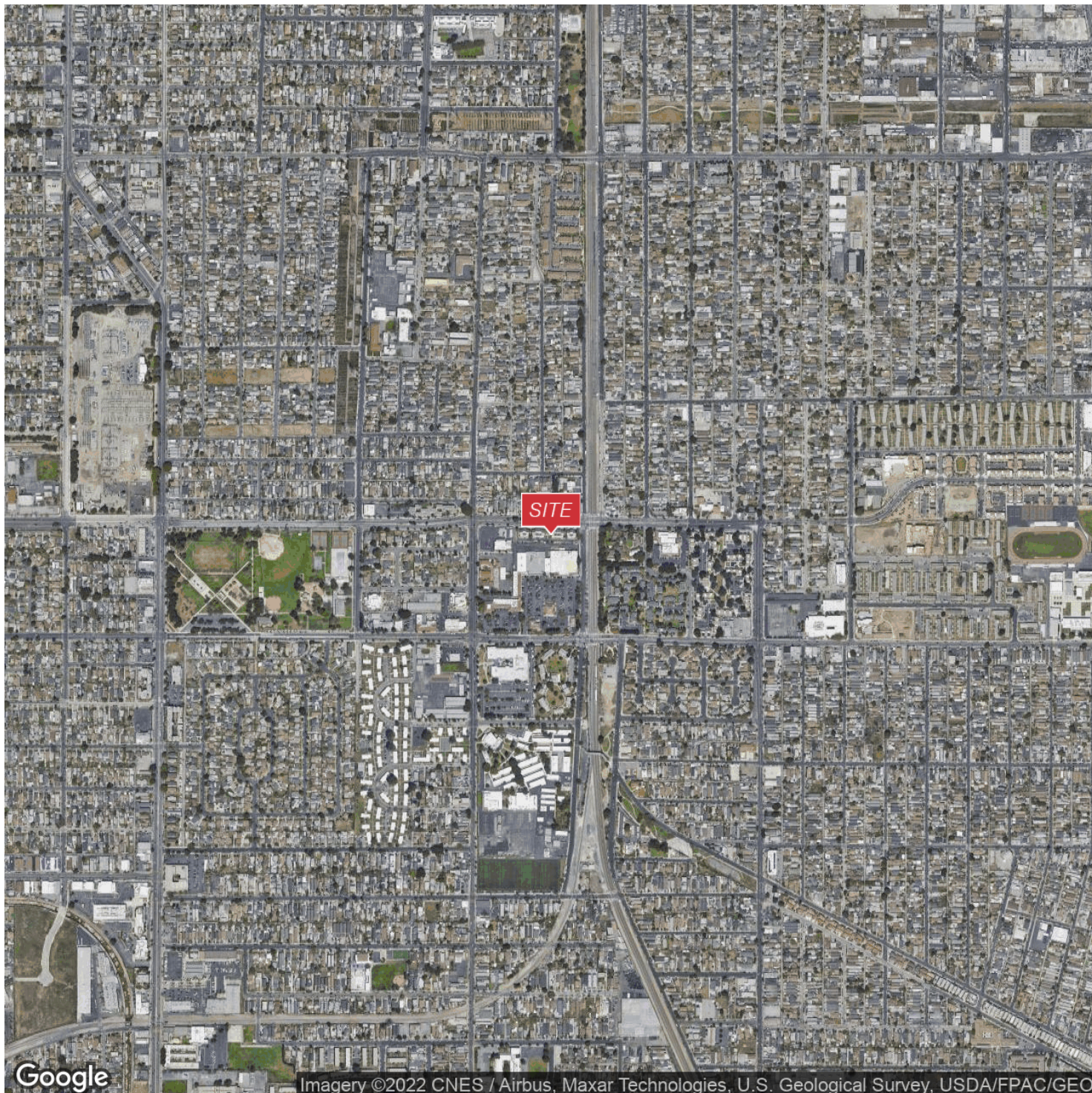
**Patrick Ortiz**  
Senior Vice President  
818.905.2400  
portiz@naicapital.com  
CalDRE #01756382

# 1625 103rd Street



**Patrick Ortiz**  
Senior Vice President  
818.905.2400  
portiz@naicapital.com  
CalDRE #01756382

# 1625 103rd Street



**Patrick Ortiz**  
Senior Vice President  
818.905.2400  
portiz@naicapital.com  
CalDRE #01756382