

8411-8431
CANOGA AVE
Canoga Park, CA 91304

CANOGA VILLAGE
INDUSTRIAL PARK
9,060-30,000 AVAILABLE



WEST VALLEY INDUSTRIAL UNITS FOR LEASE

MATT EHRLICH
Executive Vice President
d. 818 421 1661
mehrlich@naicapital.com
CA DRE #01936772

SEAN IEZZA
Associate
d. 805 233 5228
siezza@naicapital.com
CA DRE #02220089

NAI CAPITAL
15821 Ventura Blvd
Suite #320
Encino, CA 91436
818-905-2400

NAI Capital
COMMERCIAL REAL ESTATE SERVICES, WORLDWIDE

PROPERTY OVERVIEW

Discover prime industrial space for lease in the highly desirable West San Fernando Valley! Units range from 9,060 to 30,000 square feet. Canoga Village Industrial Park boasts professionally managed units, offering everything you need for your business. Units enjoy MR2 zoning, 16-18 foot clearance, 10 x 14 ground loading doors, and a huge land parcel providing easy maneuvering for 53 foot trucks. This industrial park is designed for maximum efficiency. Canoga Village's units are equipped with high power (600A+ 400A/240v 3P 4W), 24-hour access, gated secured yards, and partial or fully HVAC'd units, some having power roll up doors. The industrial park is located within the City of Los Angeles Enterprise Zone. Several units are available for immediate occupancy.



PROPERTY AMENITIES



**9,060 - 30,000
Square Feet**



**High Power
600A/120 - 208V 3P4W**

- 9,060 - 30,000 Square Feet for Lease
- MR2 Zoning
- Professionally Managed Multi Tenant Industrial Park
- Desirable West San Fernando Valley Industrial Units
- 16-18 Foot Clearance
- 10 X 14 Ground Loading Doors
- High Power - 600+400A/120 - 240V 3P 4W
- Situated Within a City of Los Angeles Enterprise Zone
- 24 Hour Access
- Partial & Fully HVAC'd Units
- Gated Secured Yards
- On Site Dog Park
- Close Proximity to Metro Bus Line
- Situated Adjacent to Los Angeles Police Department (Topanga Station). Immediate Availability



8419 CANOGA AVENUE

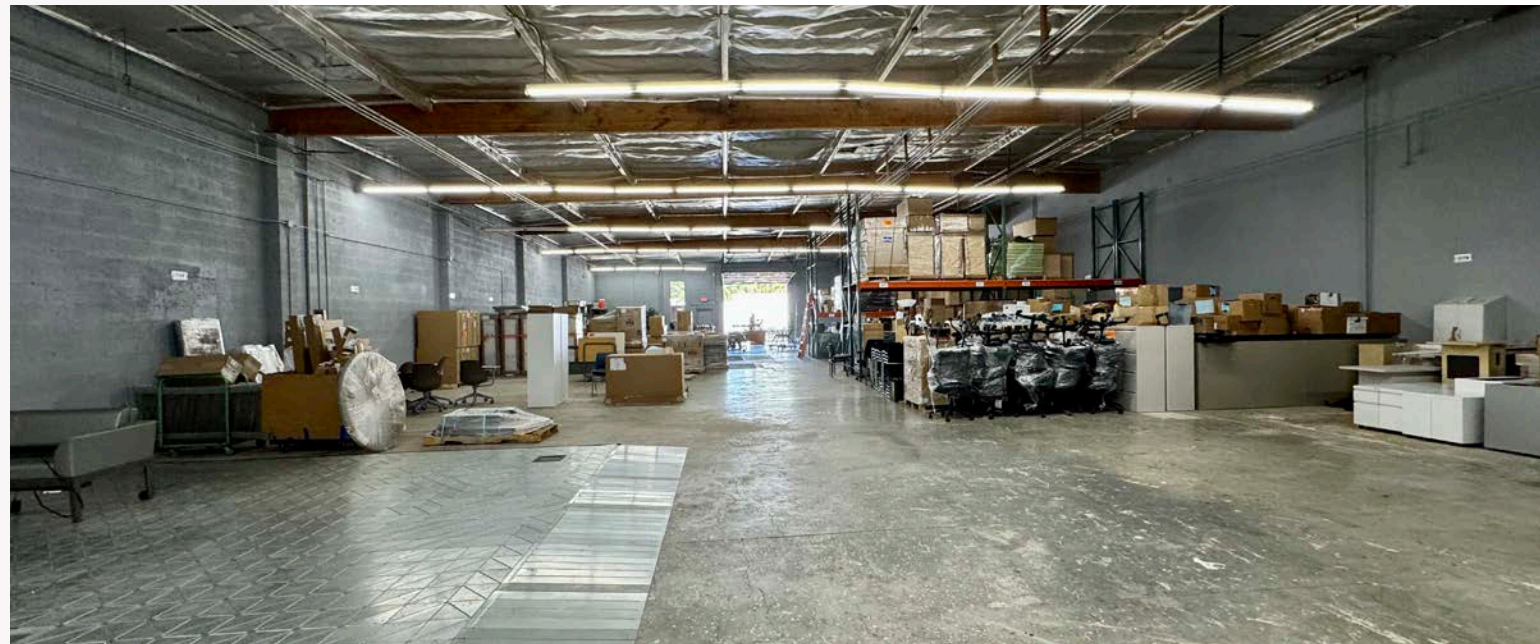


**9,060
Square Feet**

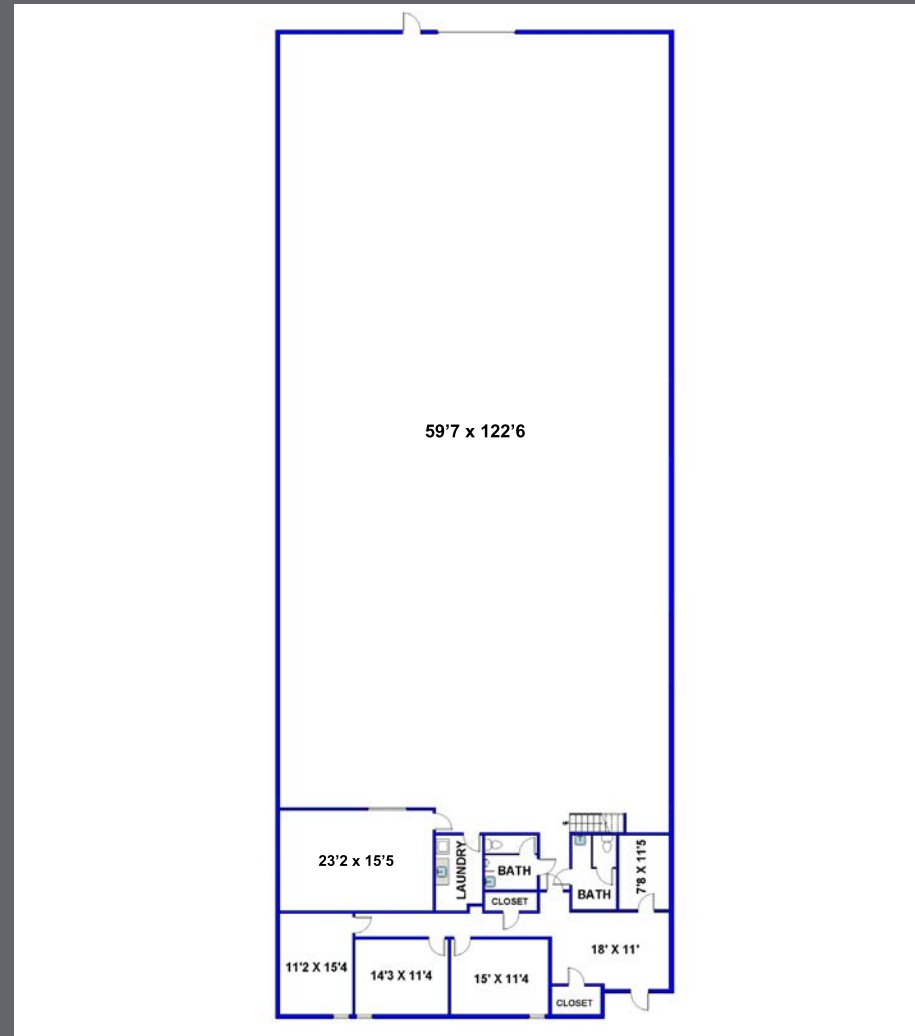


**High Power
400A/120 - 240V 3P4W**

- Newly Renovated Unit
- Office Space: 1,000 feet
- Loading Doors: 2
- 10 X 14 Roll-up Door
- Gated Secured Yard
- Heavy Insulation
- 18 Foot Clearance
- Lunch/Break Room with Sink
- Skylights
- Reception
- Fresh Paint
- (3) Private Offices
- New Carpet
- Conference Room
- \$1.52 PSF Modified Gross
- 2 Restrooms



FLOOR PLAN - 8419



MATT EHRLICH
Executive Vice President
d. 818 421 1661
mehrlich@naicapital.com
CA DRE #01936772

SEAN IEZZA
Associate
d. 805 233 5228
siezza@naicapital.com
CA DRE #02220089

NAI CAPITAL
15821 Ventura Blvd
Suite #320
Encino, CA 91436
818-905-2400

8421 CANOGA AVENUE



**9,060
Square Feet**

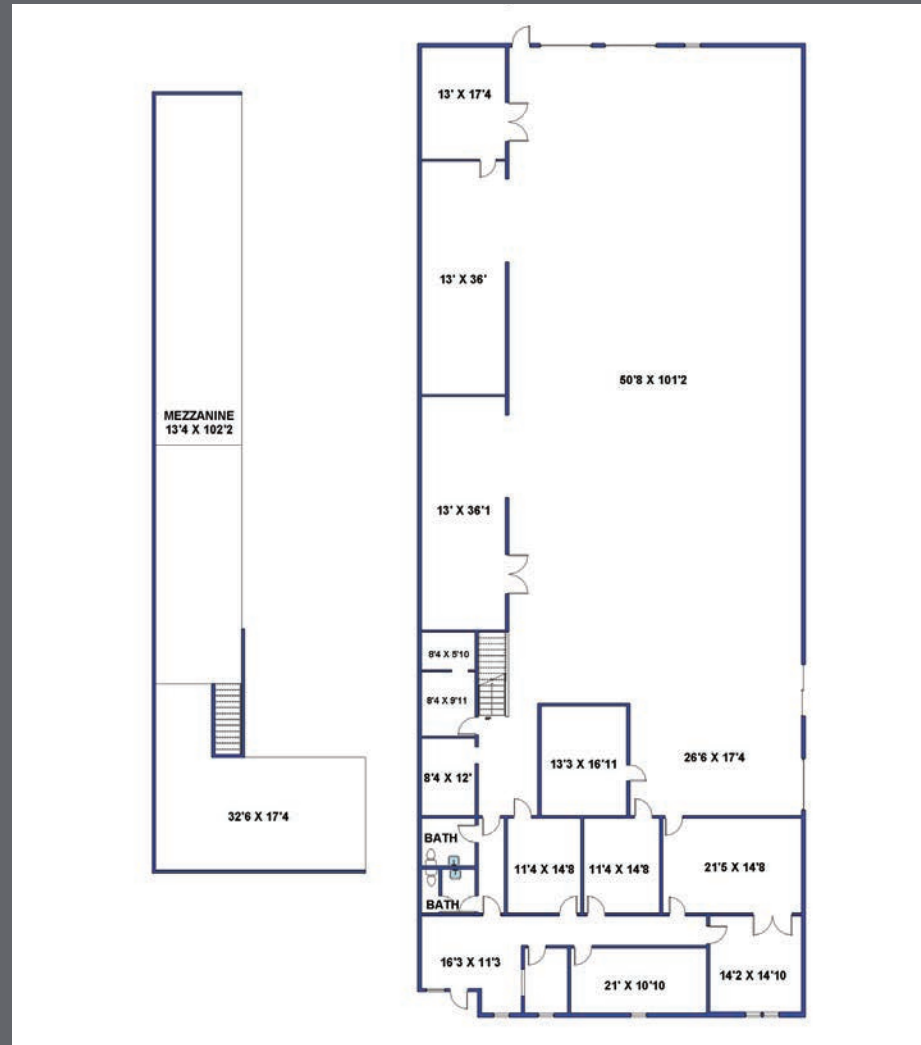


**High Power
400A/120 - 240V 3P4W**

- Recently Renovated Unit
- Office Space: 2,500 feet
- 10x12 Roll-up Doors
- Gated Secured Yard
- Extra HVAC under Mezzanine
- 16-18 Foot Clearance
- Lunch/Break Room with Sink
- Skylights
- Reception
- (7) Private Offices
- Conference Room
- \$1.52 PSF Modified Gross
- Contained Production Area in Warehouse
- 2 Restrooms



FLOOR PLAN - 8421



MATT EHRLICH
Executive Vice President
d. 818 421 1661
mehrlich@naicapital.com
CA DRE #01936772

SEAN IEZZA
Associate
d. 805 233 5228
siezza@naicapital.com
CA DRE #02220089

NAI CAPITAL
15821 Ventura Blvd
Suite #320
Encino, CA 91436
818-905-2400

8427 CANOGA AVENUE

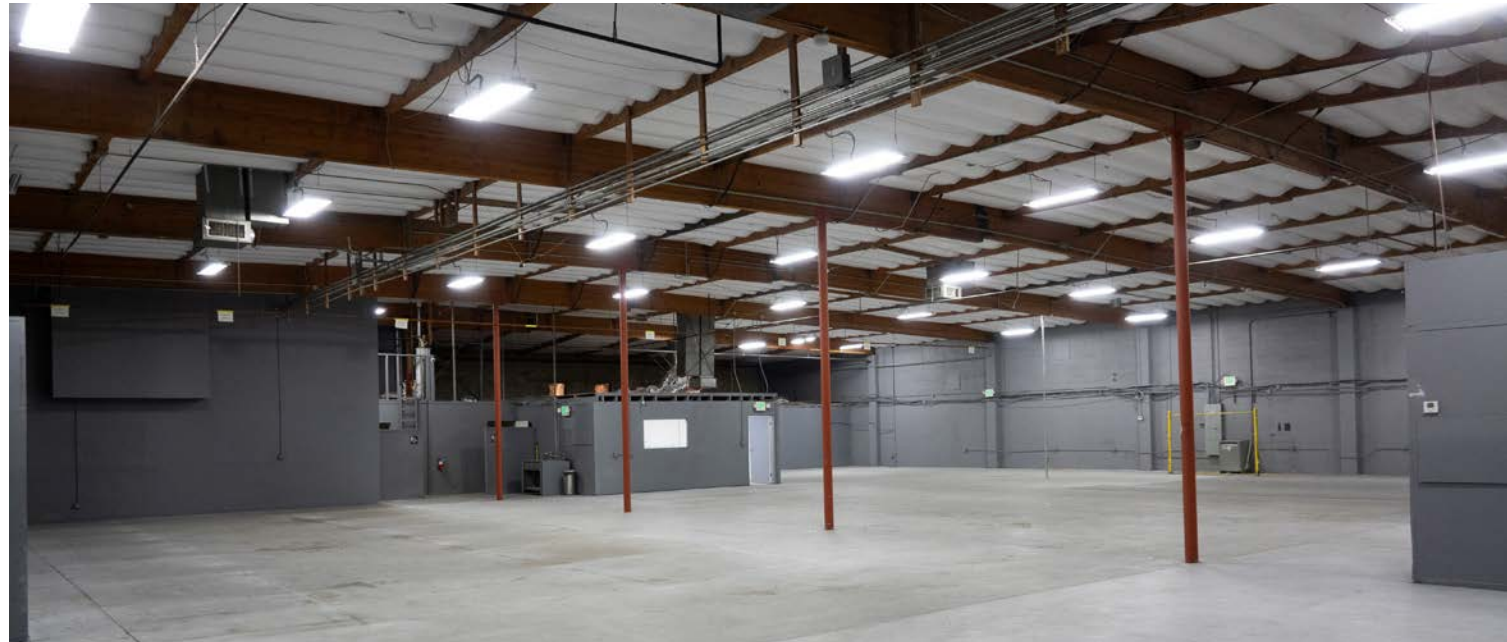


**12,000
Square Feet**

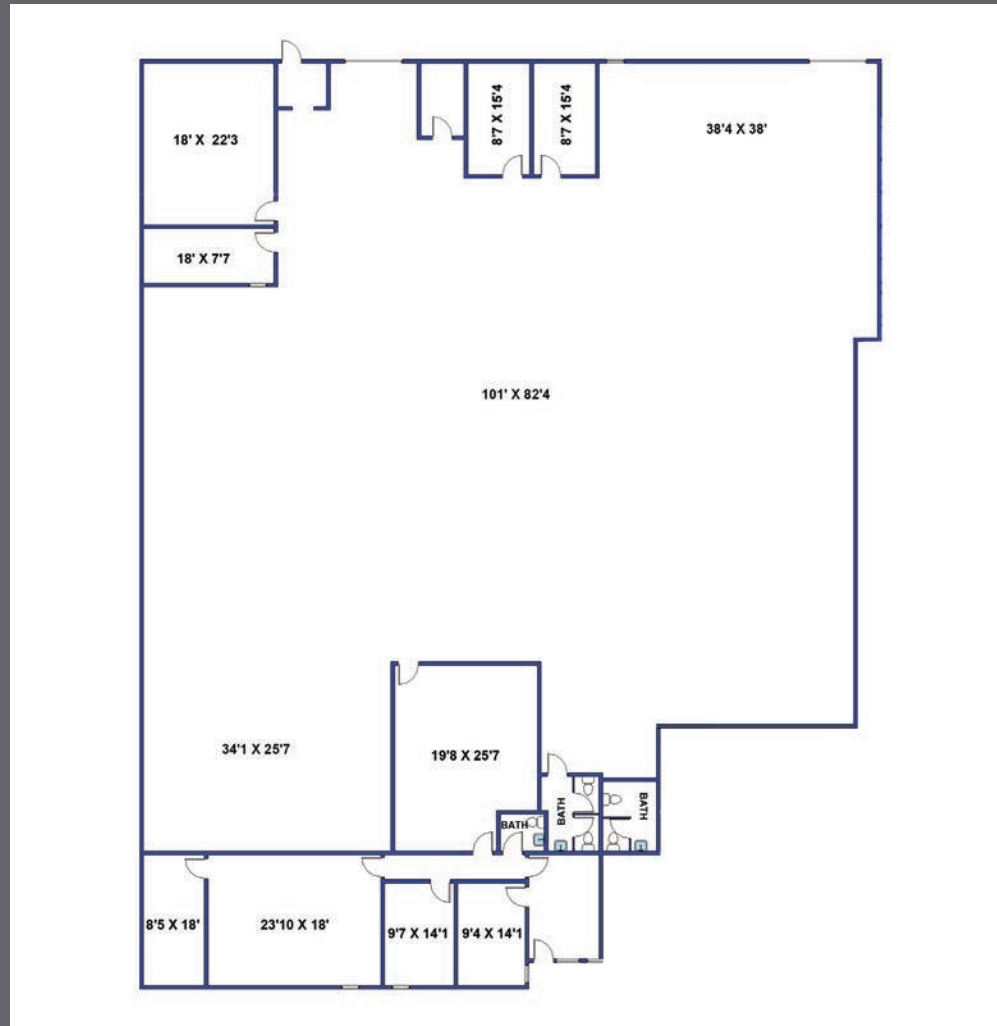


**High Power
600A/120 - 240V 3P4W**

- Newly Renovated Unit
- Full HVAC - 30 Tons
- Office Space: 2,500 feet
- (2) 10 X 14 Powered Roll-up Doors
- Gated Secured Yard
- 16-18 Foot Clearance
- Foreman's Office (4)
- Heavy Insulation
- Large Secured Built in Vault
- Lunch/Break Room with Sink
- Skylights
- Full HVAC
- Reception
- Fresh Paint
- (3) Private Offices
- Built in Vault
- Conference Room
- \$1.40 PSF Modified Gross
- Server Room
- (3) Restrooms



FLOOR PLAN - 8427



MATT EHRLICH
Executive Vice President
d. 818 421 1661
mehrlich@naicapital.com
CA DRE #01936772

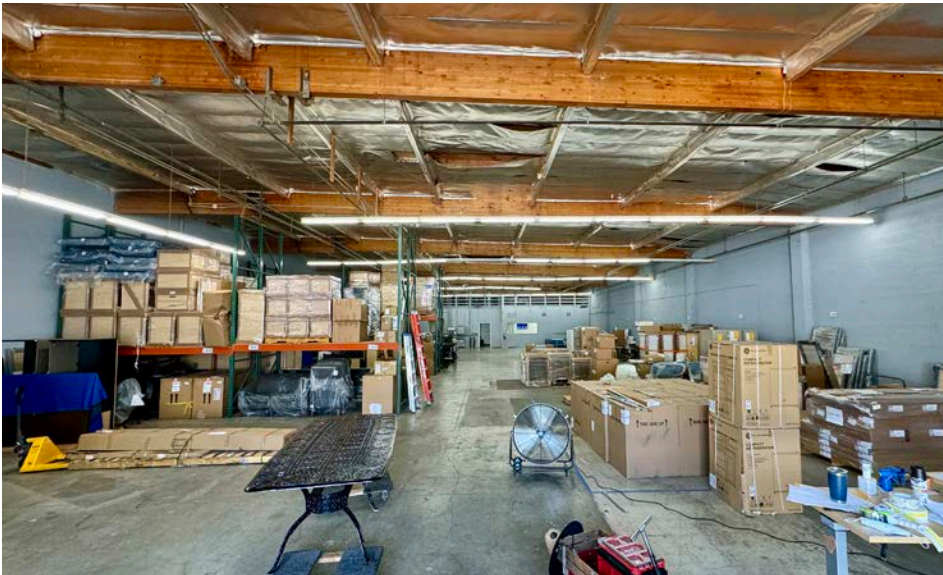
SEAN IEZZA
Associate
d. 805 233 5228
siezza@naicapital.com
CA DRE #02220089

NAI CAPITAL
15821 Ventura Blvd
Suite #320
Encino, CA 91436
818-905-2400

PROPERTY PHOTOS



PROPERTY PHOTOS



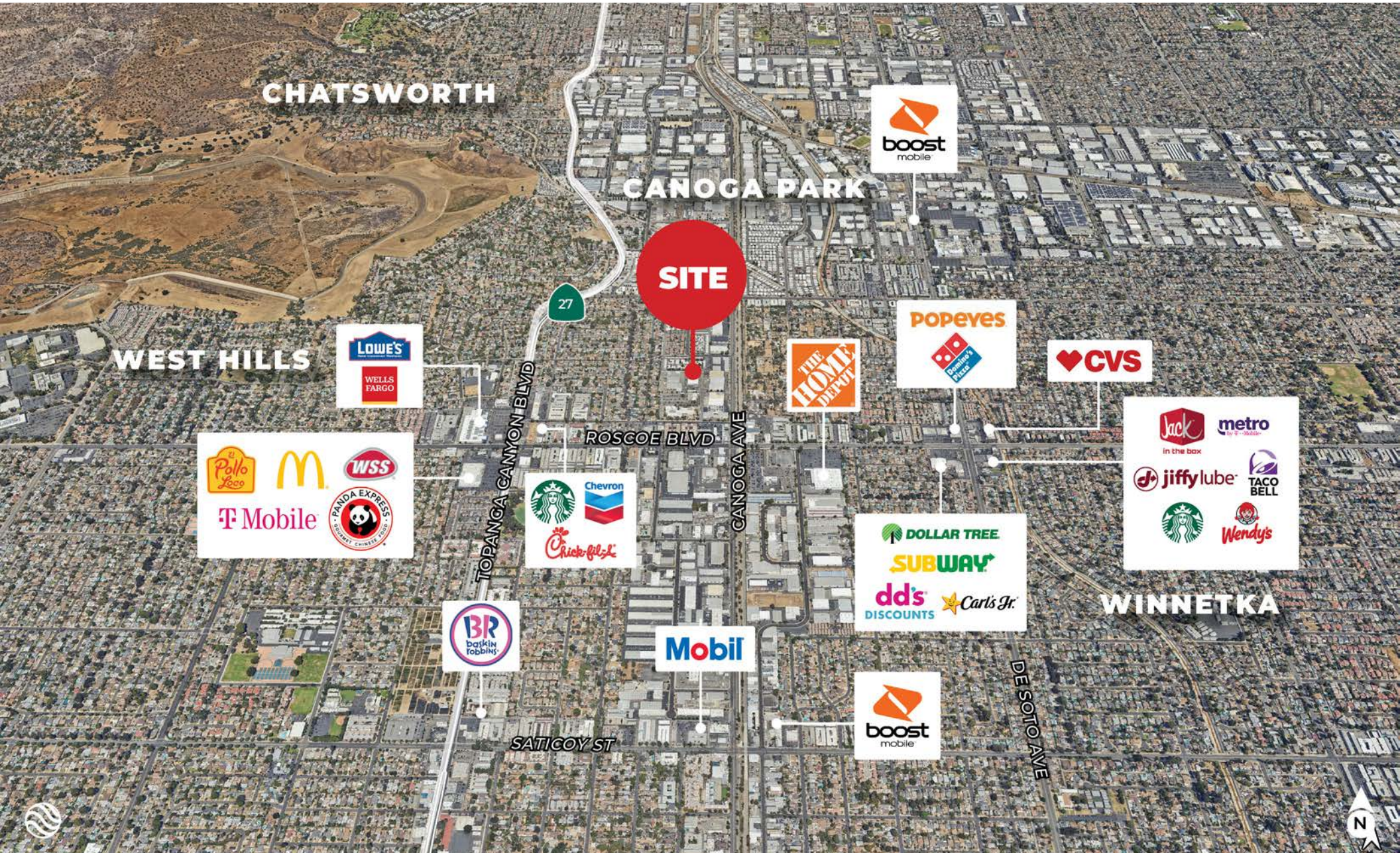
PROPERTY PHOTOS



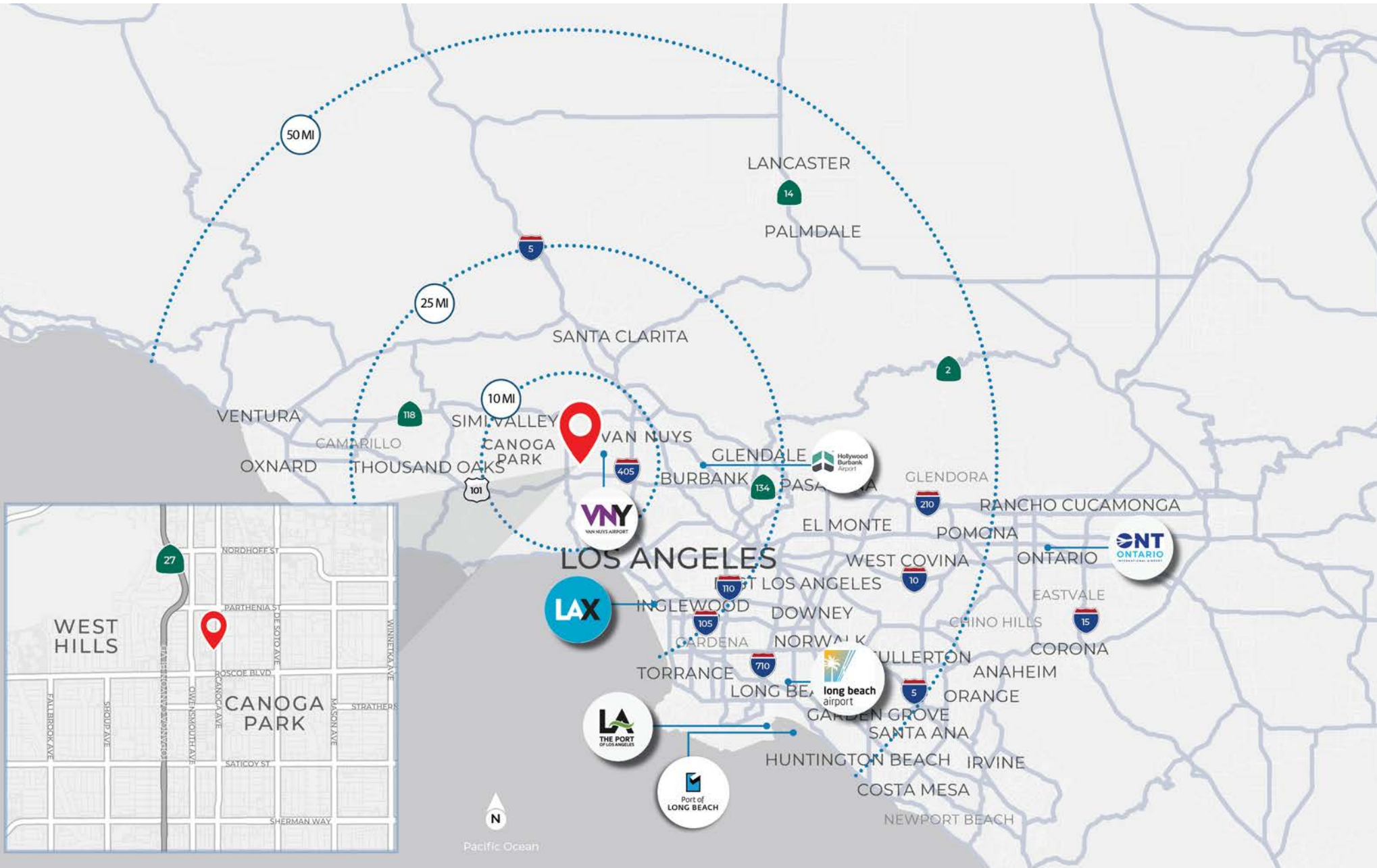
LOCATION MAP



AMENITIES MAP



RADIUS MAP



8411-8431
CANOGA AVE
Canoga Park, CA 91304

CANOGA VILLAGE
INDUSTRIAL PARK
9,060-30,000 AVAILABLE



WEST VALLEY INDUSTRIAL UNITS FOR LEASE

MATT EHRLICH
Executive Vice President
d. 818 421 1661
mehrlich@naicapital.com
CA DRE #01936772

SEAN IEZZA
Associate
d. 805 233 5228
siezza@naicapital.com
CA DRE #02220089

NAI CAPITAL
15821 Ventura Blvd
Suite #320
Encino, CA 91436
818-905-2400

NAI Capital
COMMERCIAL REAL ESTATE SERVICES, WORLDWIDE