

**7350 & 7356  
GREENBUSH AVE**  
*North Hollywood, CA 91605*

**MANUFACTURING  
BUILDING FOR SALE**

**10,661 SQFT AVAILABLE**

**\$4,175,000.00**



**HIGH POWER INDUSTRIAL MANUFACTURING**

**MATT EHRLICH**  
Executive Vice President  
d. 818 421 1661  
mehrlich@naicapital.com  
CA DRE #01936772

**SEAN IEZZA**  
Associate  
d. 805 233 5228  
siezza@naicapital.com  
CA DRE #02220089

**NAI CAPITAL**  
15821 Ventura Blvd  
Suite #320  
Encino, CA 91436  
818-905-2400

**NAI Capital**  
COMMERCIAL REAL ESTATE SERVICES, WORLDWIDE

# COMBINED PROPERTY HIGHLIGHTS



**10,661  
Square Feet**



**High Power  
800 AMPS**

- **Combined Building Area:** 10,661 SF
- **Combined Land Area:** 22,197 SF (0.51 AC)
- **Year Built:** 1964
- **Loading Doors:** 2
- **Clear Height:** 11 and 12
- **Power:** 800 AMPS, 240 Volt, 3 Phase, 4 Wire
- **Office SF:** 1,775 SF Combined Both Buildings
- **Restrooms:** 5
- **Parking:** 12 Spaces Combined
- **Sprinklered:** No
- **Zoning:** M2
- **7350 Greenbush Avenue:** APN 2328-027-060
- **7356 Greenbush Avenue:** APN: 2328-027-050



# 7350 GREENBUSH AVE

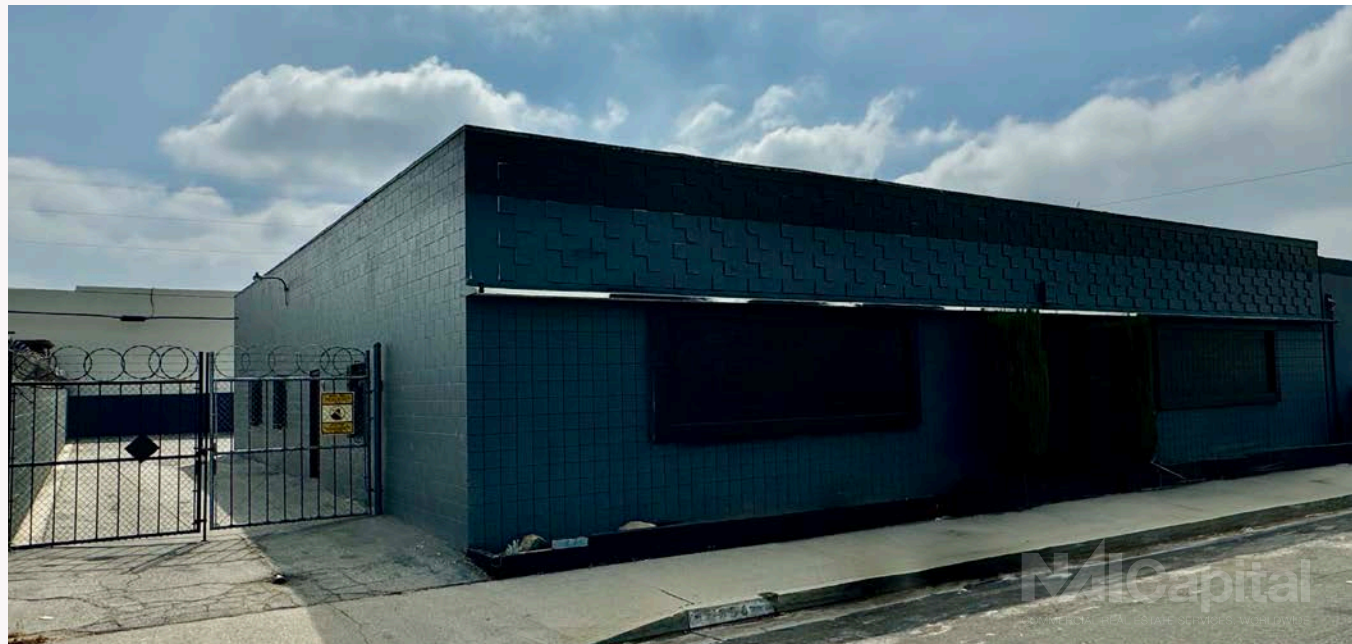


**5,691  
Square Feet**



**High Power  
800 AMPS**

- **Building Area:** 5,691 SF
- **Land Area:** 11,998 SF (0.28 AC)
- **Year Built:** 1964
- **Loading Doors:** 1 - 10x12
- **Clear Height:** 12 Feet
- **Power:** 800 AMPS, 240 Volts, 3 Phase, 4 Wire
- **Office SF:** 1,285 SF
- **Restrooms:** 3
- **Parking:** 7 spaces
- **Sprinklered:** No
- **Zoning:** M2
- **7350 Greenbush Avenue:** APN 2328-027-060
- **7356 Greenbush Avenue:** APN: 2328-027-050



# 7356 GREENBUSH AVE



**4,970  
Square Feet**



**High Power  
200 AMPS**

- **Building Area:** 4,970 SF
- **Land Area:** 10,199 SF (0.23 AC)
- **Year Built:** 1964
- **Loading Doors:** 1 - 10x12
- **Clear Height:** 11 Feet
- **Power:** 200 AMPS, 240 Volts, 3 Phase, 4 Wire
- **Office SF:** 490 SF
- **Restrooms:** 2
- **Parking:** 5 spaces
- **Sprinklered:** No
- **Zoning:** M2
- **7350 Greenbush Avenue:** APN 2328-027-060
- **7356 Greenbush Avenue:** APN: 2328-027-050



# PROPERTY PHOTOS



# PROPERTY PHOTOS



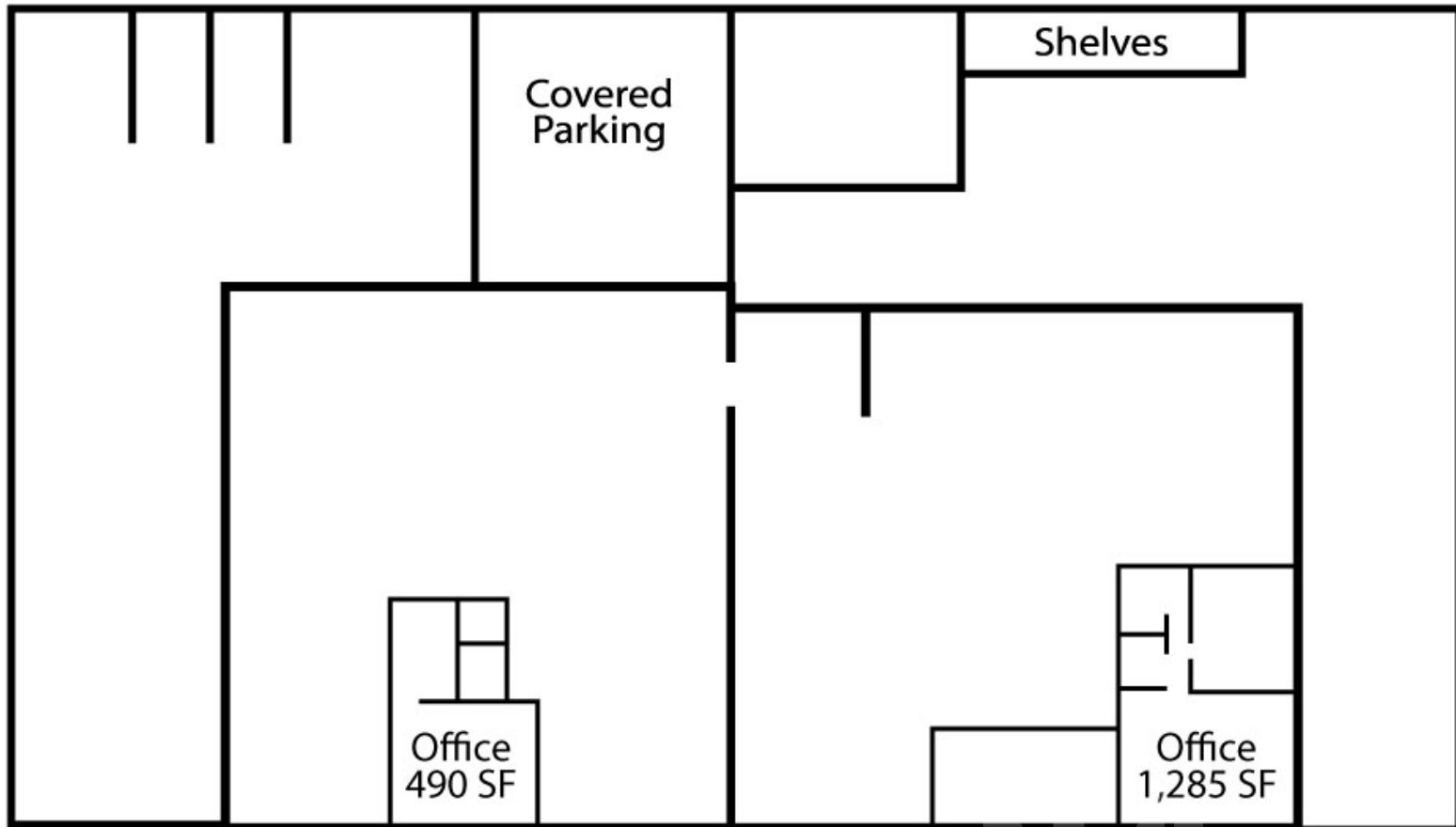
# PROPERTY PHOTOS



# FLOOR PLAN

7356 Greenbush

7350 Greenbush



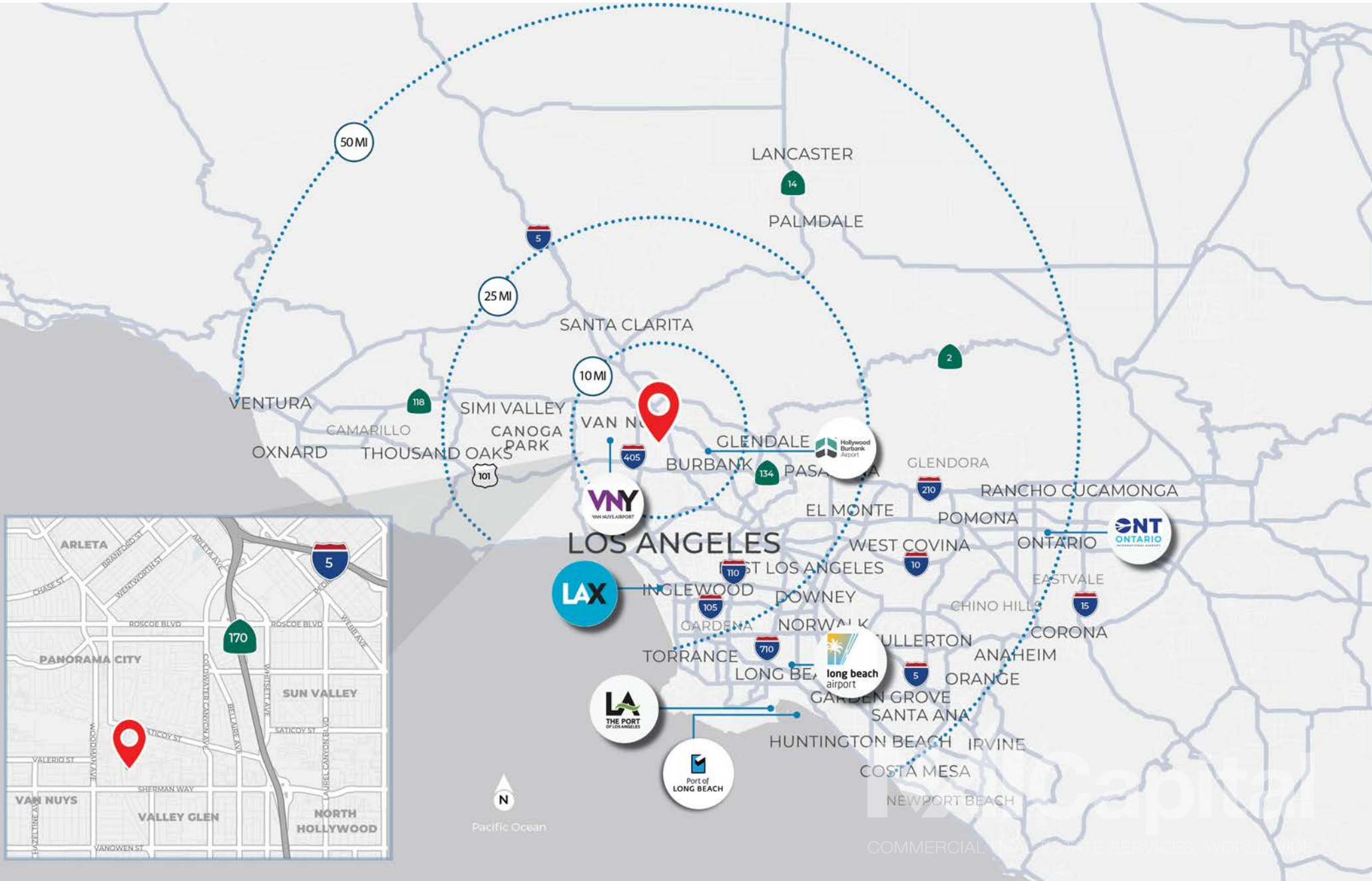
# LOCATION MAP



# AMENITIES MAP



# RADIUS MAP



# NOHO AREA OVERVIEW

North Hollywood, often referred to as NoHo, is a vibrant neighborhood nestled in the San Fernando Valley within Los Angeles County. Located approximately nine miles north of Hollywood and 16 miles from Downtown LA, NoHo covers around six square miles and is home to the renowned NoHo Arts District. This dynamic community is bordered by Sun Valley to the north, Burbank to the east, Toluca Lake and Studio City to the south, and Valley Village and Valley Glen to the west. With Highway 170 running through the area, residents and visitors enjoy easy access to major freeways including the 5, 101, 134, and 405.

At the heart of North Hollywood is the NoHo Arts District, a one-square-mile creative enclave. Known for its thriving arts scene, the district features over 20 professional live theaters, dance studios, art galleries, music venues, and eclectic dining options. It is a haven for actors, artists, musicians, and enthusiasts, making NoHo the place “Where the Arts Are Made.” The district also serves as a prime location for retail businesses, intimate entertainment venues, and a growing nightlife scene, all while maintaining a distinctly urban and creative vibe.

North Hollywood’s economic landscape is equally compelling, with a robust retail sector supported by a strong local economy. The neighborhood is rapidly transforming into a regional hub, driven by a growing cluster of tech, production, healthcare, and creative companies offering high-paying local jobs. The Metro station enhances connectivity, making commuting easier for residents and providing transit for tourists. Key attractions such as the Academy of Television Arts & Sciences, Universal Studios, the International Film Festival, and the Art Institute of California – Hollywood continue to draw thousands of visitors and workers to the area each year. Coworking spaces are also on the rise, offering flexible office options for businesses and self-employed workers alike.

Real estate investment is booming in the NoHo Arts District, which has become a sought-after retail and residential hub. New developments like NoHo West, a mixed-use lifestyle center, along with popular destinations such as NoHo Commons and Lankershim Plaza, are transforming the area. Luxury live/work condo lofts and premier multifamily developments, including the Lofts at NoHo Commons and Living at NoHo, provide class A housing options that attract a built-in consumer base for local and national businesses alike.



**7350 & 7356  
GREENBUSH AVE**  
*North Hollywood, CA 91605*

**MANUFACTURING  
BUILDING FOR SALE**

**10,661 SQFT AVAILABLE**

**\$4,175,000.00**



## **HIGH POWER INDUSTRIAL MANUFACTURING**

**MATT EHRLICH**  
Executive Vice President  
d. 818 421 1661  
[mehrlich@naicapital.com](mailto:mehrlich@naicapital.com)  
CA DRE #01936772

**SEAN IEZZA**  
Associate  
d. 805 233 5228  
[siezza@naicapital.com](mailto:siezza@naicapital.com)  
CA DRE #02220089

**NAI CAPITAL**  
15821 Ventura Blvd  
Suite #320  
Encino, CA 91436  
818-905-2400

**NAI Capital**  
COMMERCIAL REAL ESTATE SERVICES, WORLDWIDE.

No warranty, express or implied, is made as to the accuracy of the information contained herein. This information is submitted subject to errors, omissions, change of price, rental or other conditions, withdrawal without notice, and is subject to any special listing conditions imposed by our principals. Cooperating brokers, buyers, tenants and other parties who receive this document should not rely on it, but should use it as a starting point of analysis, and should independently confirm the accuracy of the information contained herein through a due diligence review of the books, records, files and documents that constitute reliable sources of the information described herein. NAI Capital CA DRE #02130474