

2 MONTHS FREE RENT ON 3-YEAR TERM

3 MONTHS FREE RENT ON 5-YEAR TERM



**Institutionally Owned & Managed / Flexibility to Expand
Convenient Access to the 101 Freeway**



1,200 – 9,500 SF AVAILABLE FOR LEASE

HIGHLY SOUGHT AFTER TARZANA INDUSTRIAL UNITS

18320-18330 Oxnard Street | Tarzana, CA | Los Angeles County



Building Features



Property Highlights

- Clear Height: 16'
- 1 Ground Level Door
- 10x14 Automated Power Roll Up Door
- Polished Concrete Floors
- Skylights
- 1 ADA Restroom
- Excellent Southern Valley Location
- Close to the 101 Freeway
- New Insulation
- Led Motion Sensor Lights



Building Features



18320 Oxnard St. Unit 2

- Warehouse SF: 1,200 SF
- Office SF: 0 SF
- Lease Rate: \$1.90 Modified Gross
- Available Now
- Dead Storage, No Office, No HVAC

18330 Oxnard St.

- Warehouse SF: 6,222 SF
- Office SF: 3,278 SF
- Lease Rate: \$1.65 Modified Gross
- Available Now

Property Photos

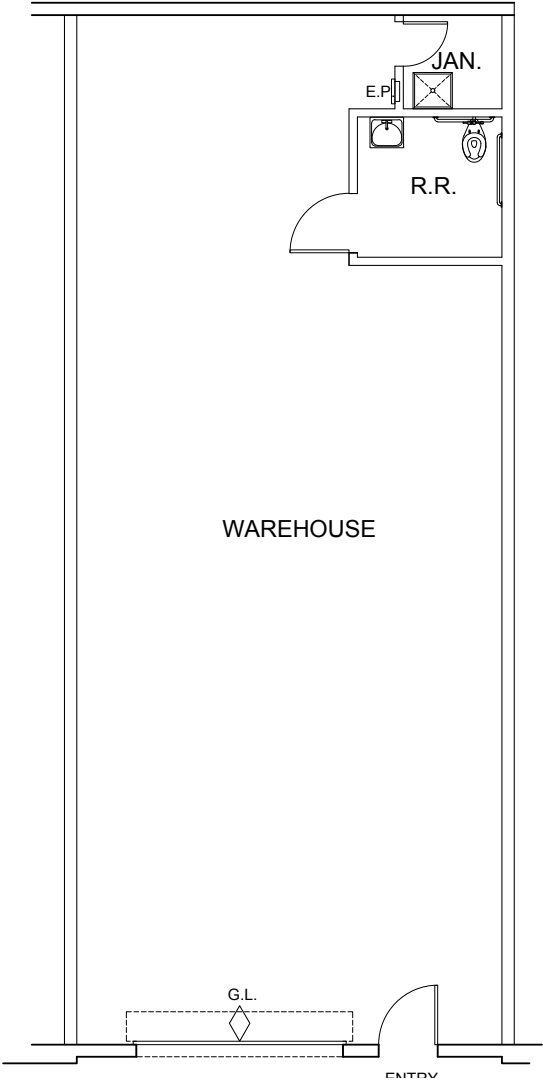


Property Photos



Property Photos





WAREHOUSE
1,200 SF

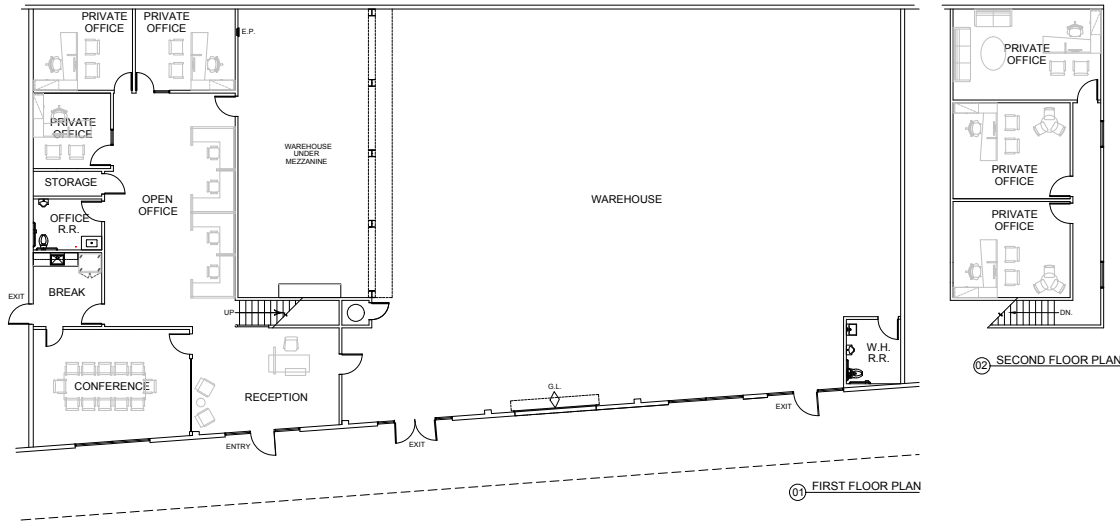
OFFICE
0 SF

TOTAL
1,200 SF

Plan layout subject to field conditions and may differ from plan as shown. All information presented on this drawing is presumed to be accurate, however tenant should verify pertinent information prior to committing to a lease. Any furniture or appliances shown on plan are for concept only and will be tenant provided.

Floor Plan

18330 Oxnard Street



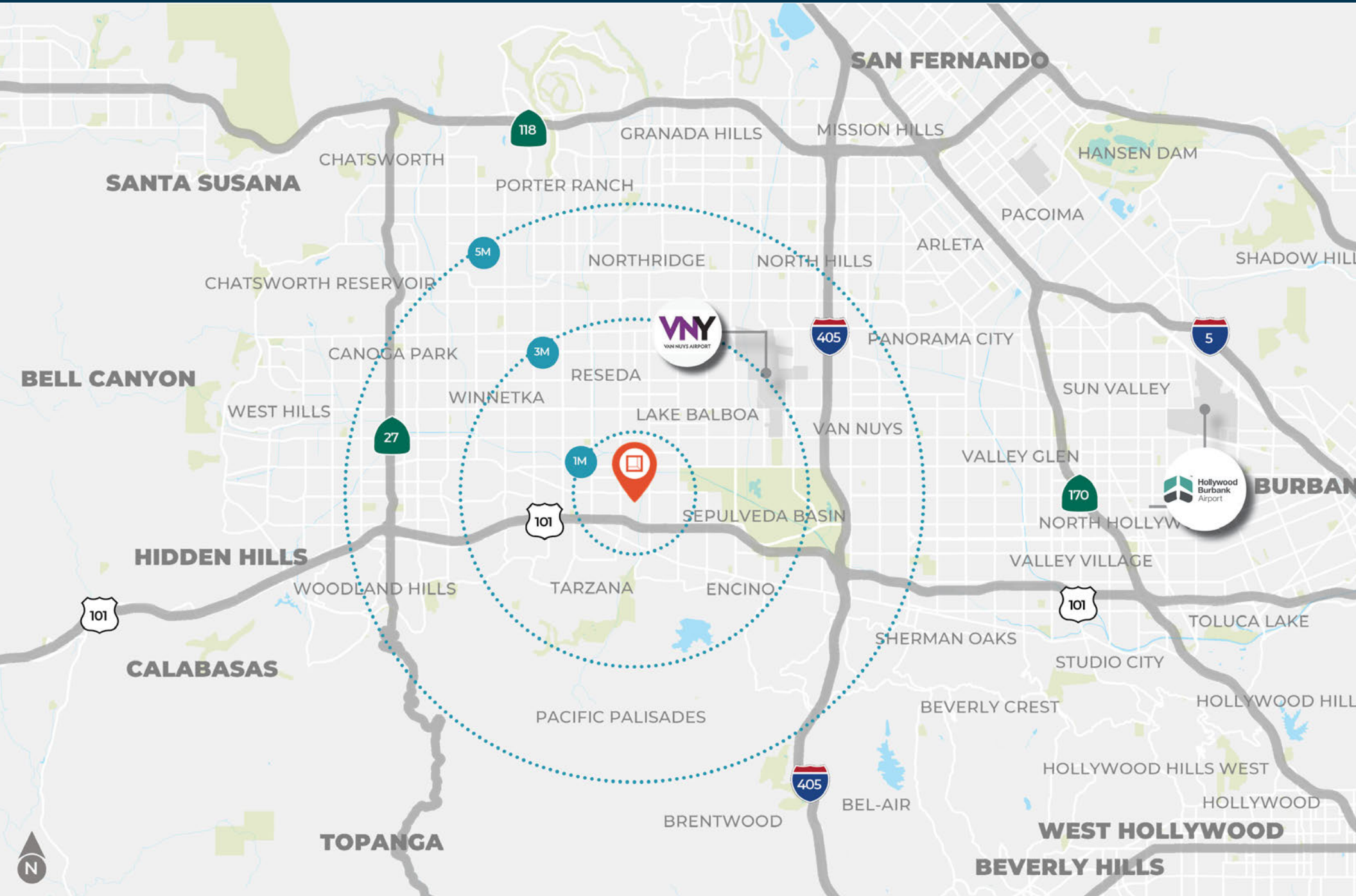
WAREHOUSE
6,222 SF

OFFICE
3,278 SF

TOTAL
9,500 SF

Plan layout subject to field conditions and may differ from plan as shown. All information presented on this drawing is presumed to be accurate, however tenant should verify pertinent information prior to committing to a lease. Any furniture or appliances shown on plan are for concept only and will be tenant provided.

Location



Amenities Map



TARZANA

LAKE BALBOA

ENCINO



FOOD & BEVERAGES

RETAILERS

GAS STATIONS

BANKS



TARZANA VILLAGE



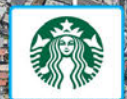
D'Amore's Pizza

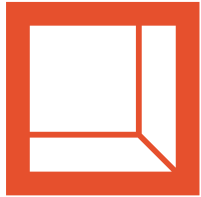


T Mobile



Office DEPOT





**Rexford
Industrial**

Leasing Contact

Matt Ehrlich
Executive Vice President
818-933-2364
mehrlich@naicapital.com
Cal DRE Lic #01936772

NAI Capital
COMMERCIAL REAL ESTATE SERVICES, WORLDWIDE

15821 Ventura Boulevard
Suite 320
Encino, California 91436

© NAI Capital Commercial, Inc. Content in this document may include AI generated or altered text, images and/or analysis. No warranty, express or implied, is made as to the accuracy of the information contained herein. This information is submitted subject to errors, omissions, change of price, rental or other conditions, withdrawal without notice, and is subject to any special listing conditions imposed by our principals. Cooperating brokers, buyers, tenants and other parties who receive this document should not rely on it, but should use it as a starting point of analysis, and should independently confirm the accuracy of the information contained herein through a due diligence review of the books, records, files and documents that constitute reliable sources of the information described herein. Unedited images viewable at naicapital.com | Cal DRE Lic #02130474