

FOR SALE OR LEASE – THE FAIRFAX BUILDING

NEW CONSTRUCTION: RETAIL, OFFICE & LIVE/WORK

920 N. FAIRFAX AVE., WEST HOLLYWOOD



JARED SWEDELSON
Vice President
d: 818-742-1632
m: 818-644-7597
jswedelson@naicapital.com
Cal DRE Lic #02105146



BRIAN LUFT
Executive Vice President
d: 310-440-8500
m: 310-709-5838
bluft@naicapital.com
Cal DRE Lic #00995245

NAI CAPITAL - WEST LOS ANGELES
11835 W. Olympic Blvd., Suite 700E
Los Angeles, CA 90064
d: 310-806-6100
f: 310-806-6101
www.naicapital.com

NAI Capital
COMMERCIAL REAL ESTATE SERVICES, WORLDWIDE

PROPERTY OVERVIEW

BUILDING SIZE

	SF	RATE
Retail:	669 SF	\$6.50/SF NNN
Office:	4,932 SF	\$5.50/SF NNN
Live/Work:	4,417 SF	\$5.50/SF NNN

TOTAL BUILDING SIZE:

10,018 RSF

FOR SALE PRICE:

Undisclosed

PARKING:

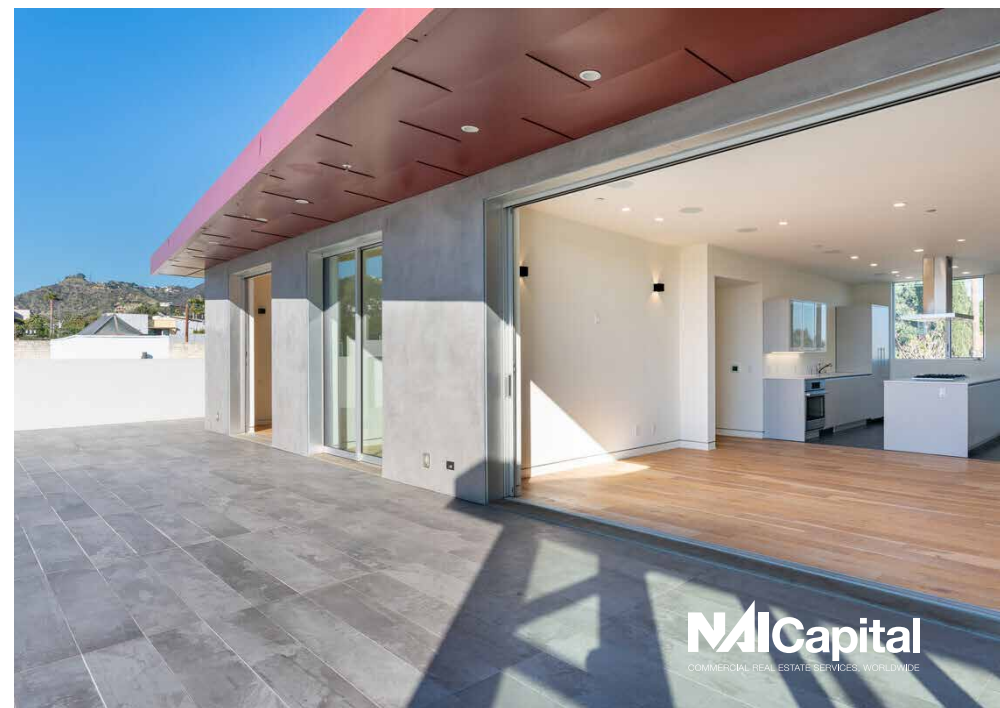
22 spaces in gated two level garage

KEY HIGHLIGHTS:

- **New Construction:** Never occupied with immaculate modern architecture
- **Unlimited functionality:** Possibilities for amazing retailers, creative office, design showroom, medical, live/work, residential etc...
- **Location:** Close to great restaurants, retailers and nightlife

WELCOME TO THE FAIRFAX

Encompassing a total of 10,018 rentable square feet, THE FAIRFAX boasts an array of enticing and unique features. These include 22 reserved spaces, with subterranean level parking conveniently accessed via a car elevator. The street level contains grade level parking plus 669 square feet of street-level storefront retail. The second floor showcases an expansive 4,932 square feet of open floor, creative office space, designed with a modern touch and abundant natural light throughout. The third floor offers a captivating 4,417 square feet penthouse with a large outdoor deck with views of the Hollywood Hills. Both the 2nd & 3rd Floors are zoned for Live/Work.



RETAIL

SIZE

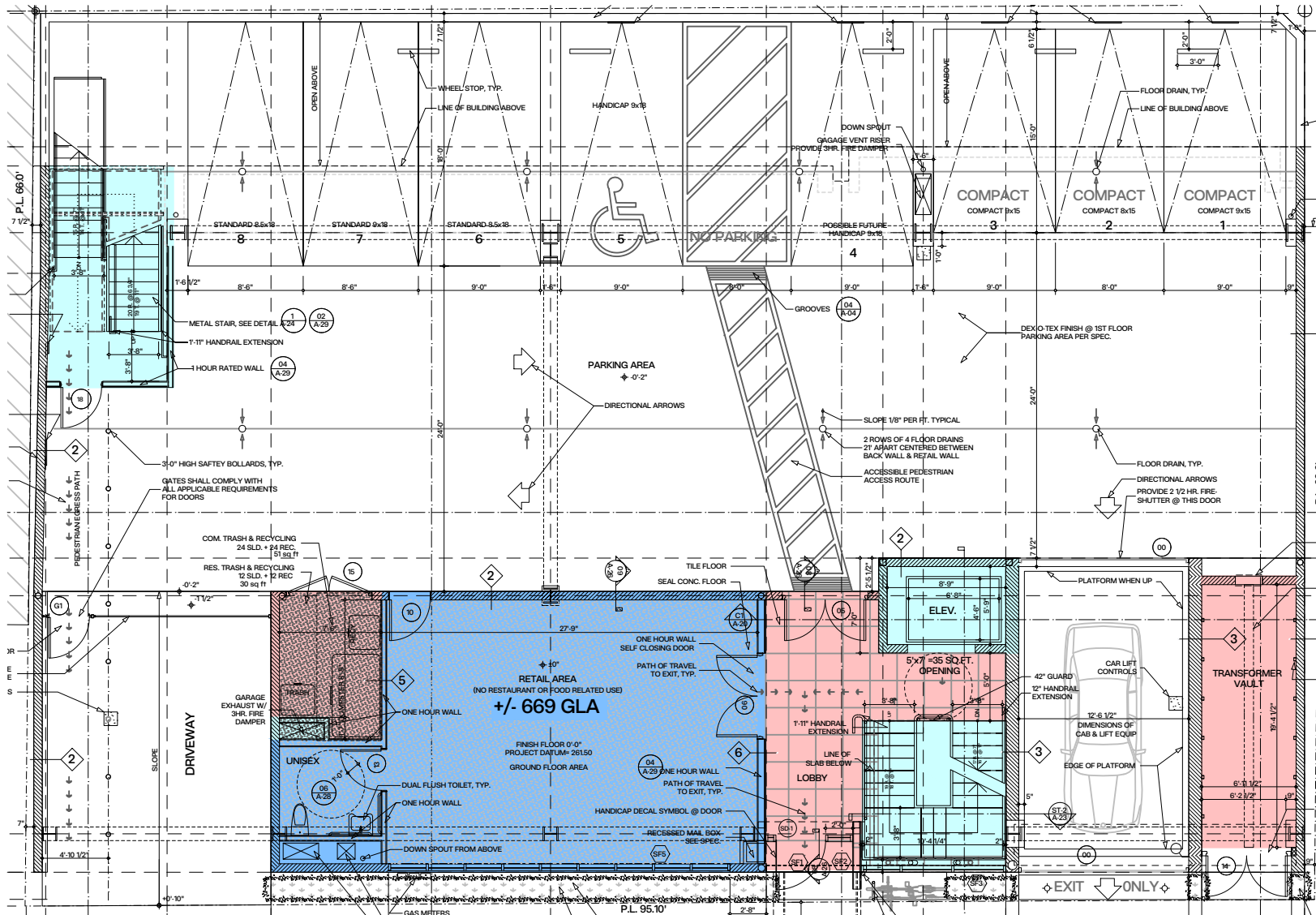
669 SF

FEATURES

- Ground floor space
- Wide open layout with retail window frontage
- Private unisex restroom



GROUND FLOOR RETAIL FLOOR PLAN



Major Vertical Penetration

Floor Service Area

Building Service Area

Occupant Storage

Office Area

Retail Area

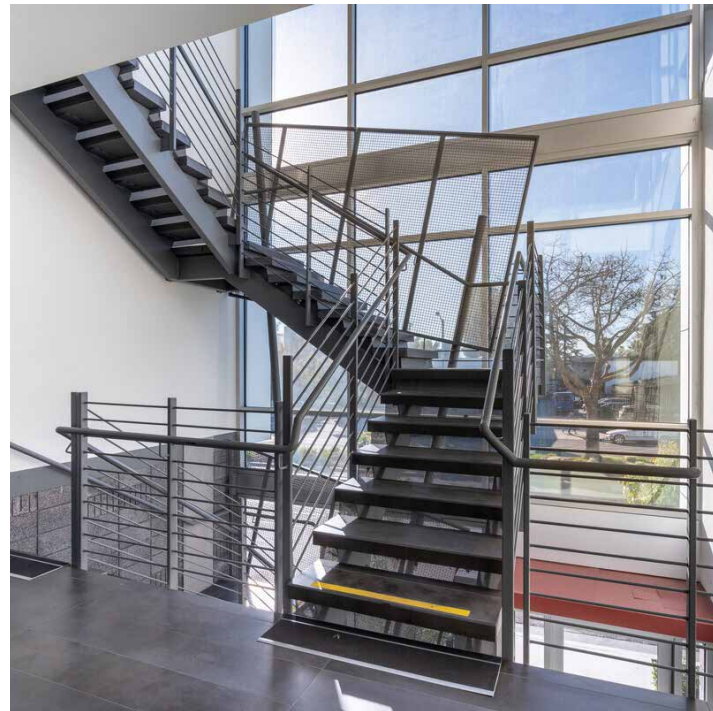
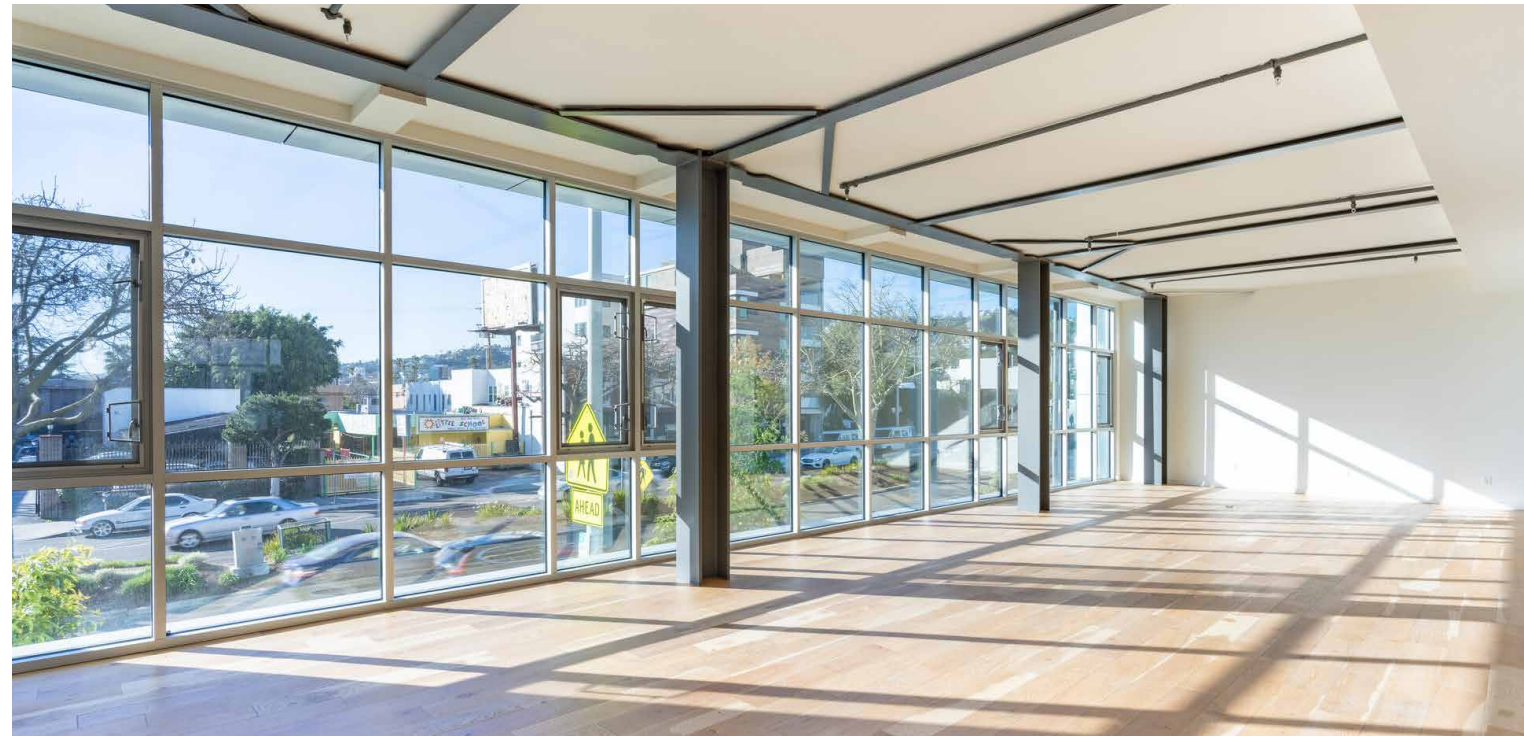
CREATIVE OFFICE - 2ND FLOOR

SIZE

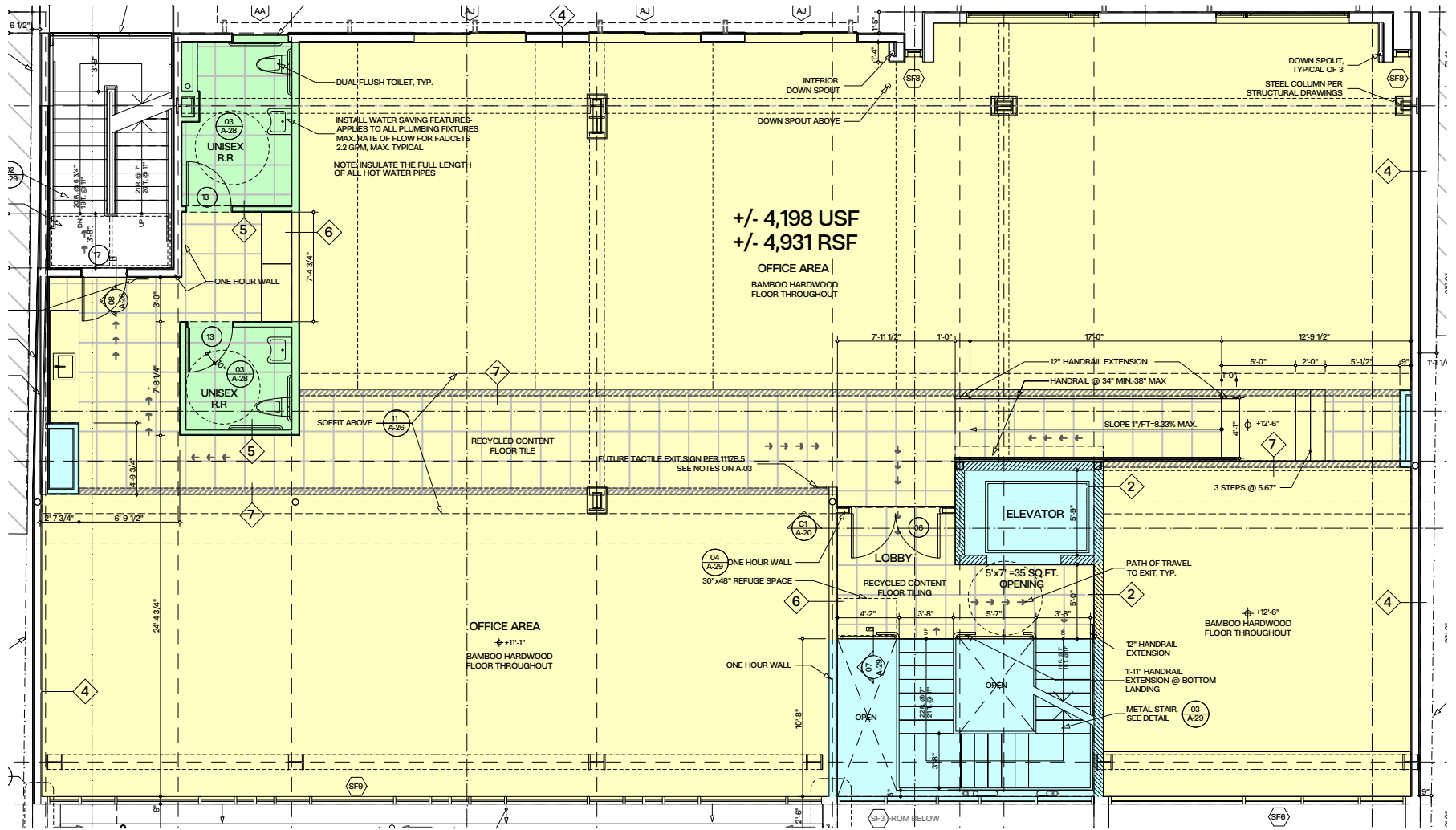
4,932 RSF

FEATURES

- Tall, floor to ceiling glass windows throughout
- Exposed steel
- Large open area
- Kitchenette
- Two unisex private restrooms



CREATIVE OFFICE FLOOR PLAN



Major Vertical Penetration

Floor Service Area

Building Service Area

Occupant Storage

Office Area

Retail Area

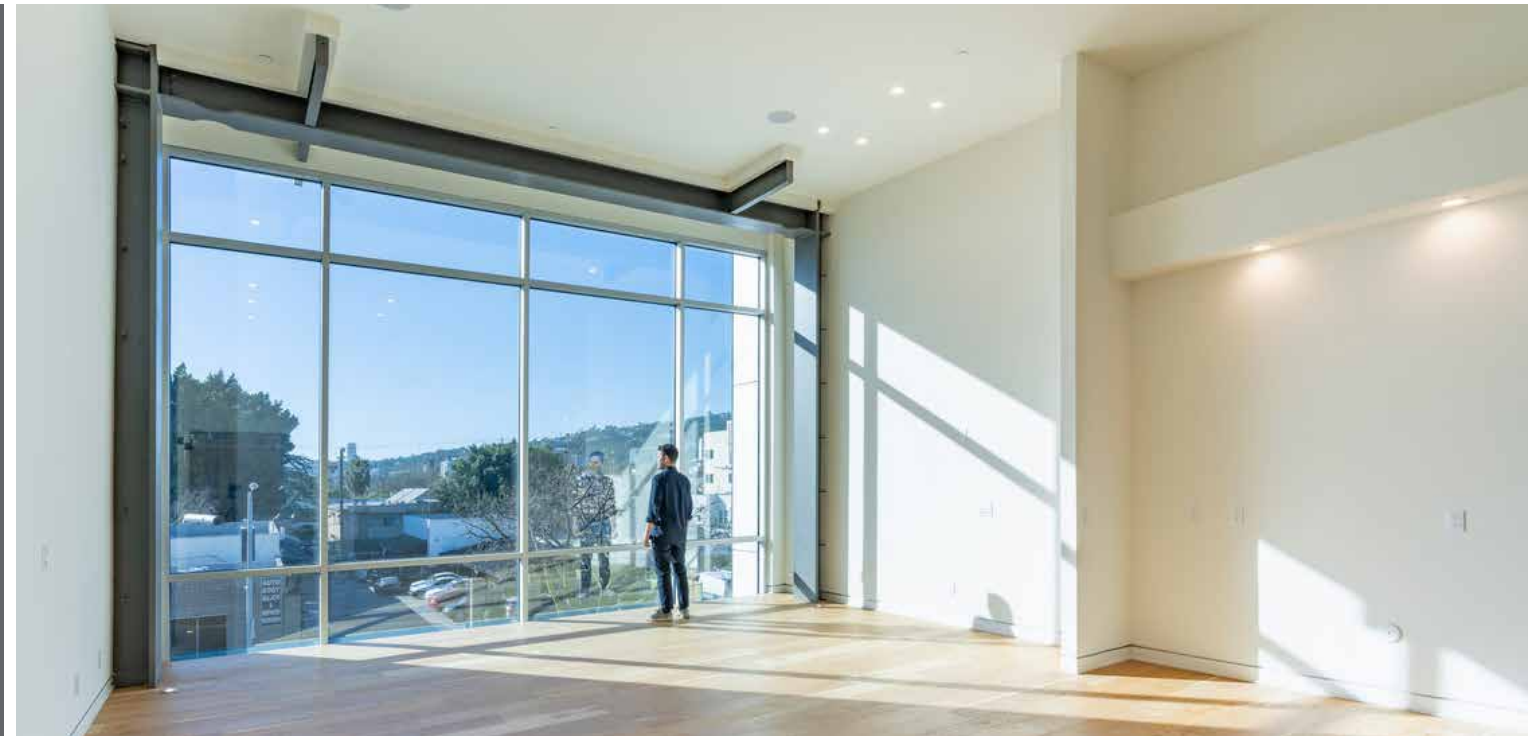
LIVE/WORK, OFFICE, OR RESIDENTIAL - PENTHOUSE FLOOR

SIZE

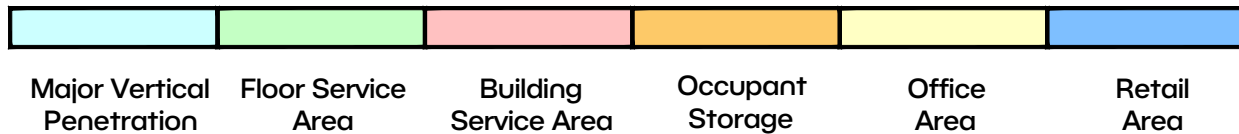
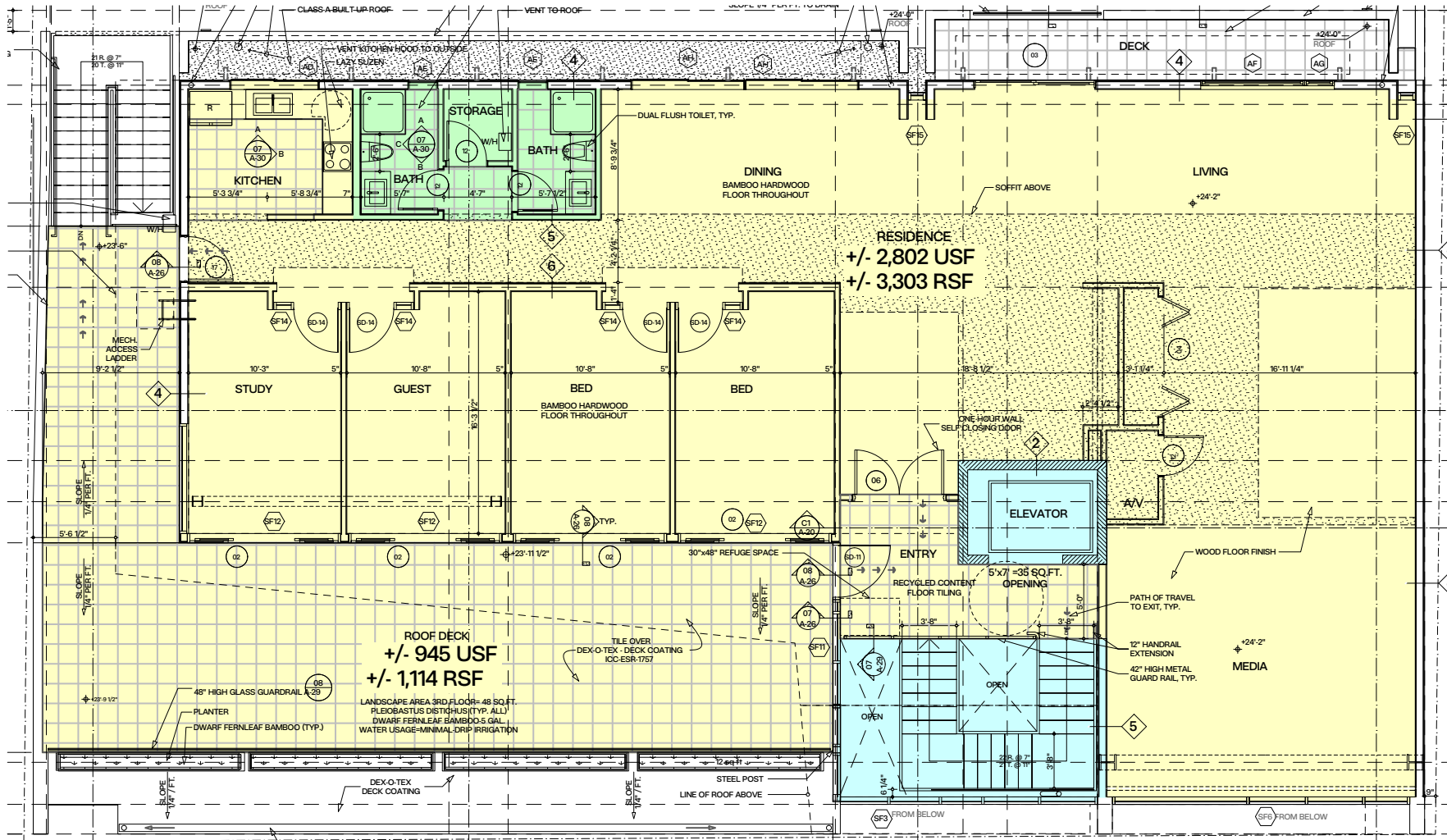
4,417 RSF

FEATURES

- Penthouse space
- Four rooms & four bathrooms
- Private rooftop balcony with views overlooking the Hollywood Hills
- Tall, floor to ceiling windows throughout



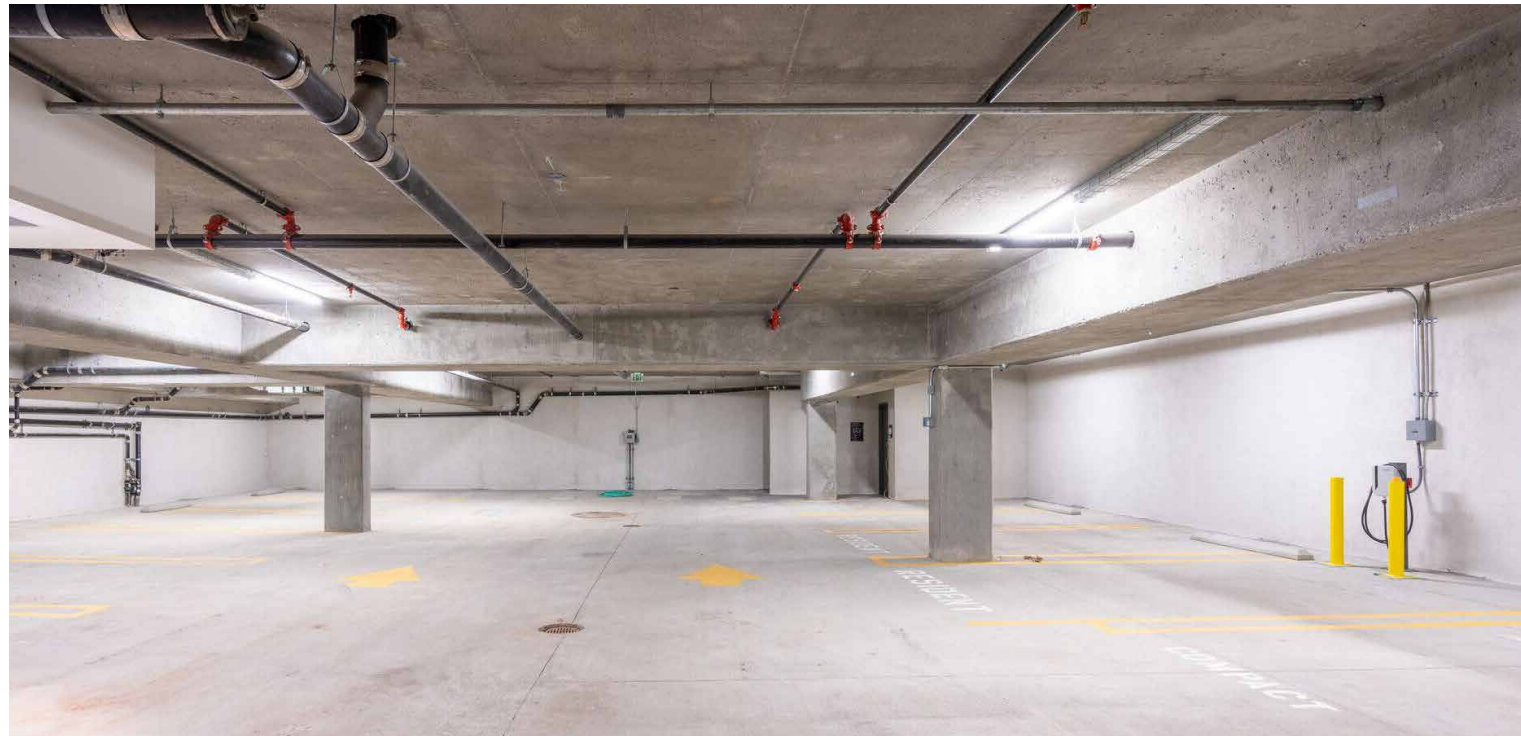
LIVE/WORK, OFFICE, OR RESIDENTIAL FLOOR PLAN



ON-SITE PARKING

FEATURES

- **Parking: 22 striped space in secured, and gated garage**
- **8 spaces on grade level, and 14 spaces on the lower-level**
- **Lower level parking is accessed by car elevator (no ramps) & is fully air-conditioned**
- **2 electric vehicle charging stations**



AREA OVERVIEW

West Hollywood was incorporated in 1984. As of the 2020 U.S. Census, its population was 35,757.

West Hollywood is a trendy area known for its high-energy nightlife. The fabled Sunset Strip features the Chateau Marmont, a swanky celebrity hideaway, plus comedy clubs and live music venues like the legendary Whiskey a Go Go, 1 OAK. Santa Monica Boulevard, awash in rainbow flags, is home to a number of gay bars, dance clubs and shops. WeHo also offers many of LA's most buzzworthy restaurants.

West Hollywood is home to innovative industries and a magnet for highly skilled professionals. Companies ranging from retail, tourism & nightlife, restaurants, entertainment and media, as well as arts and design are drawn to West Hollywood's creative workforce as well as its high quality of life.







WEST HOLLYWOOD DEMOGRAPHICS

	1 Mile	3 Miles	5 Miles
Population	50,363	277,094	820,348
Households	31,525	148,722	378,212
Avg, Household Income	\$135,815	\$151,509	\$136,273
Businesses	4,539	34,720	69,447

WEST HOLLYWOOD EMPLOYERS

Rank	Employer	Employees
1	LA County Metropolitan Transportation Authority	559
2	Target Corp	289
3	City Grid Media/Inter Active Corp	288
4	City of West Hollywood	247
5	1 OAK LA	200

RETAIL MAP

-  DINING
-  SHOPPING
-  STUDIOS
-  HOTELS



CONTACT INFORMATION

JARED SWEDELSON

Vice President
d: 818-742-1632
m: 818-644-7597
jswedelson@naicapital.com
Cal DRE Lic #02105146

BRIAN LUFT

Executive Vice President
d: 310-440-8500
m: 310-709-5838
bluft@naicapital.com
Cal DRE Lic #00995245

NAI CAPITAL - WEST LOS ANGELES

11835 W. Olympic Blvd., Suite 700E
Los Angeles, CA 90064
d: 310-806-6100
f: 310-806-6101
www.naicapital.com

No warranty, express or implied, is made as to the accuracy of the information contained herein. this information is submitted subject to errors, omissions, change of price, rental or other conditions, withdrawal without notice, and is subject to any special listing conditions imposed by our principals. cooperating brokers, buyers, tenants and other parties who receive this document should not rely on it, but should use it as a starting point of analysis, and should independently confirm the accuracy of the information contained herein through a due diligence review of the books, records, files and documents that constitute reliable sources of the information described herein. NAI Capital Cal DRE #0213047