

# 8430 SANTA MONICA BLVD., WEST HOLLYWOOD, CA

High visibility creative office space in West Hollywood



**JARED SWEDELSON**

Vice President  
d: 818-742-1632  
m: 818-644-7597  
jswedelson@naicapital.com  
Cal DRE Lic #02105146

**NAI CAPITAL - WEST LOS ANGELES**

11835 W. Olympic Blvd., Suite 700E  
Los Angeles, CA 90064  
d: 310-806-6100  
f: 310-806-6101  
www.naicapital.com



COMMERCIAL REAL ESTATE SERVICES, WORLDWIDE

# Building Details



## Lease Rate:

**1<sup>st</sup> Floor:** \$2.75/SF Gross

**2<sup>nd</sup> Floor:** \$3.95/SF Gross

## Spaces:

**1<sup>st</sup> Floor:** 4,665 SF

### 2<sup>nd</sup> Floor:

Unit 200: 1,079 SF

Unit 203: 216 SF

Unit 205A: 207 SF

Unit 205B: 286SF

## Parking:

1/500

## Key Highlights:

- Top building signage available
- Hard corner visibility between Santa Monica Blvd & Holloway Drive
- Floor to ceiling high class windows

1st  
Floor



# 1st Floor



## Building Specifications:

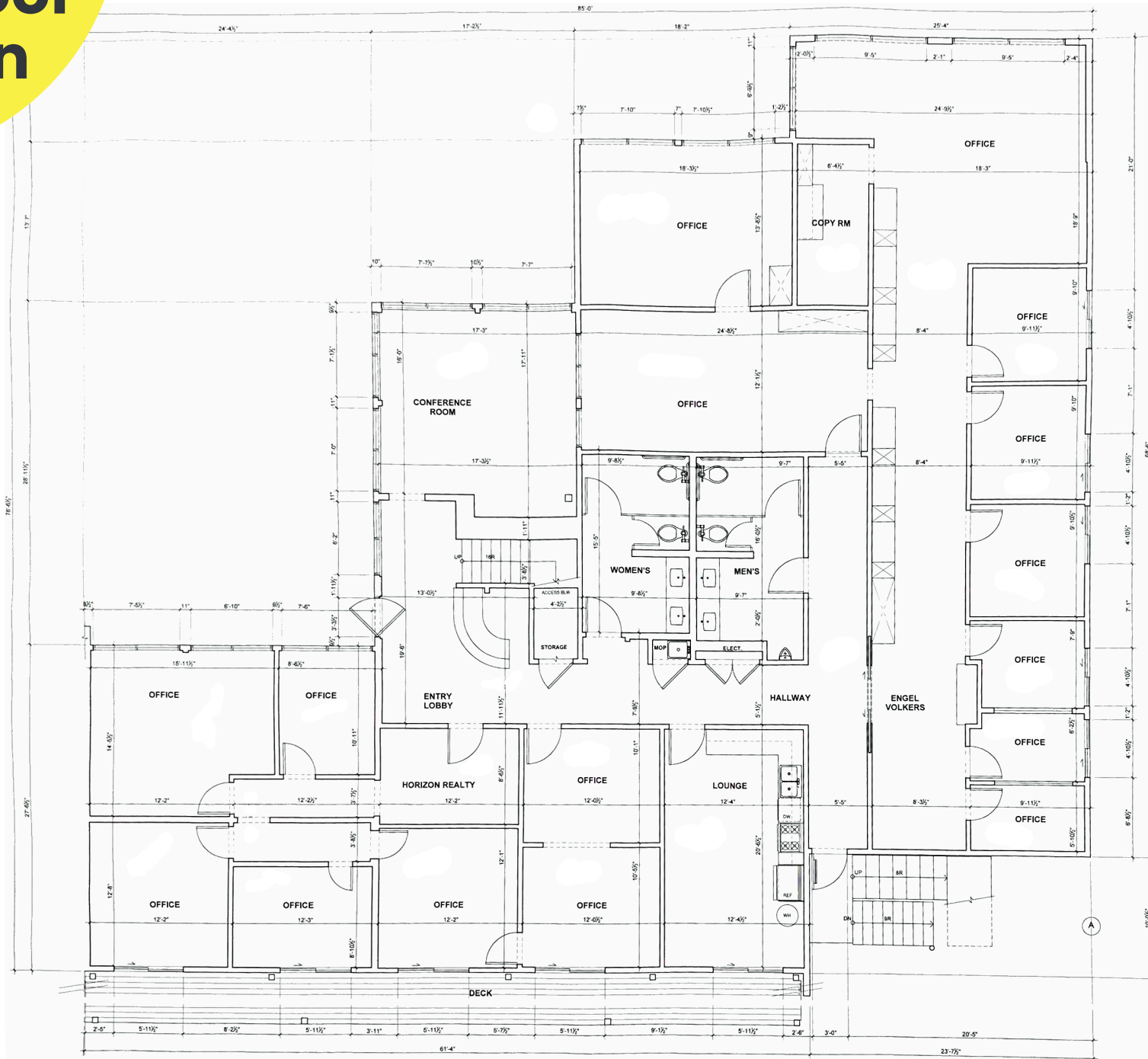
- 15 private offices
- Large conference room with double story high ceiling
- Exclusive outdoor patio
- Private kitchen/lounge
- Two dedicated restrooms



# 1st Floor



# 1<sup>ST</sup> Floor Plan



# 2<sup>nd</sup> Floor



## Unit 200:

**1,079 SF**

4 private offices, storage and outdoor patio deck

## Unit 205A:

**207 SF**

Private office

## Unit 203:

**216 SF**

Two Private offices and outdoor patio deck

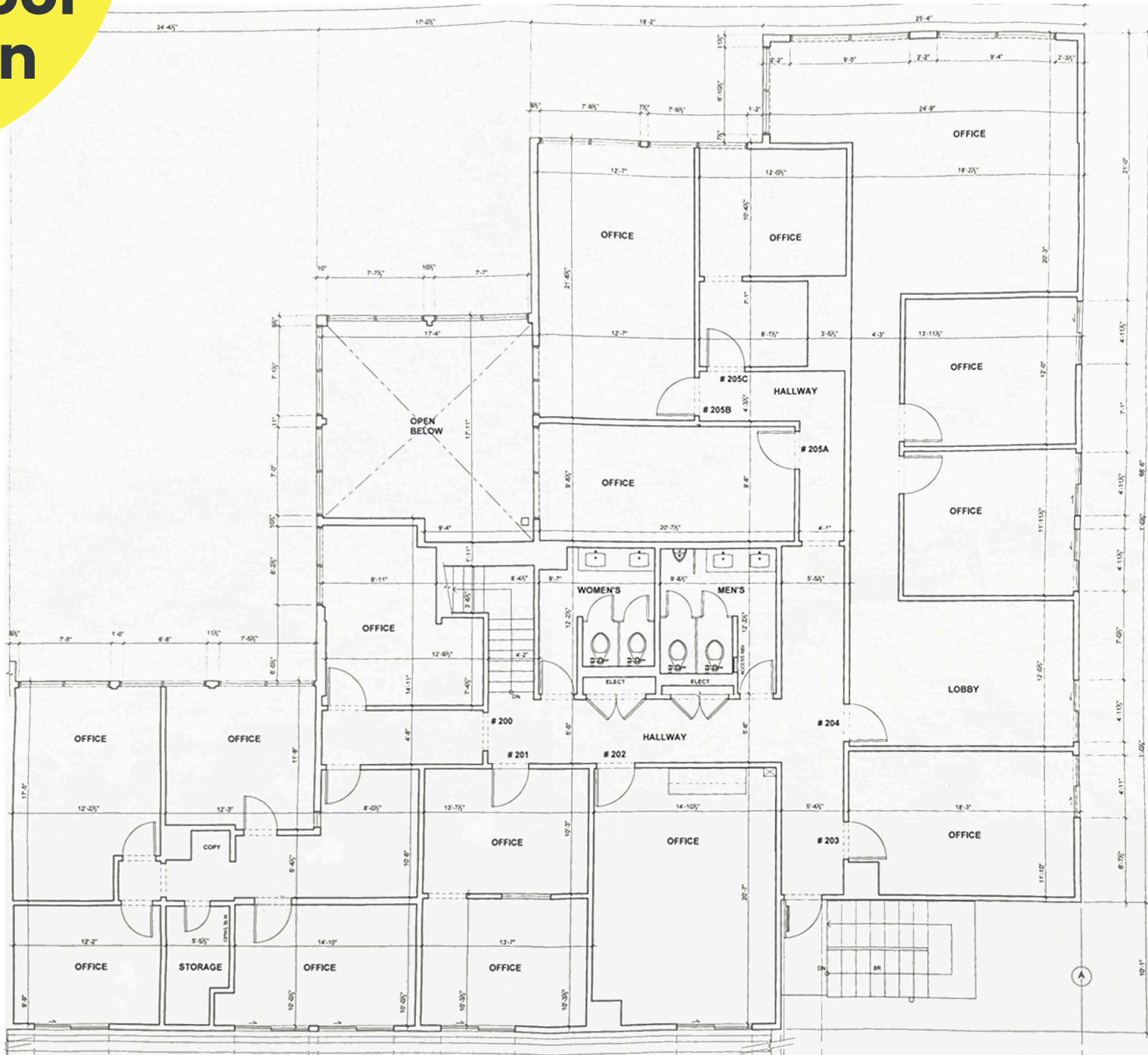
## Unit 205B:

**286 SF**

Private office



# 2<sup>ND</sup> Floor Plan



# Retail Map

## WEST HOLLYWOOD



PDC  
PACIFIC DESIGN CENTER

JR JOHN REED  
FITNESS

SHAKE SHACK

HARMONY STUDIOS  
PILATES

SITE

N LA CIENEGA BLVD

SOHO HOUSE

BARNEY'S BEATRIX  
1911-1920

HOLLOWAY DR

SANTA MONICA BLVD

# Contact Info

## JARED SWEDELSON

Vice President  
d: 818-742-1632  
m: 818-644-7597  
jswedelson@naicapital.com  
Cal DRE Lic #02105146

## NAI CAPITAL - WEST LOS ANGELES

11835 W. Olympic Blvd., Suite 700E  
Los Angeles, CA 90064  
d: 310-806-6100  
f: 310-806-6101  
www.naicapital.com

No warranty, express or implied, is made as to the accuracy of the information contained herein. This information is submitted subject to errors, omissions, change of price, rental or other conditions, withdrawal without notice, and is subject to any special listing conditions imposed by our principals, cooperating brokers, buyers, tenants and other parties who receive this document should not rely on it, but should use it as a starting point of analysis, and should independently confirm the accuracy of the information contained herein through a due diligence review of the books, records, files and documents that constitute reliable sources of the information described herein. NAI Capital Cal DRE #02130474