



**8380 SANTA MONICA BLVD**

West Hollywood, CA 90069



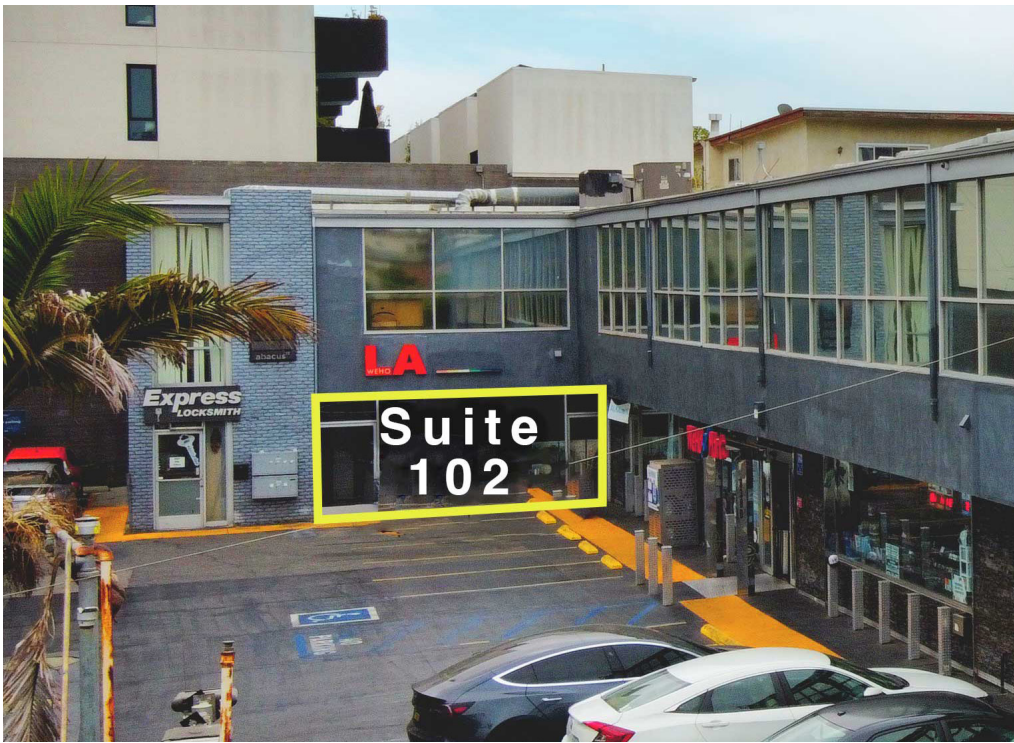
**Jared Swedelson**

Senior Associate

d: 818-742-1632 | m: 818-644-7597

[jswedelson@naicapital.com](mailto:jswedelson@naicapital.com)

Cal DRE Lic #02105146



## Property Highlights

- Prominent corner in WeHo
- Great retail traffic
- Amazing office views of the Hollywood Hills
- Floor to ceiling high windows

## Retail Availabilities

Space	SF	Price	Description
Suite 102	800 SF	\$5/SF MG	Wide open sapce with restroom and storage



Suite 102



Suite 102



## Office Availabilities

Space	SF	Price	Description
Suite 202	900 SF	\$2.99/SF MG	Wide open space, 2 private offices, built-in cabinets, and a storage closet
Suite 203	780 SF	\$2.99/SF MG	All open space with views of Hollywood Hills
Suite 204	785 SF	\$2.99/SF MG	All open space with views of Hollywood Hills



# Expansive View







## CONTACT INFORMATION

**Jared Swedelson**

Senior Associate

818.644.7597

[jswedelson@naicapital.com](mailto:jswedelson@naicapital.com)

Cal DRE Lic #02105146

**NAI Capital Commercial**

15821 Ventura Blvd., Suite 320

Encino, CA 91436

818.905.2400

[www.naicapital.com](http://www.naicapital.com)

No warranty, express or implied, is made as to the accuracy of the information contained herein. This information is submitted subject to errors, omissions, change of price, rental or other conditions, withdrawal without notice, and is subject to any special listing conditions imposed by our principals. Cooperating brokers, buyers, tenants and other parties who receive this document should not rely on it, but should use it as a starting point of analysis, and should independently confirm the accuracy of the information contained herein through a due diligence review of the books, records, files and documents that constitute reliable sources of the information described herein. NAI Capital Cal DRE #02130474