



8380 SANTA MONICA BLVD

West Hollywood, CA 90069



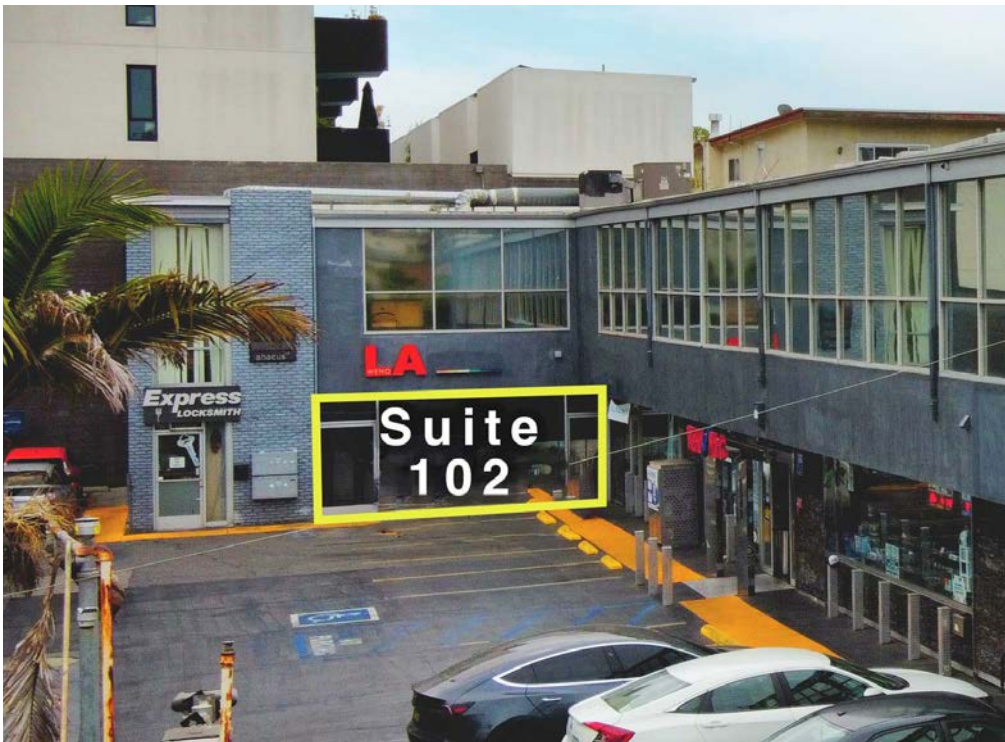
Jared Swedelson

Senior Associate

d: 818-742-1632 | m: 818-644-7597

jswedelson@naicapital.com

Cal DRE Lic #02105146



Property Highlights

- Prominent corner in WeHo
- Great retail traffic
- Amazing office views of the Hollywood Hills
- Floor to ceiling high windows

Retail Availabilities

Space	SF	Price	Description
Suite 102	800 SF	\$5/SF MG	Wide open sapce with restroom and storage



Suite 102



Suite 102

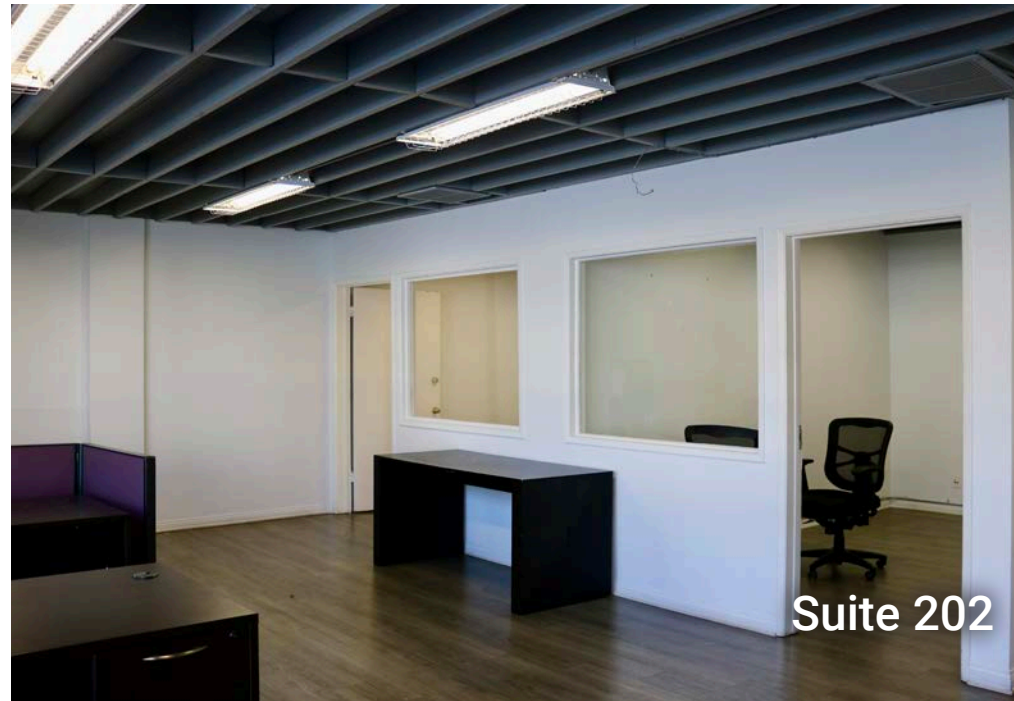


Office Availabilities

Space	SF	Price	Description
Suite 202	900 SF	\$4.00/SF MG	Wide open space, 2 private offices, built-in cabinets, and a storage closet
Suite 203	780 SF	\$2.99/SF MG	All open space with views of Hollywood Hills
Suite 204	785 SF	\$2.99/SF MG	All open space with views of Hollywood Hills



Suite 202



Suite 202

Expansive View







COMMERCIAL REAL ESTATE SERVICES, WORLDWIDE

CONTACT INFORMATION

Jared Swedelson

Senior Associate

818.644.7597

jswedelson@naicapital.com

Cal DRE Lic #02105146

NAI Capital Commercial

15821 Ventura Blvd., Suite 320

Encino, CA 91436

818.905.2400

www.naicapital.com

No warranty, express or implied, is made as to the accuracy of the information contained herein. This information is submitted subject to errors, omissions, change of price, rental or other conditions, withdrawal without notice, and is subject to any special listing conditions imposed by our principals. Cooperating brokers, buyers, tenants and other parties who receive this document should not rely on it, but should use it as a starting point of analysis, and should independently confirm the accuracy of the information contained herein through a due diligence review of the books, records, files and documents that constitute reliable sources of the information described herein. NAI Capital Cal DRE #02130474