

# 8335 SUNSET BLVD ROOFTOP/RESTAURANT

**NAI Capital**  
COMMERCIAL REAL ESTATE SERVICES WORLDWIDE



EXCLUSIVELY LISTED BY:



**Jared Swedelson**

Vice President  
d: 818-742-1632  
m: 818-644-7597  
jswedelson@naicapital.com  
Cal DRE Lic #02105146

**NAI Capital - Los Angeles**

11150 Santa Monica Blvd.  
Suite 1550  
Los Angeles, CA 90025  
310.806.6100  
naicapital.com

*West Hollywood*

No warranty, express or implied, is made as to the accuracy of the information contained herein. This information is submitted subject to errors, omissions, change of price, rental or other conditions, withdrawal without notice, and is subject to any special listing conditions imposed by our principals. Cooperating brokers, buyers, tenants and other parties who receive this document should not rely on it, but should use it as a starting point of analysis, and should independently confirm the accuracy of the information contained herein through a due diligence review of the books, records, files and documents that constitute reliable sources of the information described herein. NAI Capital CA DRE #02130474



## LEASE DETAILS



**SIZE: 5,000 SF APPROX.  
(TO BE VERIFIED)**



**USE: RESTAURANT**



**RATE: NEGOTIABLE**



**ICONIC SUNSET STRIP**

# EXPANSIVE VIEWS



# PROPERTY PHOTOS



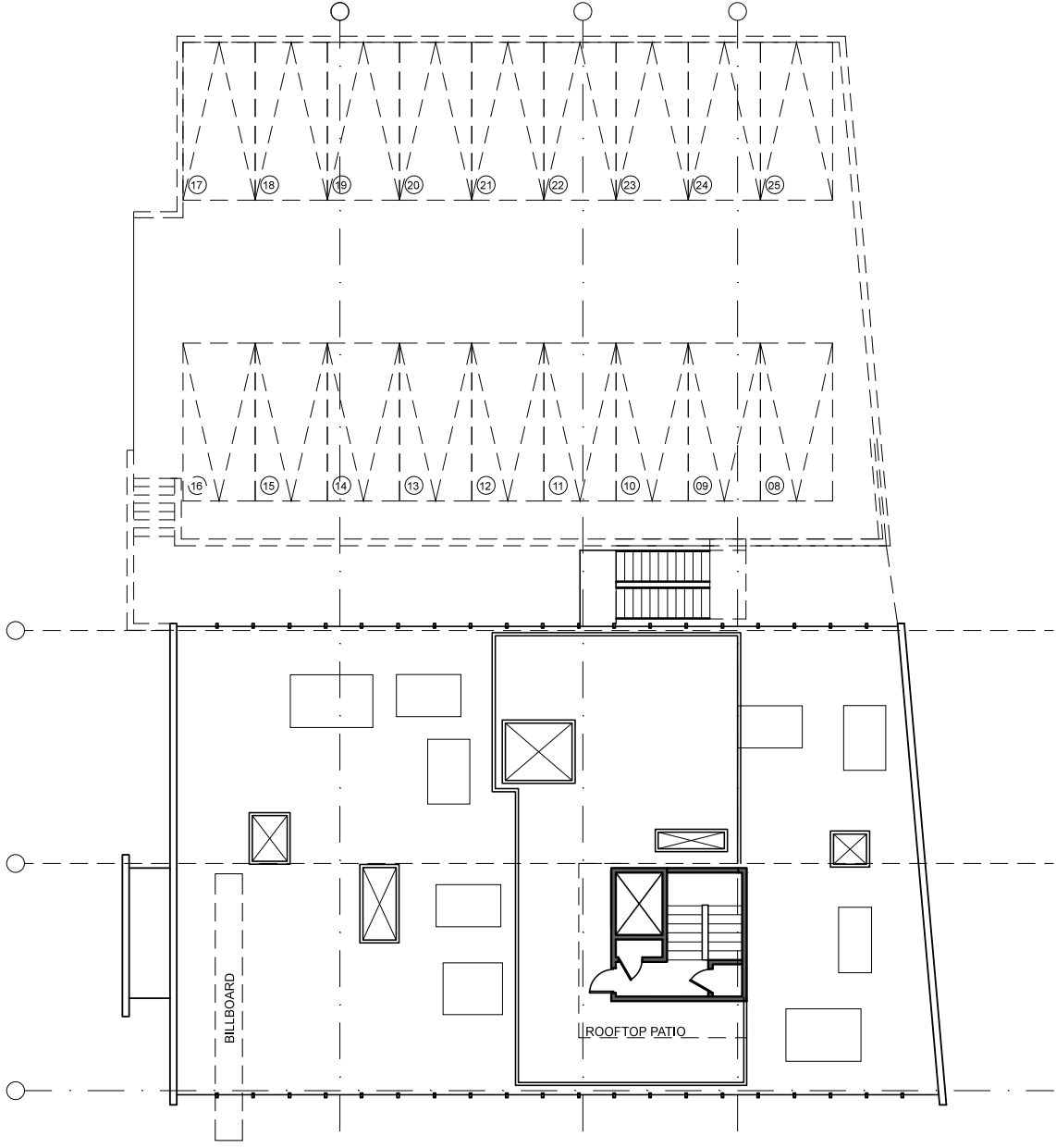
# PROPERTY PHOTOS



# ROOFTOP VIEW



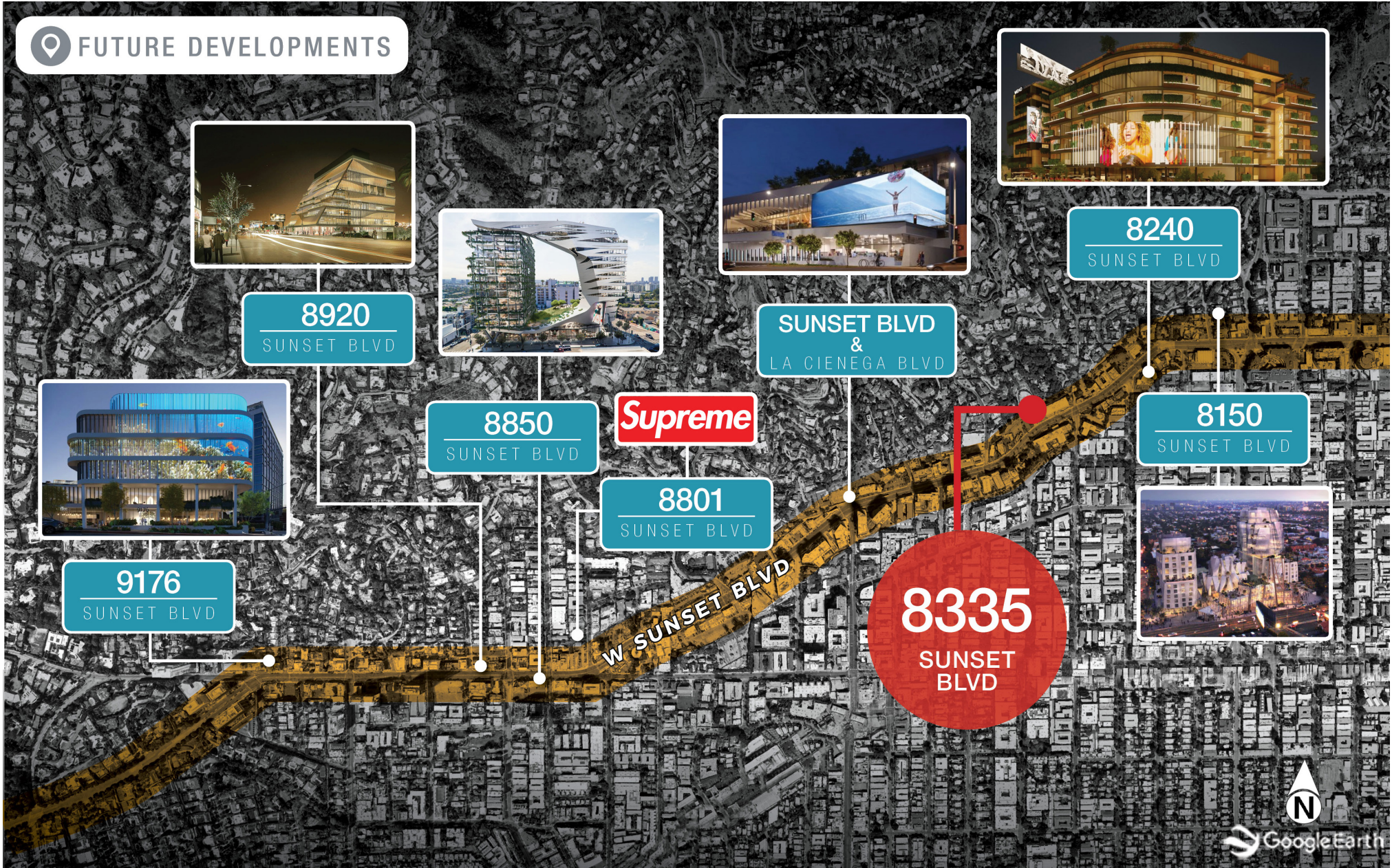
# FLOOR PLAN



# AMENITIES MAP



# FUTURE DEVELOPMENTS



No warranty, express or implied, is made as to the accuracy of the information contained herein. This information is submitted subject to errors, omissions, change of price, rental or other conditions, withdrawal without notice, and is subject to any special listing conditions imposed by our principals. Cooperating brokers, buyers, tenants and other parties who receive this document should not rely on it, but should use it as a starting point of analysis, and should independently confirm the accuracy of the information contained herein through a due diligence review of the books, records, files and documents that constitute reliable sources of the information described herein. NAI Capital CA DRE #02130474