

8055 BEVERLY BLVD., LOS ANGELES 90048



JARED SWEDELSON

Vice President
d: 818-742-1632
m: 818-644-7597
jswedelson@naicapital.com
Cal DRE Lic #02105146

NAI CAPITAL - WEST LOS ANGELES

11835 W. Olympic Blvd., Suite 700E
Los Angeles, CA 90064
d: 310-806-6100
f: 310-806-6101
www.naicapital.com

NAI Capital
COMMERCIAL REAL ESTATE SERVICES, WORLDWIDE

Building Details



Availabilities

Unit:	8055 Beverly	Unit:	305 N Laurel	Unit:	307 N Laurel
SF:	1,350 SF	SF:	1,240 SF	SF:	911 SF
Price:	\$4.25/SF NNN	Price:	\$3.50/SF NNN	Price:	\$3.50/SF NNN
Description:	An extremely charming space on Beverly Blvd with large double sided shopping windows, 18 ft tall ceilings, concrete floors, exposed brick and mezzanine space.	Description:	A blank canvas with double sided shopping windows, tall ceilings and mezzanine space.	Description:	Open space with tall ceilings, hard wood floors, operable windows, exposed brick, mezzanine space, private restroom and storage closet.

Unit 8055

STRS+MDLS

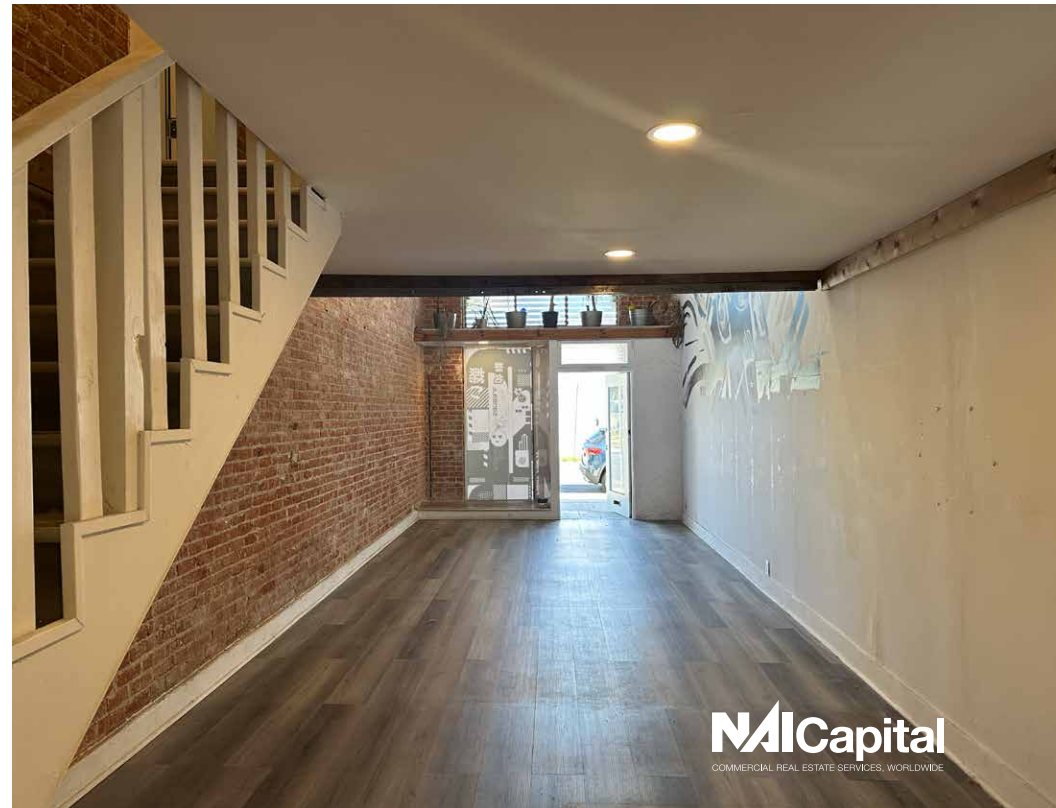
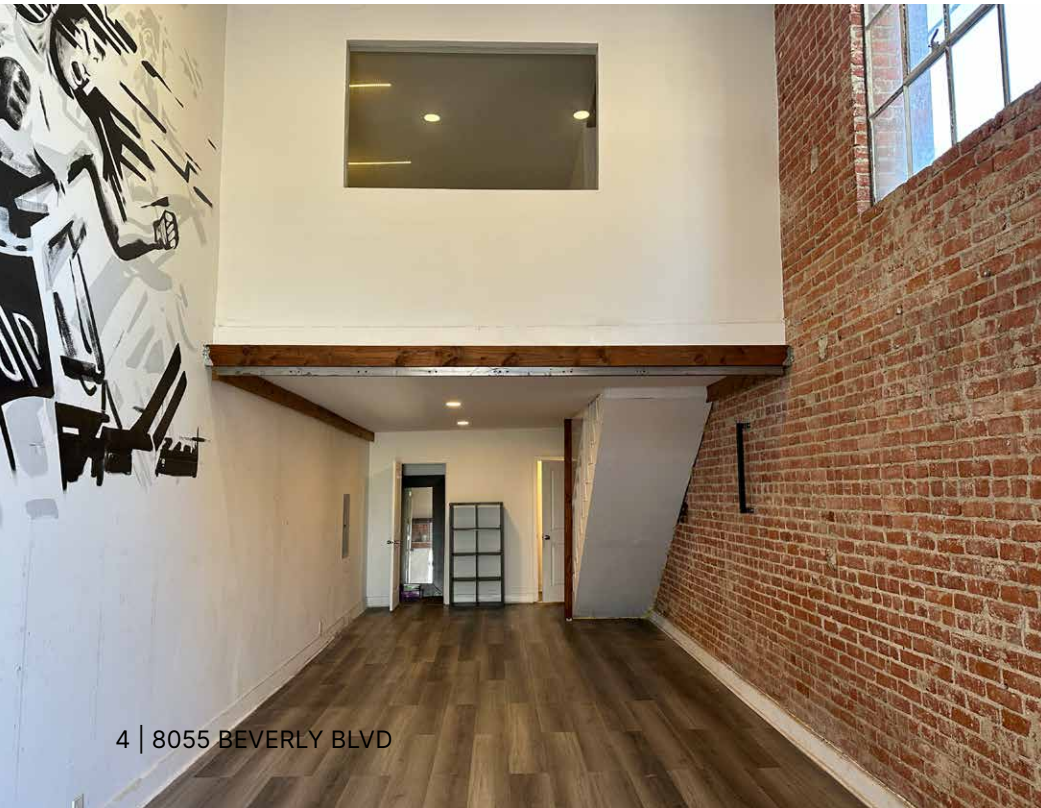


3 | 8055 BEVERLY BLVD

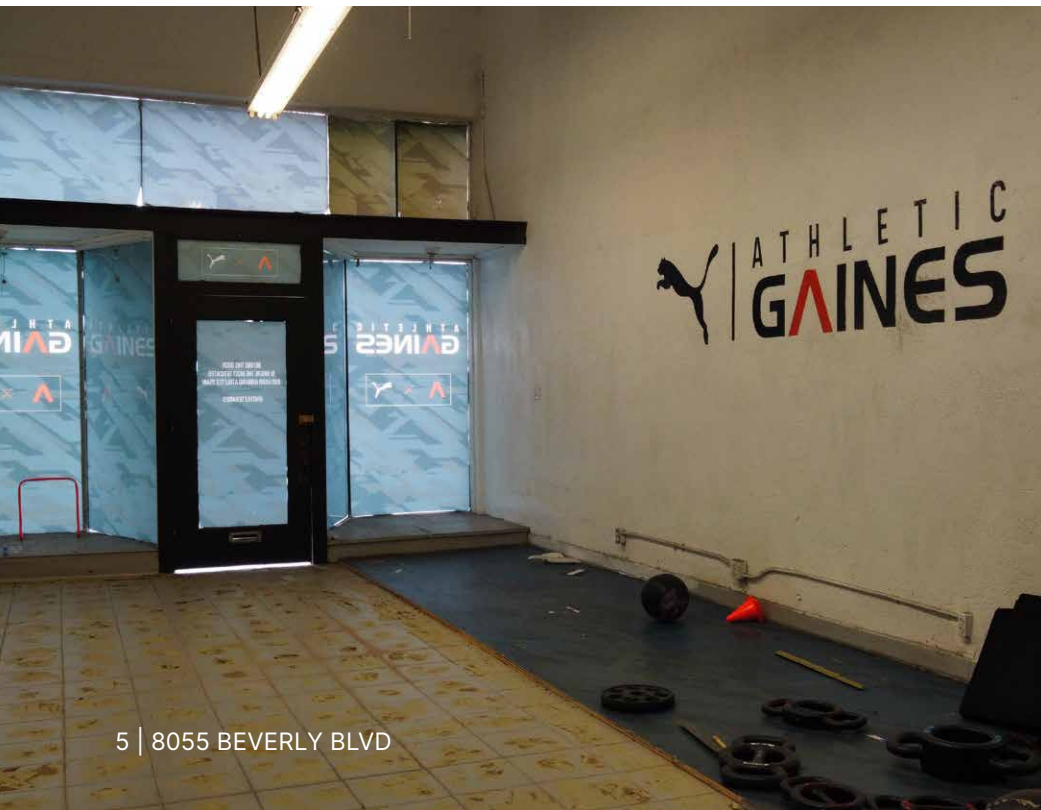


NAICapital
COMMERCIAL REAL ESTATE SERVICES, WORLDWIDE

Unit 307



Unit 305



Retail Map



Contact Info

JARED SWEDELSON

Vice President
d: 818-742-1632
m: 818-644-7597
jswedelson@naicapital.com
Cal DRE Lic #02105146

NAI CAPITAL - WEST LOS ANGELES

11835 W. Olympic Blvd., Suite 700E
Los Angeles, CA 90064
d: 310-806-6100
f: 310-806-6101
www.naicapital.com



No warranty, express or implied, is made as to the accuracy of the information contained herein. This information is submitted subject to errors, omissions, change of price, rental or other conditions, withdrawal without notice, and is subject to any special listing conditions imposed by our principals. Cooperating brokers, buyers, tenants and other parties who receive this document should not rely on it, but should use it as a starting point of analysis, and should independently confirm the accuracy of the information contained herein through a due diligence review of the books, records, files and documents that constitute reliable sources of the information described herein. NAI Capital Cal DRE #02130474

NAI Capital
COMMERCIAL REAL ESTATE SERVICES, WORLDWIDE