

7506 SANTA MONICA BLVD., WEST HOLLYWOOD, CA



JARED SWEDELSON

Vice President
d: 818-742-1632
m: 818-644-7597
jswedelson@naicapital.com
Cal DRE Lic #02105146

NAI CAPITAL - WEST LOS ANGELES

11550 Santa Monica Blvd., Suite 1550
Los Angeles, CA 90025
d: 310-806-6100
f: 310-806-6101
www.naicapital.com

NAICapital

COMMERCIAL REAL ESTATE SERVICES, WORLDWIDE



Price:

~~\$2,250,000~~ **\$2,000,000**

Building Square Feet:

2,875

Land Square Feet:

3,115

2 | 7506 SANTA MONICA BLVD

Seller Financing:

Negotiable

Zoning:

CC1

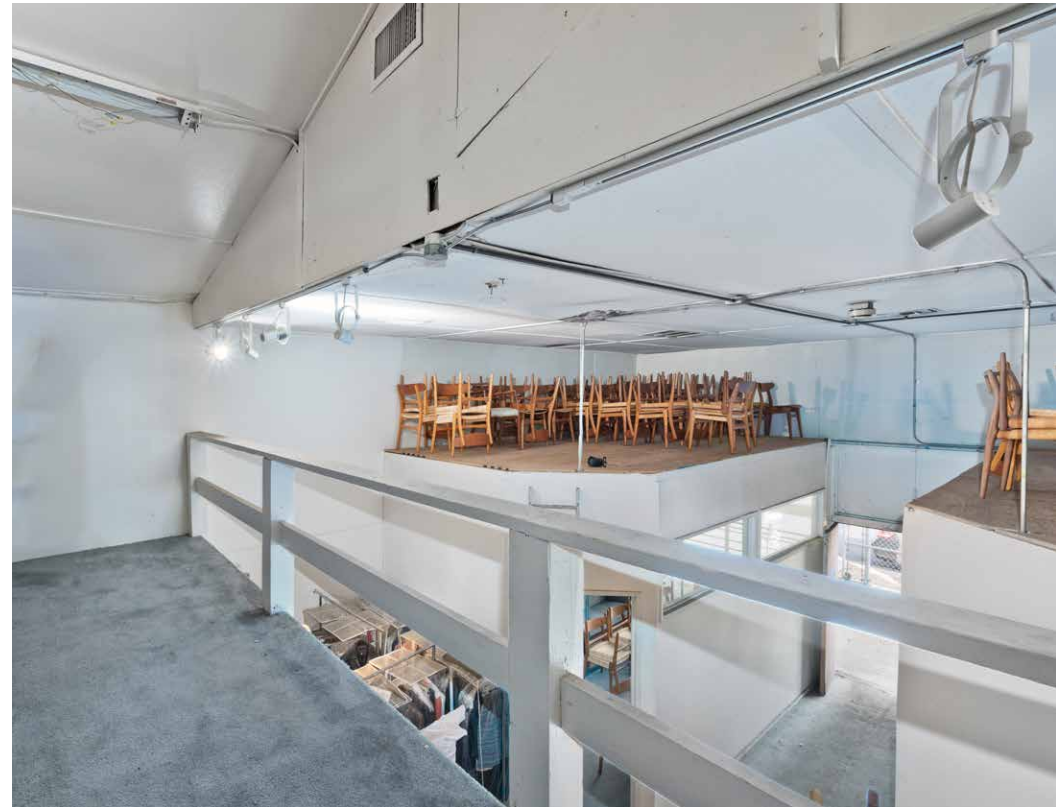
Year Built:

1932

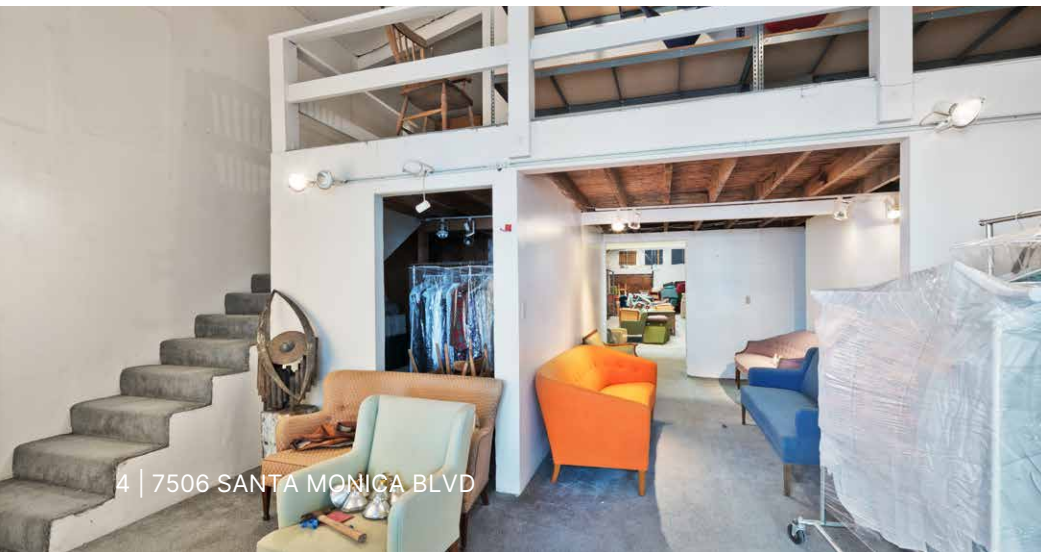
Building Specs:

- 14- 17 ft high vaulted ceilings
- 400 AMPS
- Skylights
- Dock High Door with alley access
- Front patio

Property Photos



Property Photos



Demographics

West Hollywood Demographics

	1 Mile	3 Miles	5 Miles
Population	50,363	277,094	820,348
Households	31,525	148,722	378,212
Avg. Household Income	\$135,815	\$151,509	\$136,273
Businesses	4,539	34,720	69,447

SANTA MONICA BLVD - 42,200 CDP

Retail Map



WEST HOLLYWOOD

7506
SANTA MONICA
BLVD



Parking

WEST HOLLYWOOD

**PLUMMER PARK
PARKING LOT
(CITY OWNED)**
3 MINUTES WALK
FROM SITE

**SPAULDING
PARKING LOT**
3 MINUTES WALK
FROM SITE

7506
SANTA MONICA
BLVD

RESIDENTIAL STREET
PARKING AVAILABLE

SANTA MONICA BLVD

2

N SPAULDING AVE

N STANLEY AVE

N CURSON AVE

N SIERRA BONITA AVE

GARDNER ST

N VISTA ST

Contact Info

JARED SWEDELSON

Vice President
d: 818-742-1632
m: 818-644-7597
jswedelson@naicapital.com
Cal DRE Lic #02105146

NAI CAPITAL - WEST LOS ANGELES

11550 Santa Monica Blvd., Suite 1550
Los Angeles, CA 90025
d: 310-806-6100
f: 310-806-6101
www.naicapital.com

No warranty, express or implied, is made as to the accuracy of the information contained herein. This information is submitted subject to errors, omissions, change of price, rental or other conditions, withdrawal without notice, and is subject to any special listing conditions imposed by our principals. Cooperating brokers, buyers, tenants and other parties who receive this document should not rely on it, but should use it as a starting point of analysis, and should independently confirm the accuracy of the information contained herein through a due diligence review of the books, records, files and documents that constitute reliable sources of the information described herein. NAI Capital Cal DRE #02130474

NAI Capital
COMMERCIAL REAL ESTATE SERVICES, WORLDWIDE