

# 7404 SUNSET BLVD LOS ANGELES, 90046

STAND-ALONE BUILDING FOR LEASE ON SUNSET



**FOR LEASE**  
**JARED SWEDELSON**  
**310-461-8941**  
[www.jaredsw.com](http://www.jaredsw.com)

**DOCK EAST**

**Sam Ash**  
MUSIC | STORES



**JARED SWEDELSON**  
Vice President  
d: 818 742 1632  
m: 818 644 7597  
jswedelson@naicapital.com  
Cal DRE Lic #02105146

**NAI CAPITAL - WEST LOS ANGELES**  
11835 W. Olympic Blvd., Suite 700E  
Los Angeles, CA 90064  
d: 310 806 6100  
f: 310 806 6101  
www.naicapital.com



# Building Details



## Lease Rate:

\$3.25 SF NNN

## Available SF:

2,516 SF

## Parking:

9 spaces

## Zoning:

C4

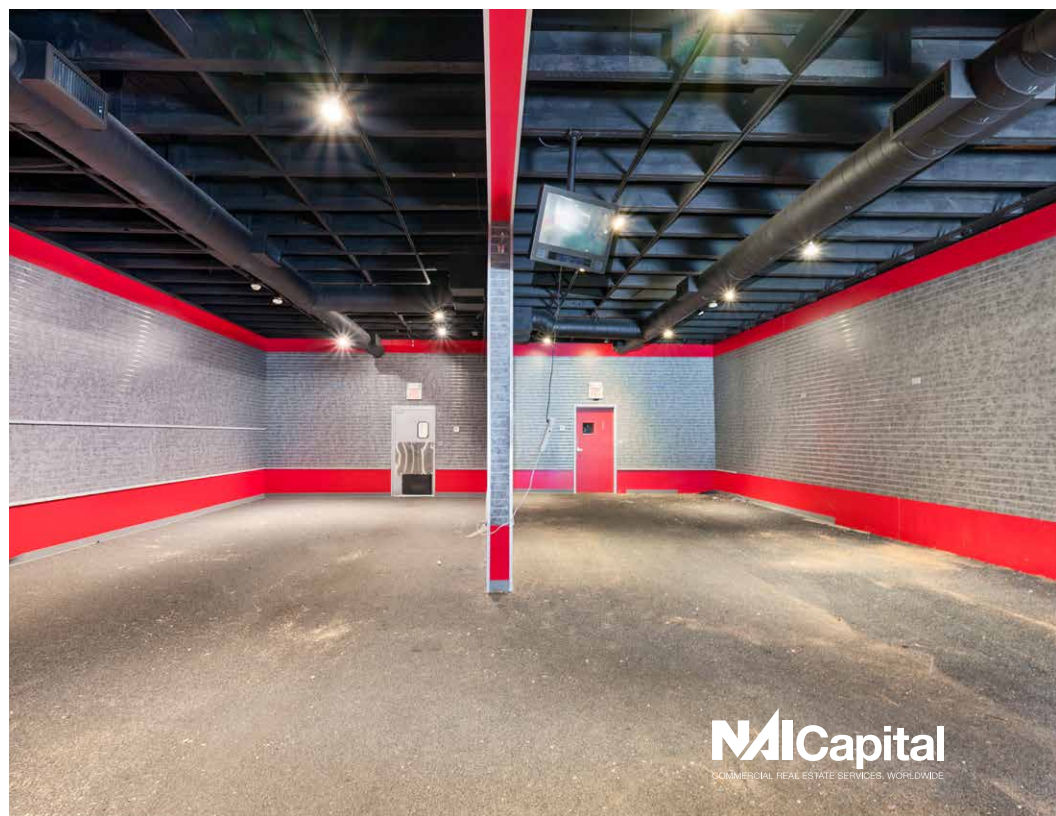
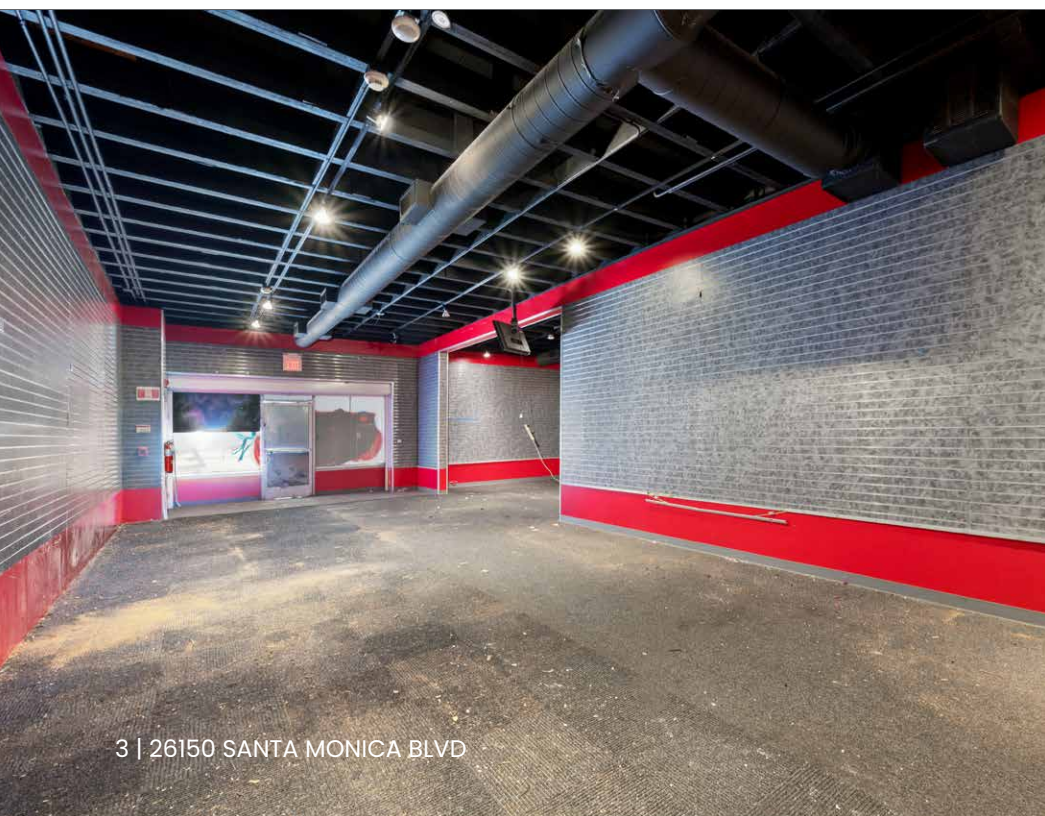
## Property Description

2,516 SF free standing retail building on prime Sunset Boulevard. 9 dedicated parking spaces available in the rear of the building free of charge. 12ft high ceilings with an open layout with the ability for a tenant to customize the space to their needs. Flexible lease terms and building positioning allow this space to be utilized for numerous uses.

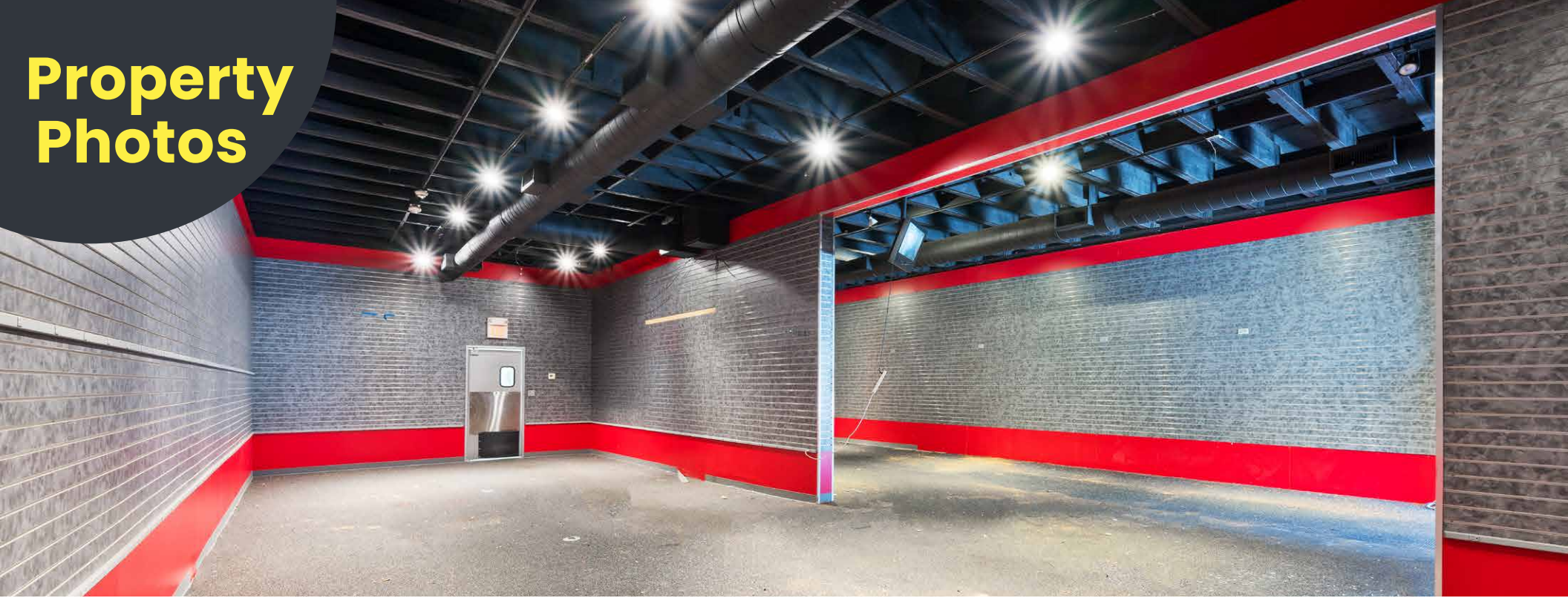
## Key Highlights:

- Sunset Blvd Frontage
- Freestanding building
- Landlord willing to give free rent to long term tenant willing to improve the space

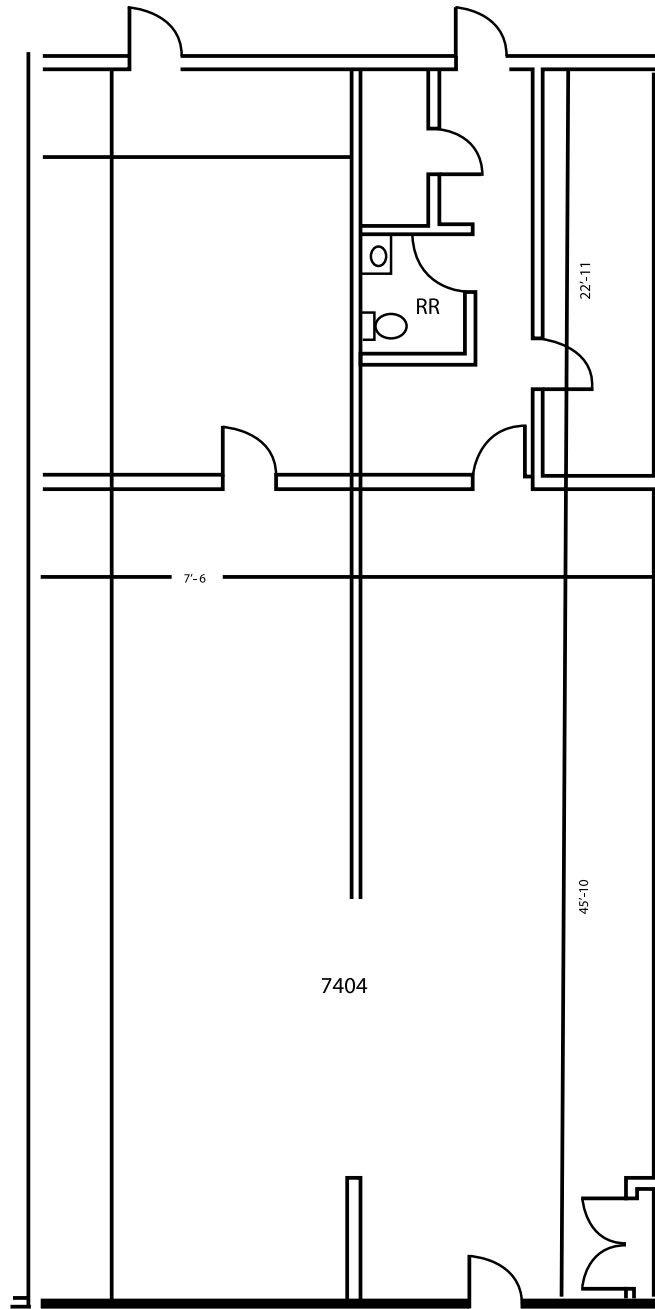
# Property Photos



# Property Photos



# Floor Plan



7404

7404 2516 SQFT

# Retail Map

## WEST HOLLYWOOD



# Contact Info

## JARED SWEDELSON

Vice President  
d: 818 742 1632  
m: 818 644 7597  
jswedelson@naicapital.com  
Cal DRE Lic #02105146

## NAI CAPITAL - WEST LOS ANGELES

11835 W. Olympic Blvd., Suite 700E  
Los Angeles, CA 90064  
d: 310 806 6100  
f: 310 806 6101  
www.naicapital.com



No warranty, express or implied, is made as to the accuracy of the information contained herein. This information is submitted subject to errors, omissions, change of price, rental or other conditions, withdrawal without notice, and is subject to any special listing conditions imposed by our principals. Cooperating brokers, buyers, tenants and other parties who receive this document should not rely on it, but should use it as a starting point of analysis, and should independently confirm the accuracy of the information contained herein through a due diligence review of the books, records, files and documents that constitute reliable sources of the information described herein. NAI Capital Cal DRE #02130474