

# 6920 MELROSE AVENUE

FOR LEASE - MID-CENTURY MODERN, CREATIVE OFFICE SPACE



**JARED SWEDELSON**

Vice President  
d: 818-742-1632  
m: 818-644-7597  
jswedelson@naicapital.com  
Cal DRE Lic #02105146

**NAI CAPITAL - WEST LOS ANGELES**

11835 W. Olympic Blvd., Suite 700E  
Los Angeles, CA 90064  
d: 310-806-6100  
f: 310-806-6101  
www.naicapital.com



COMMERCIAL REAL ESTATE SERVICES, WORLDWIDE

# Building Details



## Lease Rate:

\$3.95/SF NNN

## Available SF:

3,428 SF

## Parking:

4 spaces

## Property Description:

An extraordinary mid-century modern creative office with a private roof deck unlike any other in Hollywood. 6920 Melrose Avenue offers a completely custom pre-built creative space, in which each polished detail has been carefully curated by the owner (an architect) with excessive attention to details. To achieve such an elevating work environment the owner sourced some of the highest quality materials, finishes and fixtures on the market. Interiors designed by IDGroup.

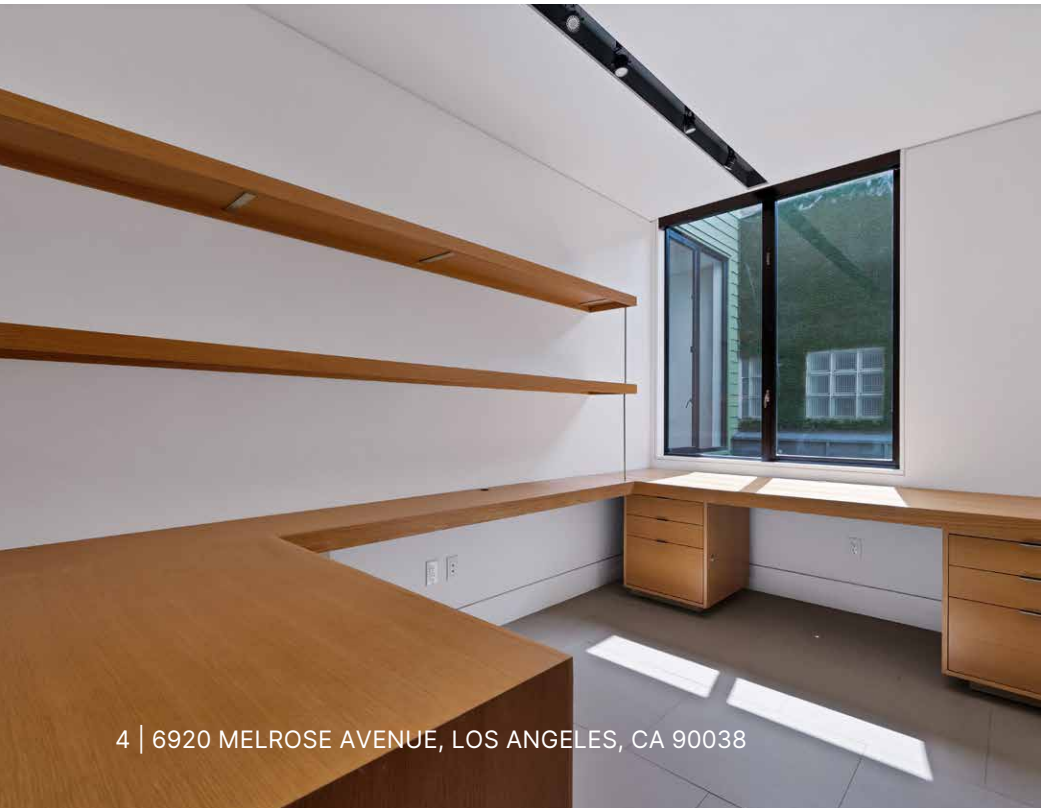
## Space Features:

- Well-lit, modern space with skylights, and tons of natural light
- Private roof deck
- 2 executive offices, 9 private offices, 1 conference room, 4 restrooms and server room

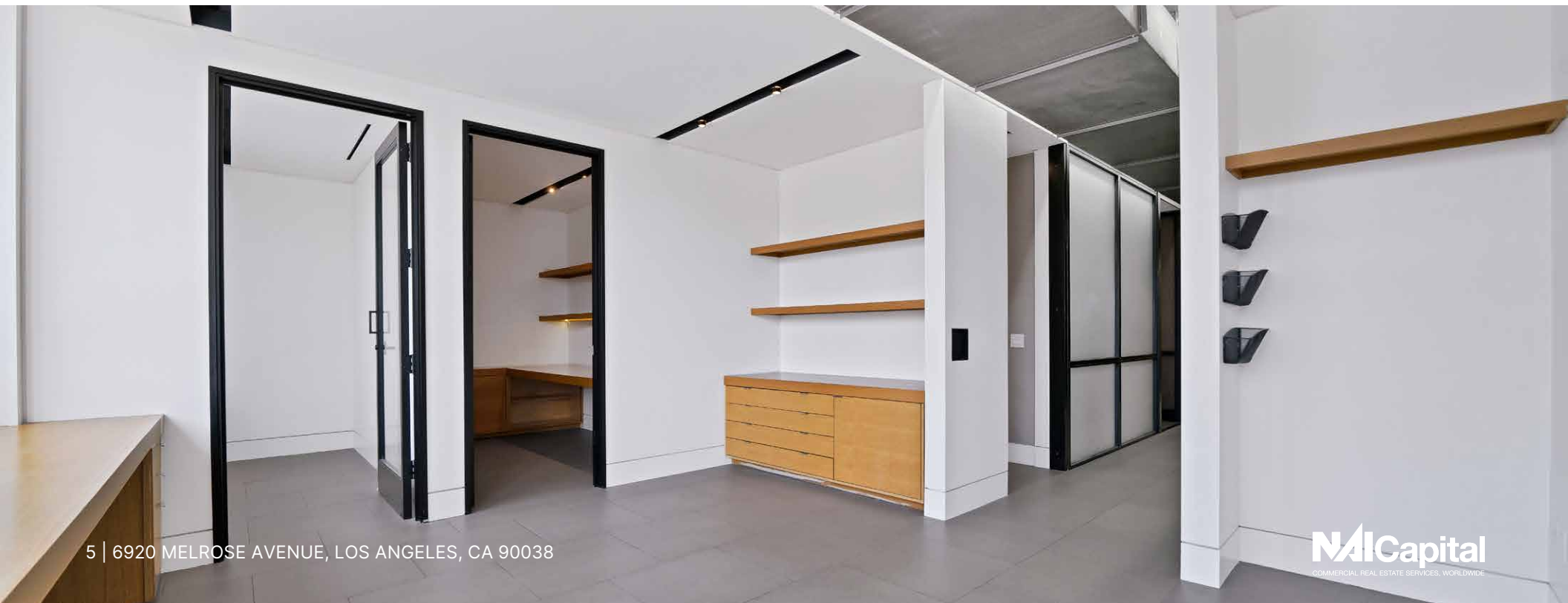
# Property Photos



# Property Photos



# Property Photos



# Outdoor Deck

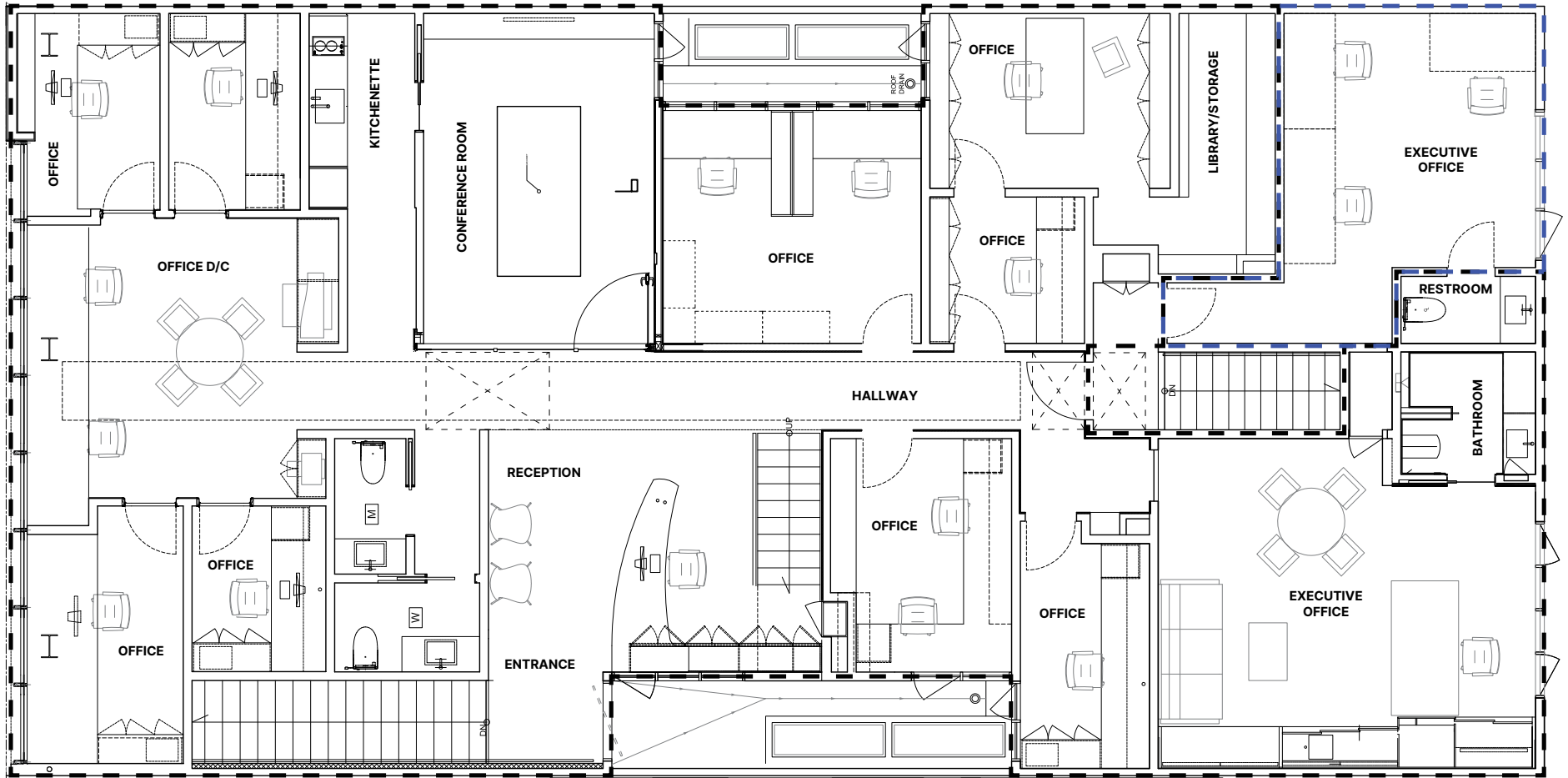


6 | 6920 MELROSE AVENUE, LOS ANGELES, CA 90038



**NAI Capital**  
COMMERCIAL REAL ESTATE SERVICES, WORLDWIDE

# Floor Plan



- - 2,711 SQ.FT  
 - - 239 SQ.F  
**TOTAL SQUARE  
 FOOTAGE: 2,950 SQ.F**

# Retail Map



# Contact Info

## JARED SWEDELSON

Vice President  
d: 818-742-1632  
m: 818-644-7597  
jswedelson@naicapital.com  
Cal DRE Lic #02105146

## NAI CAPITAL - WEST LOS ANGELES

11835 W. Olympic Blvd., Suite 700E  
Los Angeles, CA 90064  
d: 310-806-6100  
f: 310-806-6101  
www.naicapital.com

No warranty, express or implied, is made as to the accuracy of the information contained herein. This information is submitted subject to errors, omissions, change of price, rental or other conditions, withdrawal without notice, and is subject to any special listing conditions imposed by our principals. Cooperating brokers, buyers, tenants and other parties who receive this document should not rely on it, but should use it as a starting point of analysis, and should independently confirm the accuracy of the information contained herein through a due diligence review of the books, records, files and documents that constitute reliable sources of the information described herein. NAI Capital Cal DRE #02130474

