



**FOR LEASE - CREATIVE OFFICE SPACE**  
**6920 MELROSE AVE., LOS ANGELES, CA 90038**



**Jared Swedelson**

Senior Associate  
d: 818-742-1632 | m: 818-644-7597  
jswedelson@naicapital.com  
Cal DRE Lic #02105146

## Creative Office Space For Lease

**Lease Rate:** \$4.50/SF NNN

**Suite SF:** 3,478 SF

### Property Highlights

- Well-lit, modern space with skylights, and tons of natural light
- Private roof deck
- 2 executive offices, 9 standard offices, 1 conference room, 4 restrooms and server room.

### Property Description

A unique stand-alone creative office building with striking interior architecture and private roof deck. Located in the heart of the Hollywood Sycamore District walking distance to famous art galleries, showrooms and some of the best restaurants in Los Angeles. Interiors designed by IDGroup.



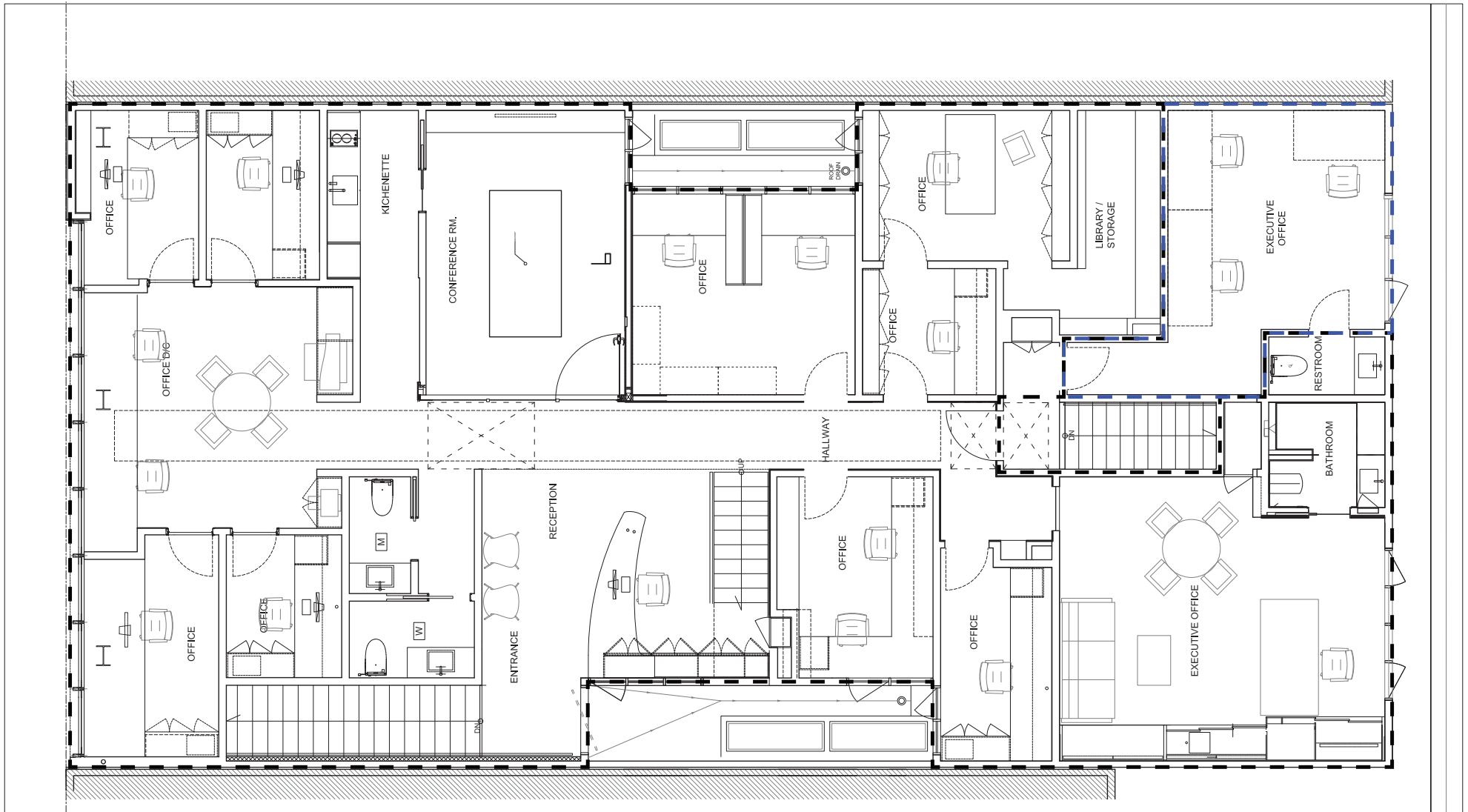




# EXCLUSIVE OUTDOOR DECK



# FLOOR PLAN



# AMENITIES MAP





COMMERCIAL REAL ESTATE SERVICES, WORLDWIDE

## CONTACT INFORMATION

**Jared Swedelson**

Senior Associate

818.644.7597

[jswedelson@naicapital.com](mailto:jswedelson@naicapital.com)

Cal DRE Lic #02105146

**NAI Capital Commercial**

15821 Ventura Blvd., Suite 320

Encino, CA 91436

818.905.2400

[www.naicapital.com](http://www.naicapital.com)

No warranty, express or implied, is made as to the accuracy of the information contained herein. This information is submitted subject to errors, omissions, change of price, rental or other conditions, withdrawal without notice, and is subject to any special listing conditions imposed by our principals. Cooperating brokers, buyers, tenants and other parties who receive this document should not rely on it, but should use it as a starting point of analysis, and should independently confirm the accuracy of the information contained herein through a due diligence review of the books, records, files and documents that constitute reliable sources of the information described herein. NAI Capital Cal DRE #02130474