



FOR LEASE - CREATIVE OFFICE SPACE
6920 MELROSE AVE., LOS ANGELES, CA 90038



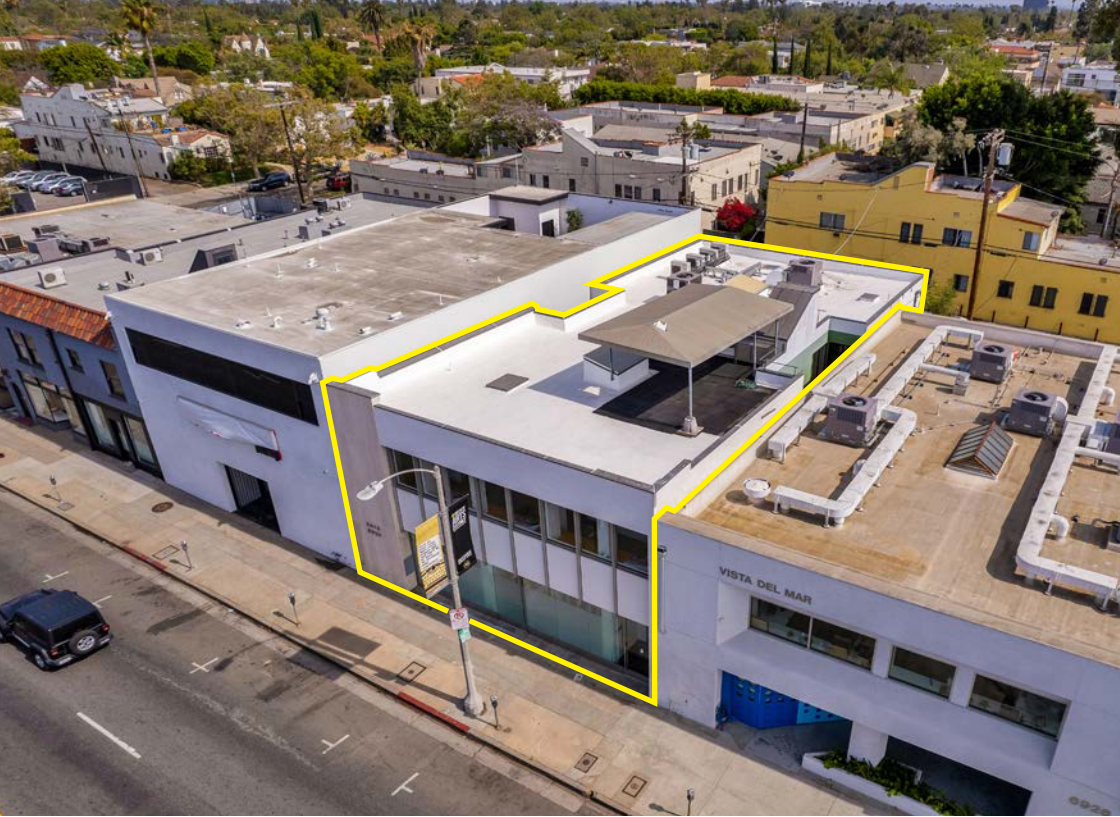
Jared Swedelson

Vice President

d: 818-742-1632 | m: 818-644-7597

jswedelson@naicapital.com

Cal DRE Lic #02105146



Creative Office Space For Lease

Lease Rate: \$3.95/SF NNN

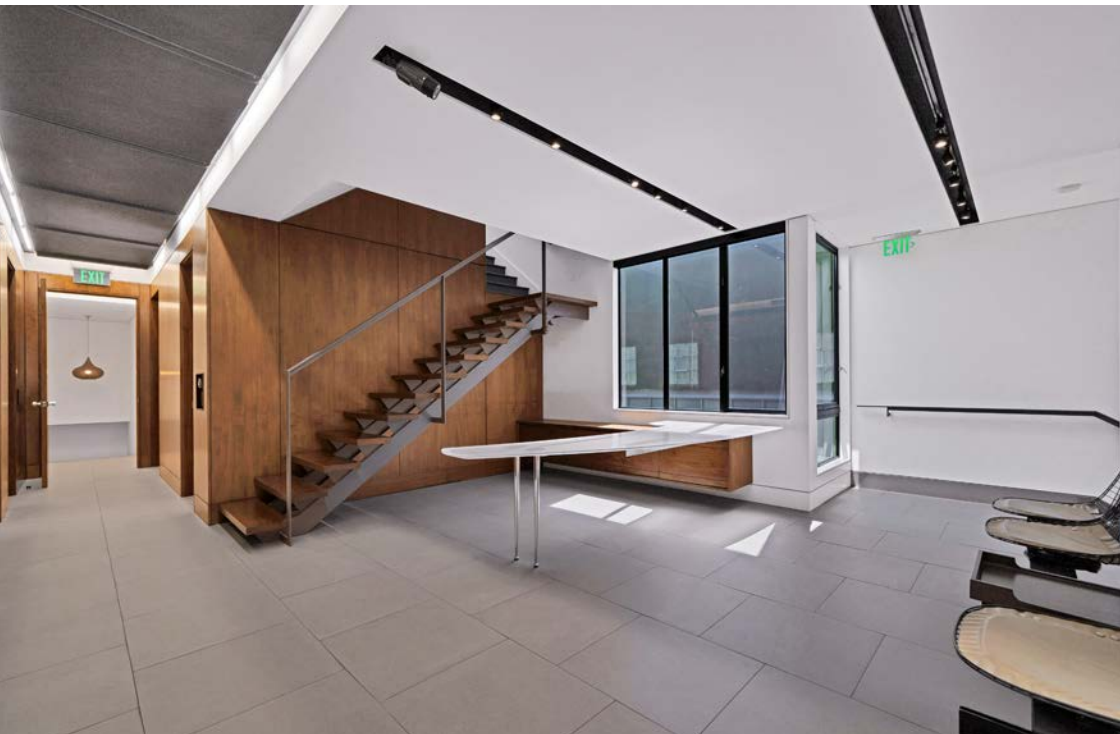
Suite SF: 3,428 SF

Property Highlights

- Well-lit, modern space with skylights, and tons of natural light
- Private roof deck
- 2 executive offices, 9 staff offices, 1 conference room, 4 restrooms and server room.

Property Description

An extraordinary mid-century modern creative office with a private roof deck unlike any other in Hollywood. 6920 Melrose Avenue offers a completely custom pre-built creative space, in which each polished detail has been carefully curated by the owner (an architect) with excessive attention to details. To achieve such an elevating work environment the owner sourced some of the highest quality materials, finishes and fixtures on the market. *Interiors designed by IDGroup.*



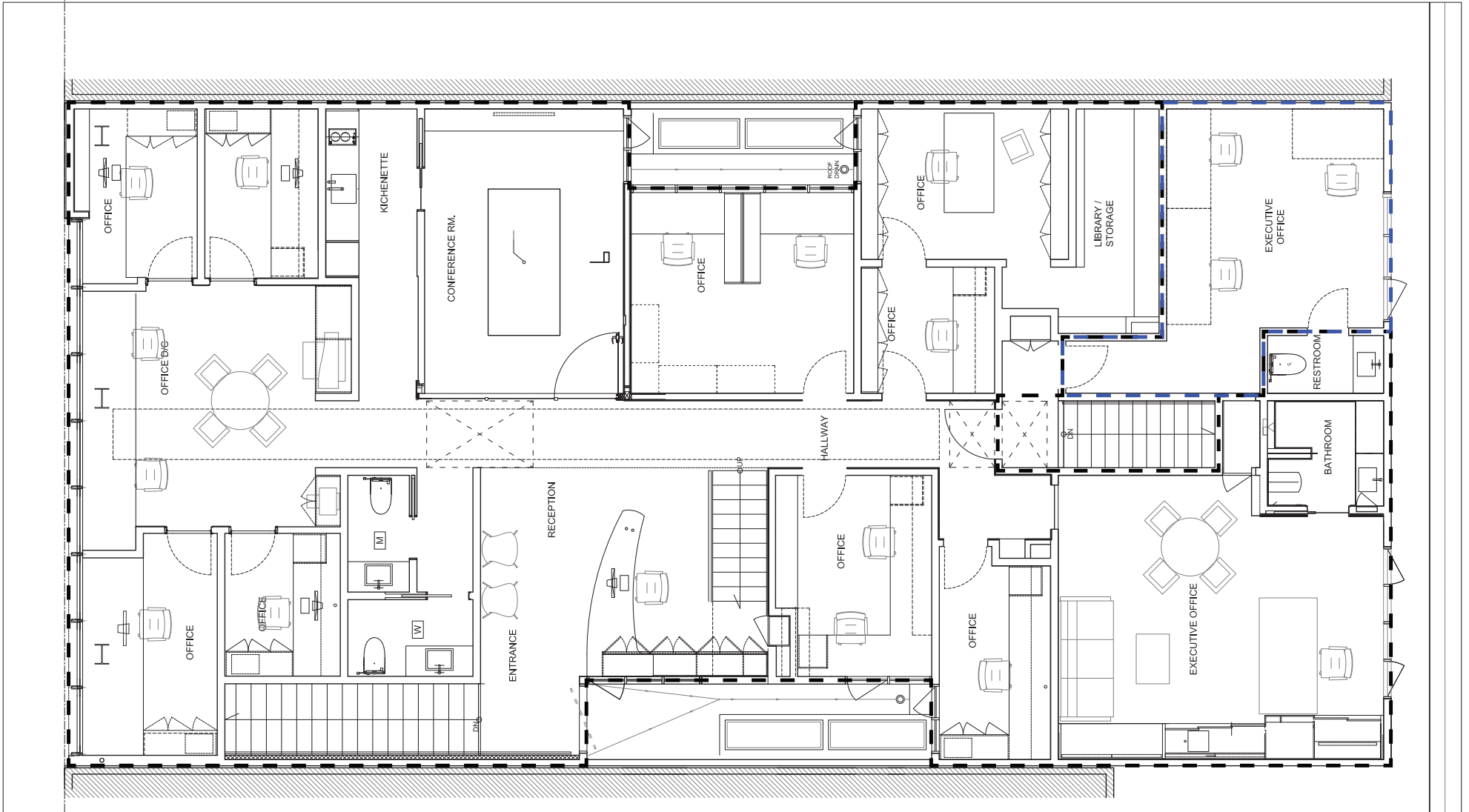




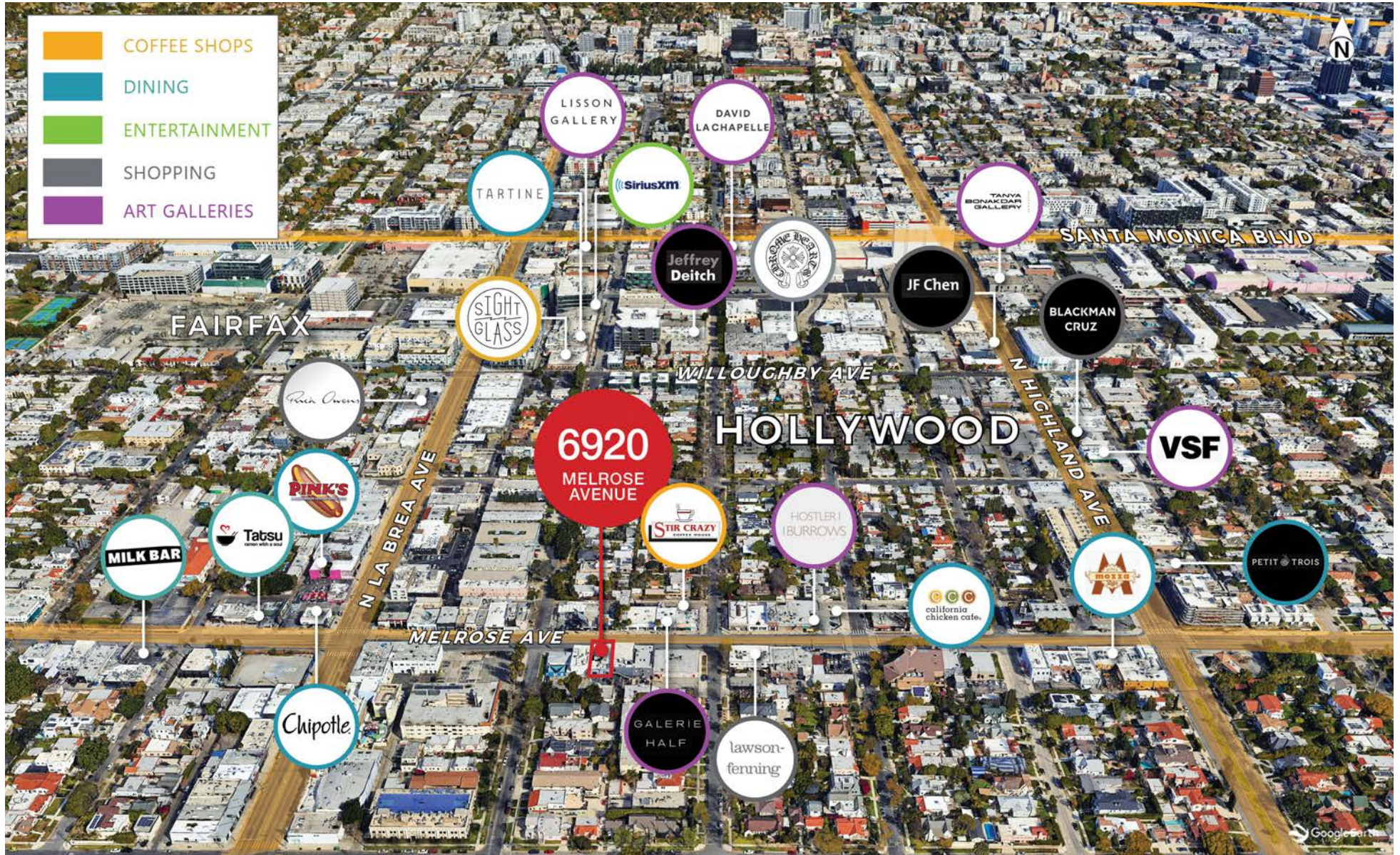
EXCLUSIVE OUTDOOR DECK



FLOOR PLAN



AMENITIES MAP





COMMERCIAL REAL ESTATE SERVICES, WORLDWIDE

CONTACT INFORMATION

Jared Swedelson

Vice President

818.644.7597

jswedelson@naicapital.com

Cal DRE Lic #02105146

NAI Capital Commercial

15821 Ventura Blvd., Suite 320

Encino, CA 91436

818.905.2400

www.naicapital.com

No warranty, express or implied, is made as to the accuracy of the information contained herein. This information is submitted subject to errors, omissions, change of price, rental or other conditions, withdrawal without notice, and is subject to any special listing conditions imposed by our principals. Cooperating brokers, buyers, tenants and other parties who receive this document should not rely on it, but should use it as a starting point of analysis, and should independently confirm the accuracy of the information contained herein through a due diligence review of the books, records, files and documents that constitute reliable sources of the information described herein. NAI Capital Cal DRE #02130474