

6535 SANTA MONICA BLVD. LOS ANGELES 90038

FOR LEASE - CREATIVE OFFICE / FLEX SPACE IN HOLLYWOOD



JARED SWEDELSON
Vice President
d: 818-742-1632
m: 818-644-7597
jswedelson@naicapital.com
Cal DRE Lic #02105146

NAI CAPITAL - WEST LOS ANGELES
11835 W. Olympic Blvd., Suite 700E
Los Angeles, CA 90064
d: 310-806-6100
f: 310-806-6101
www.naicapital.com

NAI Capital
COMMERCIAL REAL ESTATE SERVICES, WORLDWIDE

Building Details



Space Features H-West

Lease Rate:

\$2.75/SF NNN

Available Spaces:

Suite H-West:	2,500 SF
Suite H-East:	2,975 SF
Continuous Space:	5,475 SF

Parking:

1 per 1,000 SF

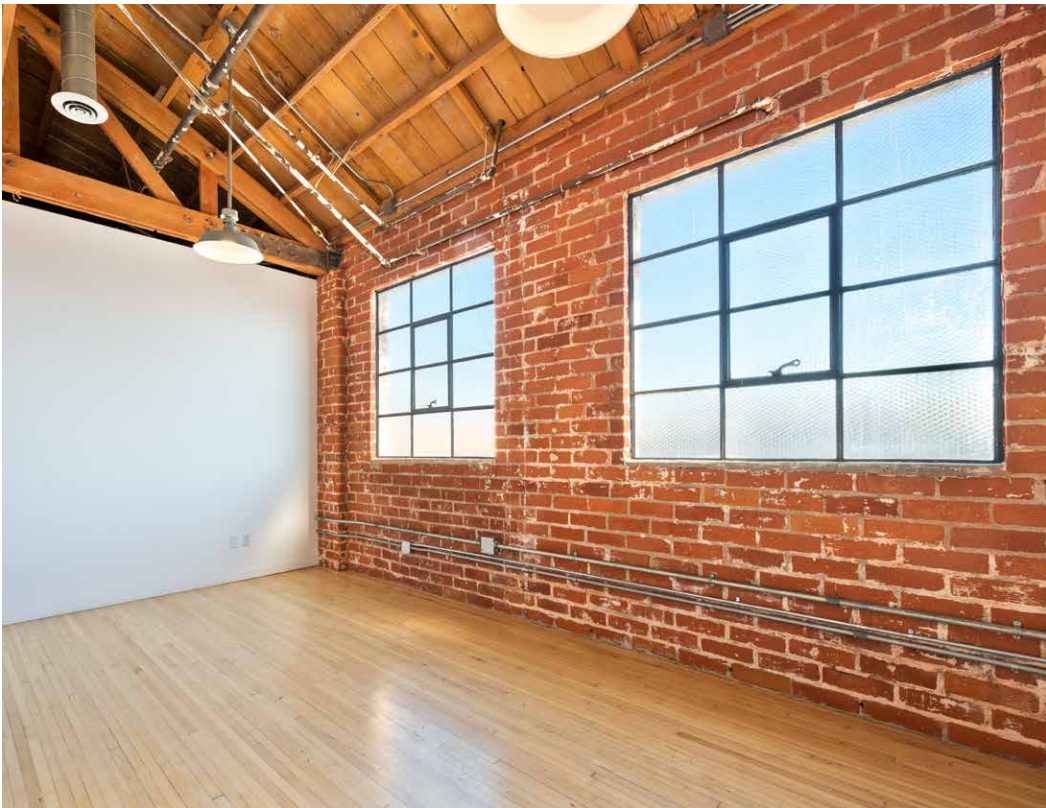
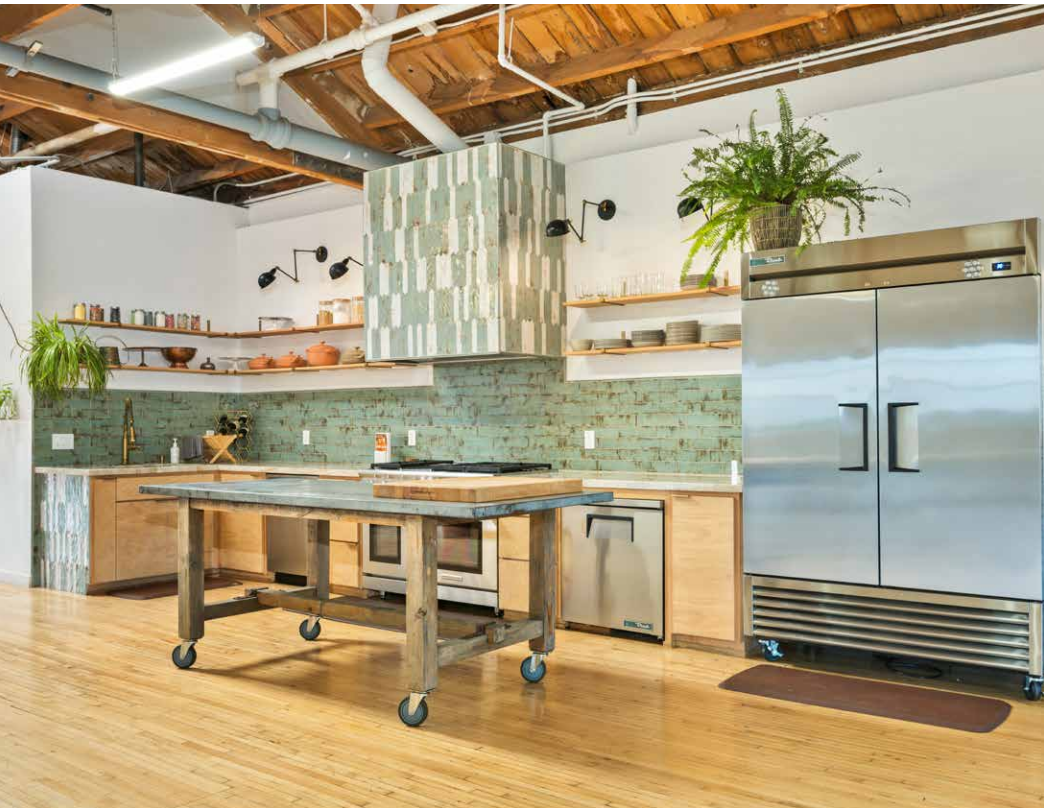
Space Features H-East:

- Open floor plan with 9 private offices
- Newly remodeled kitchen
- Interior bathroom
- Freight elevator access

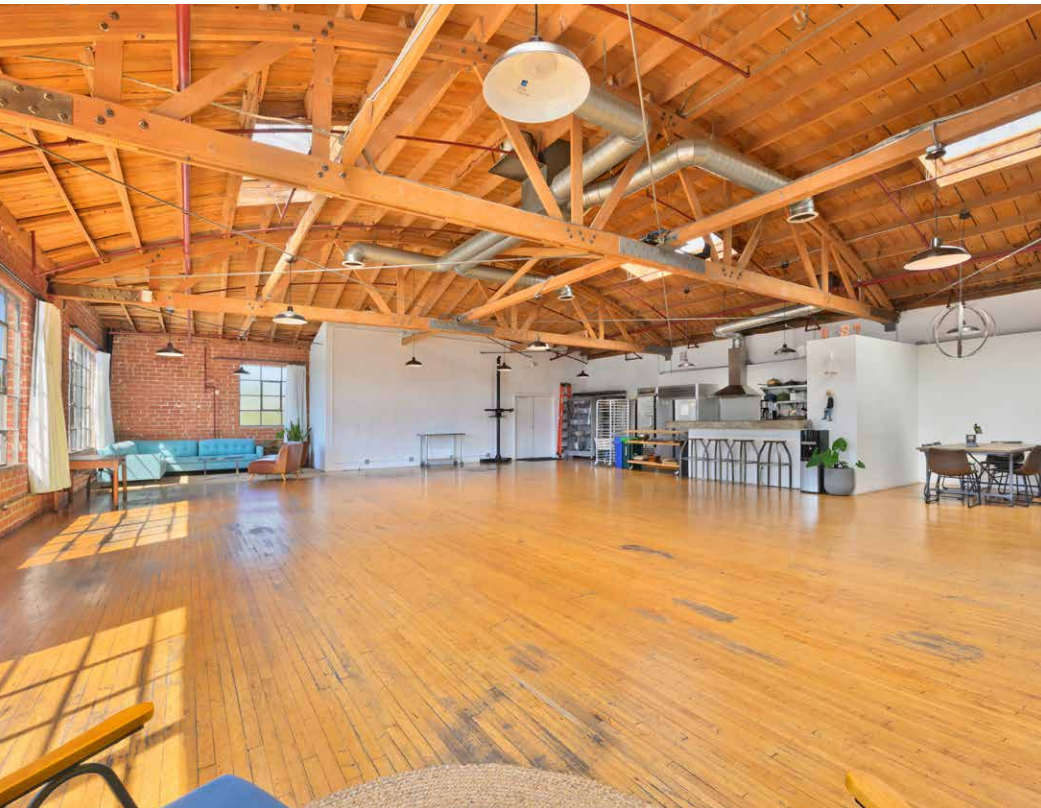
Space Features H-West:

- Wide open space
- Operable windows and skylights
- Kitchenette
- Private restrooms
- Freight elevator access

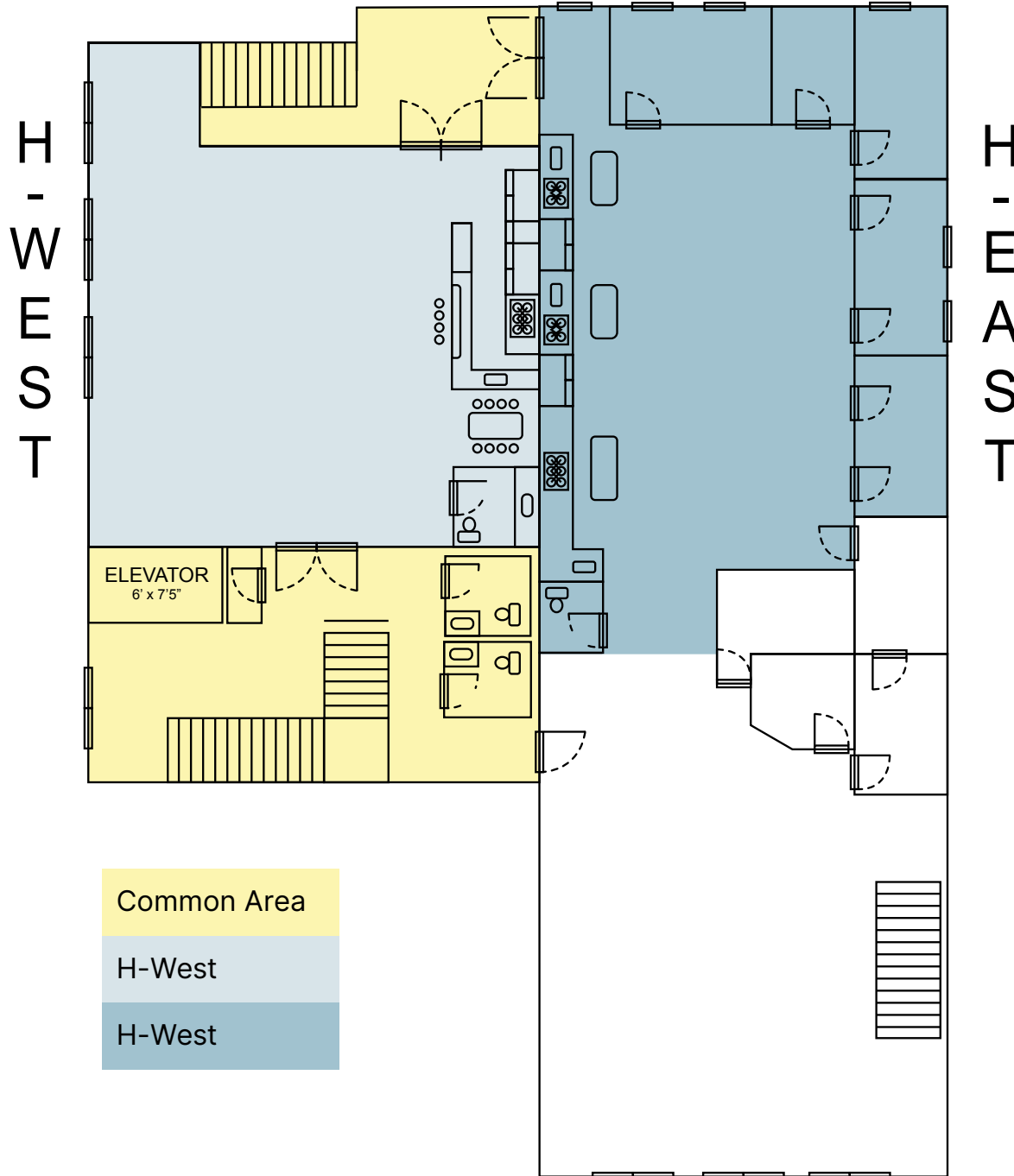
H-East Photos



H-West Photos



Floor Plan



Common Area

H-West

H-West

Retail Map



Contact Info

JARED SWEDELSON

Vice President
d: 818-742-1632
m: 818-644-7597
jswedelson@naicapital.com
Cal DRE Lic #02105146

NAI CAPITAL - WEST LOS ANGELES

11835 W. Olympic Blvd., Suite 700E
Los Angeles, CA 90064
d: 310-806-6100
f: 310-806-6101
www.naicapital.com



No warranty, express or implied, is made as to the accuracy of the information contained herein. This information is submitted subject to errors, omissions, change of price, rental or other conditions, withdrawal without notice, and is subject to any special listing conditions imposed by our principals. Cooperating brokers, buyers, tenants and other parties who receive this document should not rely on it, but should use it as a starting point of analysis, and should independently confirm the accuracy of the information contained herein through a due diligence review of the books, records, files and documents that constitute reliable sources of the information described herein. NAI Capital Cal DRE #02130474