

6165 SANTA MONICA BLVD. LOS ANGELES, CA



FOR LEASE – PREMIER BOW TRUSS CREATIVE OFFICE IN HOLLYWOOD



JARED SWEDELSON

Vice President
d: 818-742-1632
m: 818-644-7597
jswedelson@naicapital.com
Cal DRE Lic #02105146

NAI CAPITAL - WEST LOS ANGELES

11835 W. Olympic Blvd., Suite 700E
Los Angeles, CA 90064
d: 310-806-6100
f: 310-806-6101
www.naicapital.com

NAI Capital
COMMERCIAL REAL ESTATE SERVICES, WORLDWIDE

Building Details



Lease Rate:

\$2.85 NNN

NNN's:

\$.75

Available SF:

7,219 SF

Ceiling Height:

16-23'

Parking:

18

Building Details



Property Description:

Elevate your business with this exceptional turnkey office/flex space. Designed for versatility and efficiency, this fully built-out space combines modern aesthetics with striking vintage architectural features. Located in the Hollywood Studio district, this dynamic space is driving distance to major Hollywood Studios, iconic brands, and amazing restaurants.

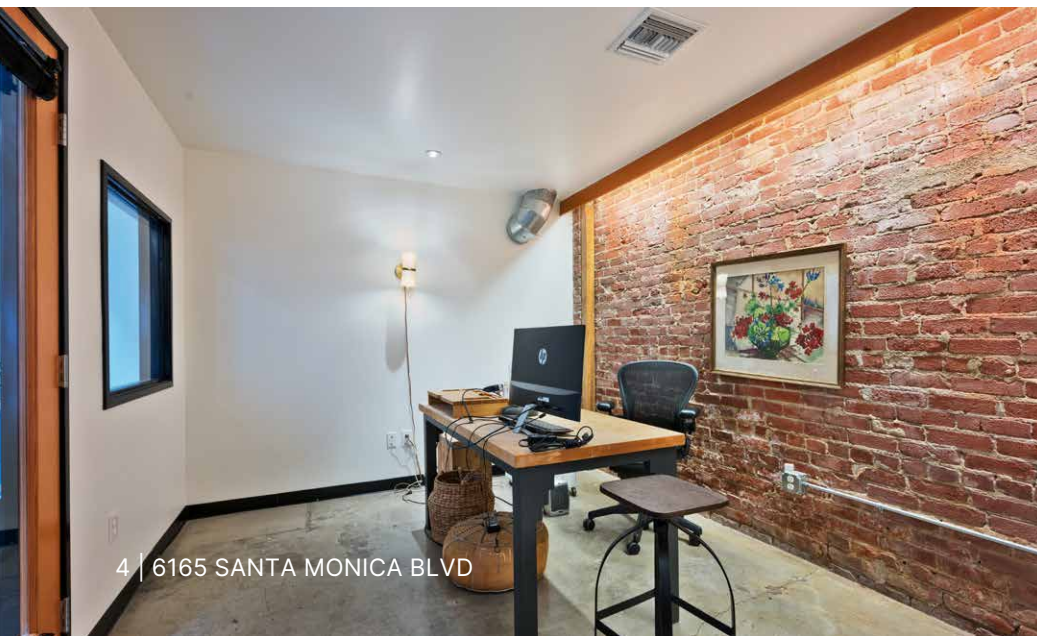
Space Features:

- Fully built out turnkey creative bow-truss space
- Ample natural light from large window line and skylights
- Bow truss ceilings with 16-23ft high ceilings
- Roll up door in rear of building with alley access
- Exposed brick walls

1st Floor



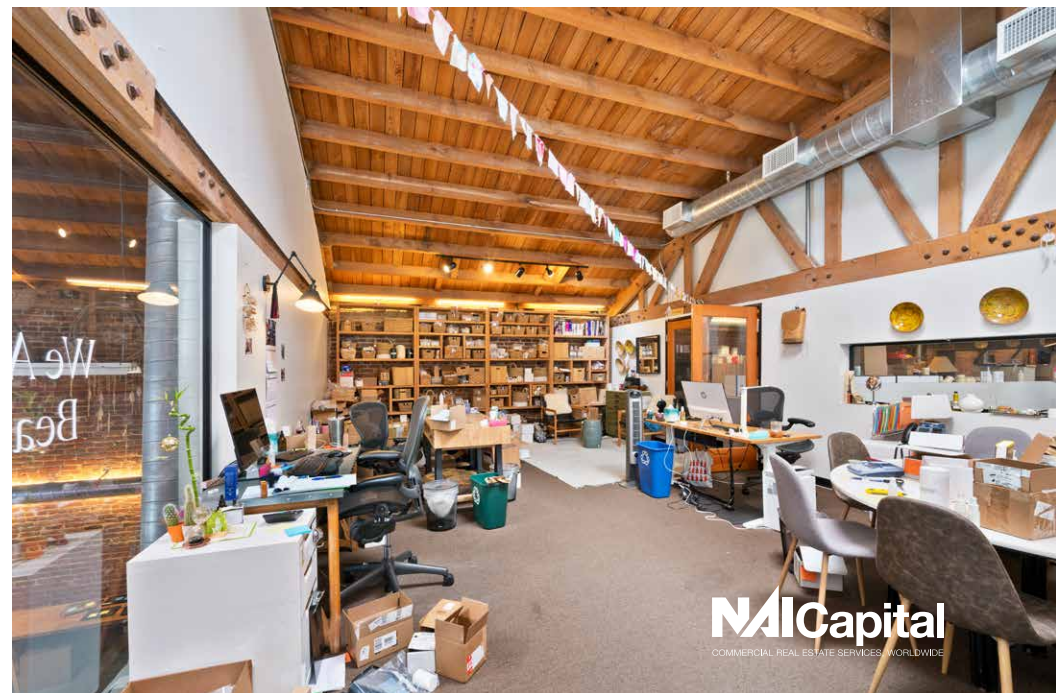
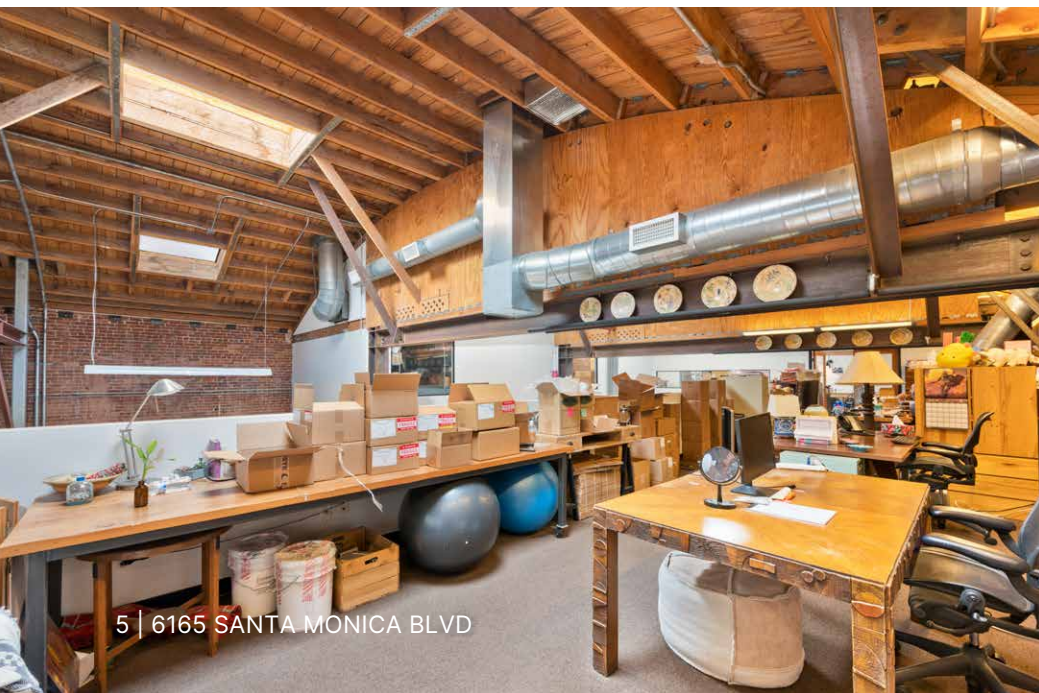
- Reception Area
- 6 Private Offices
- Roll Up Door
- Fully Equipped Kitchen
- Large Open Workspace / Bullpen
- 1 Conference Room
- Open Area Adjacent to Roll Up Door
- Private Restroom



2nd Floor



- Two Separate Large Open Work Areas
- Executive Glass Office Overlooking the First Floor
- Multiple Storage Closets

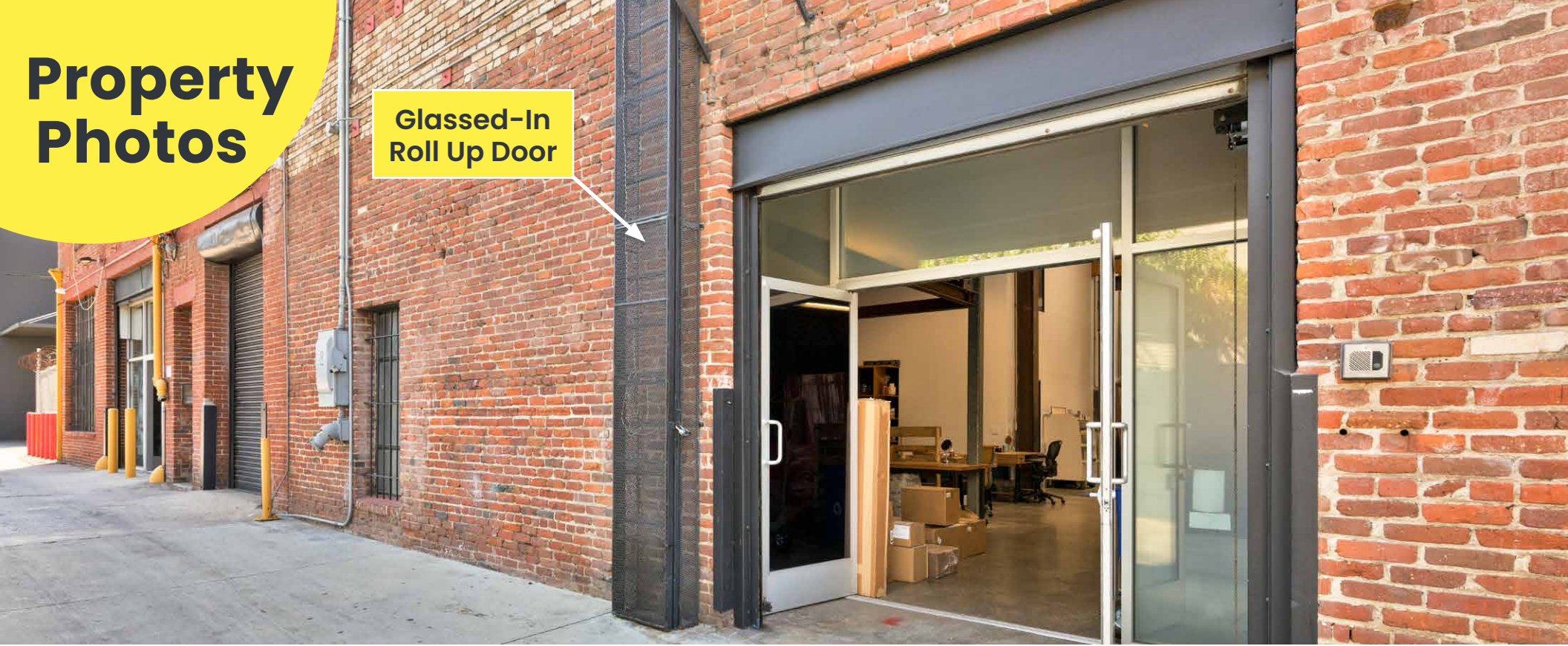


Property Photos

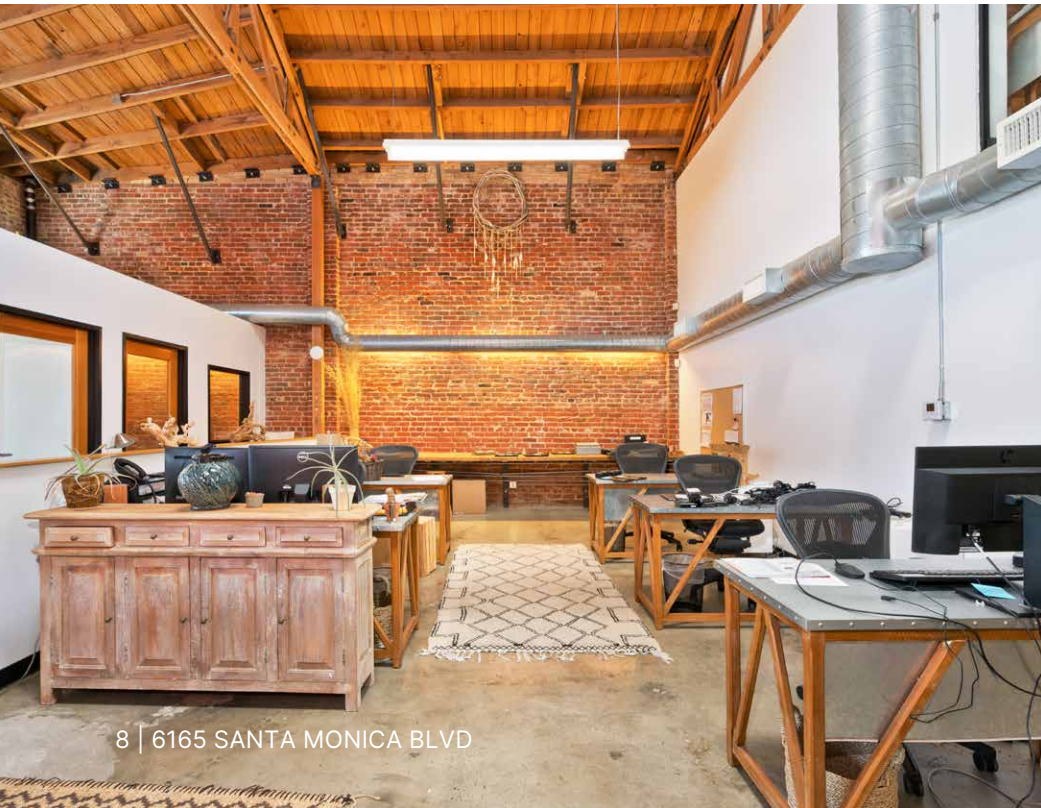


Property Photos

Glassed-In Roll Up Door



Property Photos



8 | 6165 SANTA MONICA BLVD



NaiCapital
COMMERCIAL REAL ESTATE SERVICES, WORLDWIDE

Retail Map

WALK SCORE
92

TRANSIT SCORE
61

BIKE SCORE
74

PUMA

NETFLIX

THE GODFREY
HOTEL HOLLYWOOD

ARCLIGHT
CINEMAS

SUNSET
MEDIA CENTER

COLUMBIA SQUARE
LIVING

NeueHouse

HOLLYWOOD
Production Center

Emerson
COLLEGE

Sunset
Studios

NETFLIX

HOLLYWOOD

SITE

N EL CENTRO AVE

44,938ATC

SANTA MONICA BLVD 2



Contact Info

JARED SWEDELSON

Vice President
d: 818-742-1632
m: 818-644-7597
jswedelson@naicapital.com
Cal DRE Lic #02105146

NAI CAPITAL - WEST LOS ANGELES

11835 W. Olympic Blvd., Suite 700E
Los Angeles, CA 90064
d: 310-806-6100
f: 310-806-6101
www.naicapital.com



No warranty, express or implied, is made as to the accuracy of the information contained herein. This information is submitted subject to errors, omissions, change of price, rental or other conditions, withdrawal without notice, and is subject to any special listing conditions imposed by our principals. Cooperating brokers, buyers, tenants and other parties who receive this document should not rely on it, but should use it as a starting point of analysis, and should independently confirm the accuracy of the information contained herein through a due diligence review of the books, records, files and documents that constitute reliable sources of the information described herein. NAI Capital Cal DRE #02130474

NAI Capital
COMMERCIAL REAL ESTATE SERVICES, WORLDWIDE