

6161 SANTA MONICA BLVD. LOS ANGELES 90038

FOR LEASE – SOPHISTICATED TWO-STORY CREATIVE OFFICE SPACE IN HOLLYWOOD



JARED SWEDELSON

Vice President
d: 818-742-1632
m: 818-644-7597
jswedelson@naicapital.com
Cal DRE Lic #02105146

NAI CAPITAL - WEST LA

11550 Santa Monica Blvd., Suite 1550
Los Angeles, CA 90025
d: 310-806-6100
f: 310-806-6101
www.naicapital.com

NAI Capital
COMMERCIAL REAL ESTATE SERVICES, WORLDWIDE

Building Details



Lease Rate:

\$2.50/SF

Available SF:

4,340 SF

Parking:

8 spaces

Space Features:

- Ground floor open workspace and reception area.
- Internal staircase leading to the second floor.
- 3 spacious private window offices.
- 5 private in-line offices.
- Large renovated conference room.
- Fully equipped kitchen.
- Built-out server room with mini splits.
- Private restroom in unit and public common area restrooms outside.

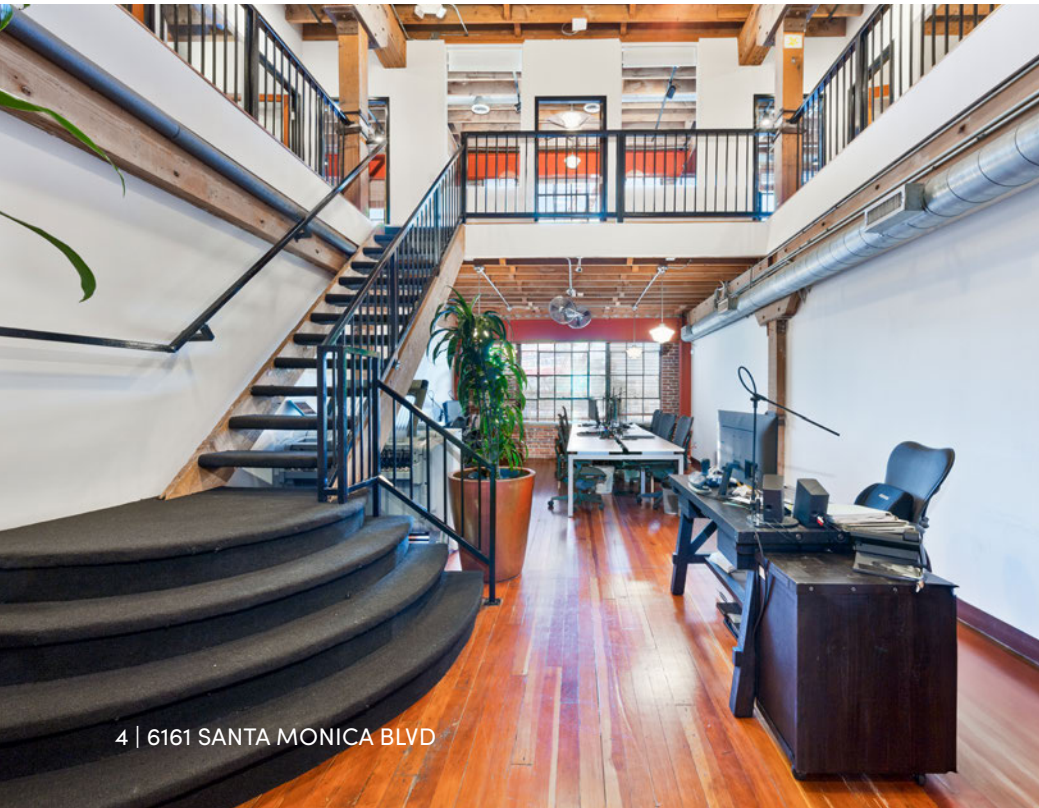
Property Description:

Fuel your creativity in this chic two-story urban office space, featuring expansive vintage windows, striking exposed brick, and soaring high ceilings. Located in the heart of the Hollywood Studio District, this distinctive space offers an inspiring environment for your business.

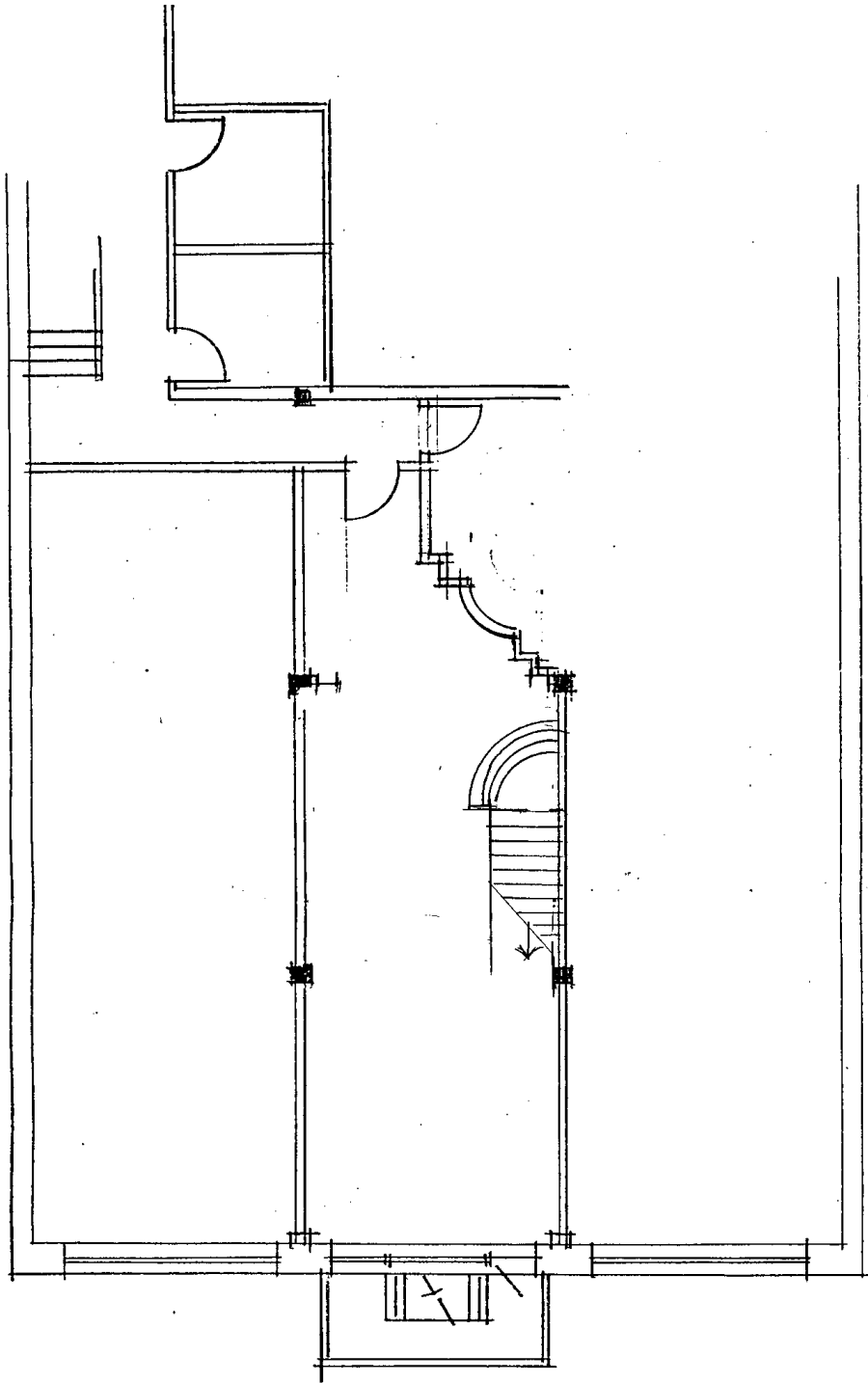
Property Photos



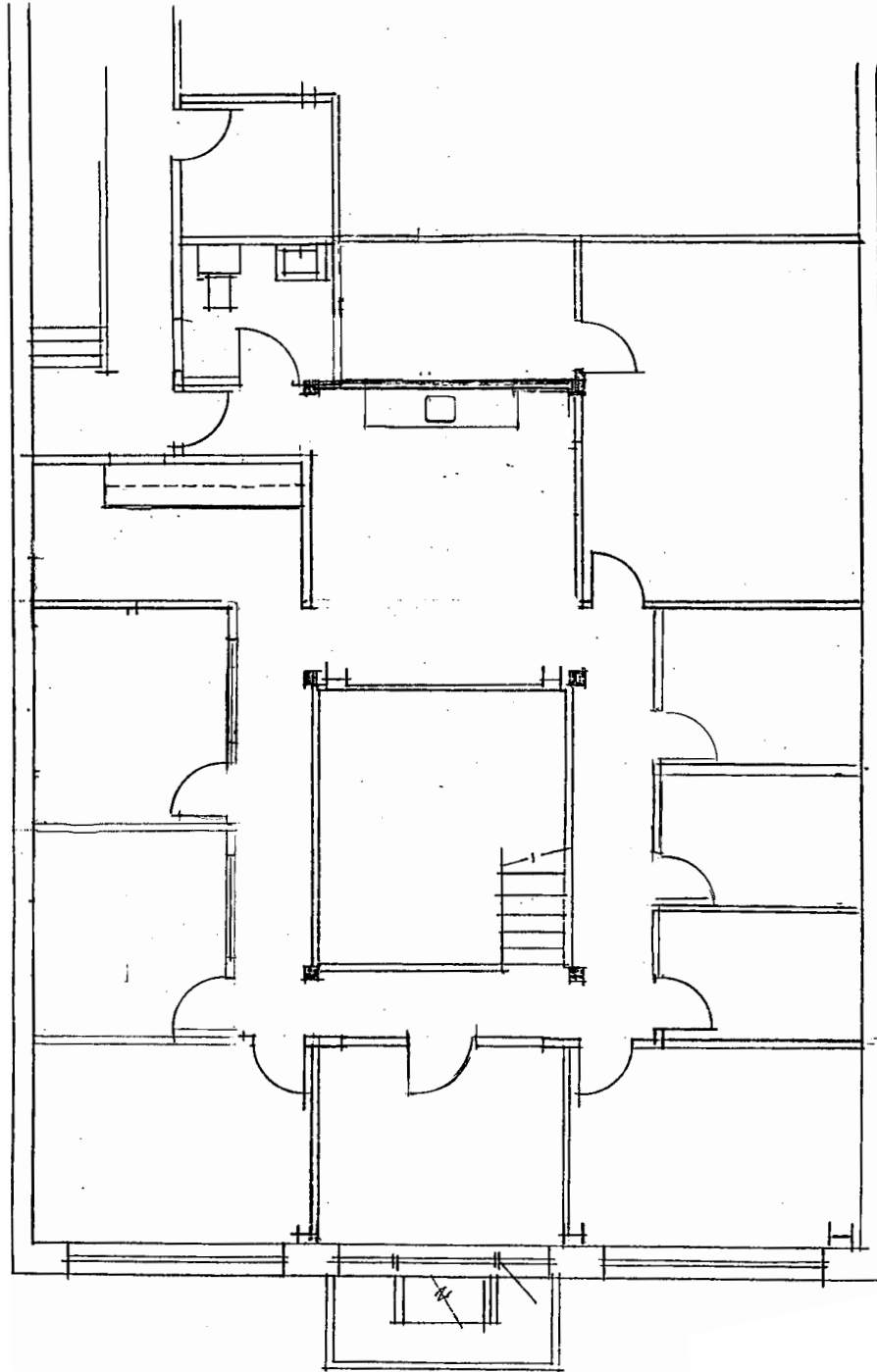
Property Photos



2ND Floor Plan



3RD Floor Plan



Retail Map



7 | 6161 SANTA MONICA BLVD

Contact Info

JARED SWEDELSON
Vice President
d: 818-742-1632
m: 818-644-7597
jswedelson@naicapital.com
Cal DRE Lic #02105146

NAI CAPITAL - WEST LOS ANGELES
11835 W. Olympic Blvd., Suite 700E
Los Angeles, CA 90064
d: 310-806-6100
f: 310-806-6101
www.naicapital.com



No warranty, express or implied, is made as to the accuracy of the information contained herein. This information is submitted subject to errors, omissions, change of price, rental or other conditions, withdrawal without notice, and is subject to any special listing conditions imposed by our principals. Cooperating brokers, buyers, tenants and other parties who receive this document should not rely on it, but should use it as a starting point of analysis, and should independently confirm the accuracy of the information contained herein through a due diligence review of the books, records, files and documents that constitute reliable sources of the information described herein. NAI Capital Cal DRE #02130474

NAI Capital
COMMERCIAL REAL ESTATE SERVICES, WORLDWIDE