

6150

SANTA MONICA BLVD., LOS ANGELES 90038

FOR LEASE – STAND ALONE BUILDING
WITH LARGE GATED PARKING

YOUR BRAND
NAME HERE



JARED SWEDELSON
Vice President
d: 818-742-1632
m: 818-644-7597
jswedelson@naicapital.com
Cal DRE Lic #02105146

NAI CAPITAL - WEST LOS ANGELES
11835 W. Olympic Blvd., Suite 700E
Los Angeles, CA 90064
d: 310-806-6100
f: 310-806-6101
www.naicapital.com

NAICapital
COMMERCIAL REAL ESTATE SERVICES, WORLDWIDE

Building Details



Lease Rate:

\$2.65/SF NNN

Building Size:

±8,000 RSF
(4,000 SF per floor)

Parking:

Approximately 25 spaces

Zoning:

C2

Key Highlights:

- **Stand-alone Building** – Unique opportunity to occupy an entire building with great signage visibility
- **Unlimited Functionality** – Retail/office, showroom, Production etc.... (ability to open up space for an open layout).
- **Irreplaceable Location** – The Famous Route 66 in the Heart of Hollywood Studio District.

Property Photos

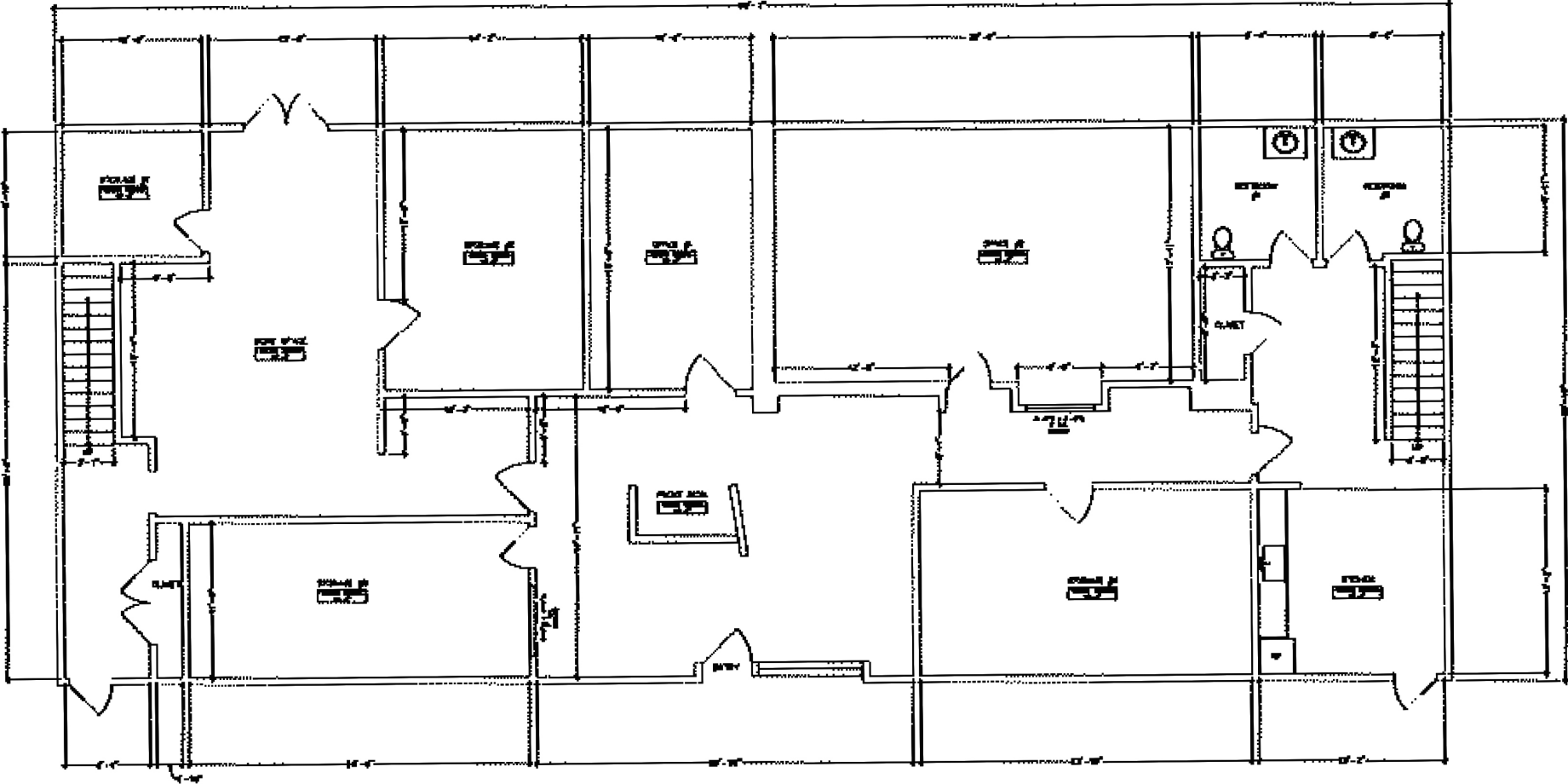


3 | 26150 SANTA MONICA BLVD

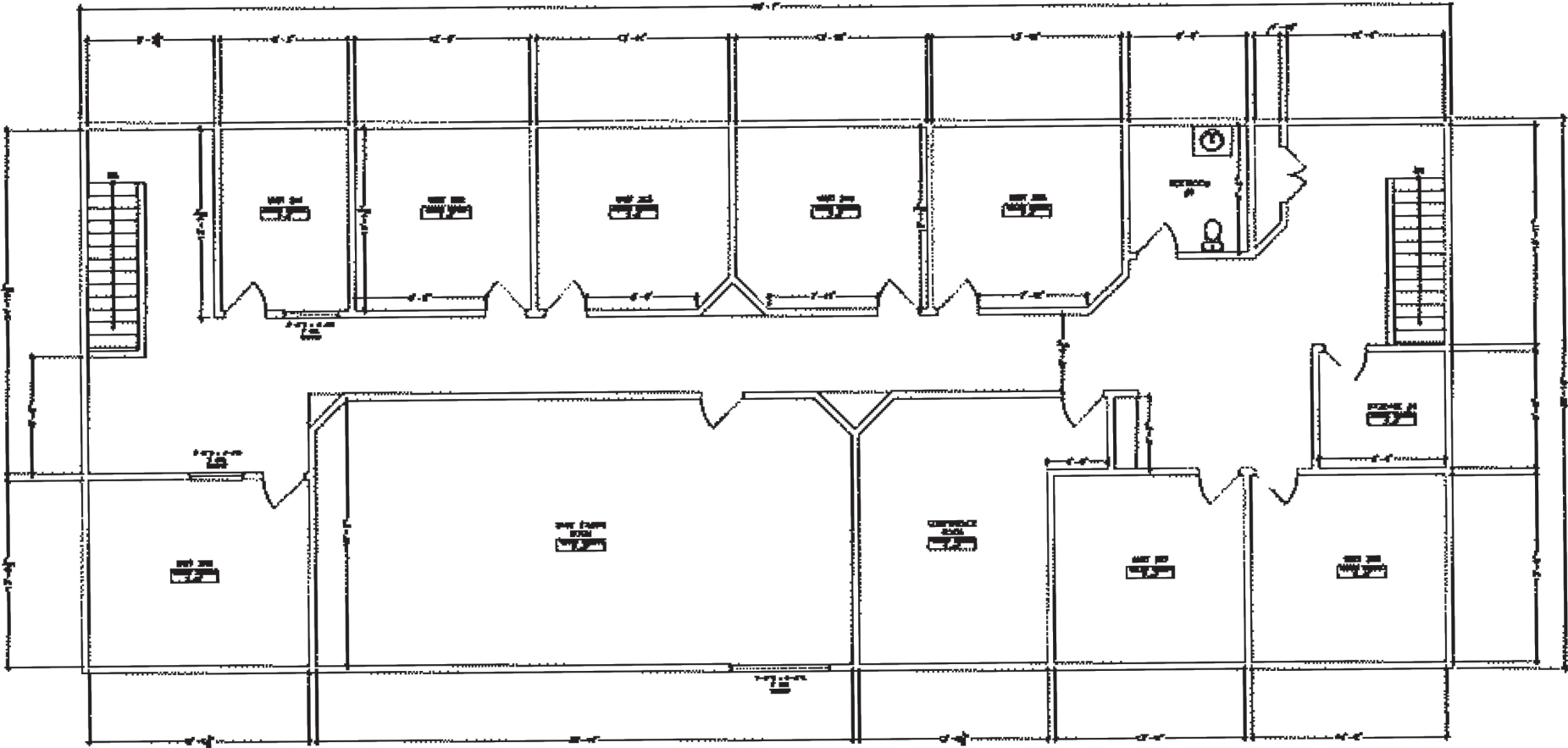
Property Photos



1ST Floor Plan



2ND Floor Plan



Retail Map



Contact Info

JARED SWEDELSON

Vice President
d: 818-742-1632
m: 818-644-7597
jswedelson@naicapital.com
Cal DRE Lic #02105146

NAI CAPITAL - WEST LOS ANGELES

11835 W. Olympic Blvd., Suite 700E
Los Angeles, CA 90064
d: 310-806-6100
f: 310-806-6101
www.naicapital.com

No warranty, express or implied, is made as to the accuracy of the information contained herein. This information is submitted subject to errors, omissions, change of price, rental or other conditions, withdrawal without notice, and is subject to any special listing conditions imposed by our principals. Cooperating brokers, buyers, tenants and other parties who receive this document should not rely on it, but should use it as a starting point of analysis, and should independently confirm the accuracy of the information contained herein through a due diligence review of the books, records, files and documents that constitute reliable sources of the information described herein. NAI Capital Cal DRE #02130474