

FOR LEASE- STUDIO & CREATIVE OFFICE SPACE

LODI CAMPUS - HOLLYWOOD STUDIO DISTRICT

6121 SANTA MONICA BLVD., LOS ANGELES 90038



JARED SWEDELSON

Vice President

d: 818-742-163

m: 818-644-7597

jswedelson@naicapital.com

Cal DRE Lic #02105146

NAI CAPITAL - WEST LOS ANGELES

11550 Santa Monica Blvd., Suite 1550

Los Angeles, CA 90025

d: 310-806-6100

f: 310-806-6101

www.naicapital.com

NAI Capital
COMMERCIAL REAL ESTATE SERVICES, WORLDWIDE

Property Details



Lease Rate:

\$2.85/SF NNN

Building Size:

7,136 SF

Parking:

1.5/1,000

Welcome to the Lodi Campus

Step into a dynamic and flexible environment that caters to your creative needs. This exceptional property offers a multitude of possibilities, seamlessly transitioning from Sound Stages to coveted creative office spaces. With its adaptability, this building effortlessly accommodates a diverse range of purposes, ensuring that your unique requirements are met. Ample parking facilities are readily available, while an abundance of natural light floods the space, complementing the high ceilings and open floor plans that are fully customizable to suit your preferences.

Suite Details: Studio B

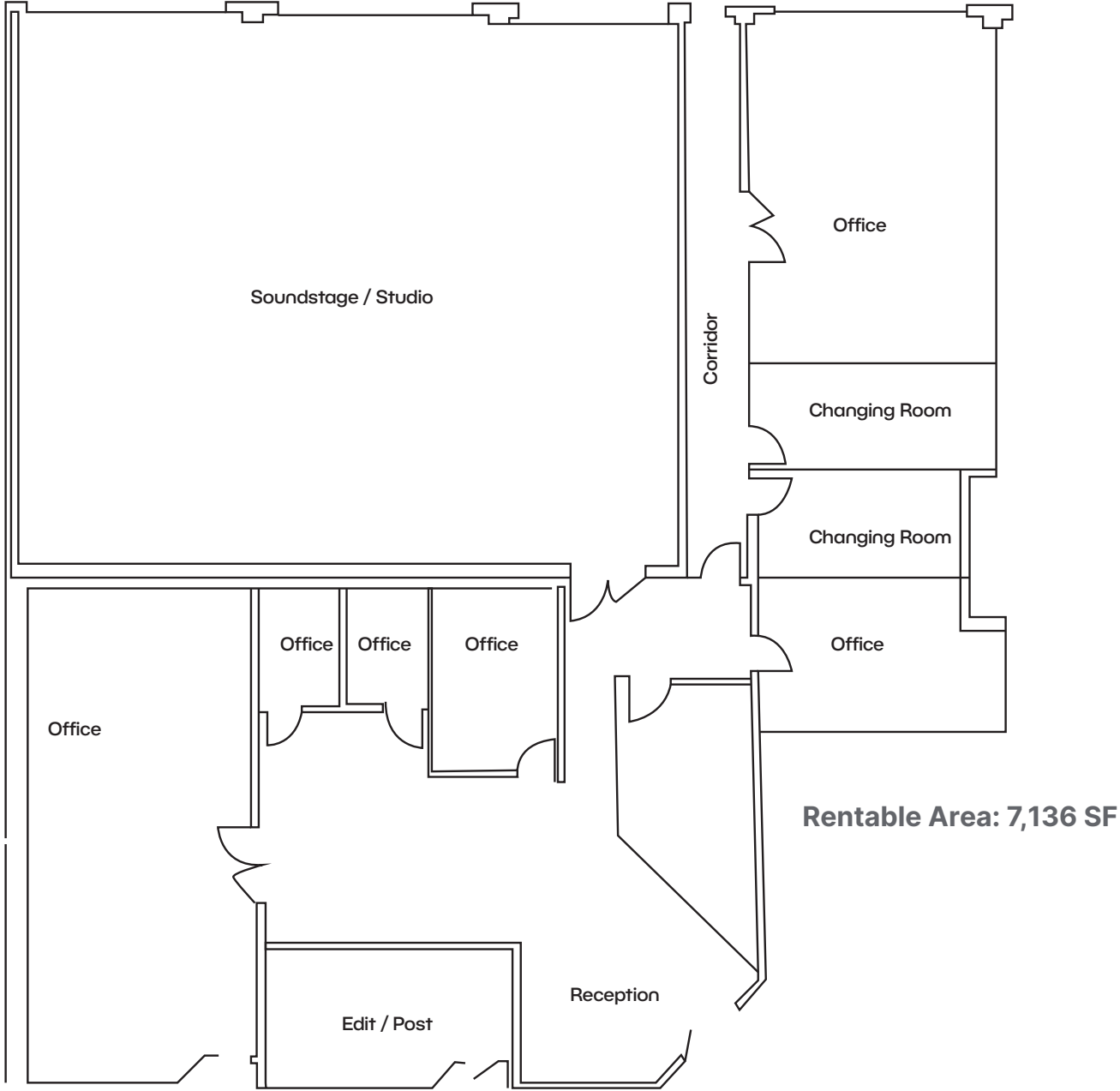
SUITE HIGHLIGHTS

Size: 7,136 SF

FEATURES

- 19 – 25 ft high sound stage
- 12 X 12 roll up door
- 6 offices
- 1 conference room
- 2 changing rooms
- Kitchenette

Floor Plan Studio B



Offering Details

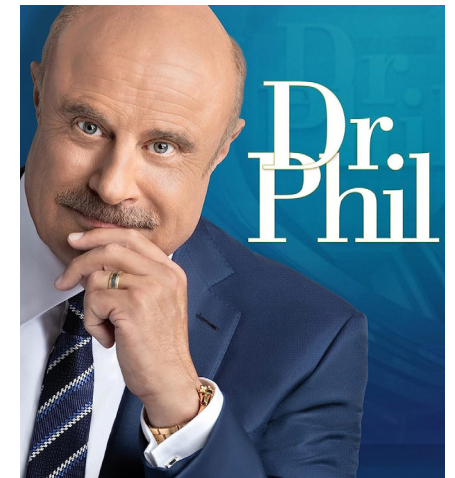


Key Highlights:

- **Irreplaceable Location:** The Famous Route 66 in the Heart of Hollywood Studio District.
- **Unlimited Functionality:** Production, Studio, Creative Office, Techtainment etc.
- **Hollywood History:** Previously used for the post-production of Dr. Phil's show for 21 seasons.



5 | 6121 SANTA MONICA BLVD - STUDIO B





Retail Map



Contact Info

JARED SWEDELSON

Vice President
d: 818-742-1632
m: 818-644-7597
jswedelson@naicapital.com
Cal DRE Lic #02105146

NAI CAPITAL - WEST LOS ANGELES

11550 Santa Monica Blvd., Suite 1550
Los Angeles, CA 90025
d: 310-806-6100
f: 310-806-6101
www.naicapital.com

No warranty, express or implied, is made as to the accuracy of the information contained herein. This information is submitted subject to errors, omissions, change of price, rental or other conditions, withdrawal without notice, and is subject to any special listing conditions imposed by our principals. Cooperating brokers, buyers, tenants and other parties who receive this document should not rely on it, but should use it as a starting point of analysis, and should independently confirm the accuracy of the information contained herein through a due diligence review of the books, records, files and documents that constitute reliable sources of the information described herein. NAI Capital Cal DRE #02130474