

FOR LEASE - STUDIO & CREATIVE OFFICE SPACE

LODI CAMPUS - HOLLYWOOD STUDIO DISTRICT

6121 SANTA MONICA BLVD., LOS ANGELES 90038

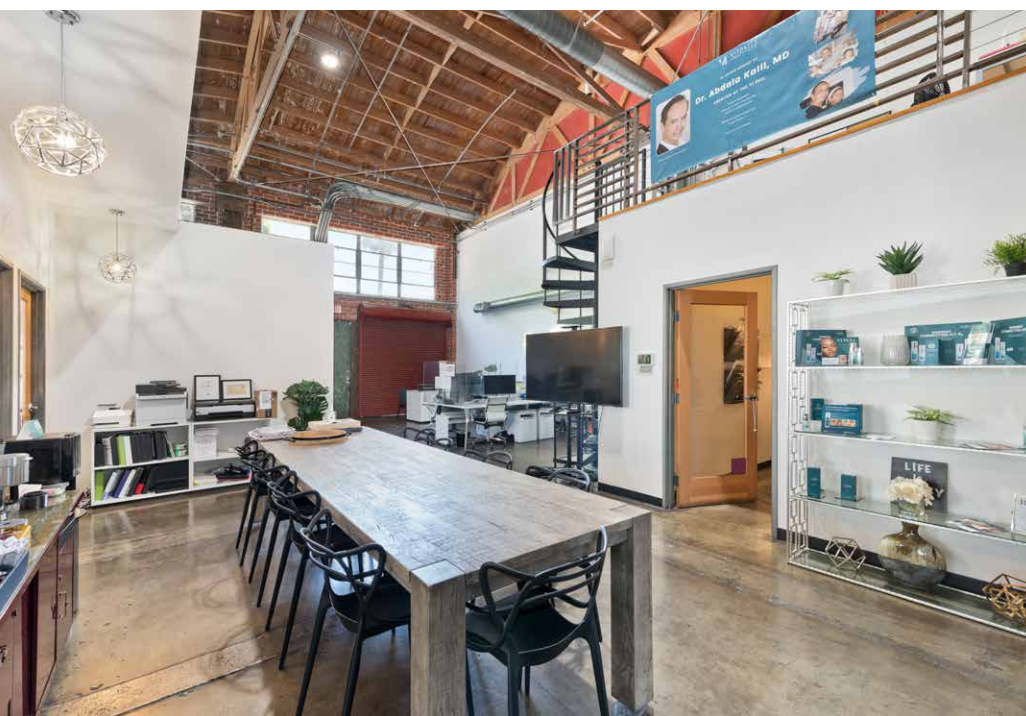


JARED SWEDELSON
Vice President
d: 818-742-1632
m: 818-644-7597
jswedelson@naicapital.com
Cal DRE Lic #02105146

NAI CAPITAL - WEST LOS ANGELES
11835 W. Olympic Blvd., Suite 700E
Los Angeles, CA 90064
d: 310-806-6100
f: 310-806-6101
www.naicapital.com

NAI Capital
COMMERCIAL REAL ESTATE SERVICES, WORLDWIDE

PROPERTY OVERVIEW



LEASE RATE:

\$2.65/SF NNN

PARKING:

1.5/1,000

BUILDING SIZE

Studio A:

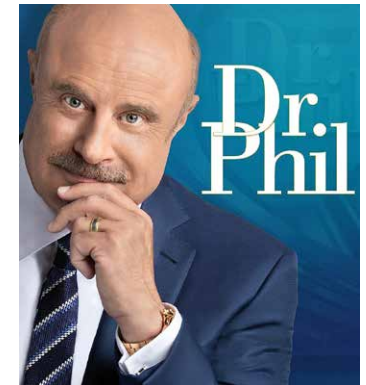
3,378 SF

Suite 200:

7,204 SF

KEY HIGHLIGHTS

- **Irreplaceable Location:** The Famous Route 66 in the Heart of Hollywood Studio District.
- **Unlimited Functionality:** Production, Studio, Creative wOffice, Techtainment etc.
- **Hollywood History:** Previously used for the post-production of Dr.Phil's show for 21 seasons.



WELCOME TO THE LODI CAMPUS

Step into a dynamic and flexible environment that caters to your creative needs. This exceptional property offers a multitude of possibilities, seamlessly transitioning from Sound Stages to coveted creative office spaces. With its adaptability, this building effortlessly accommodates a diverse range of purposes, ensuring that your unique requirements are met. Ample parking facilities are readily available, while an abundance of natural light floods the space, complementing the high ceilings and open floor plans that are fully customizable to suit your preferences.

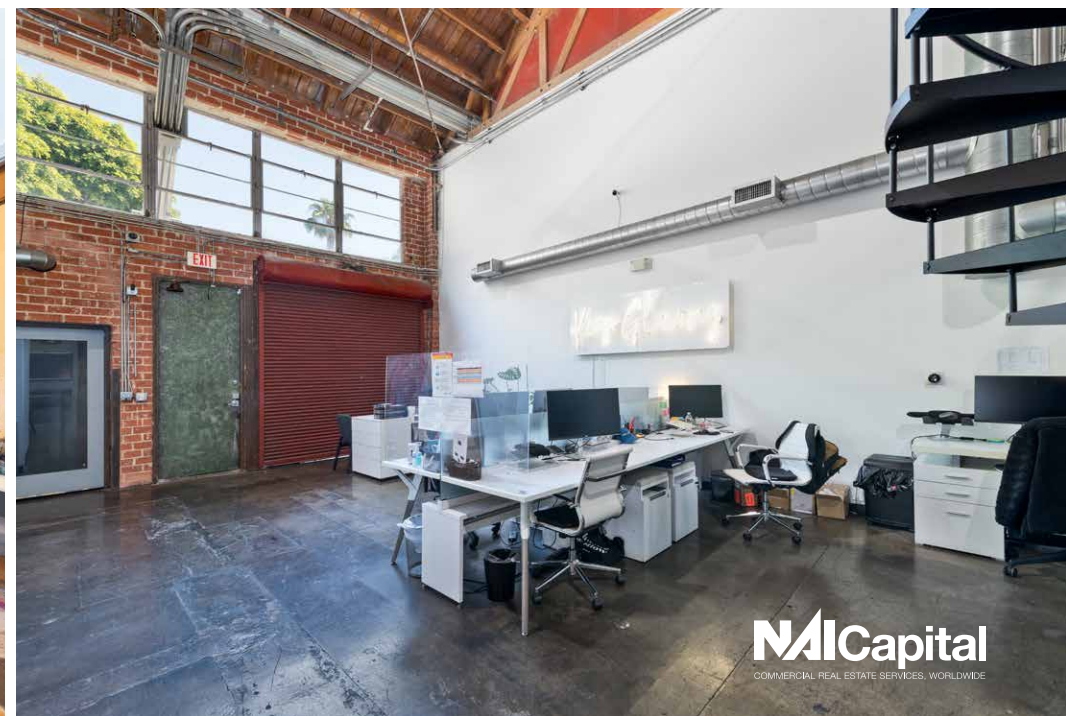
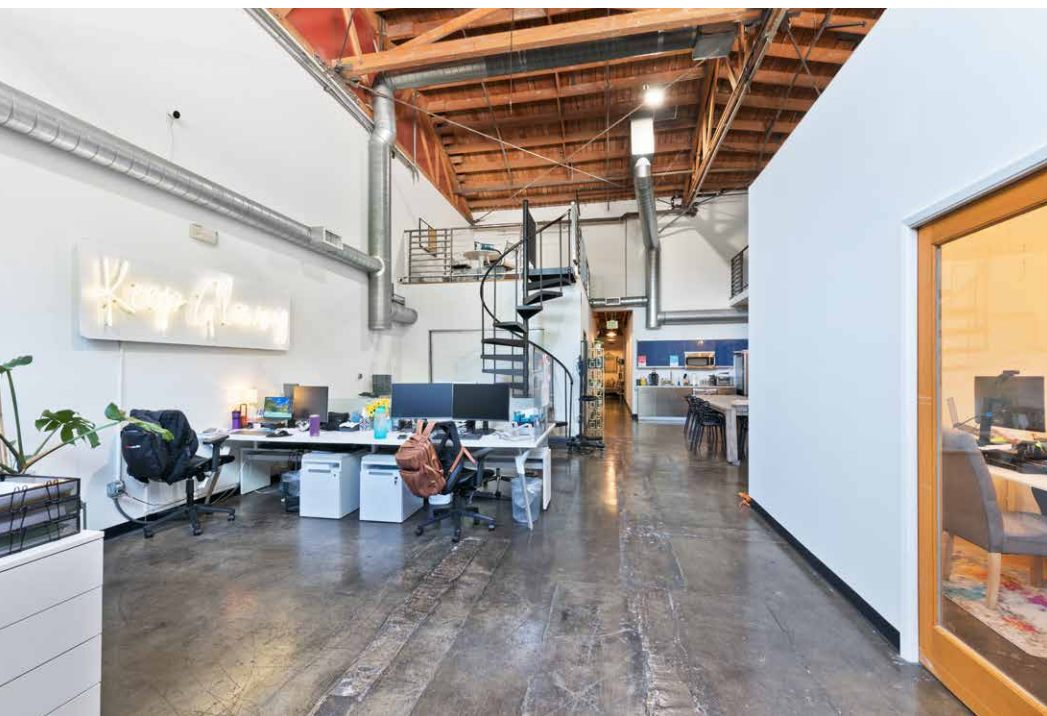
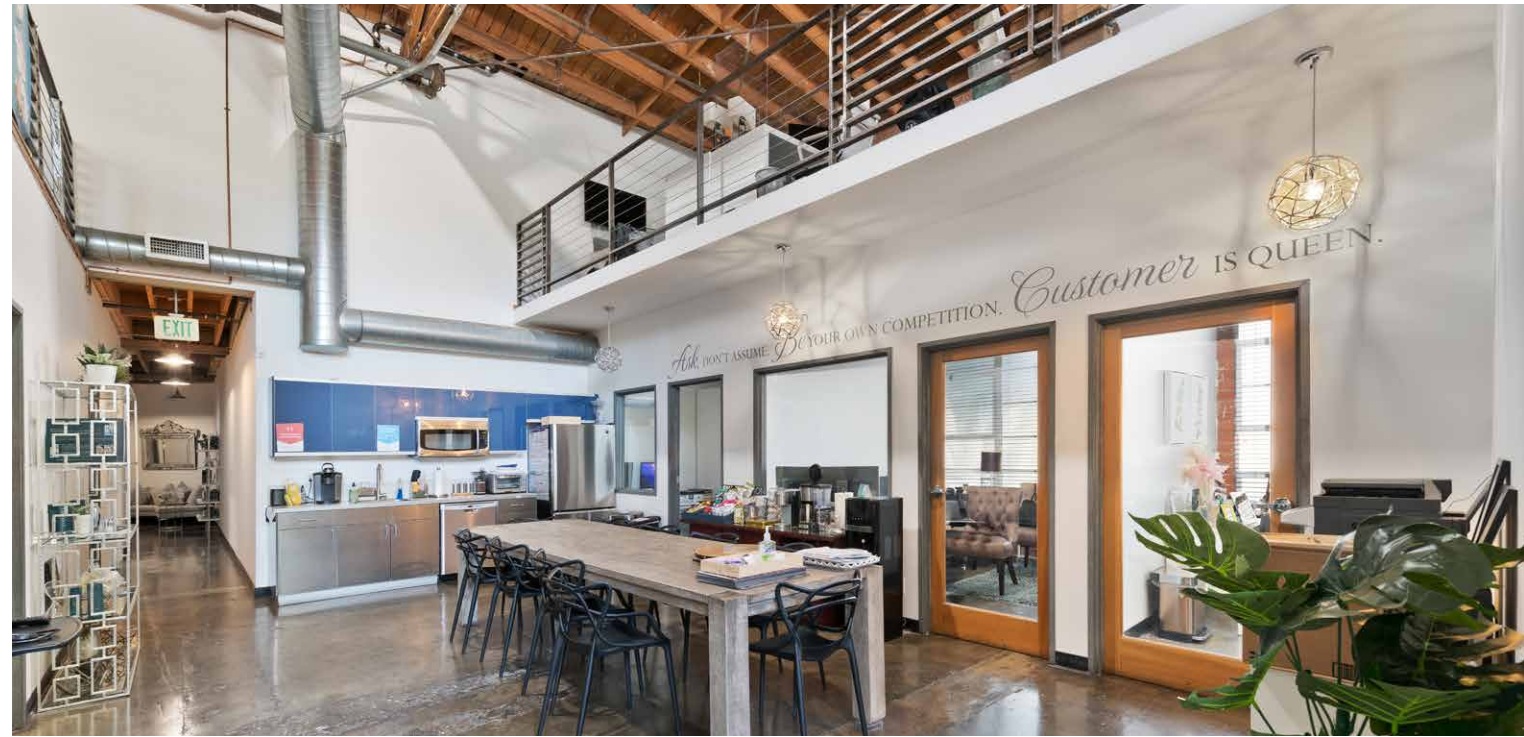
STUDIO A – CREATIVE OFFICE

SUITE HIGHLIGHTS

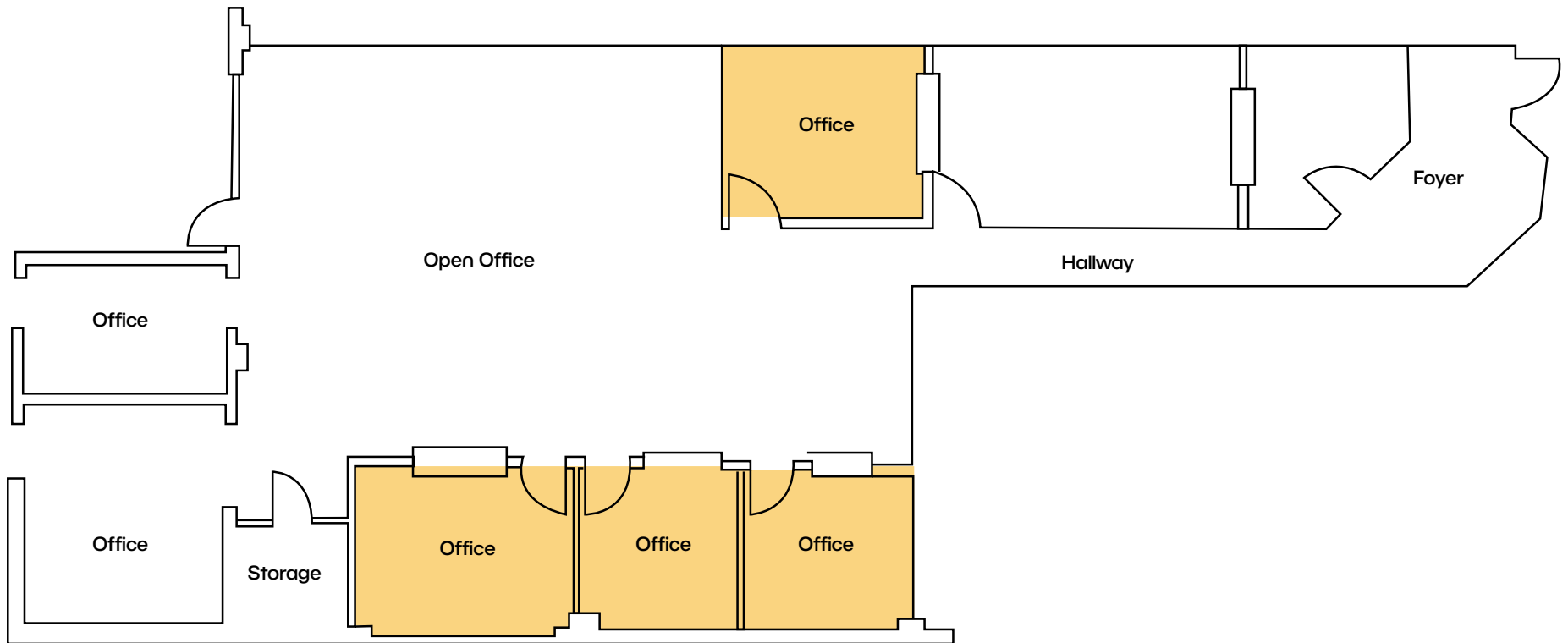
Size: 3,378 SF

FEATURES

- 12 X 12 roll up door
- 7 interior offices
- Conference Room
- Roll Up Door
- 4 Mezzanine Offices



STUDIO A – CREATIVE OFFICE



Rentable Area: 3,378 SF

3,103 SF Floor

215 SF Mezzanine

3,378 SF Total

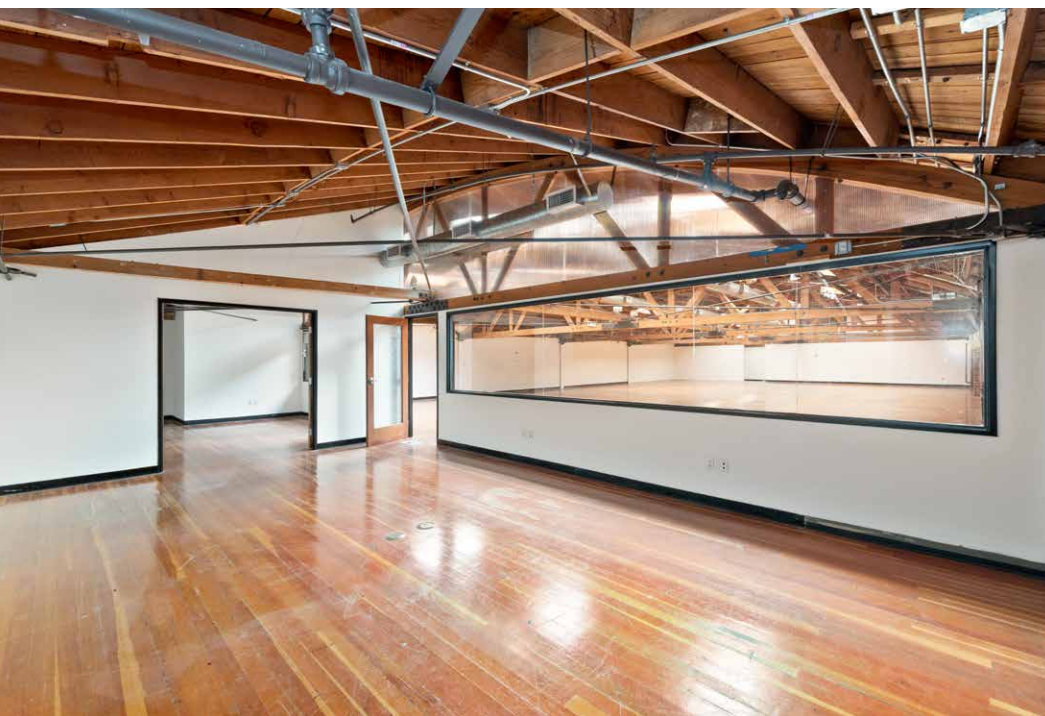
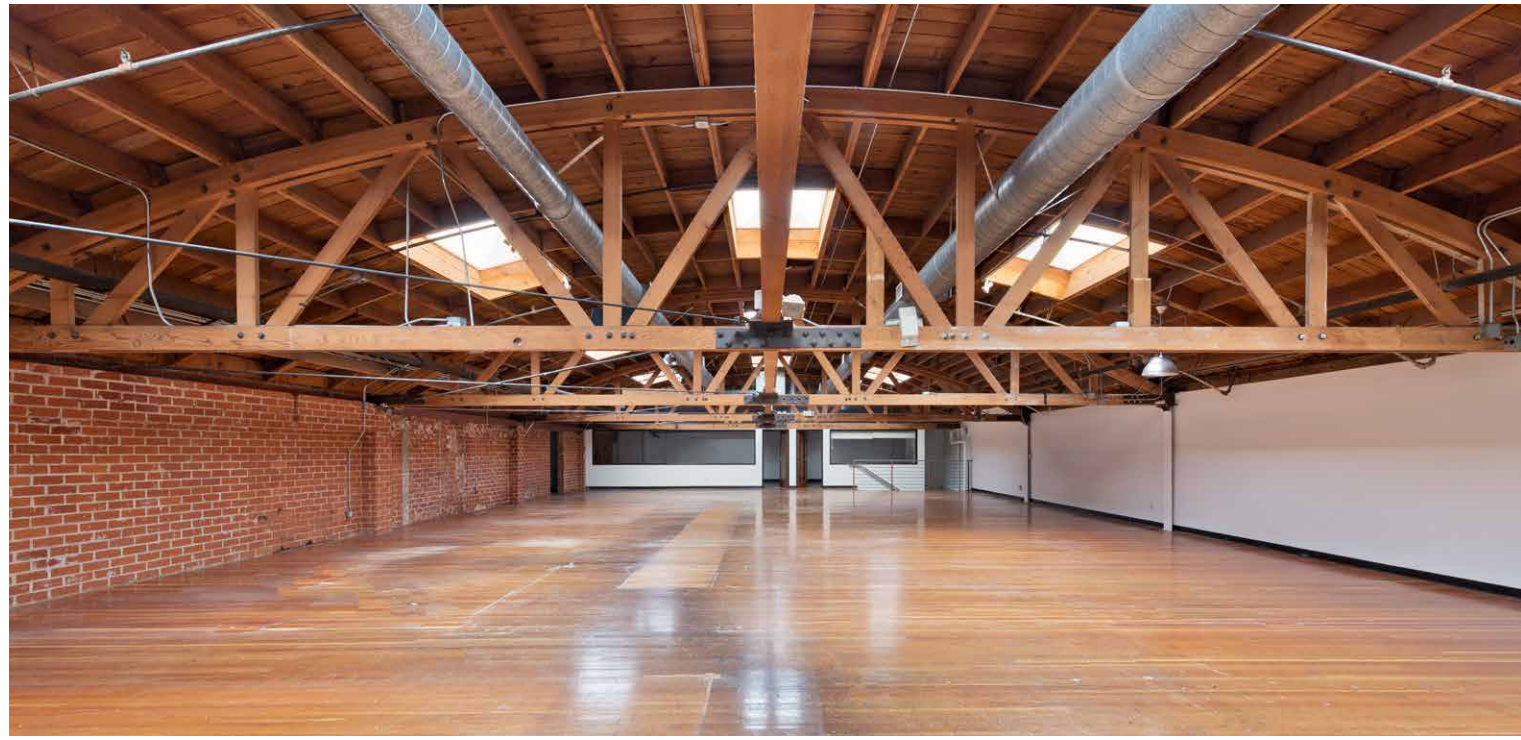
SUITE 200 - CREATIVE OFFICE

SUITE HIGHLIGHTS

Size: 7,204 SF

FEATURES

- Large wide open space
- Tons of natural light
- 4 interior offices
- Kitchenette



RETAIL MAP



CONTACT INFORMATION

JARED SWEDELSON

Vice President

d: 818-742-1632

m: 818-644-7597

jswedelson@naicapital.com

Cal DRE Lic #02105146

NAI CAPITAL - WEST LOS ANGELES

11835 W. Olympic Blvd., Suite 700E

Los Angeles, CA 90064

d: 310-806-6100

f: 310-806-6101

www.naicapital.com

No warranty, express or implied, is made as to the accuracy of the information contained herein. This information is submitted subject to errors, omissions, change of price, rental or other conditions, withdrawal without notice, and is subject to any special listing conditions imposed by our principals. Cooperating brokers, buyers, tenants and other parties who receive this document should not rely on it, but should use it as a starting point of analysis, and should independently confirm the accuracy of the information contained herein through a due diligence review of the books, records, files and documents that constitute reliable sources of the information described herein. NAI Capital Cal DRE #0213047