

1820 N CAHUENGA BLVD LOS ANGELES, CA



L.A. LAUNDRY CO.
LAUNDROMAT • LAUNDRESS • DROP-OFF LAUNDRY



JARED SWEDELSON

Vice President
d: 818-742-1632
m: 818-644-7597
jswedelson@naicapital.com
Cal DRE Lic #02105146

JESSE PASTER

Vice President
d: 818-905-2400
m: 213-458-1974
jpaster@naicapital.com
Cal DRE Lic #01316106

NAI CAPITAL - WEST LA

11835 W. Olympic Blvd.,
Suite 700E
Los Angeles, CA 90064
d: 310-806-6100 | f: 310-806-6101
www.naicapital.com



Building Details



VACANT SPACE

Los Angeles Demographics	
	2 Miles
Population	153,954
Avg. Household Income	\$111,924

Building SF:

±2,840 SF

Price:

\$3.95/SF

2 | 1820 N CAHUENGA BLVD

Expense Structure:

NNN (\$.54/SF)

Parking:

Onsite surface parking

Key Highlights:

- Corner signage opportunity (Cahuenga X Yucca)
- Ample time to get food permits
- Next to 711
- Onsite surface parking

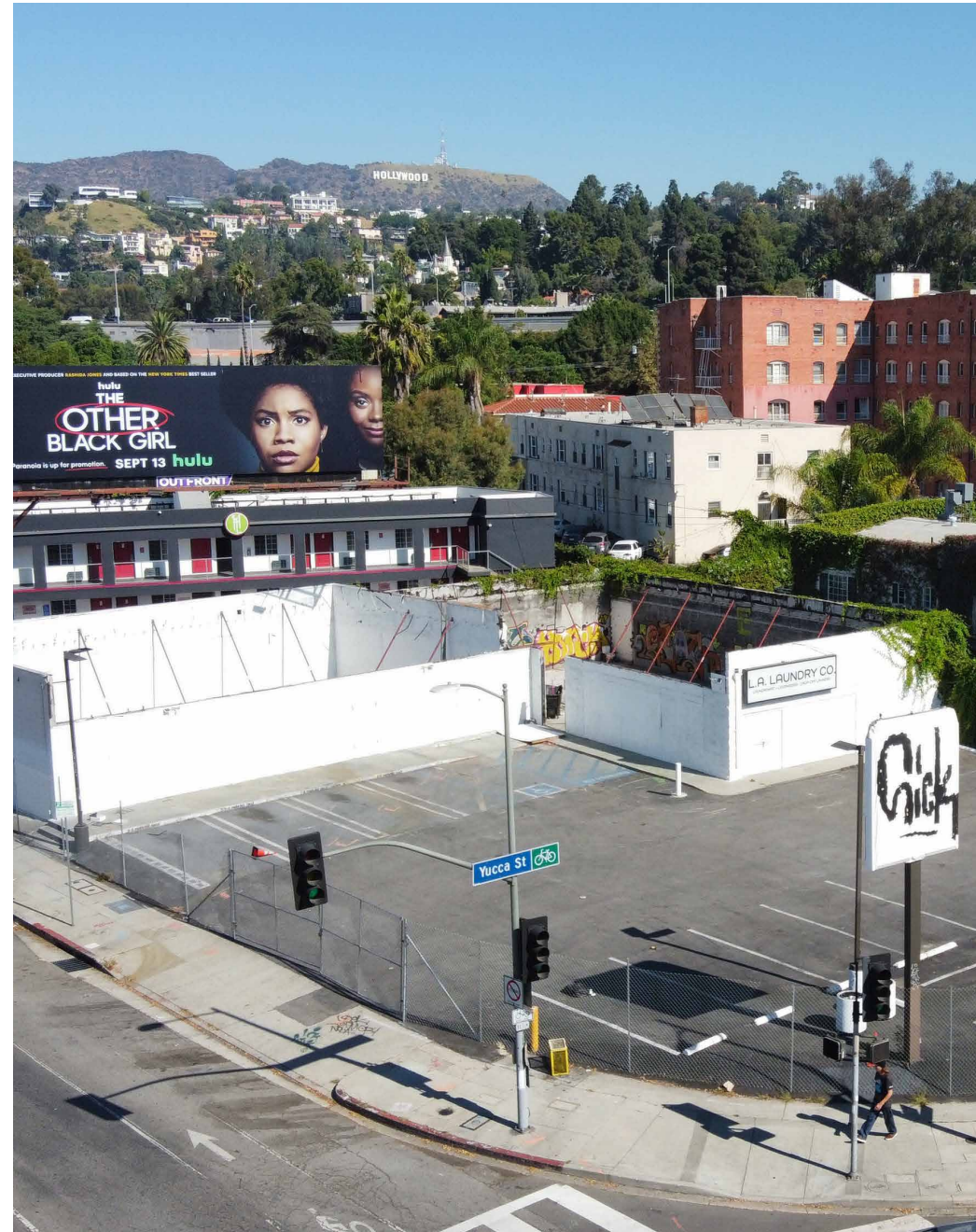
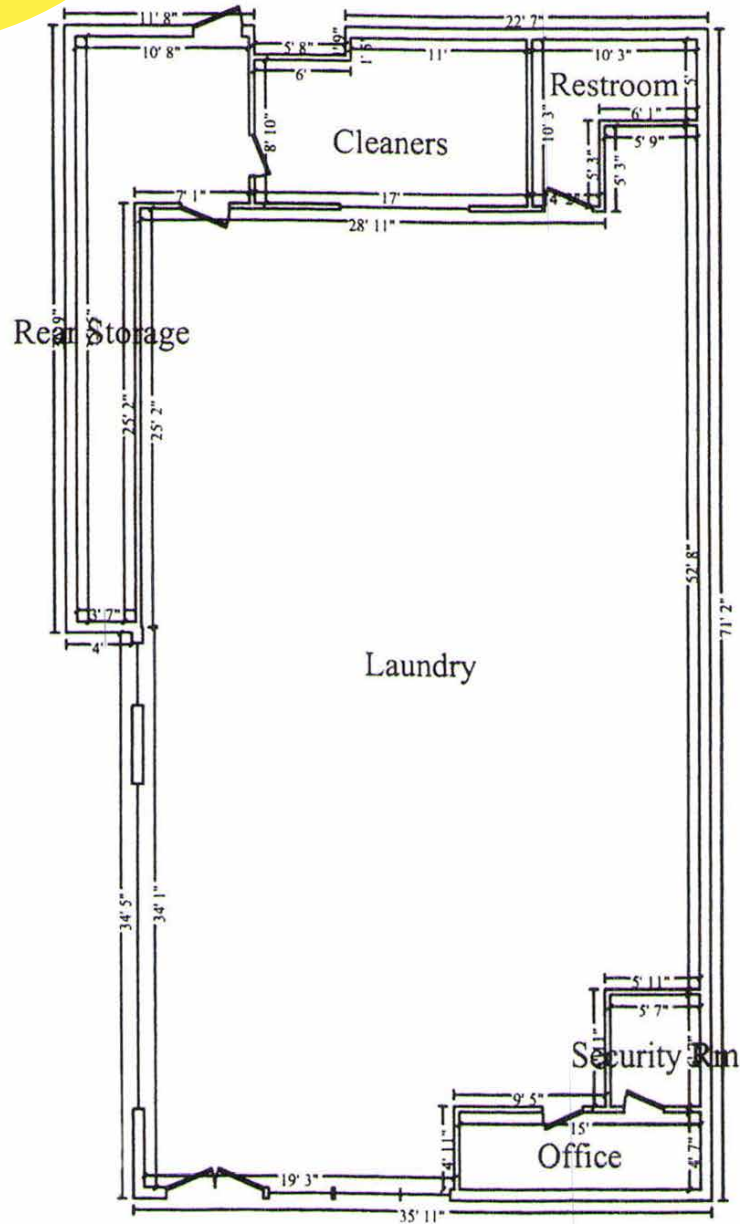
Property Photo



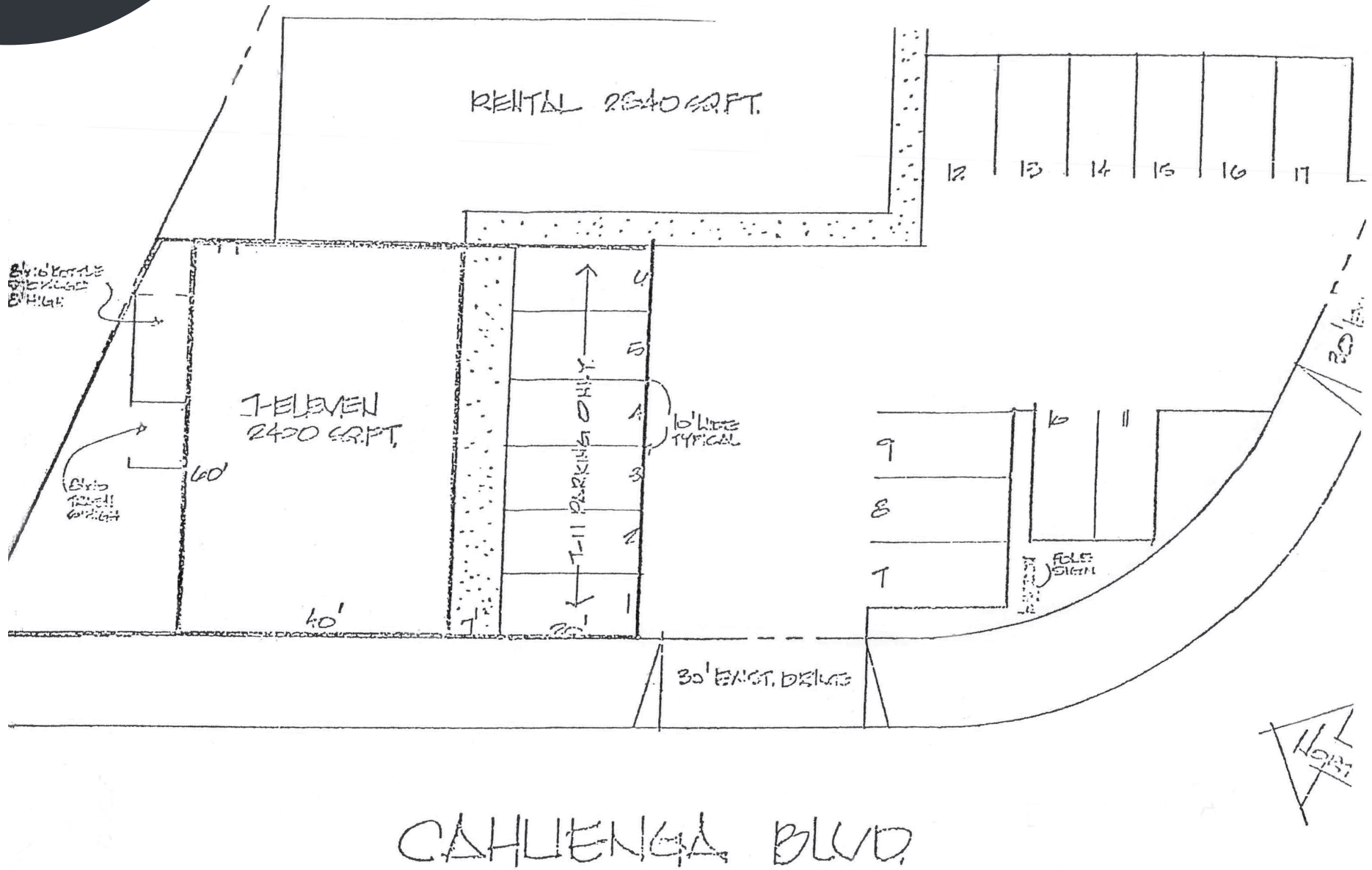
Property Description:

A great opportunity to build out a restaurant in shell condition becoming the second anchor tenant at the bustling intersection of Cahuenga X Yucca. The previous structure burnt down last year, but currently ownership is re-constructing the building and is set to be ready within the next 10 to 12 months. The neighboring building will house a 7-11, while the remaining area will be designated for great signage opportunities and customer surface parking.

Floor Plan



Site Plan



Retail Map

HOLLYWOOD



Contact Info

JARED SWEDELSON

Vice President
d: 818-742-1632
m: 818-644-7597
jswedelson@naicapital.com
Cal DRE Lic #02105146

JESSE PASTER

Vice President
d: 818-905-2400
m: 213-458-1974
jpaster@naicapital.com
Cal DRE Lic #01316106

NAI CAPITAL - WEST LA

11835 W. Olympic Blvd.,
Suite 700E
Los Angeles, CA 90064
d: 310-806-6100 | f: 310-806-6101
www.naicapital.com



No warranty, express or implied, is made as to the accuracy of the information contained herein. This information is submitted subject to errors, omissions, change of price, rental or other conditions, withdrawal without notice, and is subject to any special listing conditions imposed by our principals, cooperating brokers, buyers, tenants and other parties who receive this document should not rely on it, but should use it as a starting point of analysis, and should independently confirm the accuracy of the information contained herein through a due diligence review of the books, records, files and documents that constitute reliable sources of the information described herein. NAI Capital Cal DRE #02130474

NAI Capital
COMMERCIAL REAL ESTATE SERVICES, WORLDWIDE