

1715 N GOWER ST LOS ANGELES, CA

Stand-Alone Creative Oasis in Hollywood



JARED SWEDELSON
Vice President
d: 818-742-1632
m: 818-644-7597
jswedelson@naicapital.com
Cal DRE Lic #02105146

NAI CAPITAL - WEST LOS ANGELES
11835 W. Olympic Blvd., Suite 700E
Los Angeles, CA 90064
d: 310-806-6100
f: 310-806-6101
www.naicapital.com

NAICapital
COMMERCIAL REAL ESTATE SERVICES, WORLDWIDE

Building Details

Building Size:

9,380 SF

Lease Price:

~~\$3.95/SF NNN~~ (\$0.27/SF)

\$3.50/SF NNN

Parking:

28 Spaces (potential to convert into outdoor space)

Furniture:

Negotiable

1st Floor

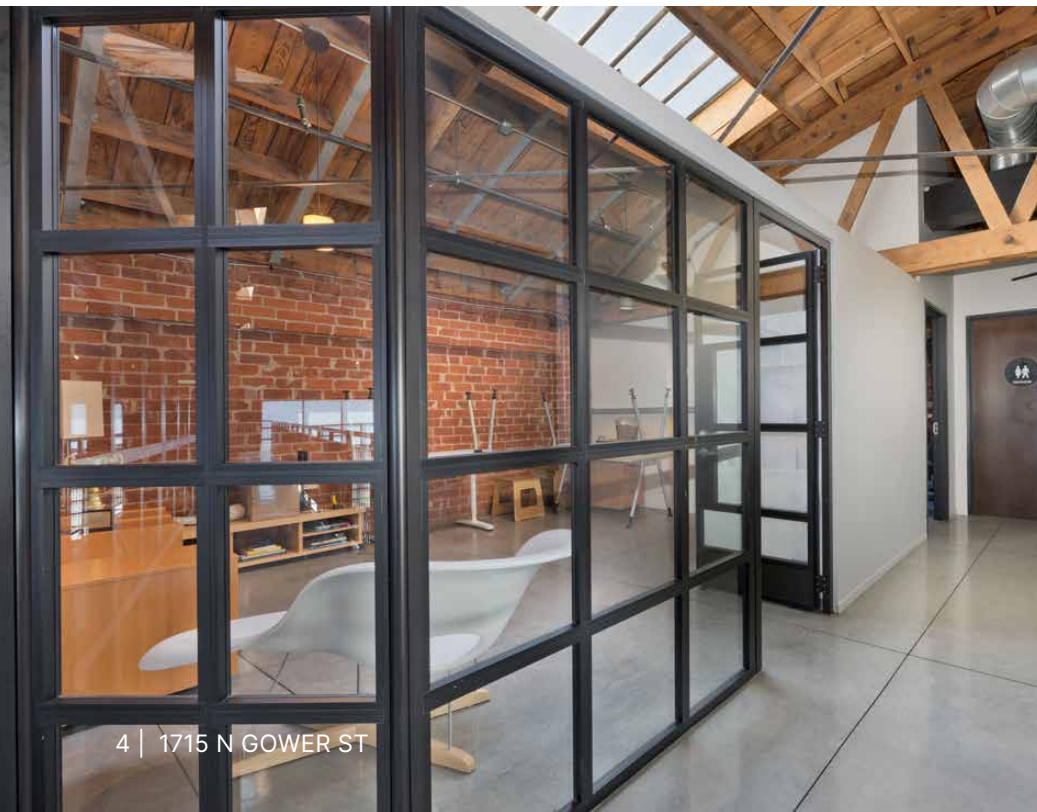


1st Floor

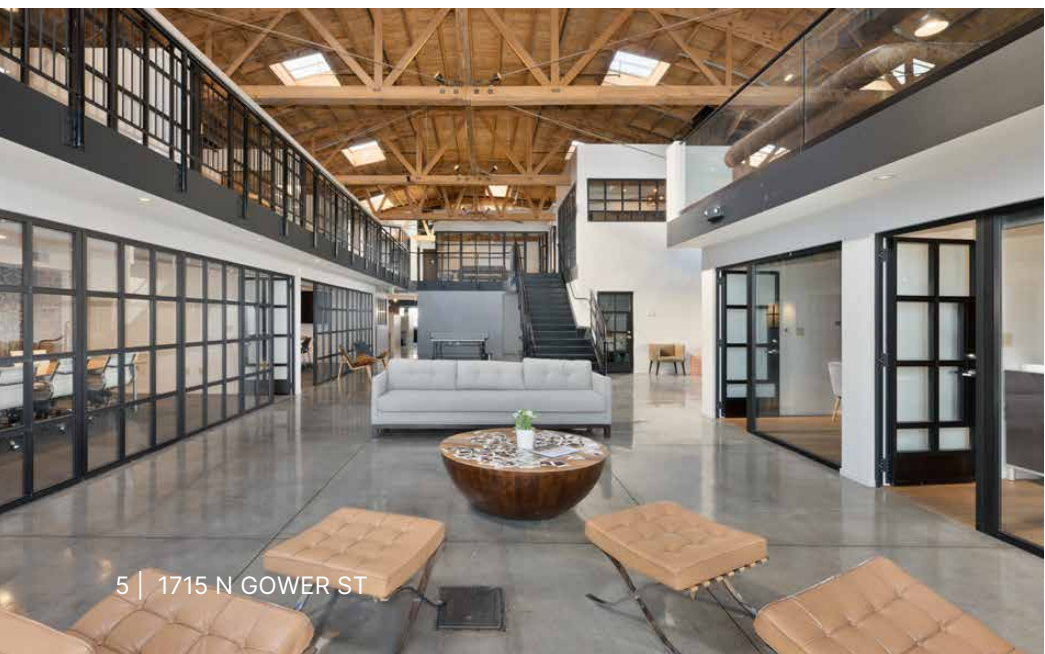


Building Specs:

- Large Open space
- Mezzanine Lounge
- 17 Private offices
- 2 Large Conference Rooms
- 3 private restrooms
- Bullpen
- Reception desk
- Server Room with Dedicated mini-splits
- Multiple storage and janitorial closets
- Basement Storage Below Building
- Handicap elevator from parking lot to ground floor space

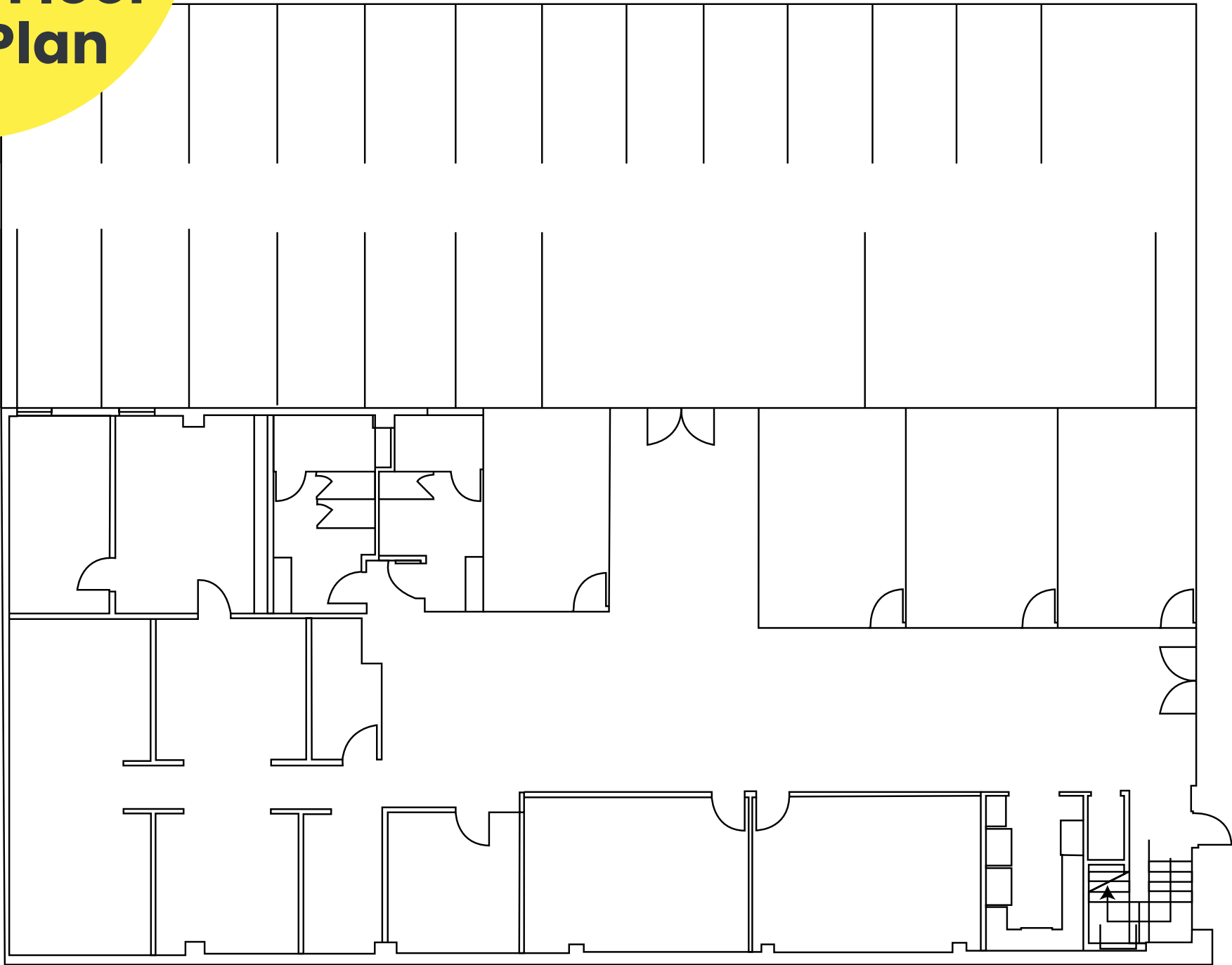


1st Floor

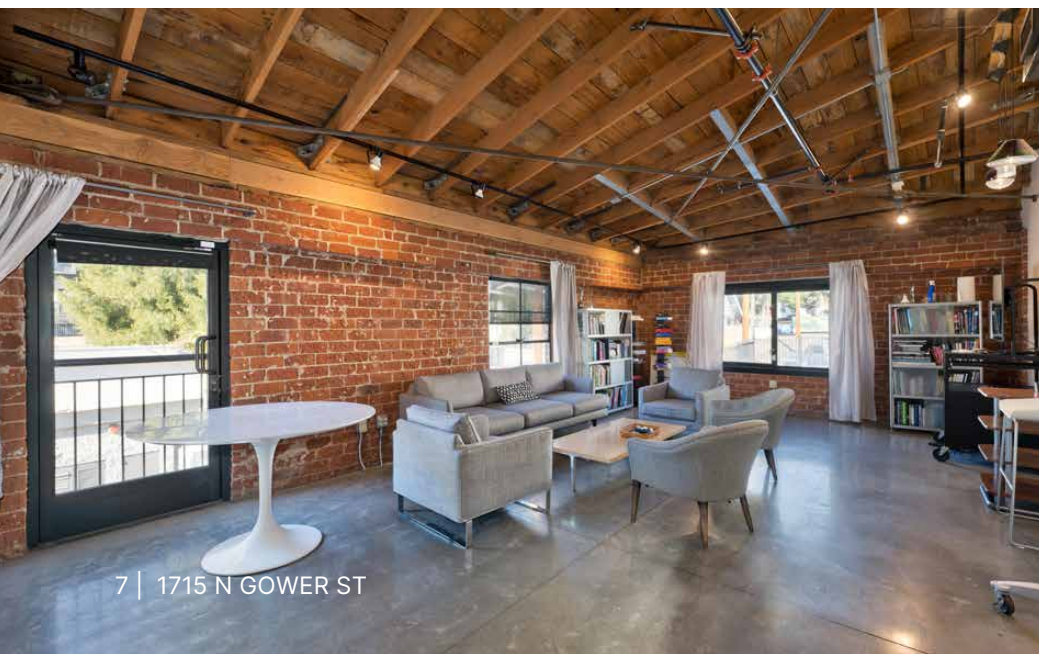


5 | 1715 N GOWER ST

1ST Floor Plan



2nd Floor

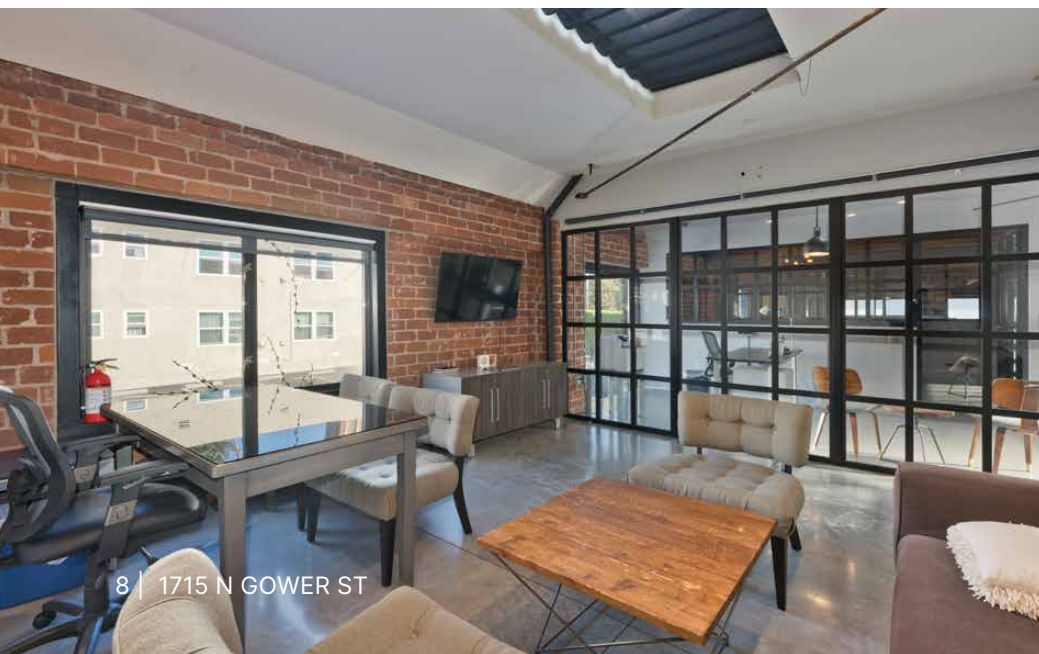


7 | 1715 N GOWER ST

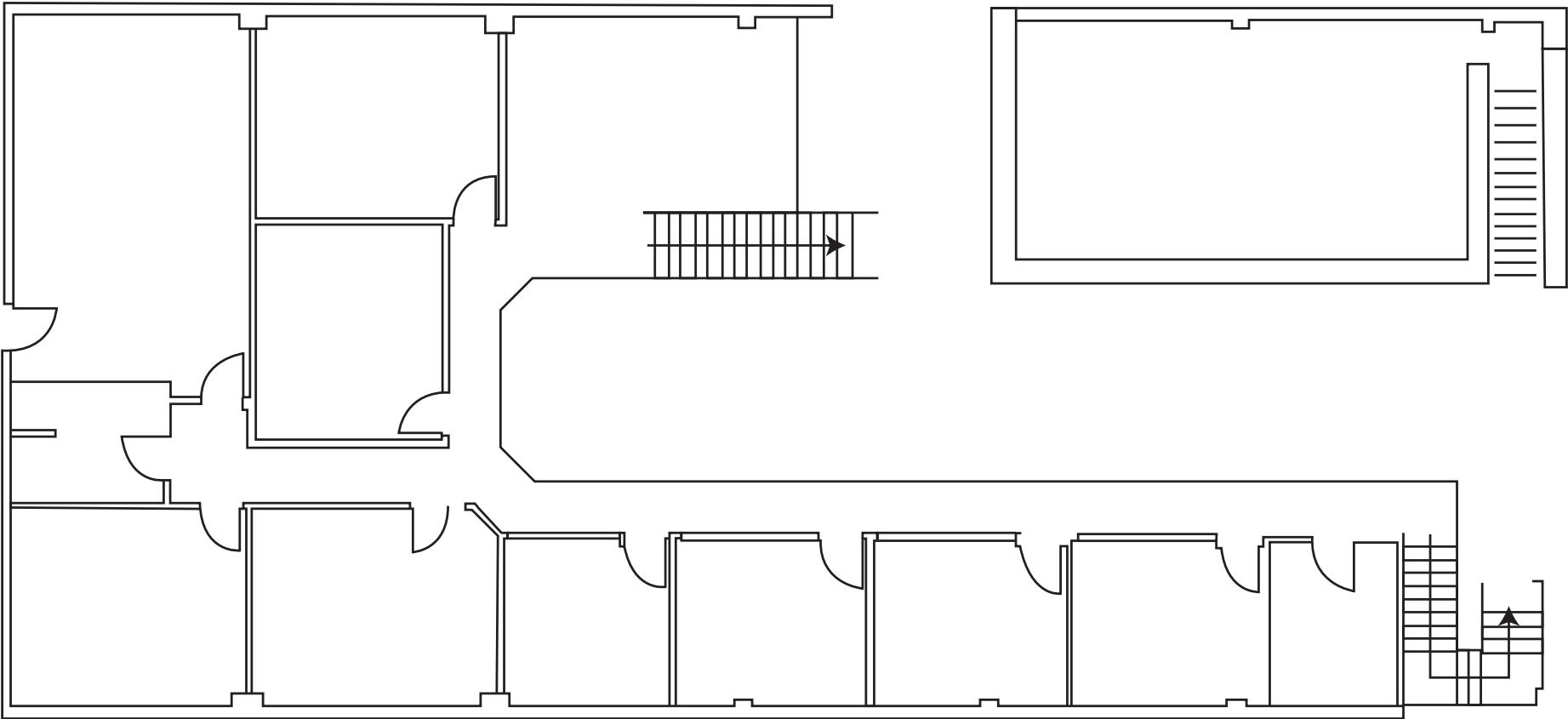


NAICapital
COMMERCIAL REAL ESTATE SERVICES, WORLDWIDE

2nd Floor

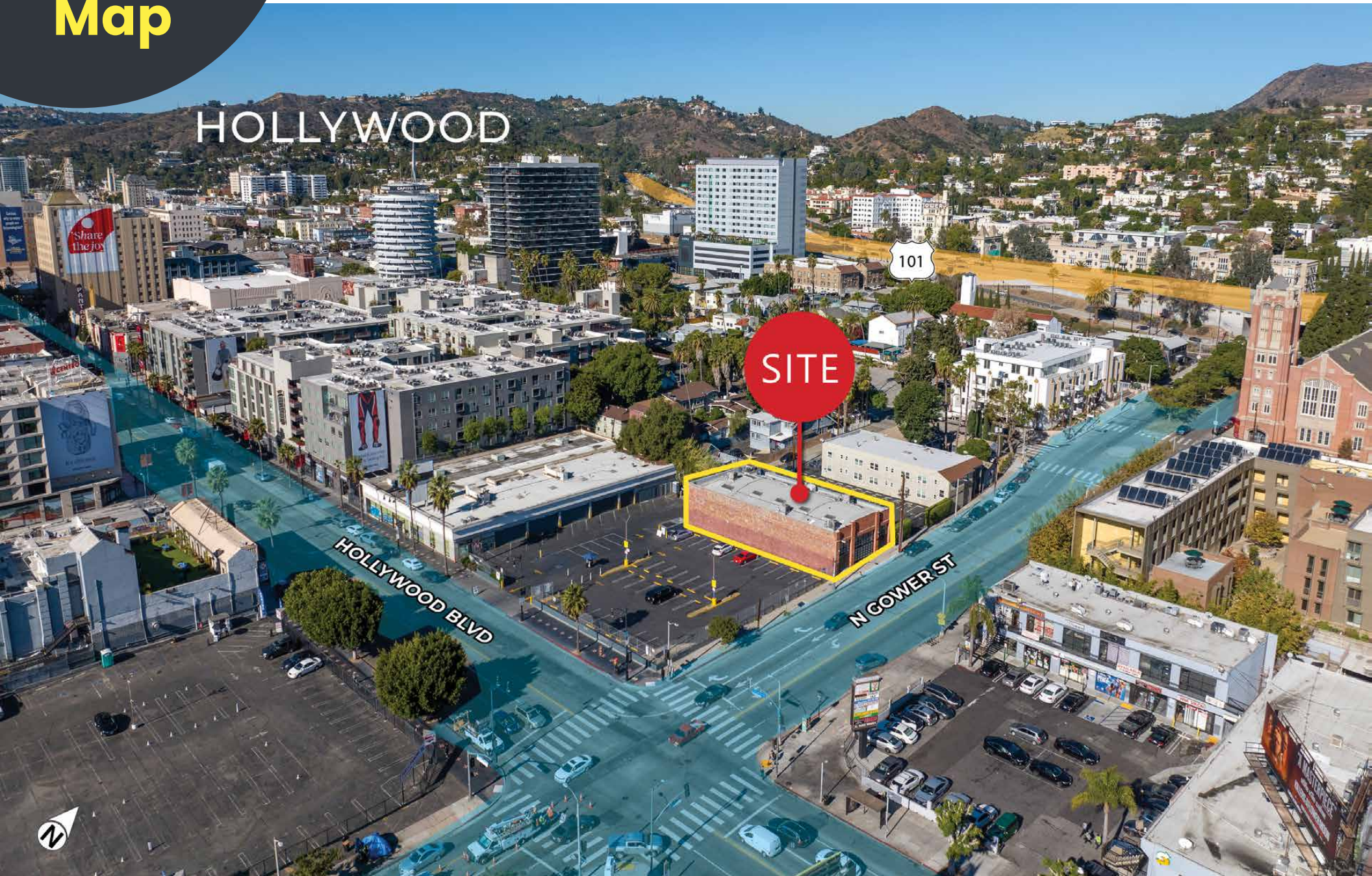


2ND Floor Plan



Retail Map

HOLLYWOOD



10 | 1715 N GOWER ST

Contact Info

JARED SWEDELSON

Vice President
d: 818-742-1632
m: 818-644-7597
jswedelson@naicapital.com
Cal DRE Lic #02105146

NAI CAPITAL - WEST LOS ANGELES

11835 W. Olympic Blvd., Suite 700E
Los Angeles, CA 90064
d: 310-806-6100
f: 310-806-6101
www.naicapital.com

No warranty, express or implied, is made as to the accuracy of the information contained herein. This information is submitted subject to errors, omissions, change of price, rental or other conditions, withdrawal without notice, and is subject to any special listing conditions imposed by our principals. Cooperating brokers, buyers, tenants and other parties who receive this document should not rely on it, but should use it as a starting point of analysis, and should independently confirm the accuracy of the information contained herein through a due diligence review of the books, records, files and documents that constitute reliable sources of the information described herein. NAI Capital Cal DRE #02130474

NAI Capital
COMMERCIAL REAL ESTATE SERVICES, WORLDWIDE