

FOR LEASE - WAREHOUSE/RETAIL SPACE

NAI Capital
COMMERCIAL REAL ESTATE SERVICES, WORLDWIDE



1712 N HUDSON AVENUE, LOS ANGELES

FOR LEASE WAREHOUSE/RETAIL SPACE IN HOLLYWOOD



Jared Swedelson
Vice President
d: 818-742-1632
m: 818-644-7597
jswedelson@naicapital.com
Cal DRE Lic #02105146

NAI Capital - West LA
11835 W. Olympic Blvd. Suite 700E
West Los Angeles, CA 90064
310.806.6100
www.naicapital.com

Lease Rate: \$2.25/SF NNN

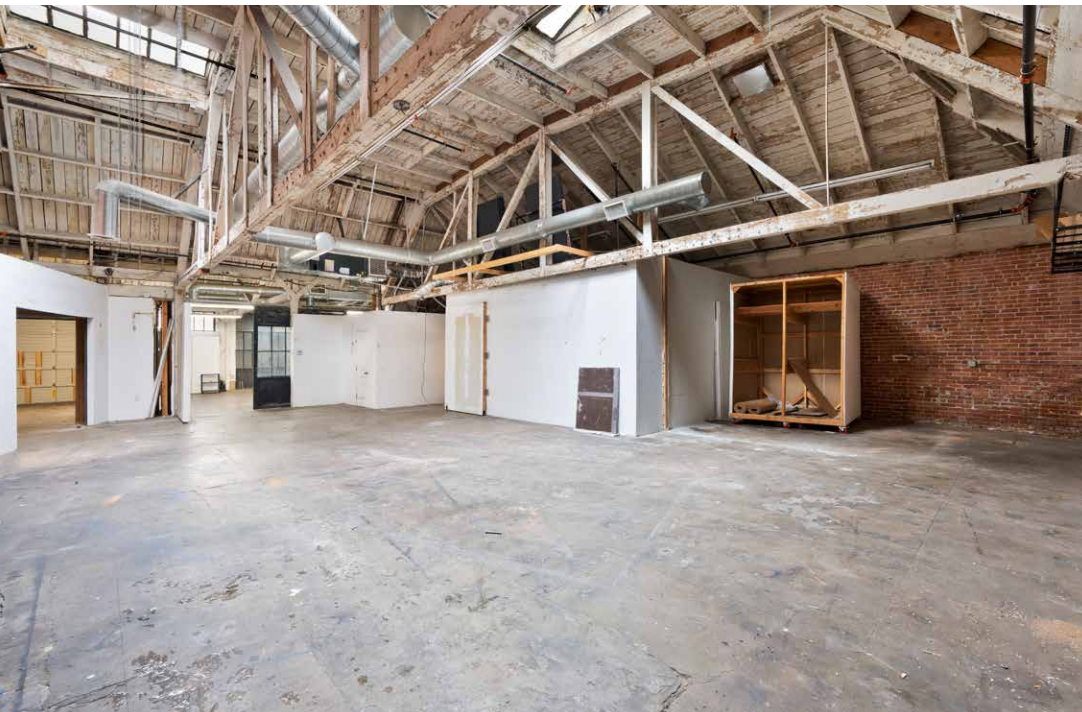
Building Size: 4,000 SF

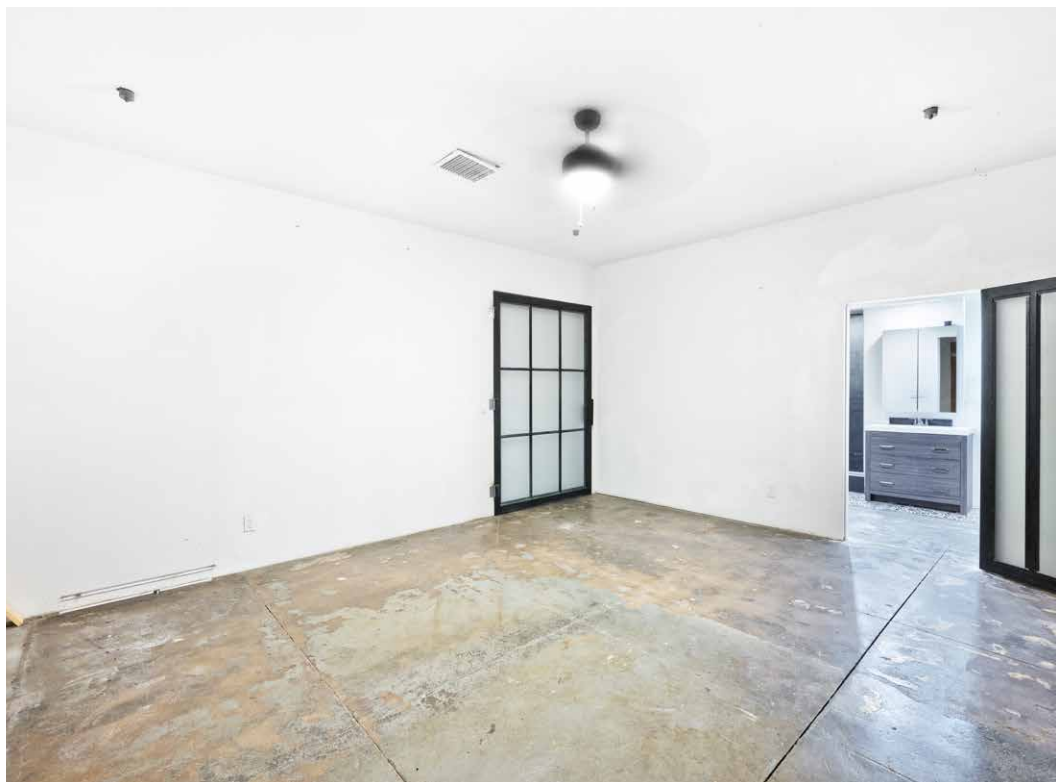
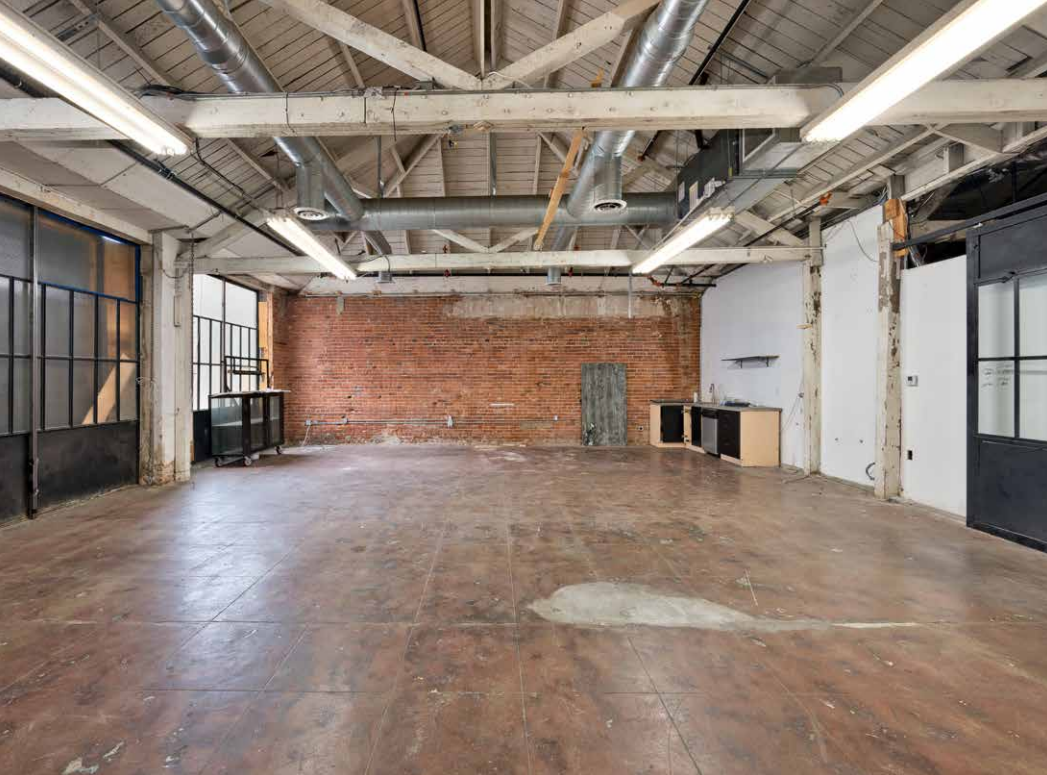
Property Description

We are pleased to present a rare commercial warehouse for lease located on the side street of Hudson, just off Hollywood Blvd., and Adjacent to the new Whisky hotel being developed. This exceptional property features pitched ceilings, natural light, a roll-up door, original red brick walls, a renovated restroom, and additional off-site gated parking. With its versatile layout and charming aesthetics, it presents an excellent opportunity for a uses like a furniture showroom, art gallery, gym, event space or a range of other uses.

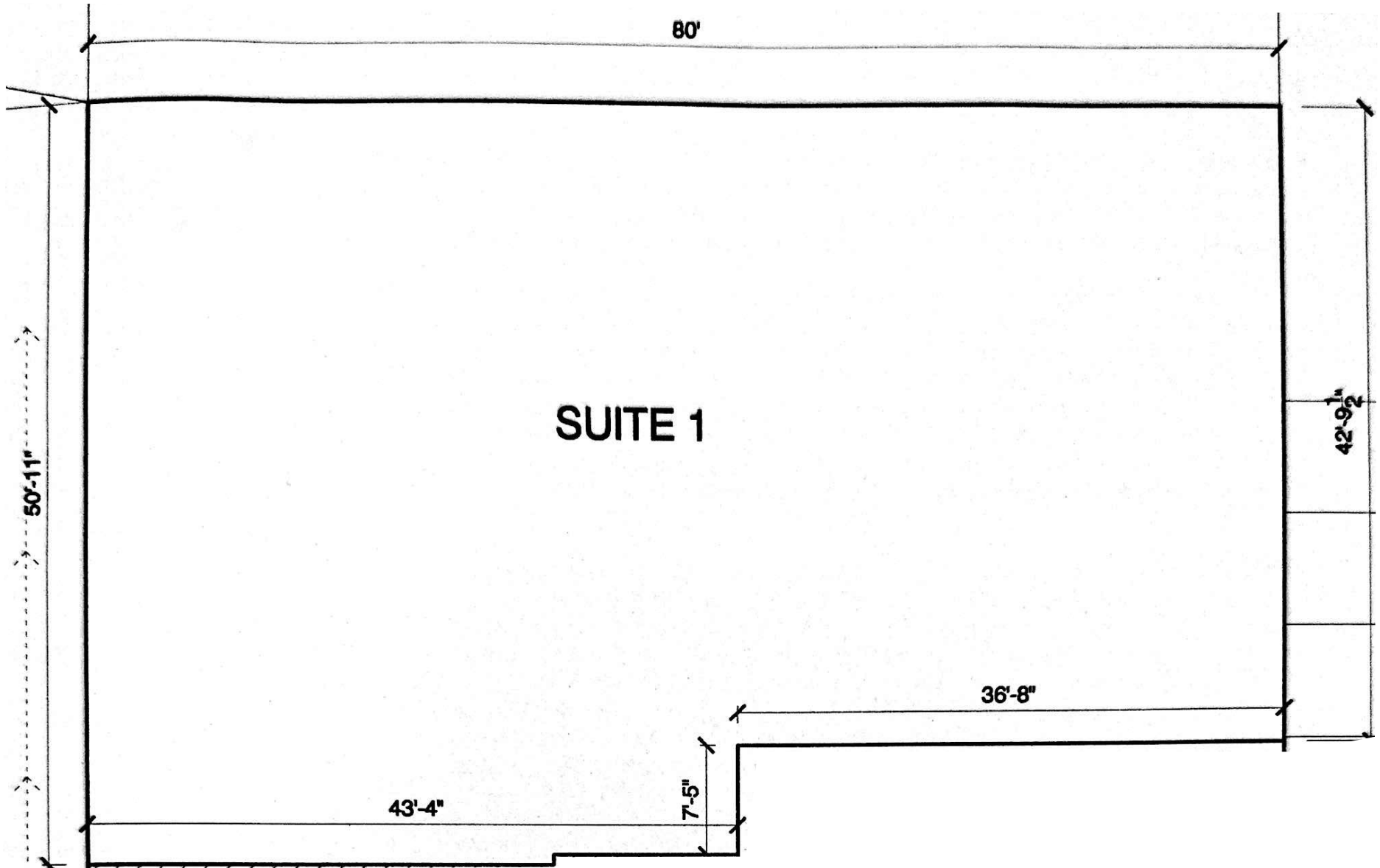
Key Highlights

- High truss ceilings
- Roll up door
- Skylights
- Open layout





FLOOR PLAN





CONTACT INFORMATION

Jared Swedelson

Vice President

818.644.7597

jswedelson@naicapital.com

Cal DRE Lic #02105146

NAI Capital Commercial

11835 W. Olympic Blvd. Suite 700E

West Los Angeles, CA 90064

310.806.6100

www.naicapital.com

No warranty, express or implied, is made as to the accuracy of the information contained herein. This information is submitted subject to errors, omissions, change of price, rental or other conditions, withdrawal without notice, and is subject to any special listing conditions imposed by our principals. Cooperating brokers, buyers, tenants and other parties who receive this document should not rely on it, but should use it as a starting point of analysis, and should independently confirm the accuracy of the information contained herein through a due diligence review of the books, records, files and documents that constitute reliable sources of the information described herein. NAI Capital Cal DRE #02130474