

FOR LEASE - RESTAURANT/BAR

NAI Capital
COMMERCIAL REAL ESTATE SERVICES, WORLDWIDE

Office & Residential
SPACES
777-9111



1624 N CAHUENGA, LOS ANGELES

RESTAURANT/BAR IN DOWNTOWN HOLLYWOOD



Jared Swedelson
Vice President
d: 818-742-1632
m: 818-644-7597
jswedelson@naicapital.com
Cal DRE Lic #02105146

NAI Capital - West LA
11835 W. Olympic Blvd. Suite 700E
West Los Angeles, CA 90064
310.806.6100
www.naicapital.com



Lease Rate: \$5/SF NNN

Building Size: 2,400 SF

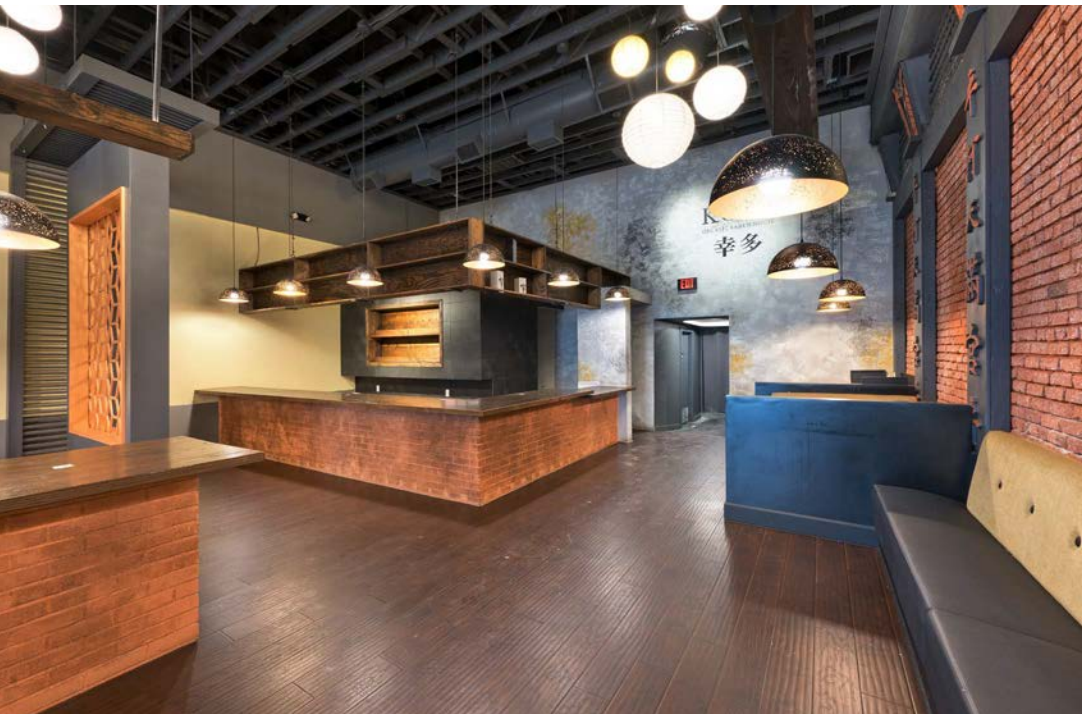
Property Description

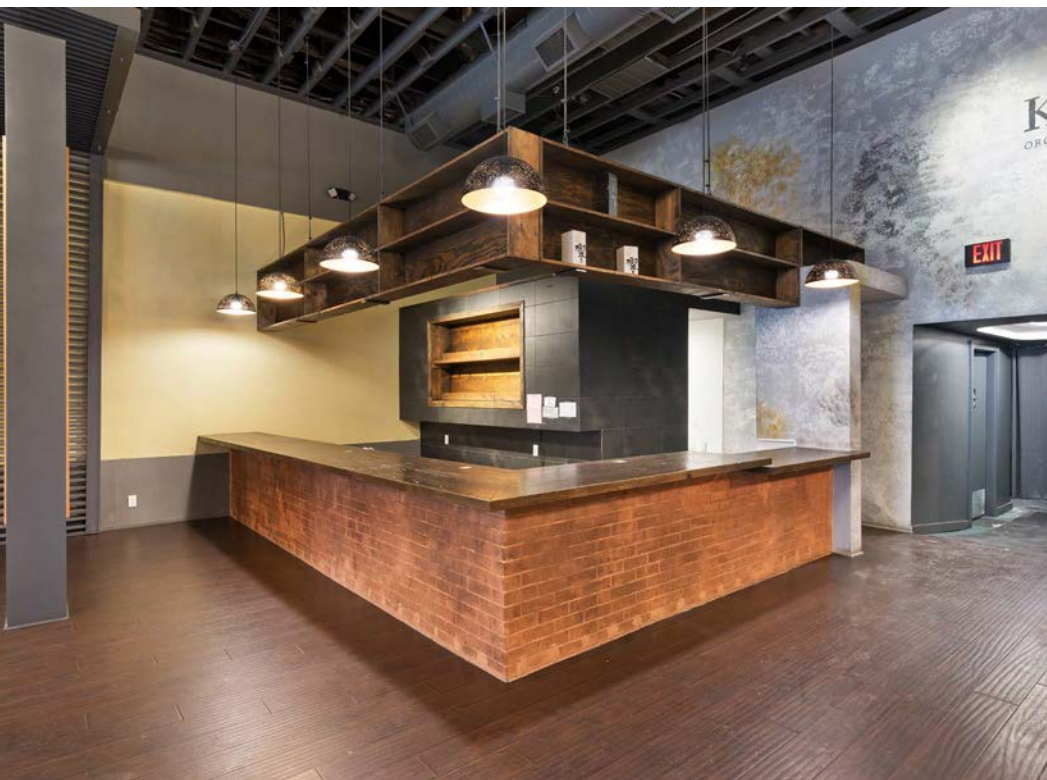
This is an extraordinary opportunity to lease a fully-built out bar/restaurant situated at the vibrant epicenter of Hollywood's nightlife. Nestled on Cahuenga, this remarkable space stands alongside renowned establishments such as The Room, Beauty and Essex, Highlight Room, Mother Wolf, and the newly acclaimed Dream and Tommy Hotel. With no Key Money required, this venue boasts a state-of-the-art commercial kitchen and a coveted liquor permit under its CUP. Moreover, its captivating art deco façade is complemented by an additional patio/alley in the back that can be capitalized on the by the next operator.

(Type 47 CUP in Place)

Key Highlights

- No Key Money
- Commercial kitchen (grease trap + hood)
- CUP that allows for type 47 Liquor
- Enclosed Patio in the rear
- Epicenter of Hollywood nightlife scene





Enclosed Patio



RETAIL MAP





COMMERCIAL REAL ESTATE SERVICES, WORLDWIDE

CONTACT INFORMATION

Jared Swedelson

Vice President

818.644.7597

jswedelson@naicapital.com

Cal DRE Lic #02105146

NAI Capital Commercial

11835 W. Olympic Blvd. Suite 700E

West Los Angeles, CA 90064

310.806.6100

www.naicapital.com

No warranty, express or implied, is made as to the accuracy of the information contained herein. This information is submitted subject to errors, omissions, change of price, rental or other conditions, withdrawal without notice, and is subject to any special listing conditions imposed by our principals. Cooperating brokers, buyers, tenants and other parties who receive this document should not rely on it, but should use it as a starting point of analysis, and should independently confirm the accuracy of the information contained herein through a due diligence review of the books, records, files and documents that constitute reliable sources of the information described herein. NAI Capital Cal DRE #02130474