

# OFFICE/MEDICAL SPACE FOR LEASE

16550 Ventura Blvd.  
RUBIO PLAZA WEST

Encino, CA



## AVAILABLE SPACE:

Suite #325 **Approximately 985 SF**

Suite #318 **Approximately 4,462 SF – Divisible**  
Current Layout is Office, but may be Converted to Medical Use.

## RENTAL RATE:

\$2.85/SF FSG - Medical Use/Space

\$2.25/SF FSG – Office Space

**TERM:** 2 - 10 Years

**PARKING:** \$75.00/Mo Surface Unreserved  
Valet Parking for Visitors

## FEATURES:

- Park-like courtyard with water features
- High-visibility medical office in the heart of Encino
- Close proximity to the Encino Hospital, Sherman Oaks Hospital and 101/405 Freeway
- On-site Pharmacy

**NAI Capital**

Commercial Real Estate Services, Worldwide.

No warranty, express or implied, is made as to the accuracy of the information contained herein. This information is submitted subject to errors, omissions, change of price, rental or other conditions, withdrawal without notice, and is subject to any special listing conditions imposed by our principals. Cooperating brokers, buyers, tenants and other parties who receive this document should not rely on it, but should use it as a starting point of analysis, and should independently confirm the accuracy of the information contained herein through a due diligence review of the books, records, files and documents that constitute reliable sources of the information described herein.

For more information, please contact:

**Jeremy S. Barbakow**  
Senior Vice President  
Tel 818 933 5976  
jbarbakow@naicapital.com

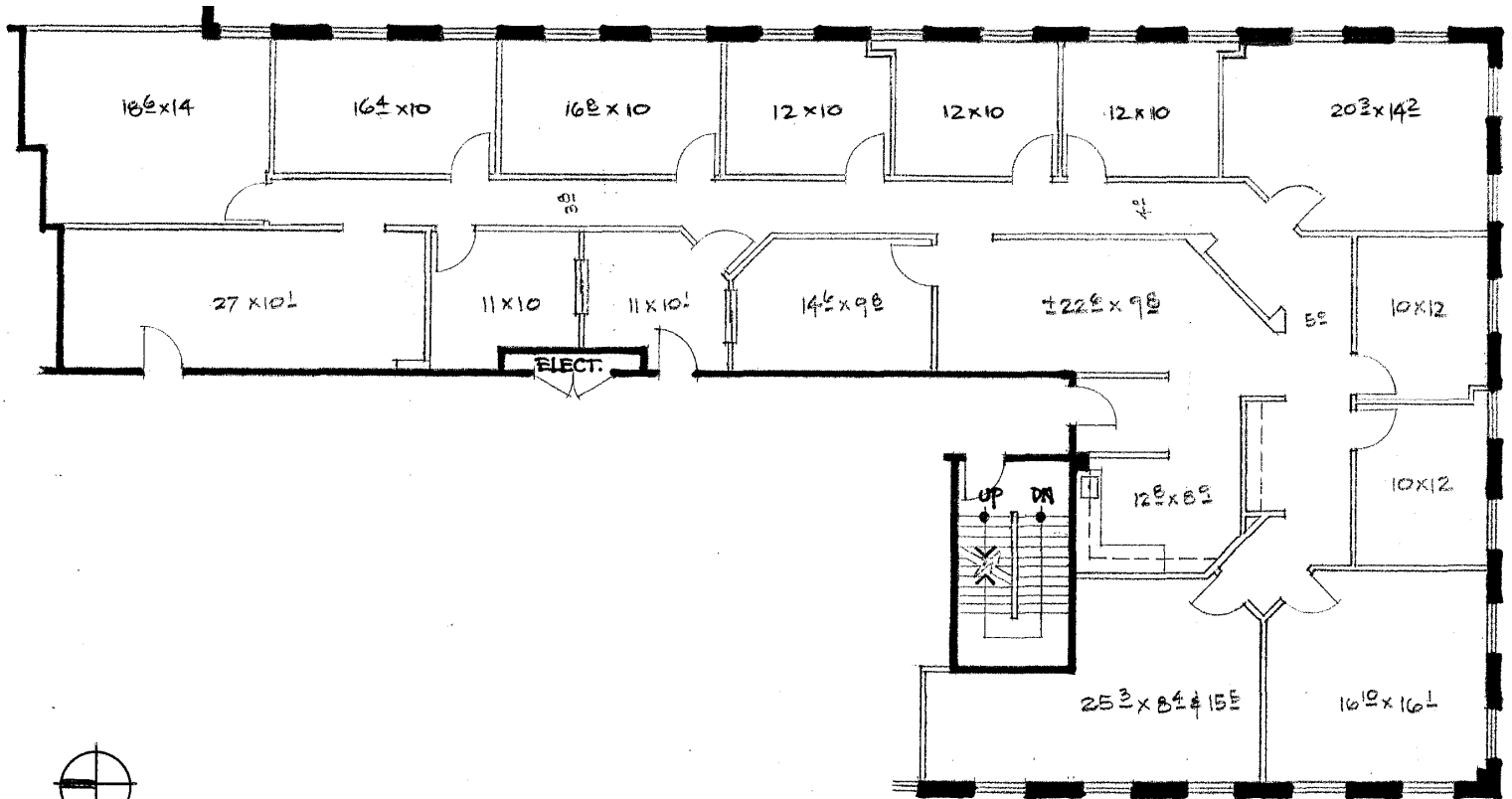
16001 Ventura Blvd.  
Suite 200  
Encino, CA 91436  
Fax 818 905 2425  
DRE#01242606

# 16550 Ventura Blvd.

## RUBIO PLAZA WEST

### Encino, CA

## Floor Plan: Suite 318



# NAI Capital

Commercial Real Estate Services, Worldwide.

No warranty, express or implied, is made as to the accuracy of the information contained herein. This information is submitted subject to errors, omissions, change of price, rental or other conditions, withdrawal without notice, and is subject to any special listing conditions imposed by our principals. Cooperating brokers, buyers, tenants and other parties who receive this document should not rely on it, but should use it as a starting point of analysis, and should independently confirm the accuracy of the information contained herein through a due diligence review of the books, records, files and documents that constitute reliable sources of the information described herein.

For more information, please contact your listing agents:

**Jeremy S. Barbakow**  
Senior Vice President  
Tel 818 933 5976  
jbarbakow@naicapital.com

16001 Ventura Blvd.  
Suite 200  
Encino, CA 91436  
Fax 818 905 2425