

MEDICAL SPACE FOR LEASE

16260 Ventura Blvd.
ENCINO MEDICAL TOWER

Encino, CA



AVAILABLE SPACE:

- Suite #210 **Approximately 4,300 SF – Divisible**
Fully Built-out Accredited Surgical Center with 2 Operating Rooms and Recovery Area.
- Suite #430 **Approximately 1,050 SF – Office of the Building**
Spec Plan on Reverse
- Suite #525 **Approximately 860 SF**
Former Dental Office
- Suite #720 **Approximately 1,630 SF**

RENTAL RATE:

Upper Levels: \$2.85 per SF, FSG
Suite #210 \$3.15 per SF, FSG

TERM: 3 – 10 Years

FEATURES:

- Across the Street From Encino Hospital
- Class "A" Medical Building & Ownership
- Building Management on Premises
- Beautifully Upgraded Lobby and Corridors
- Pharmacy on Ground Floor

PARKING: \$80 Unreserved, \$120 Reserved

NAI Capital

Commercial Real Estate Services, Worldwide.

No warranty, express or implied, is made as to the accuracy of the information contained herein. This information is submitted subject to errors, omissions, change of price, rental or other conditions, withdrawal without notice, and is subject to any special listing conditions imposed by our principals. Cooperating brokers, buyers, tenants and other parties who receive this document should not rely on it, but should use it as a starting point of analysis, and should independently confirm the accuracy of the information contained herein through a due diligence review of the books, records, files and documents that constitute reliable sources of the information described herein.

For more information, please contact:

Jeremy S. Barbakow
Senior Vice President
Tel 818 933 5976
jbarbakow@naicapital.com

16001 Ventura Blvd.
Suite 200
Encino, CA 91436
Fax 818 905 2425
DRE#01242606

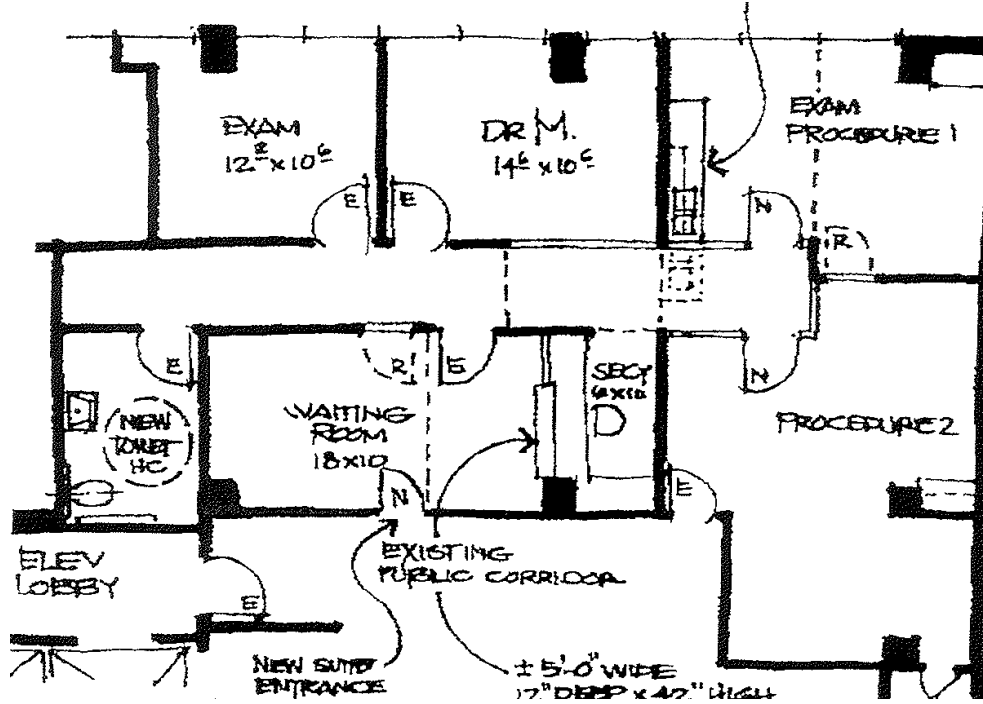
16260 Ventura Blvd.

ENCINO MEDICAL TOWER

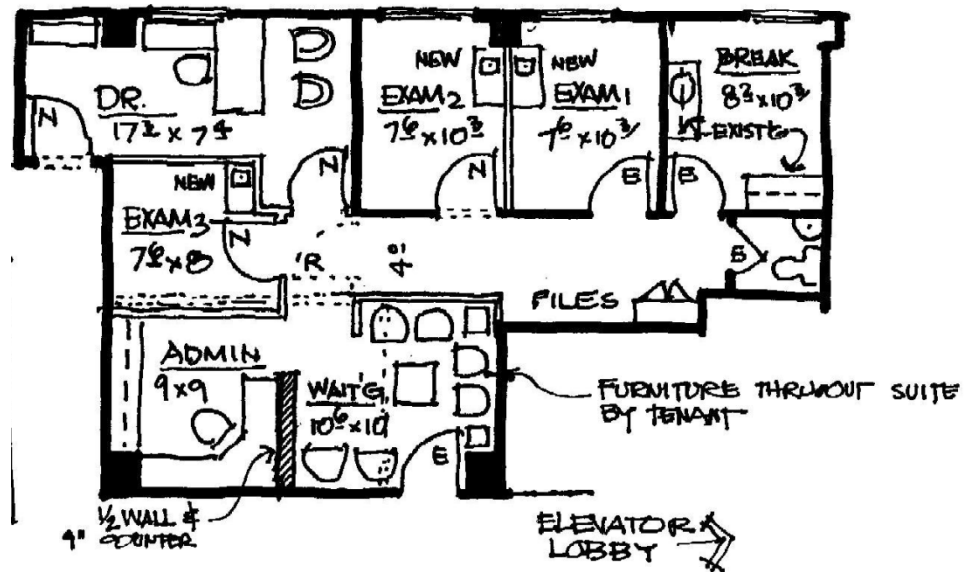
Encino, CA

Floor Plans

Suite# 720



Suite# 430 – Spec Plan



Commercial Real Estate Services, Worldwide.

No warranty, express or implied, is made as to the accuracy of the information contained herein. This information is submitted subject to errors, omissions, change of price, rental or other conditions, withdrawal without notice, and is subject to any special listing conditions imposed by our principals. Cooperating brokers, buyers, tenants and other parties who receive this document should not rely on it, but should use it as a starting point of analysis, and should independently confirm the accuracy of the information contained herein through a due diligence review of the books, records, files and documents that constitute reliable sources of the information described herein.

For more information, please contact your listing agents:

Jeremy S. Barbakow
Senior Vice President
Tel 818 933 5976
jbarbakow@naicapital.com

16001 Ventura Blvd.
Suite 200
Encino, CA 91436
Fax 818 905 2425