

OFFICE SPACE FOR LEASE

15456 Ventura Blvd.

Sherman Oaks, CA



AVAILABLE SPACE:

- Suite #204 **Approximately 1,120 SF**
Highly Improved Space, 2 Windowed Offices, Large Open Area with Built-in Cubicles, Storage, Wood Flooring Throughout.
- Suite #301 **Approximately 1,683 SF**
- Suite #302 **Approximately 1,661 SF (contiguous to #304 for a total of 3,316 SF)**
- Suite #304 **Approximately 1,655 SF**
3 Windowed Offices, 2 Interior Offices, Open Area, Kitchen, Storage.

RENTAL RATE: \$2.10 per SF, FSG

PARKING: Covered Spaces @
\$95.00/month

NAI Capital

Commercial Real Estate Services, Worldwide.

No warranty, express or implied, is made as to the accuracy of the information contained herein. This information is submitted subject to errors, omissions, change of price, rental or other conditions, withdrawal without notice, and is subject to any special listing conditions imposed by our principals. Cooperating brokers, buyers, tenants and other parties who receive this document should not rely on it, but should use it as a starting point of analysis, and should independently confirm the accuracy of the information contained herein through a due diligence review of the books, records, files and documents that constitute reliable sources of the information described herein.

For more information, please contact:

Jeremy S. Barbakow
Senior Vice President
Direct: 818 933 5976
jbarbakow@naicapital.com
DRE# 01242606

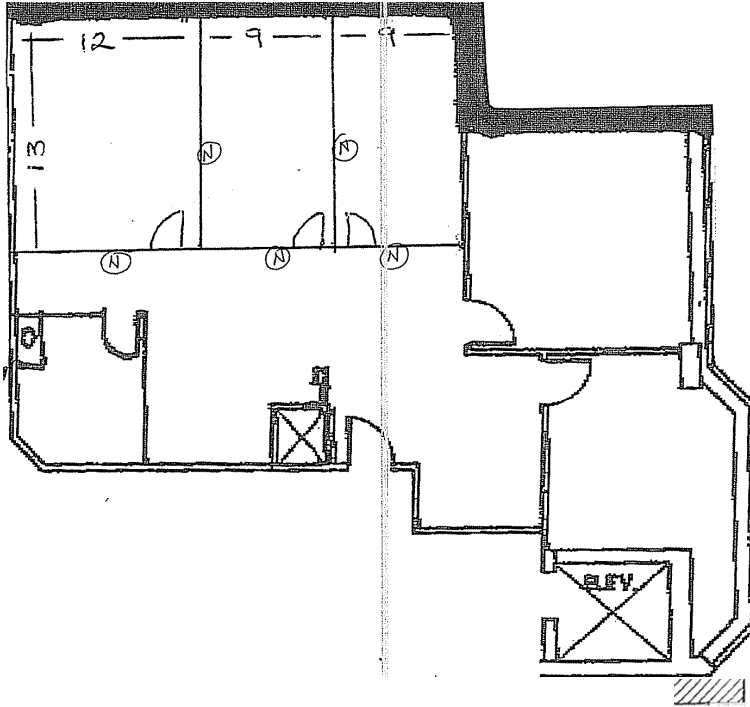
16001 Ventura Blvd.
Suite 200
Encino, CA 91436
eFax 818 647 0220

15456 Ventura Blvd.

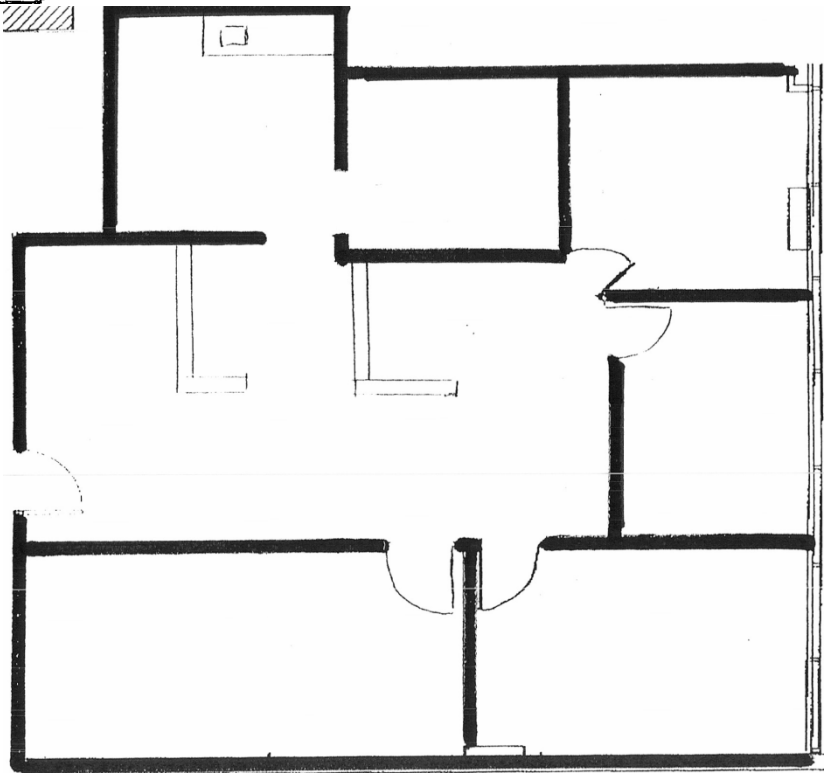
Sherman Oaks, CA

Floor Plans

#301



#304



NAI Capital

Commercial Real Estate Services, Worldwide.

No warranty, express or implied, is made as to the accuracy of the information contained herein. This information is submitted subject to errors, omissions, change of price, rental or other conditions, withdrawal without notice, and is subject to any special listing conditions imposed by our principals. Cooperating brokers, buyers, tenants and other parties who receive this document should not rely on it, but should use it as a starting point of analysis, and should independently confirm the accuracy of the information contained herein through a due diligence review of the books, records, files and documents that constitute reliable sources of the information described herein.

For more information, please contact:

Jeremy S. Barbakow
Senior Vice President
Direct 818 933 5976
jbarbakow@naicapital.com

16001 Ventura Blvd.
Suite 200
Encino, CA 91436
eFax 818 647 0220