

**24922 ANZA DRIVE, UNIT F
SANTA CLARITA, CA 91355**



FOR LEASE - 11,660 SF

EXCLUSIVELY LISTED BY:

Chris Jackson
CEO
d: 818-933-2368
cjackson@naicapital.com
Cal DRE Lic #01255538

Todd Lorber
Executive Vice President
d: 818-933-2376
tlorber@naicapital.com
Cal DRE Lic #01014637

Eric Seidenglanz
Vice President
d: 818-815-2426
eseidenglanz@naicapital.com
Cal DRE Lic #01975684

NAI Capital - Encino
15821 Centura Blvd., Suite 320E
Los Angeles, CA 91436
d: 818-905-2400
www.naicapital.com

NAI Capital
COMMERCIAL REAL ESTATE SERVICES, WORLDWIDE

PROPERTY HIGHLIGHTS

24922 ANZA DRIVE, UNIT F, VALENCIA CA 91355

Monthly Rent: \$11,193.60

Lease Rate /SF: \$0.95

Operating Expenses: \$4,547.40

Operating Expenses /SF: \$0.39

Unit Size: ± 11,660 SF

Office SF: ± 3,400 SF

Clear Height: 22'

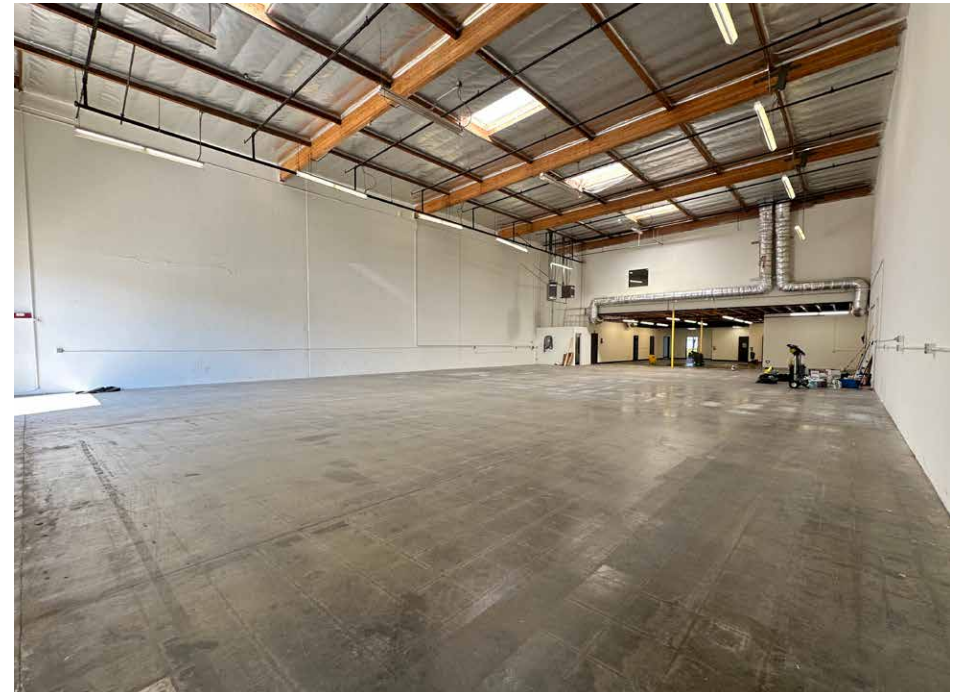
GL Doors: One (1) 12'x14'

Power: 200 Amps : 277/480 Volt : 3 Phase : 4 Wire

Sprinklered: Yes

Possession: Thirty (30) Days

To Show: Call Agent



LEASE
RATE/SF
\$0.95



CLEAR
HEIGHT
22'



EXCELLENT
LOADING



HEAVY
POWER

PROPERTY PHOTOS

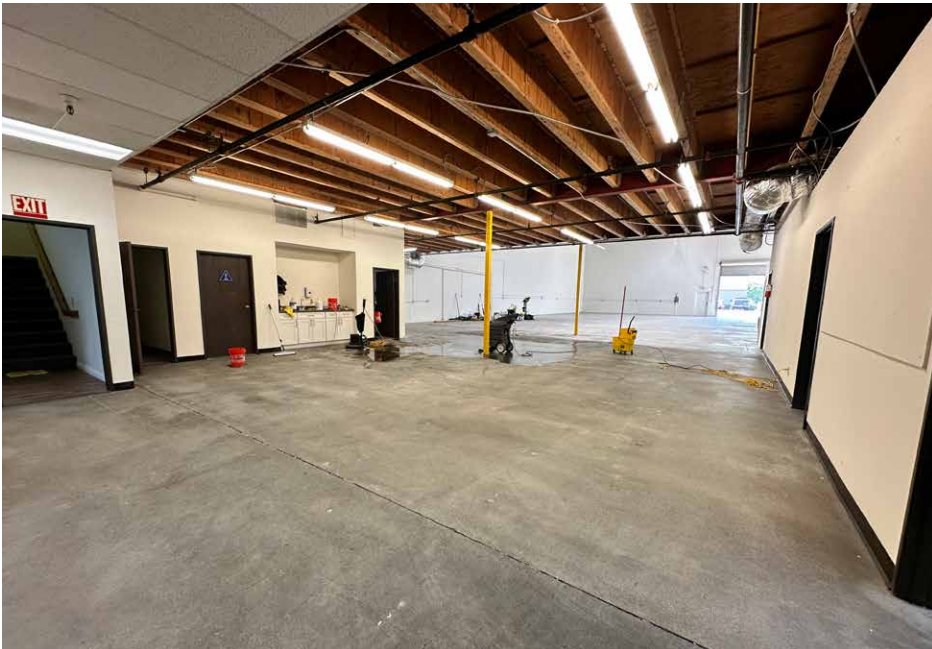


PROPERTY PHOTOS

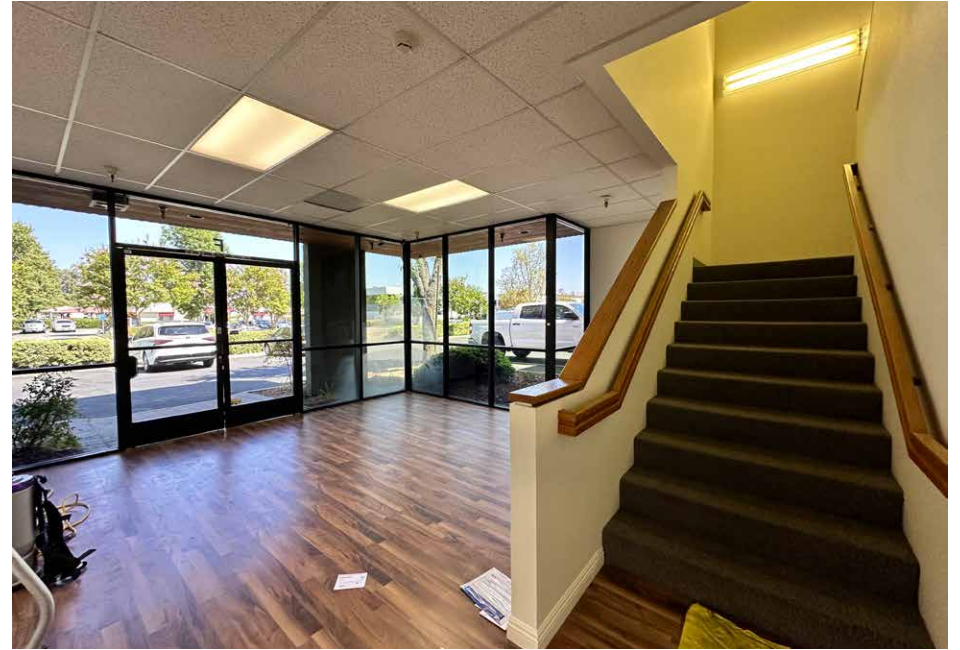


4 24922 ANZA DRIVE, UNIT F, VALENCIA CA 91355

PROPERTY PHOTOS



PROPERTY PHOTOS



AERIAL MAP



24922 ANZA DRIVE, UNIT F SANTA CLARITA, CA 91355

24922

GENESIS

FOR LEASE - 11,660 SF

No warranty, express or implied, is made as to the accuracy of the information contained herein. This information is submitted subject to errors, omissions, change of price, rental or other conditions, withdrawal without notice, and is subject to any special listing conditions imposed by our principals. Cooperating brokers, buyers, tenants and other parties who receive this document should not rely on it, but should use it as a starting point of analysis, and should independently confirm the accuracy of the information contained herein through a due diligence review of the books, records, files and documents that constitute reliable sources of the information described herein. Logos are for identification purposes only and may be trademarks of their respective companies. NAI Capital, Inc. Cal DRE Lic. #02130474.

EXCLUSIVELY LISTED BY:

Chris Jackson
CEO
d: 818-933-2368
cjackson@naicapital.com
Cal DRE Lic #01255538

Todd Lorber
Executive Vice President
d: 818-933-2376
tlorber@naicapital.com
Cal DRE Lic #01014637

Eric Seidenglanz
Vice President
d: 818-815-2426
eseidenglanz@naicapital.com
Cal DRE Lic #01975684

NAI Capital - Encino
15821 Centura Blvd., Suite 320E
Los Angeles, CA 91436
d: 818-905-2400
www.naicapital.com

NAI Capital
COMMERCIAL REAL ESTATE SERVICES, WORLDWIDE