

14737 ARMINTA STREET,
PANORAMA CITY, CA 91402

FOR SALE/LEASE - 8,710 SF



EXCLUSIVELY LISTED BY:

Eric Seidenglanz

Vice President

d: 818-815-2426

eseidenglanz@naicapital.com

Cal DRE Lic #01975684

NAI Capital - Encino

15821 Centura Blvd., Suite 320E

Los Angeles, CA 91436

d: 818-905-2400

www.naicapital.com

NAICapital
COMMERCIAL REAL ESTATE SERVICES, WORLDWIDE

PROPERTY HIGHLIGHTS

14737 ARMINTA STREET, PANORAMA CITY, CA 91402

Sale Price	\$3,499,000.00
Sale Price / SF	\$401.72
Monthly Rent	\$13,500.00
Lease Rate / SF	\$1.55
Unit Size	8,710
Clear Height	10 ½' - 20'
GL Doors	One (11'x10')
Power	400 Amp: Three Phase & 200 Amp: Single Phase
Parking	Private Fenced & Secure
Restrooms	Two Brand New Fully Renovated
Zoning	M1
To Show	Call Agent



LEASE
RATE/SF
\$1.70



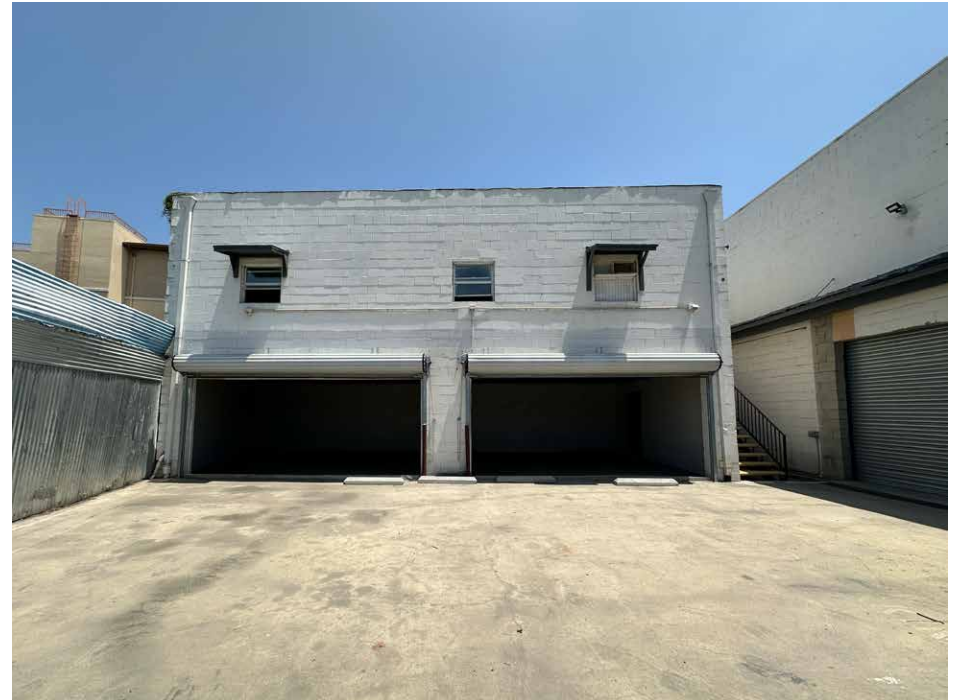
CLEAR
HEIGHT
10 ½' - 20'



POWER
400A 3PH
200A 1PH



LOADING
ONE (1) 11'X10' GROUND LEVEL DOOR



PROPERTY PHOTOS



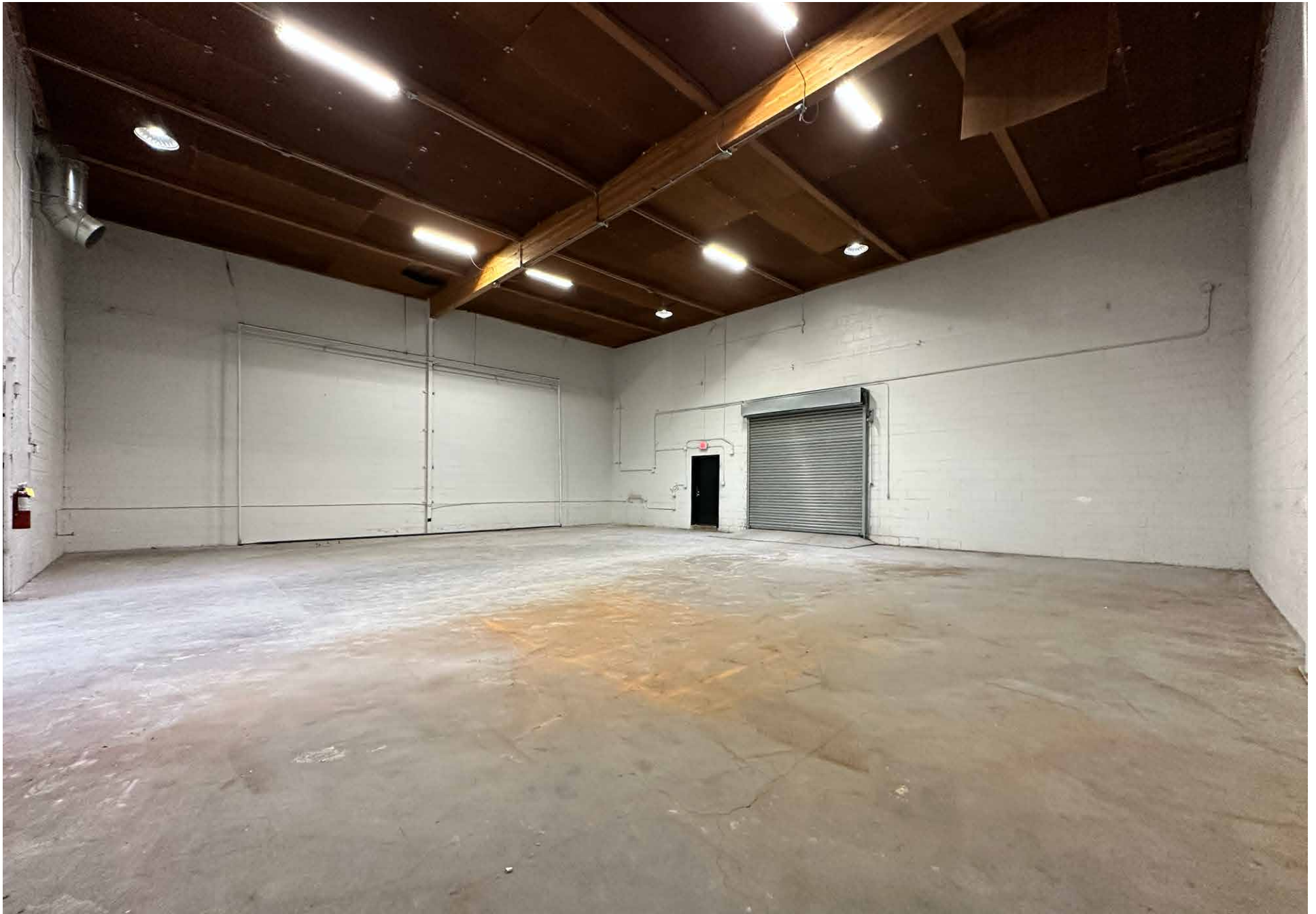
PROPERTY PHOTOS



PROPERTY PHOTOS



PROPERTY PHOTOS



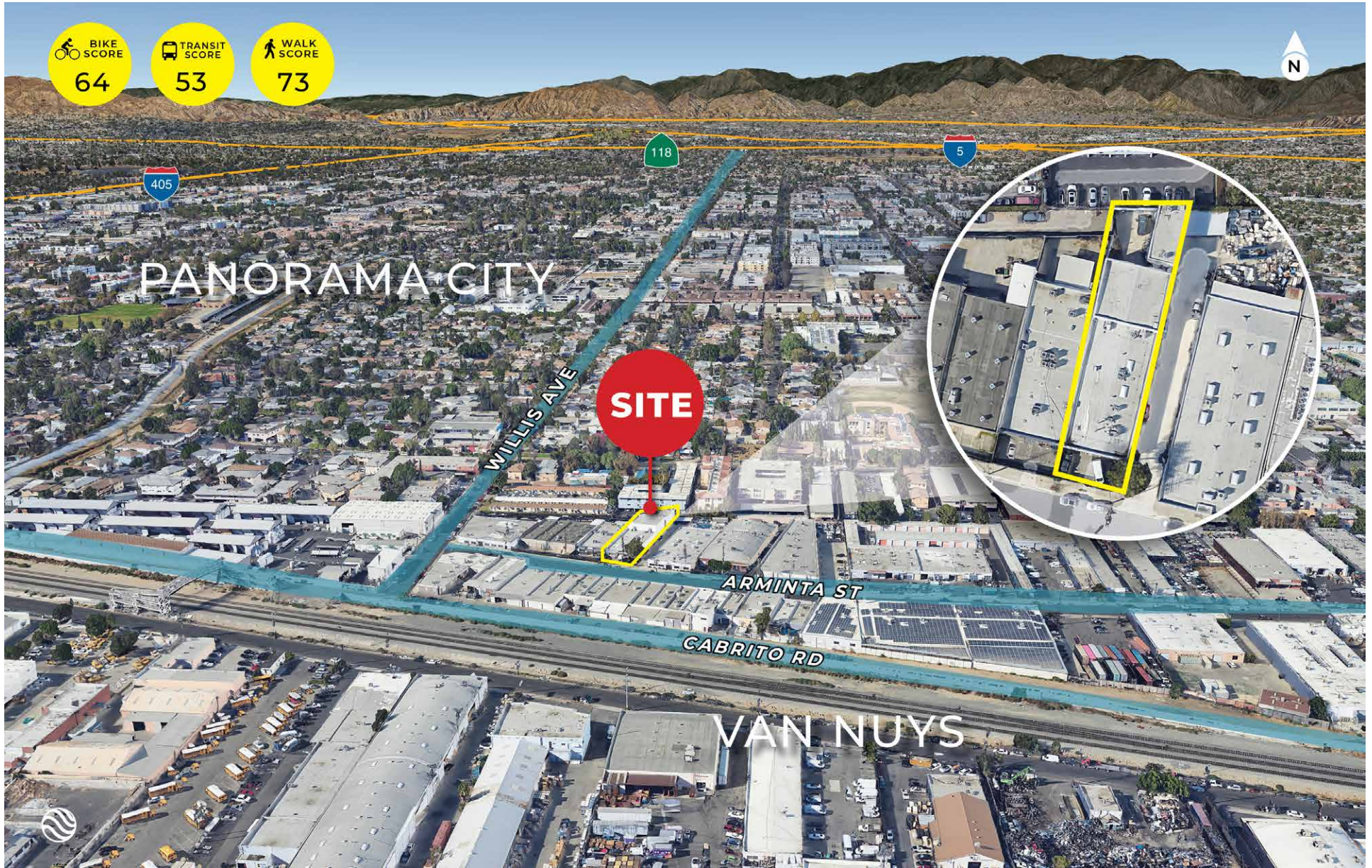
PROPERTY PHOTOS



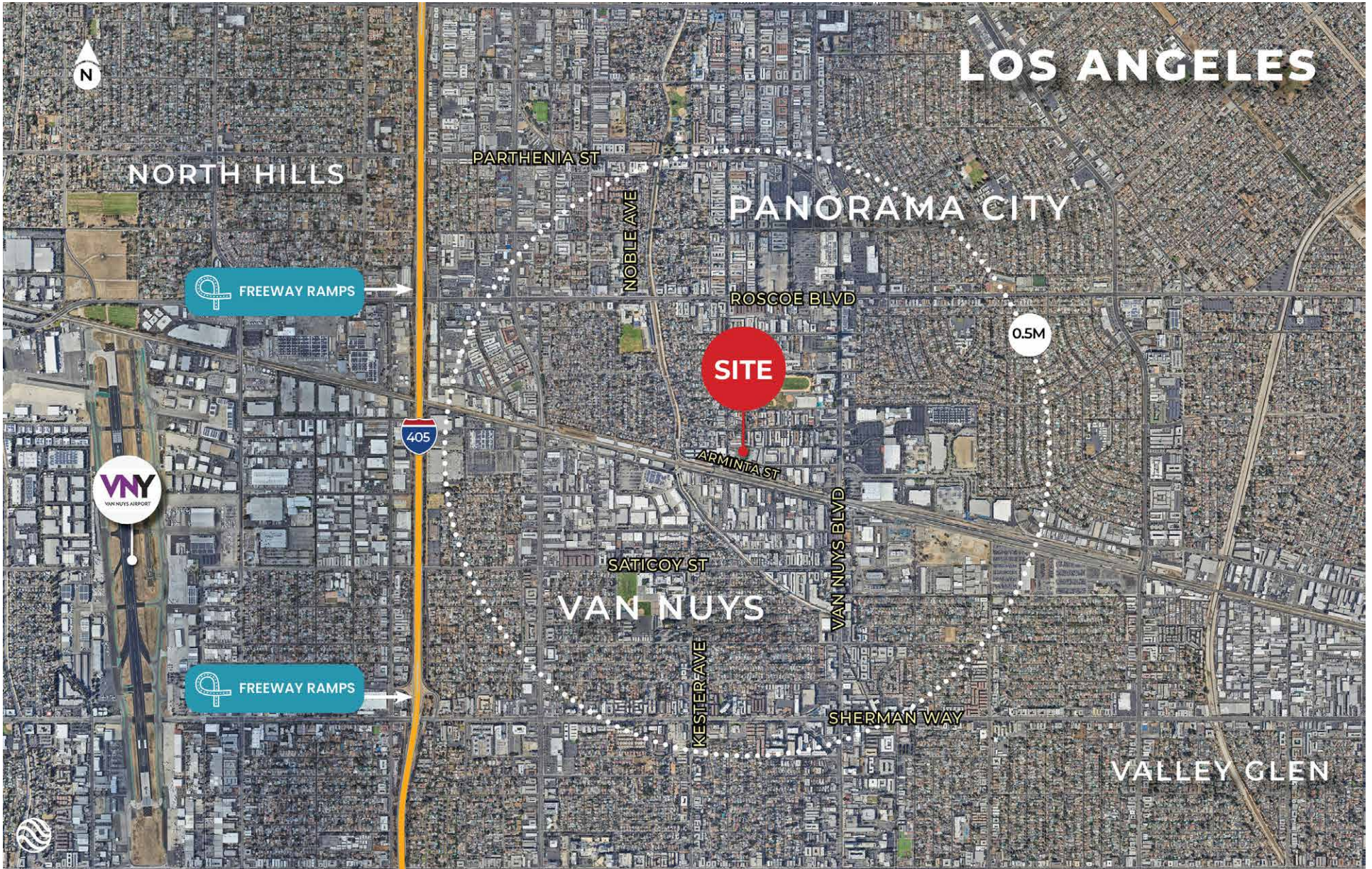
LOCATION MAP



AERIAL MAP



AERIAL MAP



14737 ARMINTA STREET, PANORAMA CITY, CA 91402

FOR SALE/LEASE - 8,710 SF

No warranty, express or implied, is made as to the accuracy of the information contained herein. This information is submitted subject to errors, omissions, change of price, rental or other conditions, withdrawal without notice, and is subject to any special listing conditions imposed by our principals. Cooperating brokers, buyers, tenants and other parties who receive this document should not rely on it, but should use it as a starting point of analysis, and should independently confirm the accuracy of the information contained herein through a due diligence review of the books, records, files and documents that constitute reliable sources of the information described herein. Logos are for identification purposes only and may be trademarks of their respective companies. NAI Capital, Inc. Cal DRE Lic. #02130474.

EXCLUSIVELY LISTED BY:

Eric Seidenglanz

Vice President

d: 818-815-2426

eseidenglanz@naicapital.com

Cal DRE Lic #01975684

NAI Capital - Encino

15821 Centura Blvd., Suite 320E

Los Angeles, CA 91436

d: 818-905-2400

www.naicapital.com

NAI Capital
COMMERCIAL REAL ESTATE SERVICES, WORLDWIDE