

# The Carmichael Group

Serving the San Fernando Valley for Over 20 Years

FOR LEASE

## 9001 Fullbright Avenue

West SFV/Chatsworth

RENOVATED & RATE  
REDUCED



### Highlights:

- Distribution/manufacturing building
- Free standing building
- Lessor maintains air conditioning
- Offices modify to suit
- Private rear yard & parking

**Avail Space:** 19,000 Sq. Ft. Free Standing Building

**Office:** Modify to Suit; 3,900 Sq. Ft.

**Lease Rate:** 0.40/sf Y1; 0.50/Y2; 0.60 Y3

**Term:** 3-5 Years

**Power:** 800Amps 277-480v/3-Phase

**Clearance:** 14 Feet

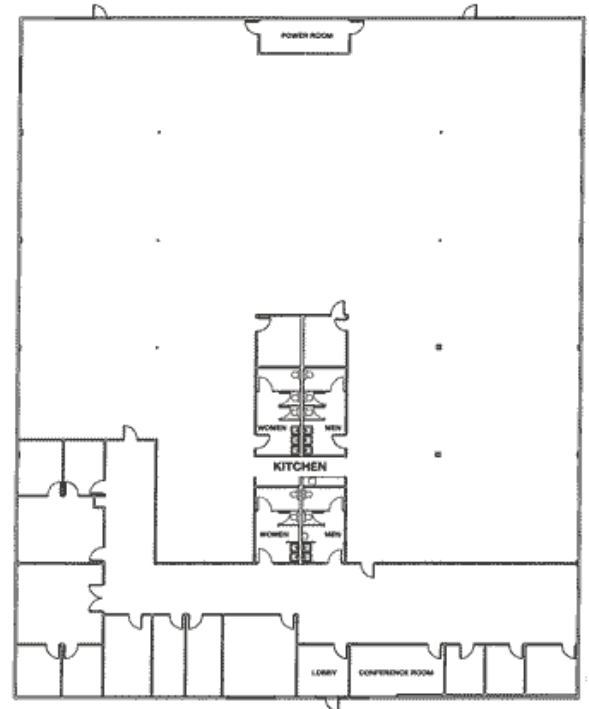
**HVAC:** Space Heater, A/C Office

**Yard:** Private Yard, Parking Area

**Parking:** 20 Spaces & Street Parking Available

**Loading:** 2 Ground Level 12x12 Doors

**Management:** Locally Owned & Managed



# NAI Capital

Commercial Real Estate Services, Worldwide.

No warranty, express or implied, is made as to the accuracy of the information contained herein. This information is submitted subject to errors, omissions, change of price, rental or other conditions, withdrawal without notice, and is subject to any special listing conditions imposed by our principals. Cooperating brokers, buyers, tenants and other parties who receive this document should not rely on it, but should use it as a starting point of analysis, and should independently confirm the accuracy of the information contained herein through a due diligence review of the books, records, files and documents that constitute reliable sources of the information described herein.

For information, please contact your exclusive listing agents:

**Chuck Carmichael**  
Senior Vice President

(818) 742-1648 direct  
DRE Lic. #01124322  
ccarmichael@naicapital.com

**Charles Carmichael**  
Associate

(818) 933-5979 direct  
DRE Lic. #01846455  
charles.carmichael@naicapital.com

16001 Ventura Blvd.  
Suite 200  
Encino, CA 91436  
Tel 818 905 2400  
Fax 818 905 2425