

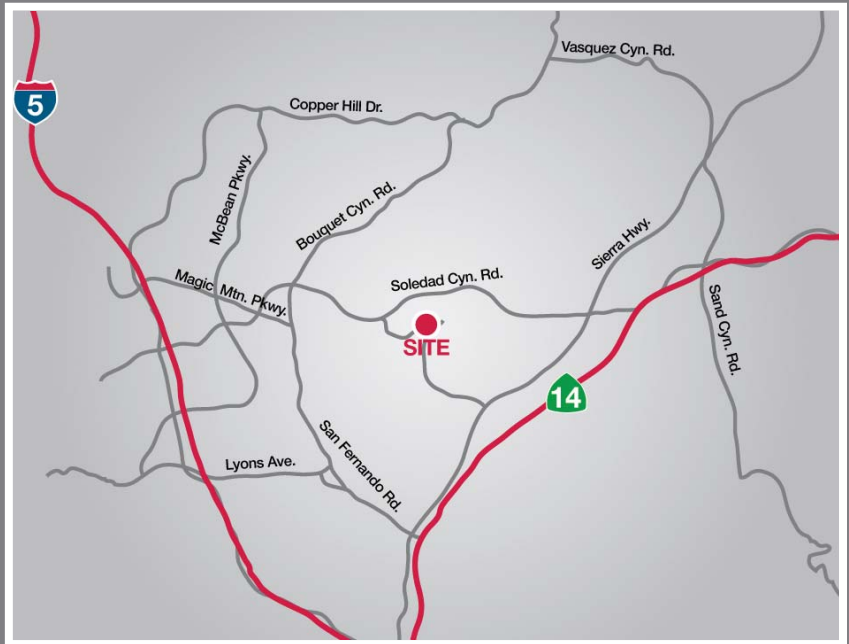
# For Lease

7,365 square feet

High-Image Industrial Facility  
Centre Pointe Business Park

## 20715 Centre Pointe Parkway Santa Clarita, California

- Extremely Clean Facility
- Located within Centre Pointe Business Park
- New Enterprise Zone Benefits
- Well Designed Office Layout with Phone and Data Lines in Place
- Extensive Wrap-Around Window Line with Views
- 22' Minimum Warehouse Clearance
- Ample Power
- Ample Parking
- Fire Sprinkler System
- Lush Landscape with Outdoor Break Area
- Minutes from Retail, Restaurants and Freeway On-ramp



No warranty, express or implied, is made as to the accuracy of the information contained herein. This information is submitted subject to errors, omissions, change of price, rental or other conditions, withdrawal without notice, and is subject to any special listing conditions imposed by our principals. Cooperating brokers, buyers, tenants and other parties who receive this document should not rely on it, but should use it as a starting point of analysis, and should independently confirm the accuracy of the information contained herein through a due diligence review of the books, records, files and documents that constitute reliable sources of the information described herein.

**NAI Capital**  
Commercial Real Estate Services, Worldwide.

For more information about this property and others, please contact:

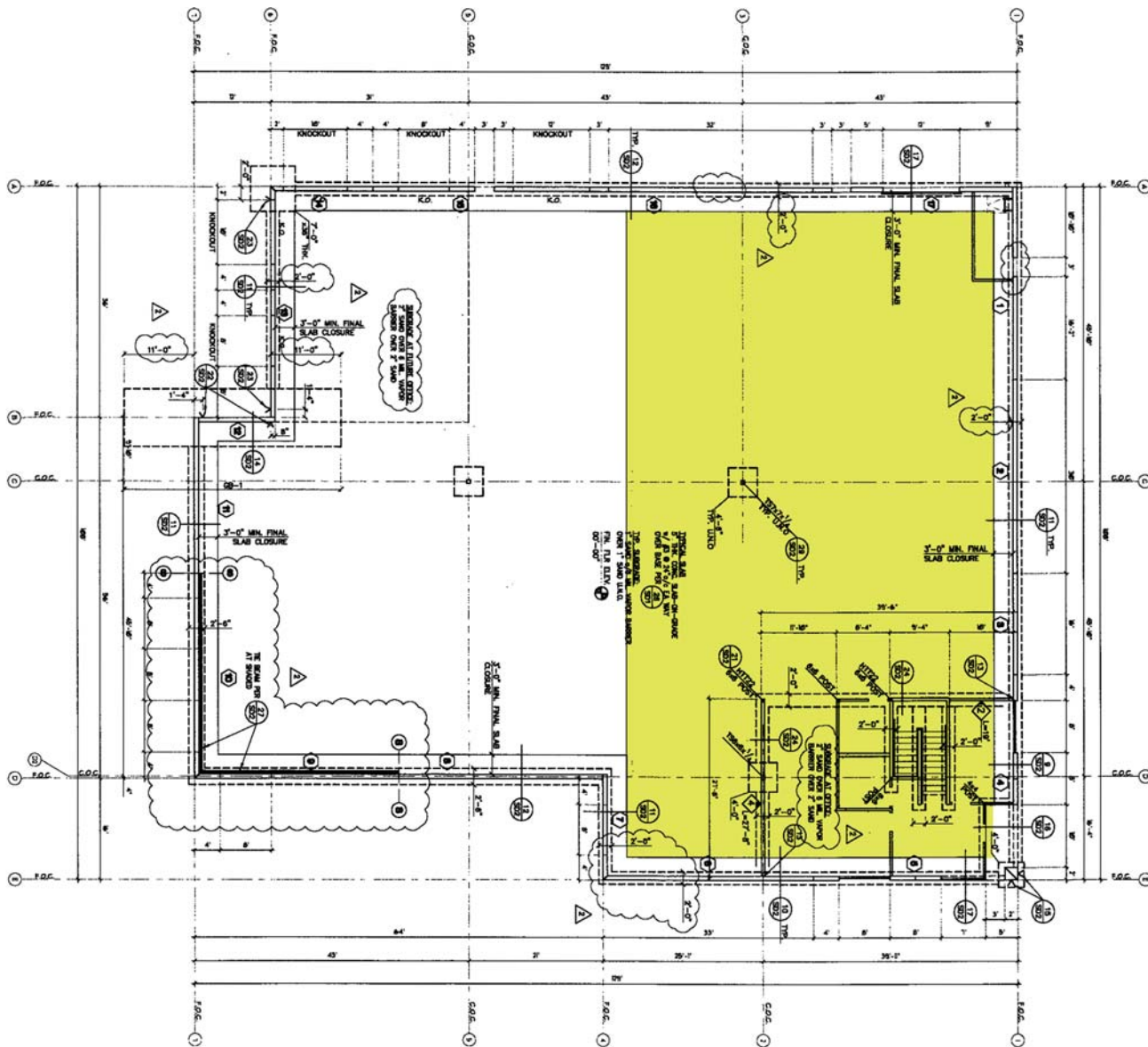
**Yair Haimoff**  
818 742 1659  
yhaimoff@naicapital.com

16001 Ventura Boulevard  
Suite 200  
Encino, California 91436  
818 905 2425 fax

# High-Image Industrial Facility in Centre Pointe Business Park

20715 Centre Pointe Parkway ■ Santa Clarita, California

## Site Plan



**NORTH**  
**FOUNDATION PLAN**  
SCALE: 1/8"=1'-0"

No warranty, express or implied, is made as to the accuracy of the information contained herein. This information is submitted subject to errors, omissions, change of price, rental or other conditions, withdrawal without notice, and is subject to any special listing conditions imposed by our principals. Cooperating brokers, buyers, tenants and other parties who receive this document should not rely on it, but should use it as a starting point of analysis, and should independently confirm the accuracy of the information contained herein through a due diligence review of the books, records, files and documents that constitute reliable sources of the information described herein.

For more information about this property and others, please contact:

**NAI Capital**  
Commercial Real Estate Services, Worldwide.

**Yair Haimoff**  
818 742 1659  
yhaimoff@naicapital.com

16001 Ventura Boulevard  
Suite 200  
Encino, California 91436  
818 905 2425 fax