

For Lease  
7,340 SF

High Image Warehouse/Office



## 12843 Foothill Blvd.

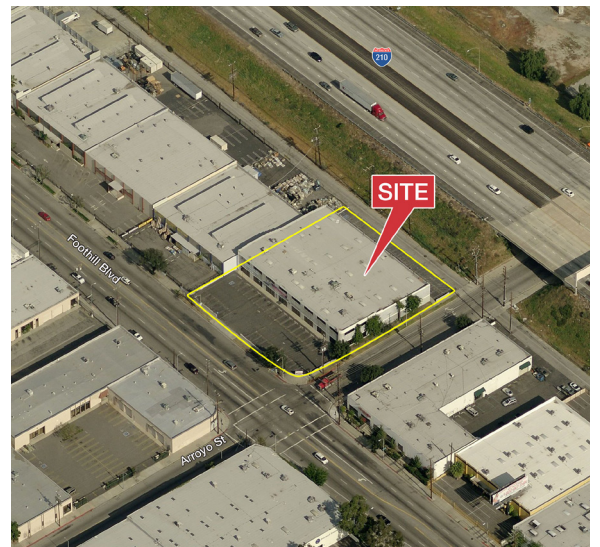
Sylmar, California 91342

### Asking Rate

Unit C: \$0.79 PSF MG 7,340 SF

### Property Highlights

- Excellent Northeast Valley Location
- High Image Facility
- Major Street & Freeway Visibility
- Well Designed Office Layout
- Many Interior Upgrades
- 20' Minimum Warehouse Clearance
- Large Rear Ground Level Loading Door
- Ample Power
- Across From Home Depot, Sam's Club and Other Major Retailers
- Easy Access to 210, 118, 5 & 405 Freeways



For more information:

**Yair Haimoff, SIOR**

Senior Vice President • 818 742 1659  
yhaimoff@naicapital.com • BRE Lic. #01414758

**Isaac Haimoff**

Senior Associate • 818 933 2361  
ihaimoff@naicapital.com • BRE Lic. #01853560

**Chelsey Bolotin**

Senior Associate • 818 933 2369  
cbolotin@naicapital.com • BRE Lic. #01854355

NO WARRANTY OR REPRESENTATION, EXPRESS OR IMPLIED, IS MADE AS TO THE ACCURACY OF THE INFORMATION CONTAINED HEREIN, AND THE SAME IS SUBMITTED SUBJECT TO ERRORS, OMISSIONS, CHANGE OF PRICE, RENTAL OR OTHER CONDITIONS, PRIOR SALE, LEASE OR FINANCING, OR WITHDRAWAL WITHOUT NOTICE, AND OF ANY SPECIAL LISTING CONDITIONS IMPOSED BY OUR PRINCIPALS NO WARRANTIES OR REPRESENTATIONS ARE MADE AS TO THE CONDITION OF THE PROPERTY OR ANY HAZARDS CONTAINED THEREIN ARE ANY TO BE IMPLIED.

16001 Ventura Blvd., Ste 200  
Encino, California 91436  
+1 818 905 2425 fax

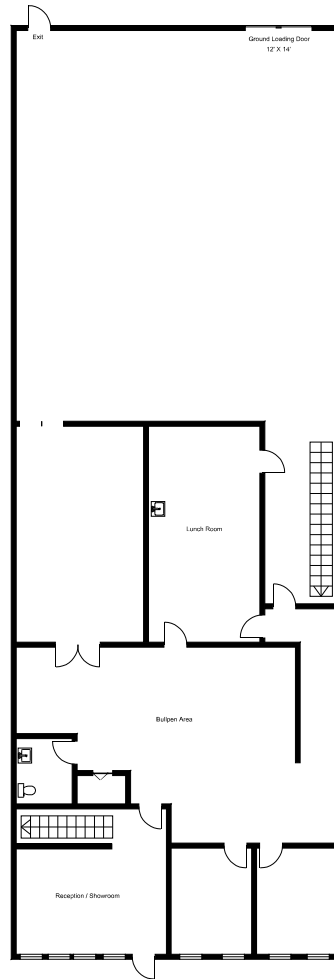
[naicapital.com](http://naicapital.com)

**For Lease  
7,340 SF**

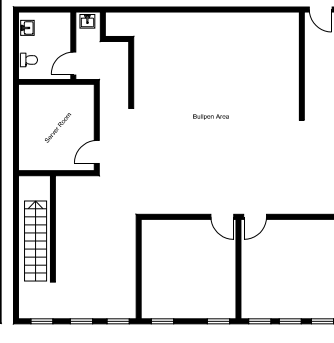
**High Image Warehouse/Office**

Floor Plan:

**Unit #C  
1st Floor**



**2nd Floor**



For more information:

**Yair Haimoff, SIOR**

Senior Vice President • 818 742 1659  
yhaimoff@naicapital.com • BRE Lic. #01414758

**Isaac Haimoff**

Senior Associate • 818 933 2361  
ihaimoff@naicapital.com • BRE Lic. #01853560

**Chelsey Bolotin**

Senior Associate • 818 933 2369  
cbolotin@naicapital.com • BRE Lic. #01854355



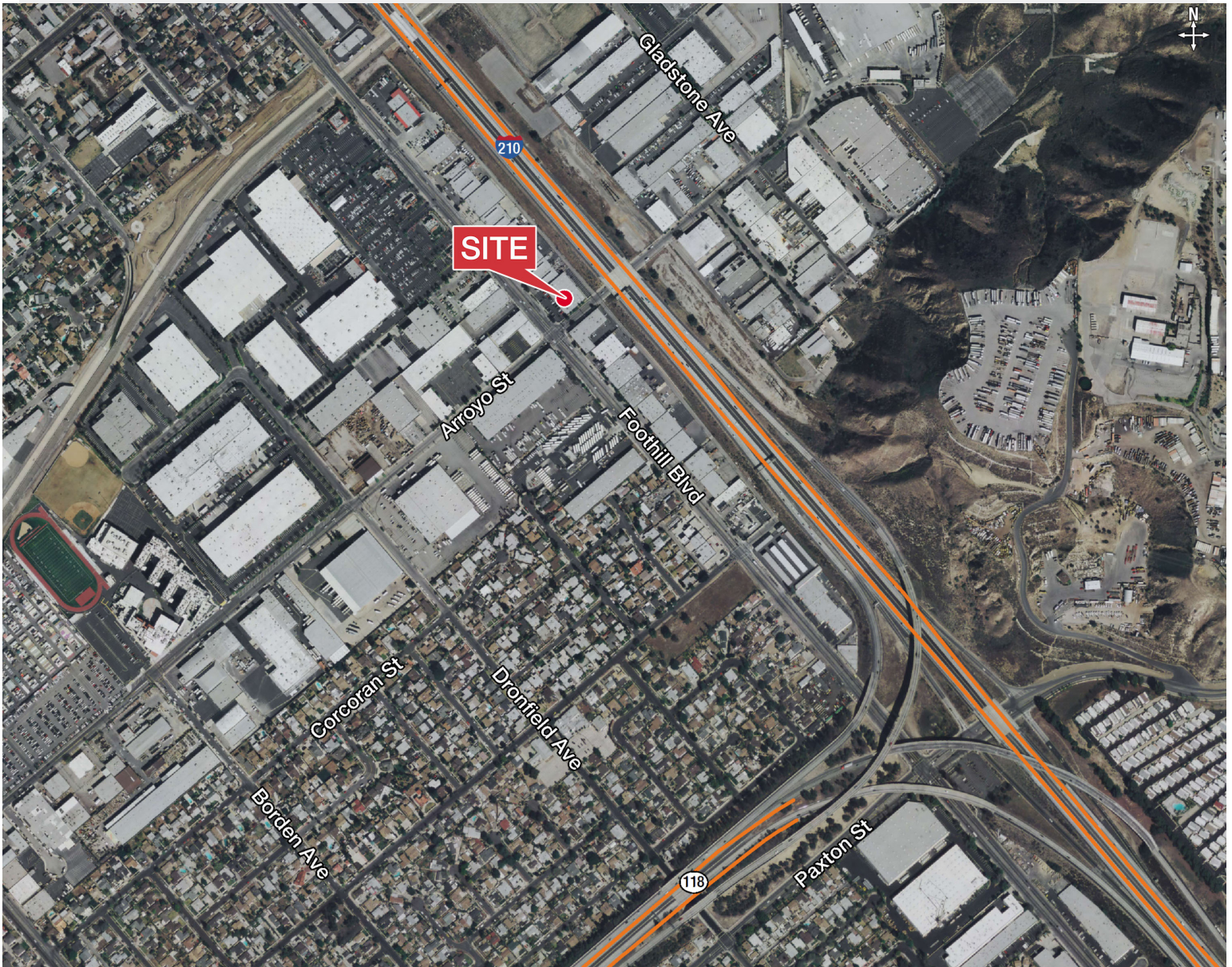
16001 Ventura Blvd., Ste 200  
Encino, California 91436  
+1 818 905 2425 fax  
[naicapital.com](http://naicapital.com)

NO WARRANTY OR REPRESENTATION, EXPRESS OR IMPLIED, IS MADE AS TO THE ACCURACY OF THE INFORMATION CONTAINED HEREIN, AND THE SAME IS SUBMITTED SUBJECT TO ERRORS, OMISSIONS, CHANGE OF PRICE, RENTAL OR OTHER CONDITIONS, PRIOR SALE, LEASE OR FINANCING, OR WITHDRAWAL WITHOUT NOTICE, AND OF ANY SPECIAL LISTING CONDITIONS IMPOSED BY OUR PRINCIPALS NO WARRANTIES OR REPRESENTATIONS ARE MADE AS TO THE CONDITION OF THE PROPERTY OR ANY HAZARDS CONTAINED THEREIN ARE ANY TO BE IMPLIED.

Aerial

For Lease  
7,340 SF

High Image Warehouse/Office



For more information:

**Yair Haimoff, SIOR**

Senior Vice President • 818 742 1659  
yhaimoff@naicapital.com • BRE Lic. #01414758

**Isaac Haimoff**

Senior Associate • 818 933 2361  
ihaimoff@naicapital.com • BRE Lic. #01853560

**Chelsey Bolotin**

Senior Associate • 818 933 2369  
cbolotin@naicapital.com • BRE Lic. #01854355

**NAI**Capital

16001 Ventura Blvd., Ste 200  
Encino, California 91436  
+1 818 905 2425 fax  
[naicapital.com](http://naicapital.com)

NO WARRANTY OR REPRESENTATION, EXPRESS OR IMPLIED, IS MADE AS TO THE ACCURACY OF THE INFORMATION CONTAINED HEREIN, AND THE SAME IS SUBMITTED SUBJECT TO ERRORS, OMISSIONS, CHANGE OF PRICE, RENTAL OR OTHER CONDITIONS, PRIOR SALE, LEASE OR FINANCING, OR WITHDRAWAL WITHOUT NOTICE, AND OF ANY SPECIAL LISTING CONDITIONS IMPOSED BY OUR PRINCIPALS NO WARRANTIES OR REPRESENTATIONS ARE MADE AS TO THE CONDITION OF THE PROPERTY OR ANY HAZARDS CONTAINED THEREIN ARE ANY TO BE IMPLIED.