

FOR LEASE MEDICAL OFFICE SUITES

5871 Pine

Chino Hills, California



HIGHLIGHTS

- 12,310 Total Square Feet
- 6,155 Square Feet per floor
- Divisible
- Visible to the 71 Freeway with easy access to the 15, 60 and 91 Freeways
- Elevator served
- Attractive TI Package
- 5 to 1 Parking
- Easy Access
- Great Medical Use
- Bus Line
- Many amenities in the area



Rental Rates:
\$2.25 Per Square Foot
Modified Gross

NAI Capital

Commercial Real Estate Services, Worldwide.

No warranty, express or implied, is made as to the accuracy of the information contained herein. This information is submitted subject to errors, omissions, change of price, rental or other conditions, withdrawal without notice, and is subject to any special listing conditions imposed by our principals. Cooperating brokers, buyers, tenants and other parties who receive this document should not rely on it, but should use it as a starting point of analysis, and should independently confirm the accuracy of the information contained herein through a due diligence review of the books, records, files and documents that constitute reliable sources of the information described herein.

For information, please contact your exclusive listing agents

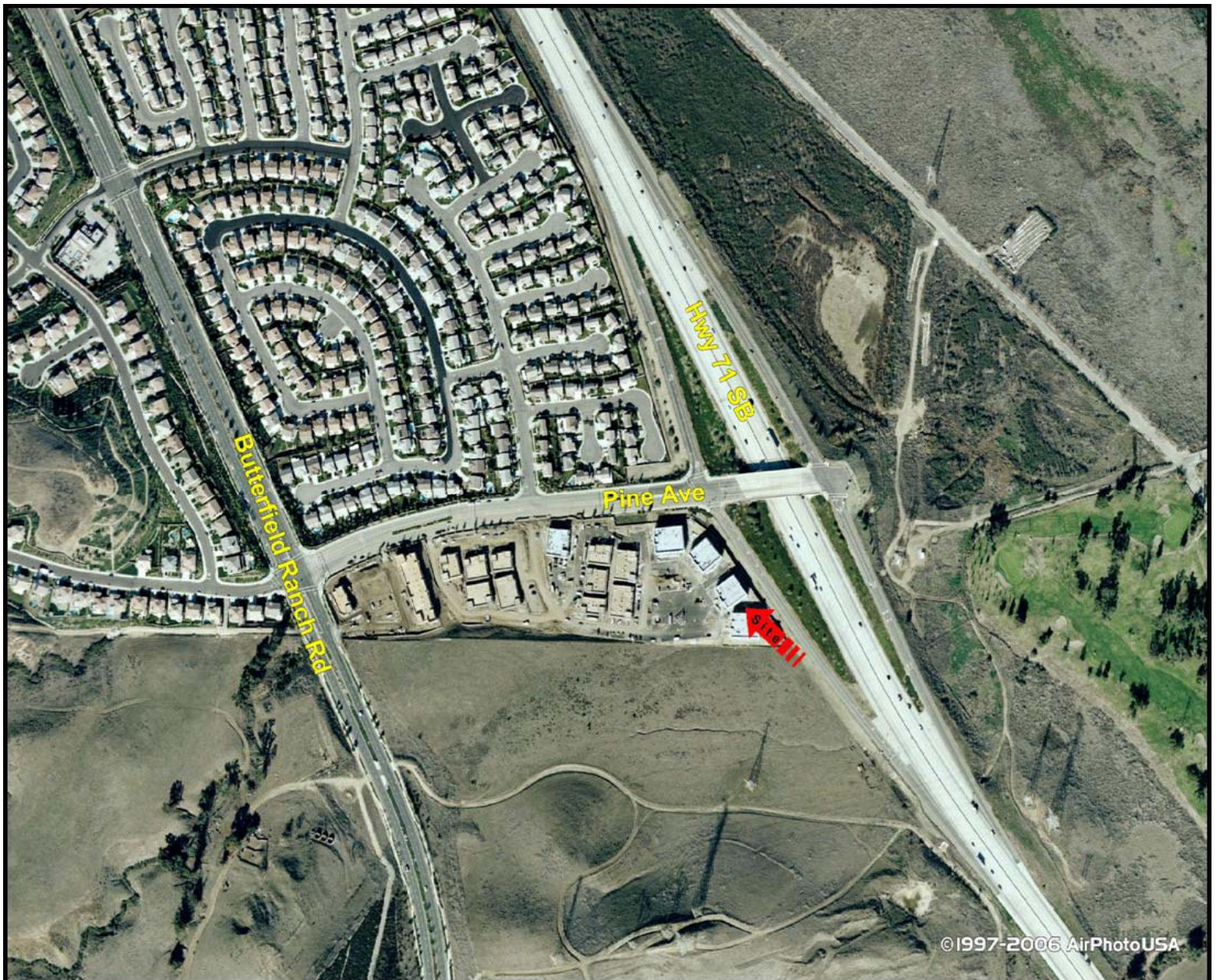
Dawn Lowder
dawnlowder@naicapital.com

Michelle Gonzalez
mgonzalez@naicapital.com

3281 E. Guasti Road, Suite 225
Ontario, California 91761
tel 909 945 2339
fax 909 945 2338

5871 Pine

Chino Hills, California



©1997-2006 AirPhotoUSA

For information, please contact your exclusive listing agents

NAI Capital

Commercial Real Estate Services, Worldwide.

No warranty, express or implied, is made as to the accuracy of the information contained herein. This information is submitted subject to errors, omissions, change of price, rental or other conditions, withdrawal without notice, and is subject to any special listing conditions imposed by our principals. Cooperating brokers, buyers, tenants and other parties who receive this document should not rely on it, but should use it as a starting point of analysis, and should independently confirm the accuracy of the information contained herein through a due diligence review of the books, records, files and documents that constitute reliable sources of the information described herein.

Dawn Lowder
dawnlowder@naicapital.com

Michelle Gonzalez
mgonzalez@naicapital.com

3281 E. Guasti Road, Suite 225
Ontario, California 91761
tel 909 945 2339
fax 909 945 2338