

For Sale
Freestanding Warehouse
with Fenced Yard
32,834 SF



1100 N Hellman Ave

Ontario, California 91764

Sale Highlights

- Approximate 32,834 SF High Image Free Standing Building
- Approximate 6,431 SF of Office with Upgraded Finishes
- Approximate 6,230 SF of Temperature Controlled Lab and Manufacturing Space
- Situated on 1.835 Acres
- 26' Minimum Clear
- Three (3) Exterior Dock High Doors, Two (2) Grade Level Doors
- 800 Amps 277/480 Volt Power
- Fenced and Secured Yard
- .60/3000 Sprinkler Calc
- No Association Fees
- Major Street Frontage on 4th St
- Located Minutes from the 10, 15 and 210 Freeways



For more information

Richard Lee

O: 909.243.7601
rlee@naicapital.com | CA #01757870

Nicholas Chang

O: 909.243.7614
nchang@naicapital.com | CA #01344844

Justin Kuehn

O: 909.243.7627
jkuehn@naicapital.com | CA #01966182

No warranty, express or implied, is made as to the accuracy of the information contained herein. This information is submitted subject to errors, omissions, change of price, rental or other conditions, withdrawal without notice, and is subject to any special listing conditions imposed by our principals. Cooperating brokers, buyers, tenants and other parties who receive this document should not rely on it, but should use it as a starting point of analysis, and should independently confirm the accuracy of the information contained herein through a due diligence review of the books, records, files and documents that constitute reliable sources of the information described herein. Logos are for identification purposes only and may be trademarks of their respective companies. NAI Capital, Inc. CA BRE Lic. #01990696.

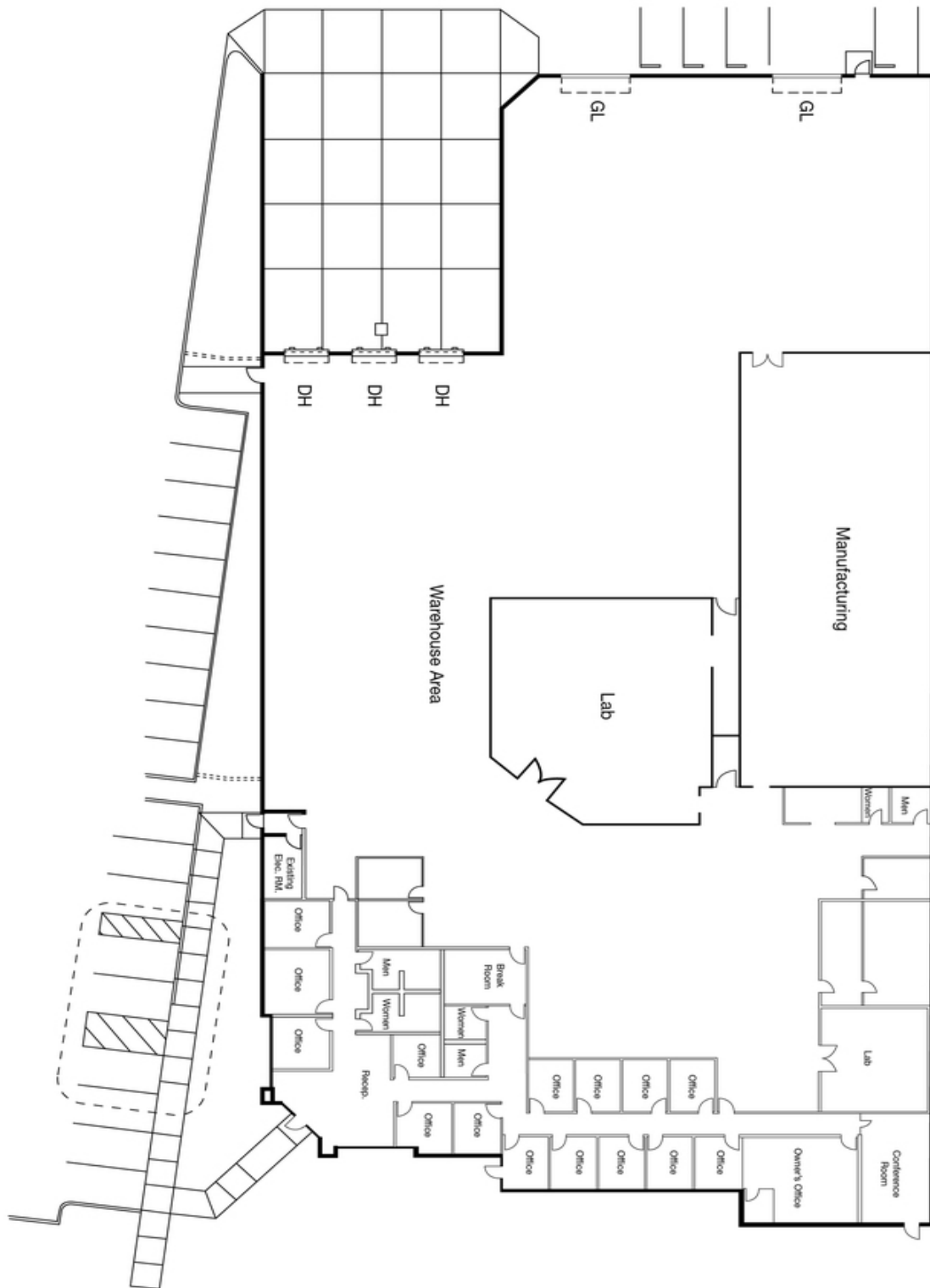
NAI Capital

800 N. Haven Ave. #400
Ontario, CA 91764
909.945.2339

naicapital.com

For Sale

1100 N Hellman Ave



Richard Lee

909.243.7601
rlee@naicapital.com
CA #01757870

Nicholas Chang

909.243.7614
nchang@naicapital.com
CA #01344844

Justin Kuehn

909.243.7627
jkuehn@naicapital.com
CA #01966182

NAI Capital
Commercial Real Estate Services, Worldwide.

For Sale

1100 N Hellman Ave



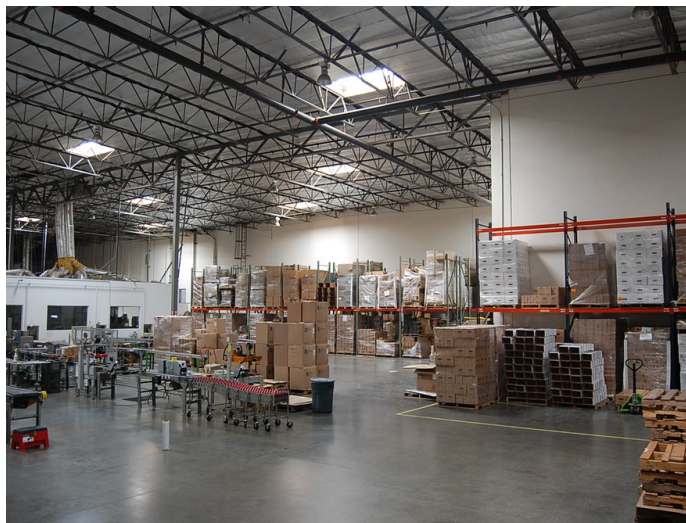
Richard Lee
909.243.7601
rlee@naicapital.com
CA #01757870

Nicholas Chang
909.243.7614
nchang@naicapital.com
CA #01344844

Justin Kuehn
909.243.7627
jkuehn@naicapital.com
CA #01966182

For Sale

1100 N Hellman Ave



Richard Lee

909.243.7601
rlee@naicapital.com
CA #01757870

Nicholas Chang

909.243.7614
nchang@naicapital.com
CA #01344844

Justin Kuehn

909.243.7627
jkuehn@naicapital.com
CA #01966182

NAICapital
Commercial Real Estate Services, Worldwide.