

19,271 SF INDUSTRIAL/FLEX BUILDING FOR LEASE
3589 HARBOR BOULEVARD, COSTA MESA, CA



Listing Agents

David Knowlton, CCIM, SIOR
Executive Vice President
dknowlton@naicapital.com
949.468.2307
CA DRE Lic #00893394

Nicholas Chang, CCIM, SIOR
Executive Vice President
nchang@naicapital.com
909.243.7614
CA DRE Lic. #01341826

NAI Capital
Commercial Real Estate Services, Worldwide.

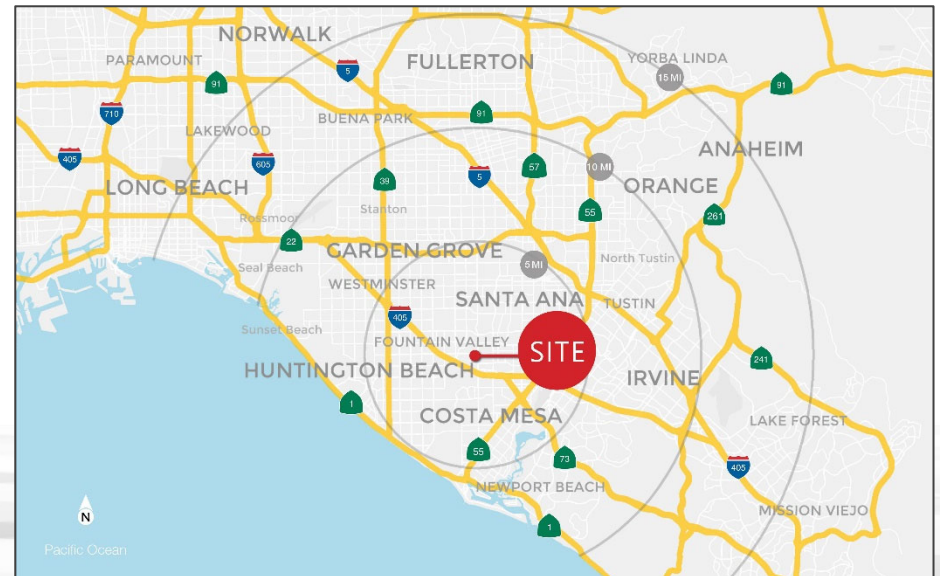
19,271 SF INDUSTRIAL/FLEX BUILDING FOR LEASE



Commercial Real Estate Services, Worldwide.

PROPERTY HIGHLIGHTS

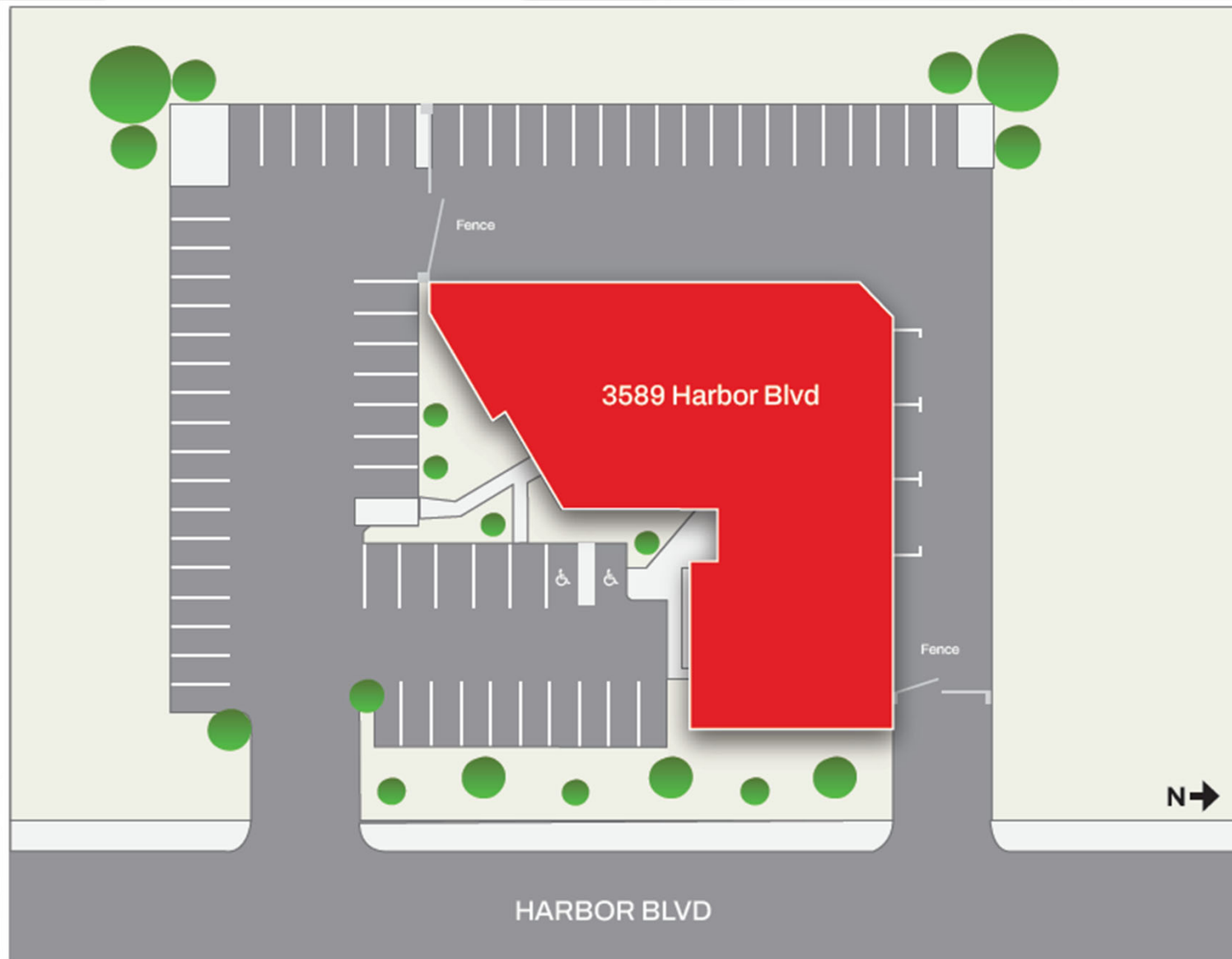
- 19,271 SF Freestanding Flex Building
- 14,071 SF of 2-Story Office
- Interior and Exterior Renovations Underway
- 70 Parking Spots (3.6:1,000)
- **9,000 SF Fenced-In Yard (est.)**
- 19' Warehouse Clear Height
- Three (3) 14'x14' Ground Level Truck Doors
- 400A, 120/208V Electrical Service
- Sprinklered
- Major Street Frontage & Identity
- Drive-Around Building
- 0.7 Mile from Harbor/405 Freeway Interchange
- Near SOCO & All Amenities
- **Call to Show**



NO WARRANTY, EXPRESS OR IMPLIED, IS MADE AS TO THE ACCURACY OF THE INFORMATION CONTAINED HEREIN. THIS INFORMATION IS SUBMITTED SUBJECT TO ERRORS, OMISSIONS, CHANGE OF PRICE, RENTAL OR OTHER CONDITIONS, WITHDRAWAL WITHOUT NOTICE, AND IS SUBJECT TO ANY SPECIAL LISTING CONDITIONS IMPOSED BY OUR PRINCIPALS. COOPERATING BROKERS, BUYERS, TENANTS AND OTHER PARTIES WHO RECEIVE THIS DOCUMENT SHOULD NOT RELY ON IT, BUT SHOULD USE IT AS A STARTING POINT OF ANALYSIS, AND SHOULD INDEPENDENTLY CONFIRM THE ACCURACY OF THE INFORMATION CONTAINED HEREIN THROUGH A DUE DILIGENCE REVIEW OF THE BOOKS, RECORDS, FILES AND DOCUMENTS THAT CONSTITUTE RELIABLE SOURCES OF THE INFORMATION DESCRIBED HEREIN. LOGOS ARE FOR IDENTIFICATION PURPOSES ONLY AND MAY BE TRADEMARKS OF THEIR RESPECTIVE COMPANIES. NAI CAPITAL, INC. CAL DRE LIC. #02130474

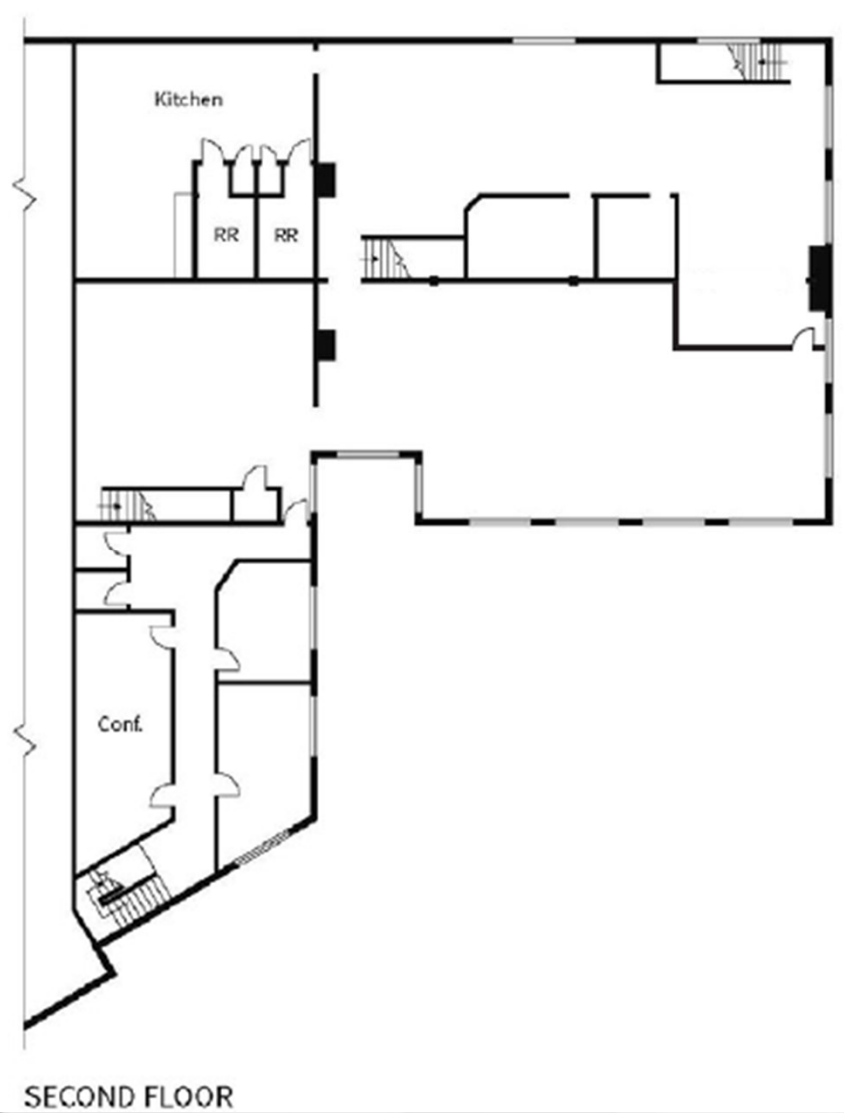
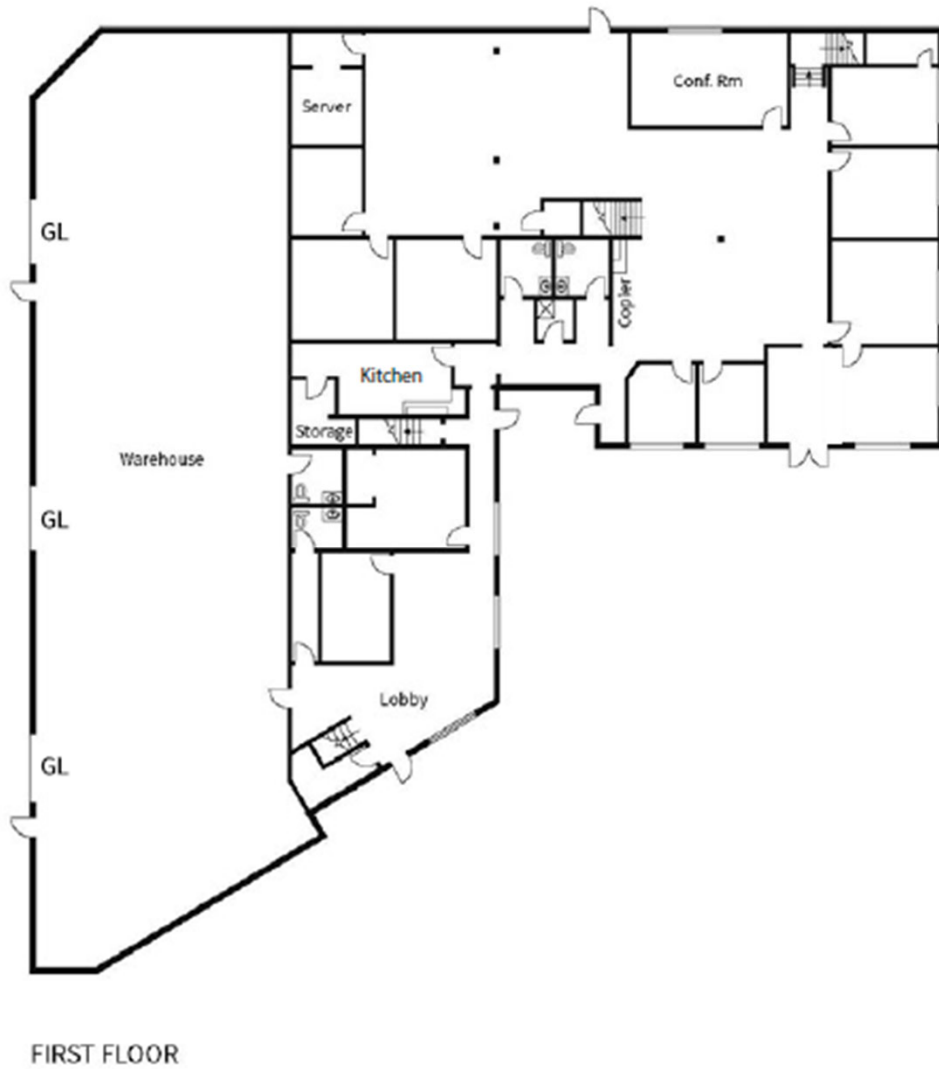
19,271 SF INDUSTRIAL/FLEX BUILDING
FOR LEASE

Site Plan

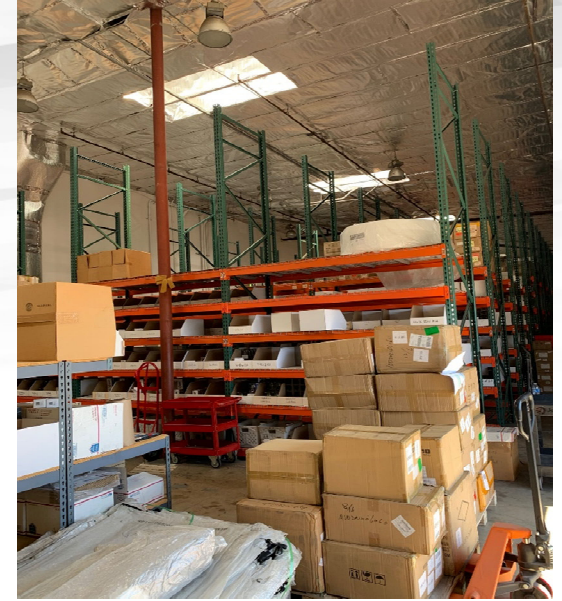
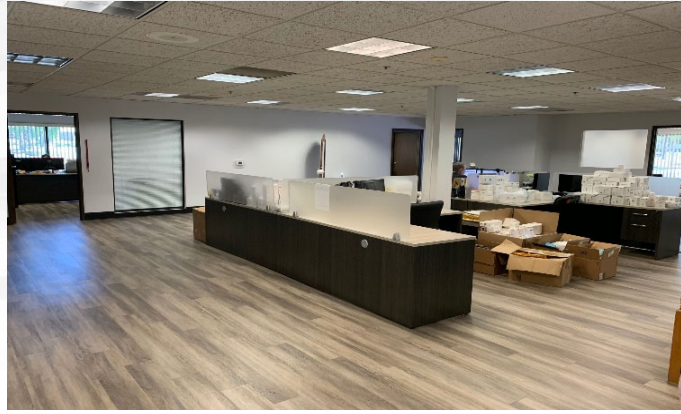
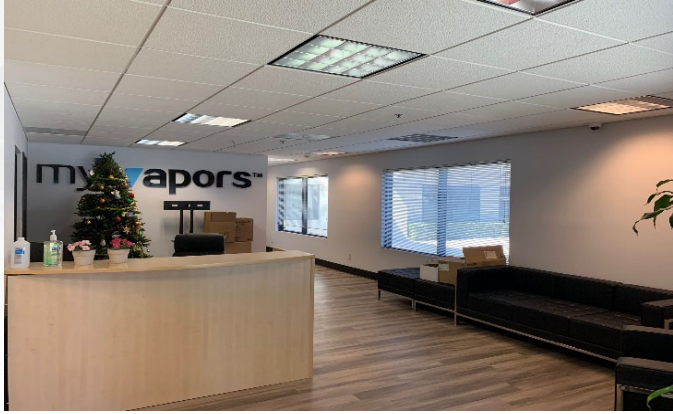


19,271 SF INDUSTRIAL/FLEX BUILDING FOR LEASE

Floor Plan



19,271 SF INDUSTRIAL/FLEX BUILDING FOR LEASE



19,271 SF INDUSTRIAL/FLEX BUILDING
FOR LEASE

Property Aerial

