

FOR SALE

1180 E. Francis St., Bldg. E

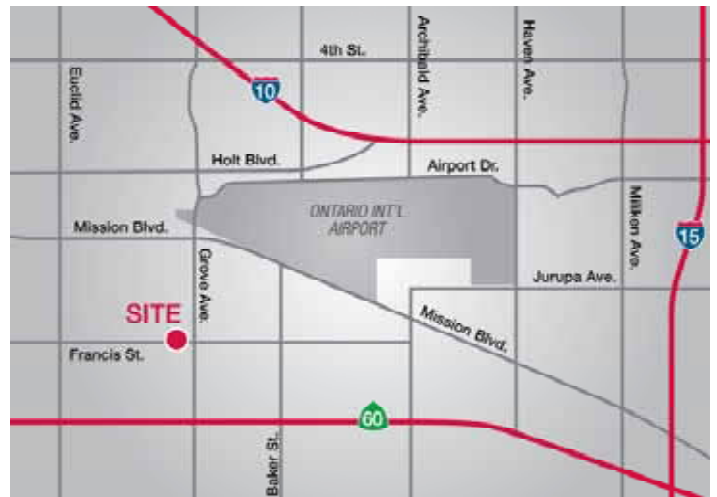
Ontario, CA 91761



HIGHLIGHTS

Asking \$143 PSF

- 11,396 SF
- Class A Industrial Building
- Prestigious Francis Business Park Location
- 22' Minimum Warehouse Ceiling Clearance
- 400 AMPS 277-480 V Power
- 0.33/ 3000 GPM Hi-Density Fire Sprinkler System
- Two (2) Large Grade Level Overhead Doors Load into a Private Staging Area
- +/- 1,700 SF of Offices, which includes 800 SF Permitted Mezzanine Office and Three (3) Restrooms
- Ideal Applications include Manufacturing, Assembly, Warehousing & Distribution
- Conveniently Located near the (60), (10), (15), & (71) Freeways



NAI Capital

Commercial Real Estate Services, Worldwide.

No warranty, express or implied, is made as to the accuracy of the information contained herein. This information is submitted subject to errors, omissions, change of price, rental or other conditions, withdrawal without notice, and is subject to any special listing conditions imposed by our principals. Cooperating brokers, buyers, tenants and other parties who receive this document should not rely on it, but should use it as a starting point of analysis, and should independently confirm the accuracy of the information contained herein through a due diligence review of the books, records, files and documents that constitute reliable sources of the information described herein.

For information, please contact your exclusive listing agents

Nicholas Chang
Vice President

949.375.2310

Nchang@naicapital.com

Richard Lee
Senior Associate

310.600.8888

Rlee@naicapital.com

3281 E. Guasti Rd., Ste. 225

Ontario, California 91761

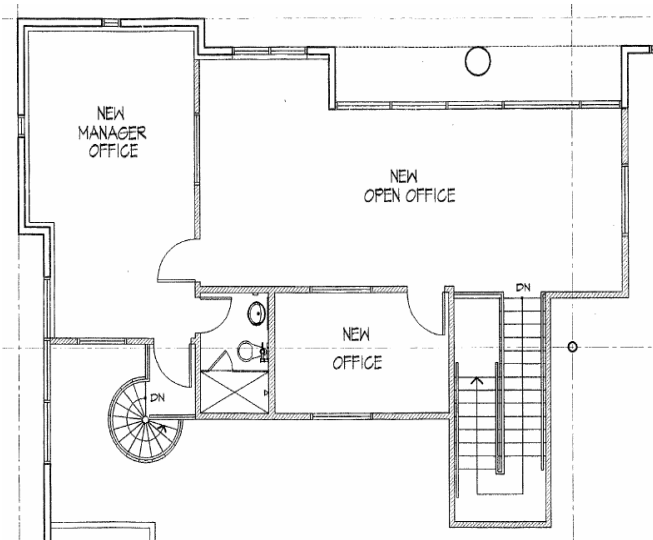
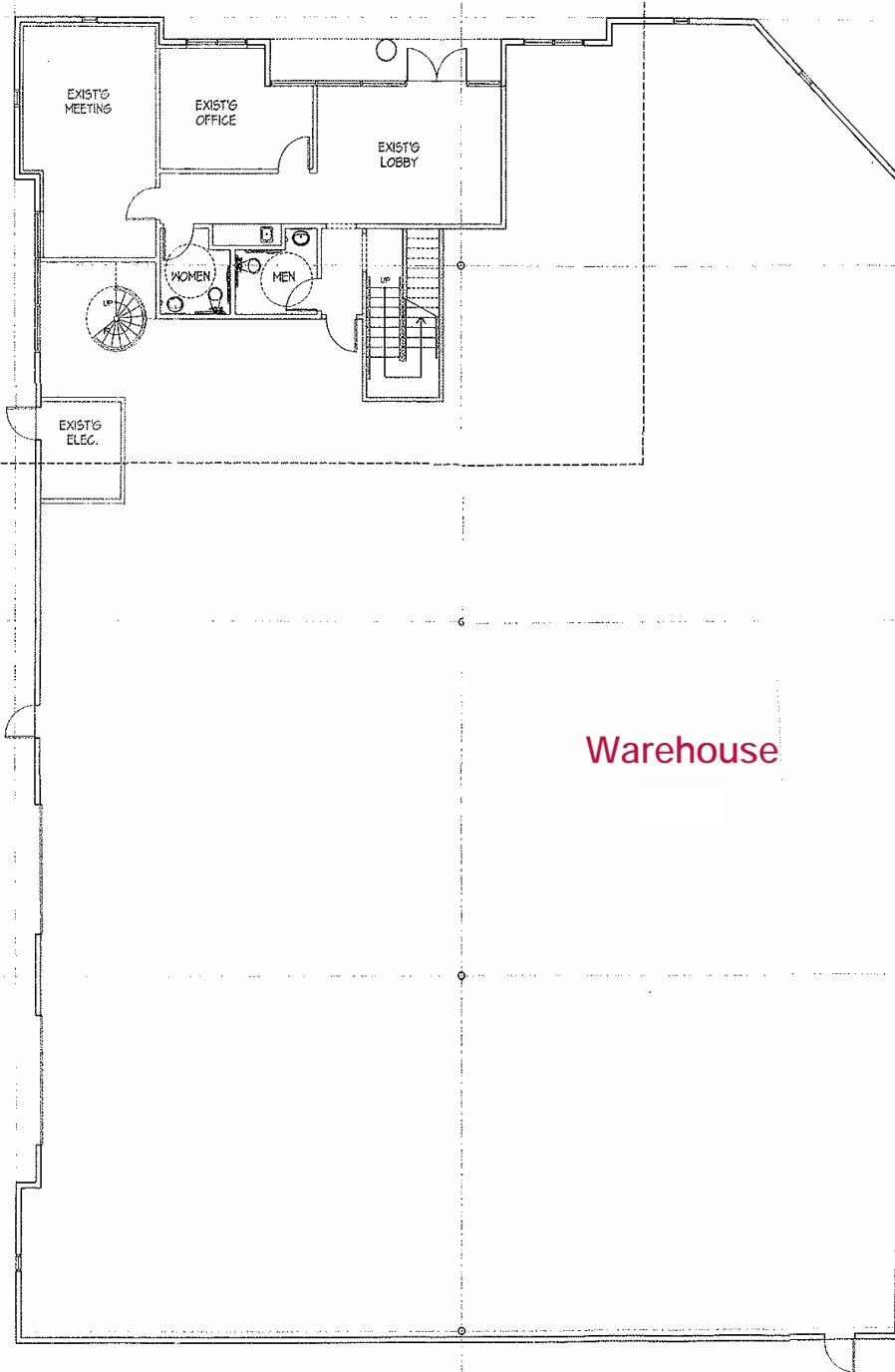
tel 909 945 2339

fax 909 945 2238

FOR SALE

1180 E. Francis St., Bldg. E

Ontario, CA 91761



Mezzanine Office



Commercial Real Estate Services, Worldwide.

No warranty, express or implied, is made as to the accuracy of the information contained herein. This information is submitted subject to errors, omissions, change of price, rental or other conditions, withdrawal without notice, and is subject to any special listing conditions imposed by our principals. Cooperating brokers, buyers, tenants and other parties who receive this document should not rely on it, but should use it as a starting point of analysis, and should independently confirm the accuracy of the information contained herein through a due diligence review of the books, records, files and documents that constitute reliable sources of the information described herein.

For information, please contact your exclusive listing agents

Nicholas Chang
Vice President

949.375.2310

Nchang@naicapital.com

Richard Lee
Senior Associate

310.600.8888

Rlee@naicapital.com

3281 E. Guasti Rd., Ste. 225
Ontario, California 91761

tel 909 945 2339

fax 909 945 2238