

2033

W CASMALIA

RIALTO, CA



FOR LEASE | 24,337 SF
BRAND NEW CLASS-A WAREHOUSE

Nicholas Chang, CCIM SIOR
Executive Vice President
909 243 7614 direct
nchang@naicapital.com
Cal DRE Lic #01344844

Richard Lee, SIOR
Executive Vice President
909 243 7601 direct
rlee@naicapital.com
Cal DRE Lic #01757870

Justin Kuehn
Vice President
909 243 7627 direct
jkuehn@naicapital.com
Cal DRE Lic #01969182

Sione Fua
Vice President
909 243 7619 direct
sfua@naicapital.com
Cal DRE Lic #02006432

NAI Capital
COMMERCIAL REAL ESTATE SERVICES, WORLDWIDE



LEE | CHANG
KUEHN | FUA

Building Features



24,337 SF

Brand New Class-A Warehouse
with Freeway Frontage



3 DH | 1 GL

Two 35,000 lb Pit Levelers



150'

Truck Court



1.43 Acres (62,409 SF)

Lot Size



26' Minimum

Clear Height



ESFR

Sprinkler System



2,190 SF

Office with 4 restrooms



Private Secured Yard

With Motorized Gate

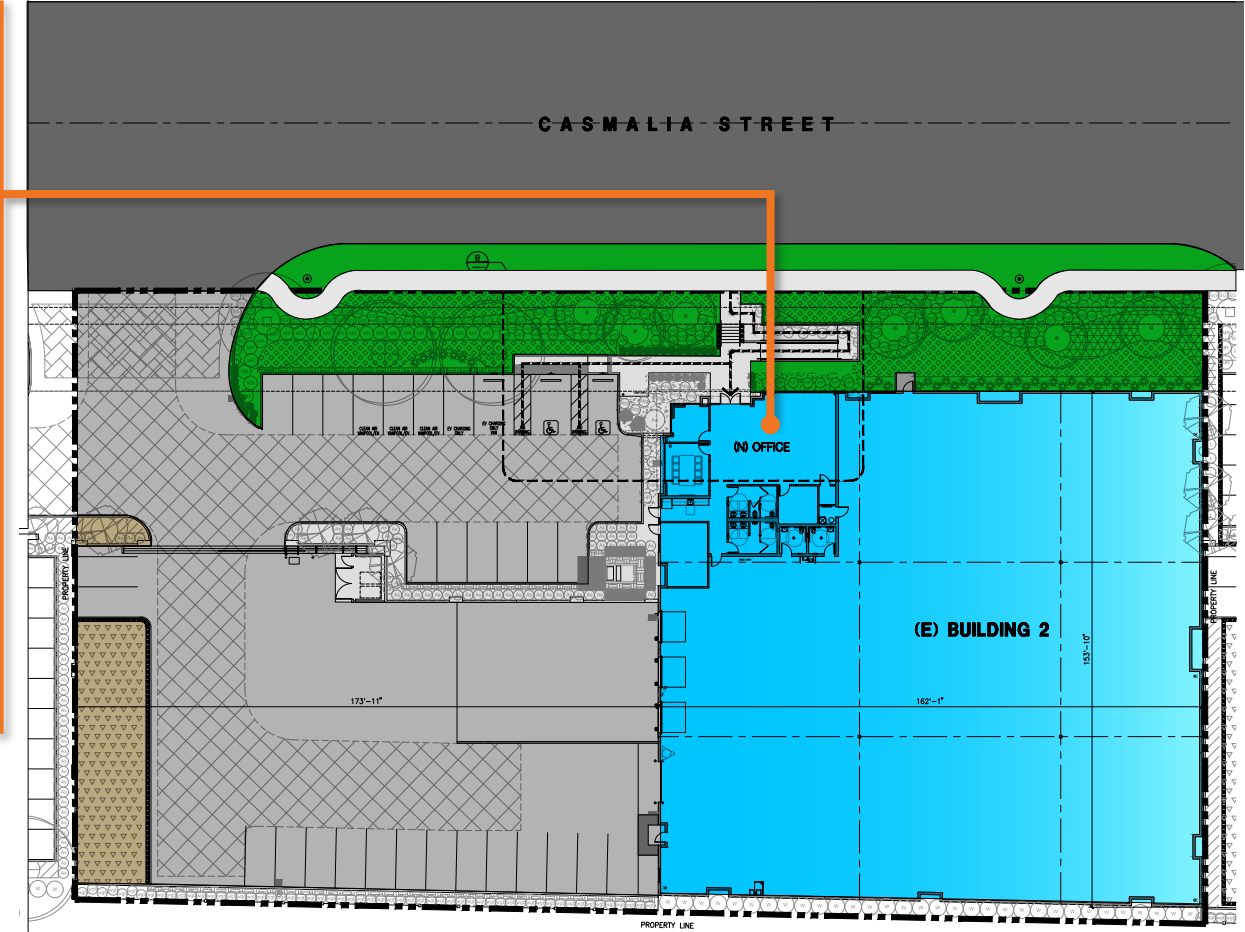
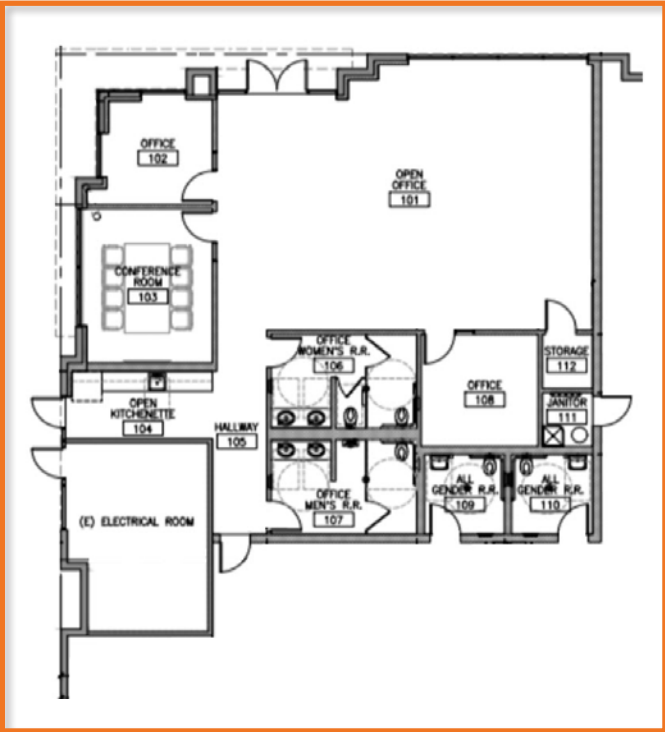


800 AMP

277/480 V | 3 PH Power

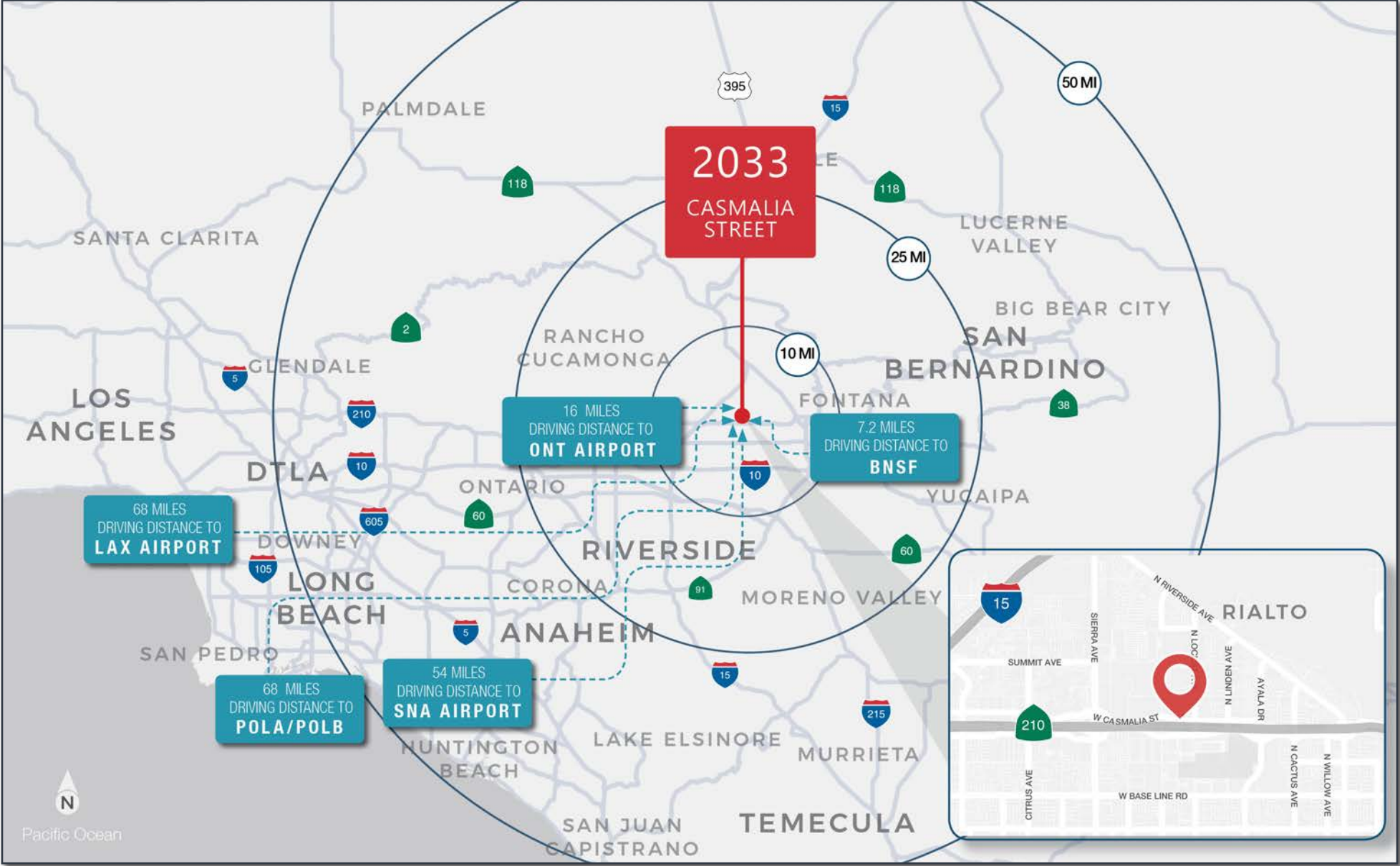


SITE PLAN





LOCATION MAP



FOR LEASE | 24,337 SF

BRAND NEW CLASS-A WAREHOUSE

2033 W CASMALIA ST

RIALTO, CA 92377

Nicholas Chang, CCIM SIOR

Executive Vice President
909 243 7614 direct
nchang@naicapital.com
Cal DRE Lic #01344844

Richard Lee, SIOR

Executive Vice President
909 243 7601 direct
rlee@naicapital.com
Cal DRE Lic #01757870

Justin Kuehn

Vice President
909 243 7627 direct
jkuehn@naicapital.com
Cal DRE Lic #01969182

Sione Fua

Vice President
909 243 7619 direct
sfua@naicapital.com
Cal DRE Lic #02006432

No warranty, express or implied, is made as to the accuracy of the information contained herein. This information is submitted subject to errors, omissions, change of price, rental or other conditions, withdrawal without notice, and is subject to any special listing conditions imposed by our principals. Cooperating brokers, buyers, tenants and other parties who receive this document should not rely on it, but should use it as a starting point of analysis, and should independently confirm the accuracy of the information contained herein through a due diligence review of the books, records, files and documents that constitute reliable sources of the information described herein. Logos are for identification purposes only and may be trademarks of their respective companies.
NAI Capital, Inc. Cal DRE Lic. #02130474.

NAICapital

Commercial Real Estate Services, Worldwide.



LEE | CHANG
KUEHN | FUA