

FOR SALE

5.0 Acres Vacant Commercial Land

Perry Street ■ Perris, CA



FEATURES:

- 5.0 Acres Vacant Land
- APN: 302-120-014
- Within quickly growing Perris city limits
- Zoned Business Park, zone change to Light Industrial in process
- Great location just off Perry Blvd. (major street)
- Owner is open to all offers
- Owner will carry, low down payment
- Contact city to verify use and utilities



No warranty, express or implied, is made as to the accuracy of the information contained herein. This information is submitted subject to errors, omissions, change of price, rental or other conditions, withdrawal without notice, and is subject to any special listing conditions imposed by our principals. Cooperating brokers, buyers, tenants and other parties who receive this document should not rely on it, but should use it as a starting point of analysis, and should independently confirm the accuracy of the information contained herein through a due diligence review of the books, records, files and documents that constitute reliable sources of the information described herein.

For more information, please contact your exclusive listing agents:

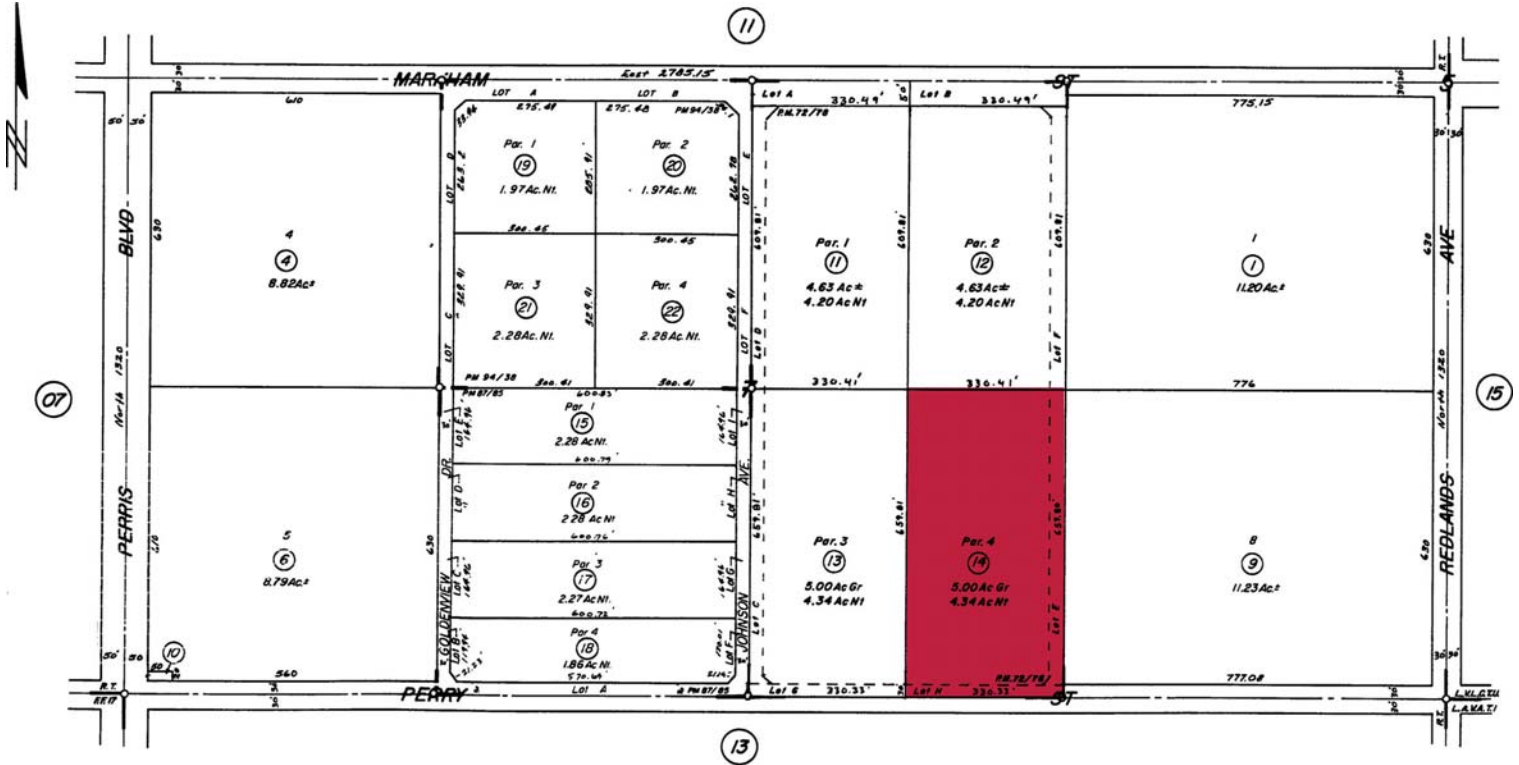
Don Archer
Vice President
tel 951 346 0800
cell 714 235 8131
darcher@naicapital.com
DRE License #01393449

2280 Market Street
Suite 150
Riverside, California 92501
tel 951 346 0800
fax 951 848 0643
www.naicapital.com

FOR SALE

5.0 Acres Vacant Commercial Land

Perry Street ■ Perris, CA



EXCELLENCE



NAI Capital

Commercial Real Estate Services, Worldwide.

No warranty, express or implied, is made as to the accuracy of the information contained herein. This information is submitted subject to errors, omissions, change of price, rental or other conditions, withdrawal without notice, and is subject to any special listing conditions imposed by our principals. Cooperating brokers, buyers, tenants and other parties who receive this document should not rely on it, but should use it as a starting point of analysis, and should independently confirm the accuracy of the information contained herein through a due diligence review of the books, records, files and documents that constitute reliable sources of the information described herein.

For more information, please contact your exclusive listing agents:

Don Archer
Vice President

tel 951 346 0800
cell 714 235 8131
darcher@naicapital.com
DRE License #01393449

2280 Market Street
Suite 150
Riverside, California 92501
tel 951 346 0800
fax 951 848 0643
www.naicapital.com