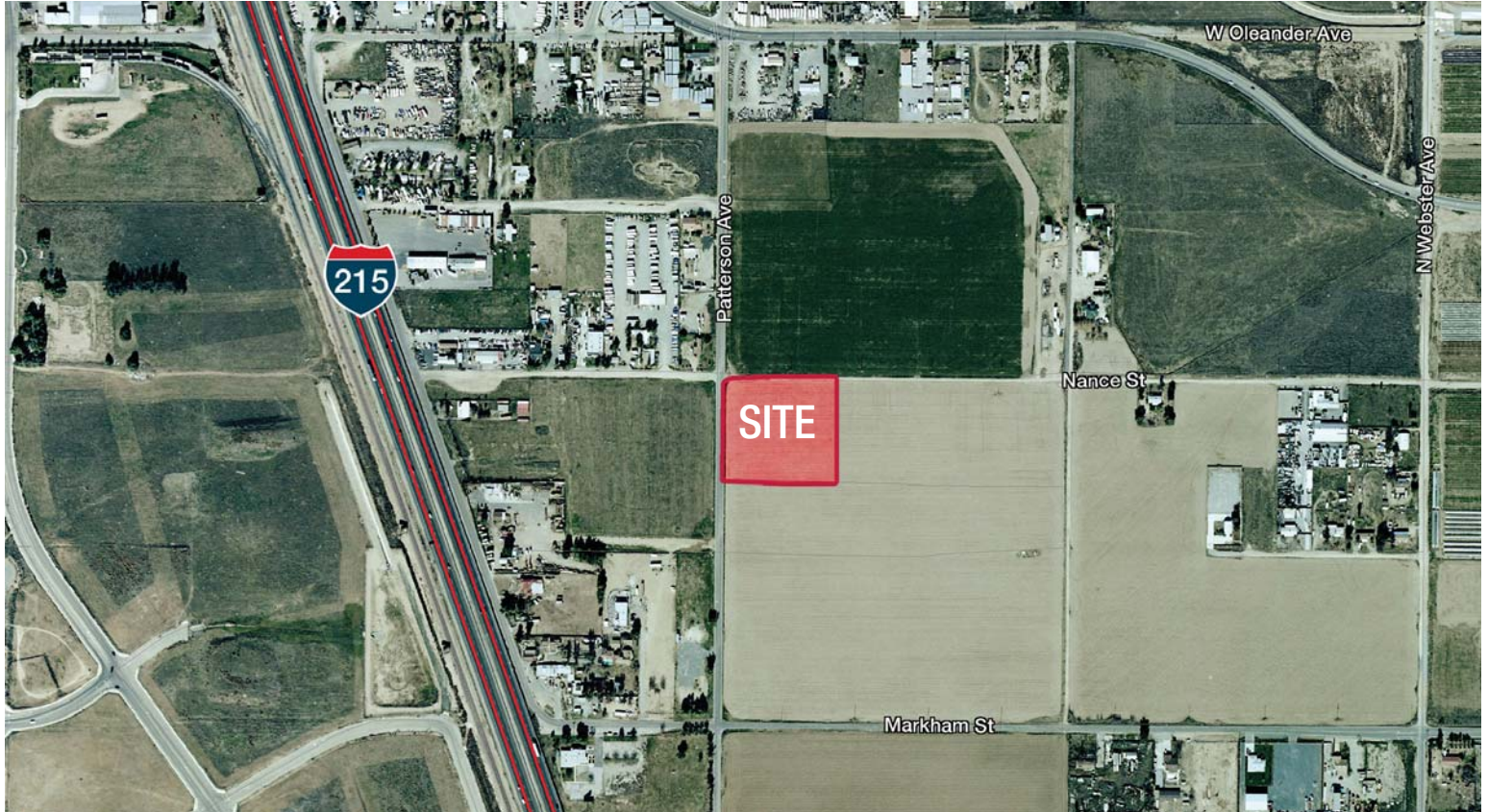


AVAILABLE

# 1.71 Acres For Sale

SEC Patterson Ave. and W. Nance St. ■ Perris, CA



## PROPERTY DETAILS

- Asking: \$375,000
- Vacant Land — Approximately 1.71 Acres
- Zoned Light Industrial
- Many Industrial Uses Allowed
- Near Freeway On/Off Ramp for Great Access
- City of Perris
- SEC of Patterson Ave. and W. Nance St.
- Patterson Ave. – Paved Road
- APN: 314-161-042,-043



Commercial Real Estate Services, Worldwide.

No warranty, express or implied, is made as to the accuracy of the information contained herein. This information is submitted subject to errors, omissions, change of price, rental or other conditions, withdrawal without notice, and is subject to any special listing conditions imposed by our principals. Cooperating brokers, buyers, tenants and other parties who receive this document should not rely on it, but should use it as a starting point of analysis, and should independently confirm the accuracy of the information contained herein through a due diligence review of the books, records, files and documents that constitute reliable sources of the information described herein.

**Don Archer**  
**Vice President**

tel 951 346 0800  
cell 714 235 8131  
DRE #01393449  
darcher@naicapital.com

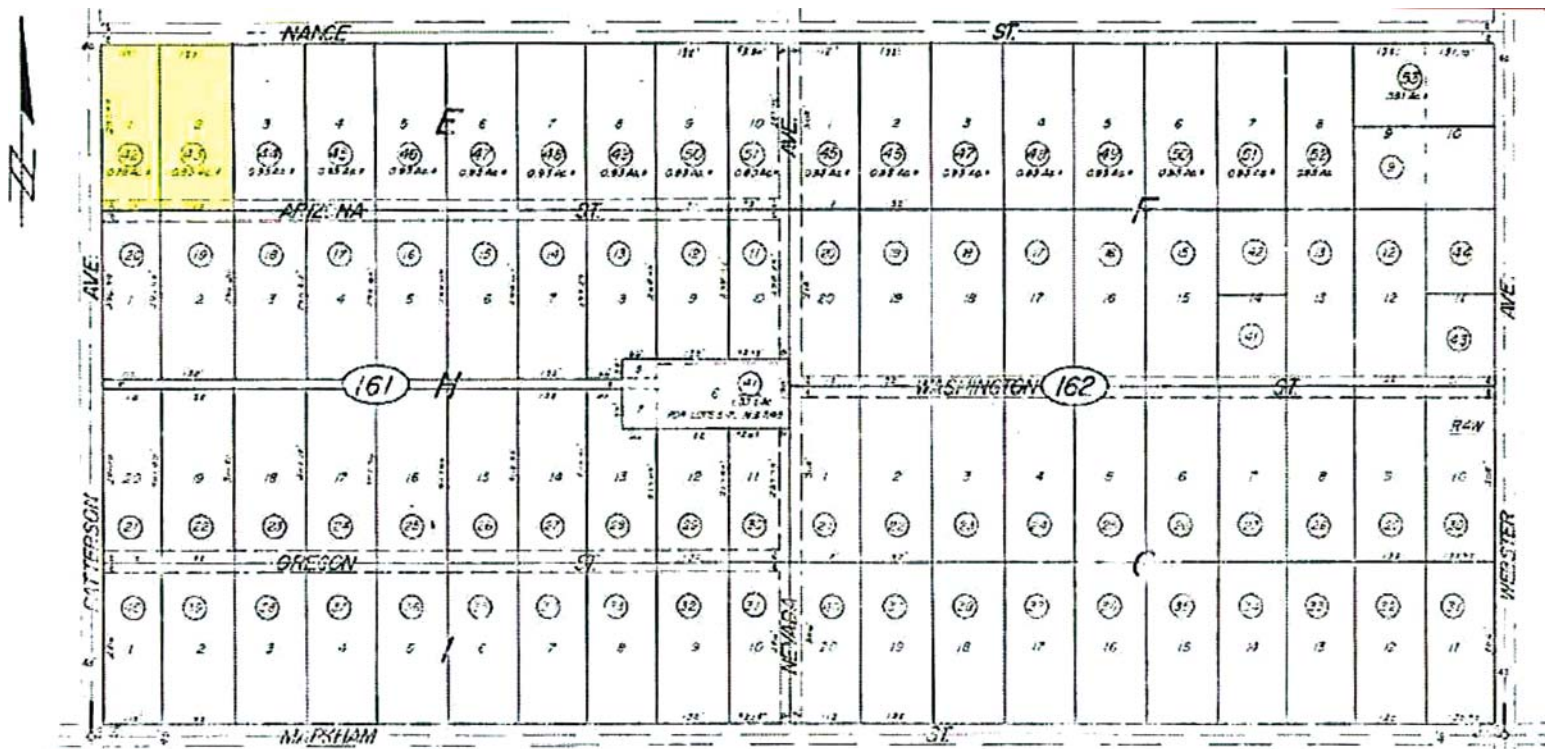
2280 Market Street  
Suite 150  
Riverside, California 92501  
tel 951 346 0800  
fax 951 848 0643  
www.naicapital.com

AVAILABLE

# 1.71 Acres For Sale

SEC Patterson Ave. and W. Nance St. ■ Perris, CA

## PARCEL MAP



**NAI Capital**

Commercial Real Estate Services, Worldwide.

No warranty, express or implied, is made as to the accuracy of the information contained herein. This information is submitted subject to errors, omissions, change of price, rental or other conditions, withdrawal without notice, and is subject to any special listing conditions imposed by our principals. Cooperating brokers, buyers, tenants and other parties who receive this document should not rely on it, but should use it as a starting point of analysis, and should independently confirm the accuracy of the information contained herein through a due diligence review of the books, records, files and documents that constitute reliable sources of the information described herein.

**Don Archer**  
**Vice President**

tel 951 346 0800  
cell 714 235 8131  
DRE #01393449  
darcher@naicapital.com

2280 Market Street  
Suite 150  
Riverside, California 92501  
tel 951 346 0800  
fax 951 848 0643  
www.naicapital.com