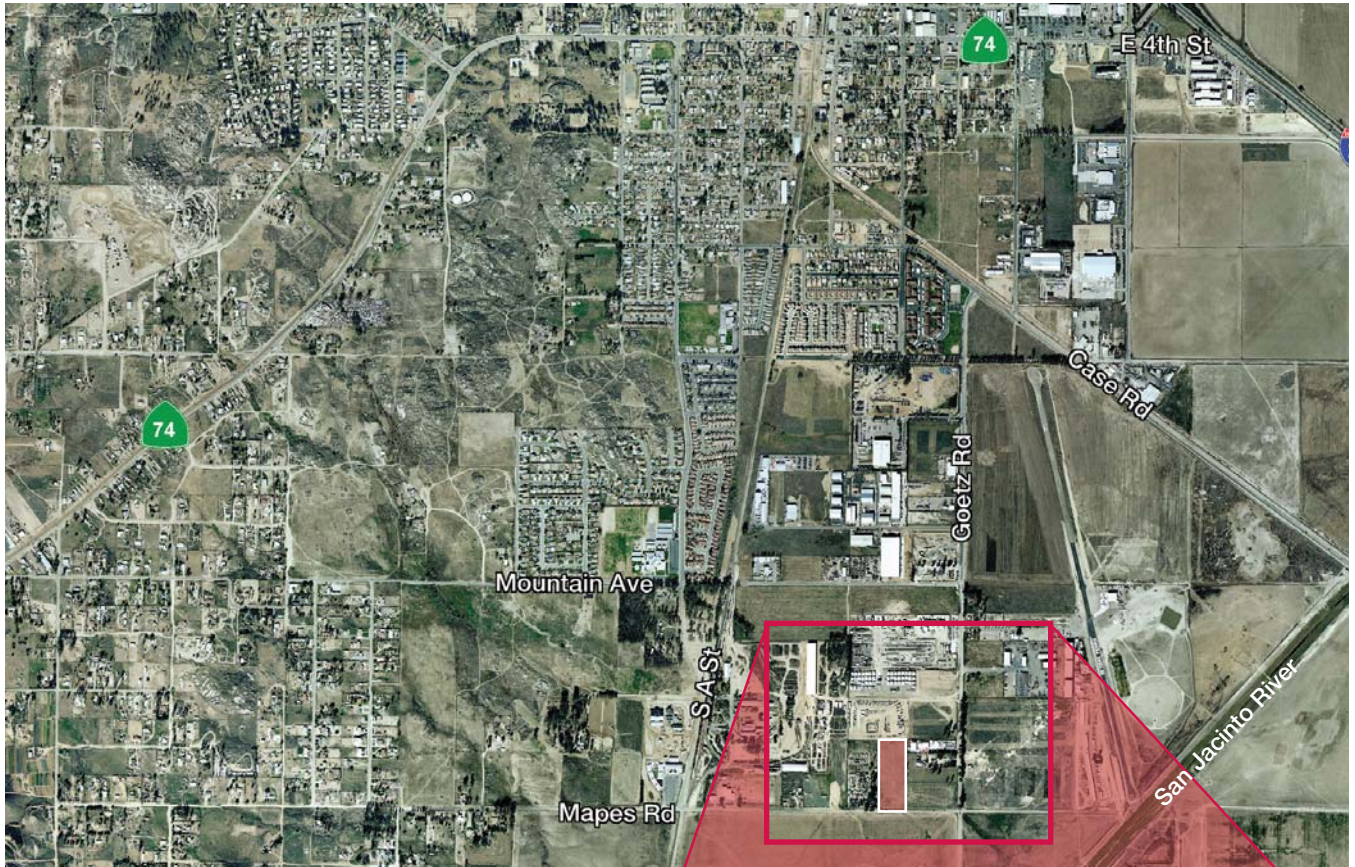


FOR SALE

5.94± Acre Lot

Mapes Rd. at Goetz Rd. ■ Perris, CA

FOR SALE



FEATURES:

- Asking Price: \$1,940,595.00
- 5.94± Acres Vacant Land on Mapes Road
- Adjacent Corner Lot For Sale
- Zoned Heavy-General Industrial
- Many Industrial Uses Possible
- APN: 330-080-006
- Pre-Approved Plans for RV/Contractors' Storage Yard



Commercial Real Estate Services, Worldwide.

No warranty, express or implied, is made as to the accuracy of the information contained herein. This information is submitted subject to errors, omissions, change of price, rental or other conditions, withdrawal without notice, and is subject to any special listing conditions imposed by our principals. Cooperating brokers, buyers, tenants and other parties who receive this document should not rely on it, but should use it as a starting point of analysis, and should independently confirm the accuracy of the information contained herein through a due diligence review of the books, records, files and documents that constitute reliable sources of the information described herein.

Don Archer
Vice President

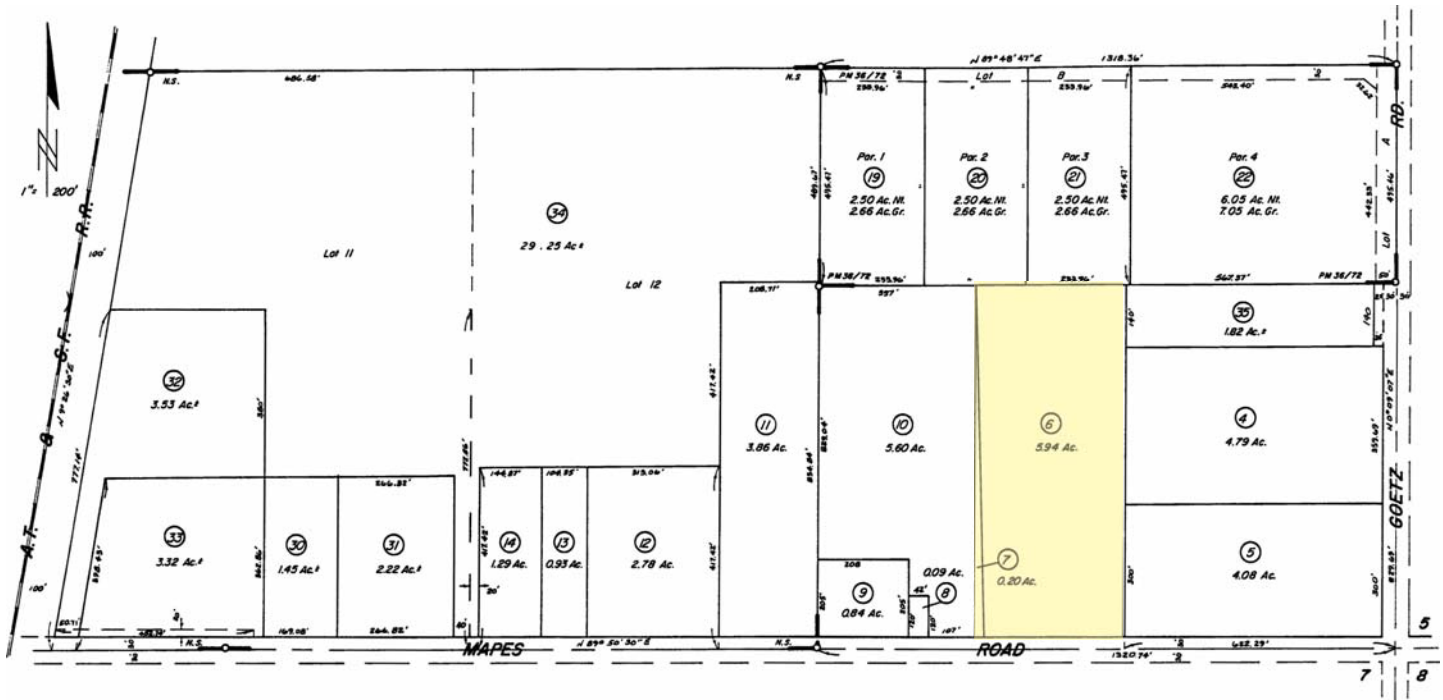
tel 951 346 0800
cell 714 235 8131
DRE #01393449
darcher@naicapital.com

2280 Market Street
Suite 150
Riverside, California 92501
tel 951 346 0800
fax 951 848 0643
www.naicapital.com

FOR SALE

5.94± Acre Lot

Mapes Rd. at Goetz Rd. ■ Perris,



REGIONAL MAP



NAI Capital

Commercial Real Estate Services, Worldwide.

No warranty, express or implied, is made as to the accuracy of the information contained herein. This information is submitted subject to errors, omissions, change of price, rental or other conditions, withdrawal without notice, and is subject to any special listing conditions imposed by our principals. Cooperating brokers, buyers, tenants and other parties who receive this document should not rely on it, but should use it as a starting point of analysis, and should independently confirm the accuracy of the information contained herein through a due diligence review of the books, records, files and documents that constitute reliable sources of the information described herein.

Don Archer
Vice President

tel 951 346 0800
cell 714 235 8131
DRE #01393449
darcher@naicapital.com

2280 Market Street
Suite 150
Riverside, California 92501
tel 951 346 0800
fax 951 848 0643
www.naicapital.com