

For Sale / Lease

871-921 Park Street

Perris, CA

NOW AVAILABLE



PROPERTY DETAILS:

- **Available For Sale**
- 16,200 Sq. Ft. metal building with approximately 1,200 Sq. Ft. office
- 2,000 Sq. Ft. office building
- Property is about .96 acres
- Metal building can be used as Multi-Tenant building at (2) units at 3,600 Sq. Ft. and (2) units at 4,200 Sq. Ft.
- Yard available
- Property zoned LI (Light Industrial)
- Also available for lease @ 9,100 I.G. per month
- APN: 313-254-006
- Heavy power available up to 1000 Amps
- **WILL LOOK AT ALL OFFERS**
- **SPECIAL: \$7,500 per month for the first 3 months**



Commercial Real Estate Services, Worldwide.

No warranty, express or implied, is made as to the accuracy of the information contained herein. This information is submitted subject to errors, omissions, change of price, rental or other conditions, withdrawal without notice, and is subject to any special listing conditions imposed by our principals. Cooperating brokers, buyers, tenants and other parties who receive this document should not rely on it, but should use it as a starting point of analysis, and should independently confirm the accuracy of the information contained herein through a due diligence review of the books, records, files and documents that constitute reliable sources of the information described herein.

Don Archer
Vice President

tel 951 346 0800
cell 714 235 8131
DRE #01393449
darcher@naicapital.com

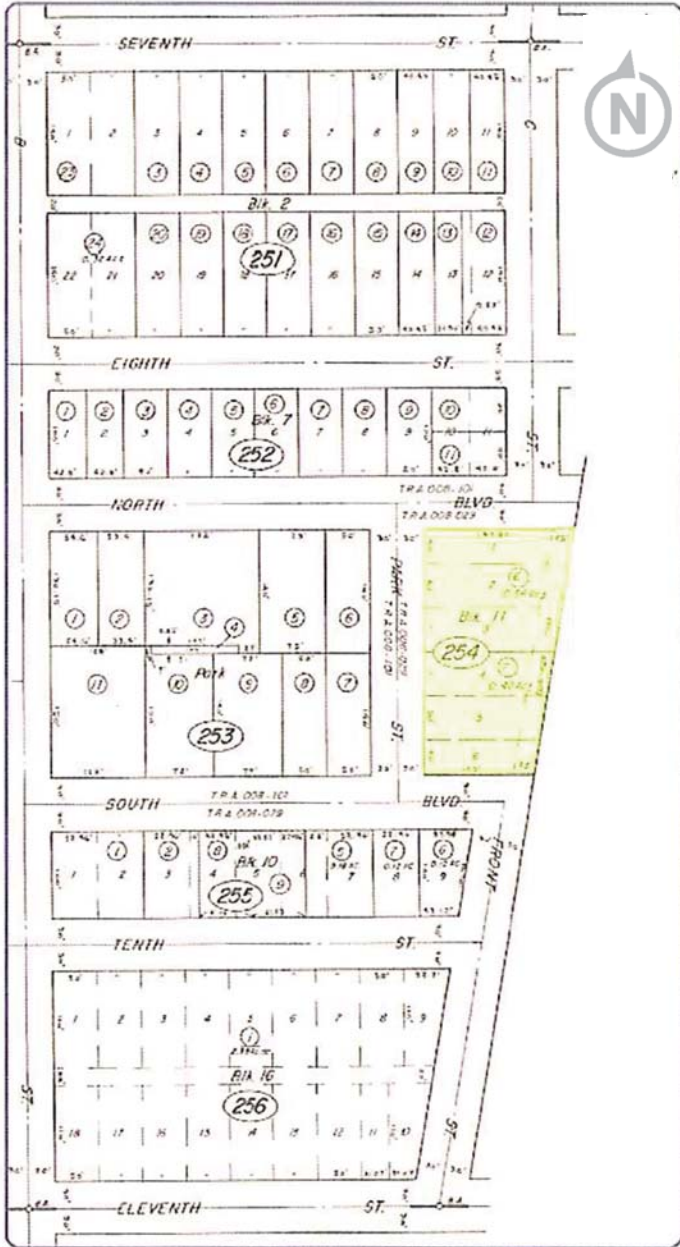
2280 Market Street
Suite 150
Riverside, California 92501
tel 951 346 0800
fax 951 848 0643
www.naicapital.com

For Sale/Lease

871-921 Park Street

Perris, CA

Parcel Map



Street View



Building View



Rear View



NAI Capital

Commercial Real Estate Services, Worldwide.

No warranty, express or implied, is made as to the accuracy of the information contained herein. This information is submitted subject to errors, omissions, change of price, rental or other conditions, withdrawal without notice, and is subject to any special listing conditions imposed by our principals. Cooperating brokers, buyers, tenants and other parties who receive this document should not rely on it, but should use it as a starting point of analysis, and should independently confirm the accuracy of the information contained herein through a due diligence review of the books, records, files and documents that constitute reliable sources of the information described herein.

Don Archer
Vice President

tel 951 346 0800

cell 714 235 8131

DRE #01393449

darcher@naicapital.com

2280 Market Street
Suite 150
Riverside, California 92501
tel 951 346 0800
fax 951 848 0643
www.naicapital.com