

FOR SUBLEASE

6722 Columbus St.

Riverside, CA



FEATURES:

- Approximately 5,600± SF Metal/Block Building
- 20,000± SF Lot
- Large Fenced Yard
- Zoned Light Industrial
- Great for Automotive Uses



NAI Capital

Commercial Real Estate Services, Worldwide.

No warranty, express or implied, is made as to the accuracy of the information contained herein. This information is submitted subject to errors, omissions, change of price, rental or other conditions, withdrawal without notice, and is subject to any special listing conditions imposed by our principals. Cooperating brokers, buyers, tenants and other parties who receive this document should not rely on it, but should use it as a starting point of analysis, and should independently confirm the accuracy of the information contained herein through a due diligence review of the books, records, files and documents that constitute reliable sources of the information described herein.

Don Archer
Vice President

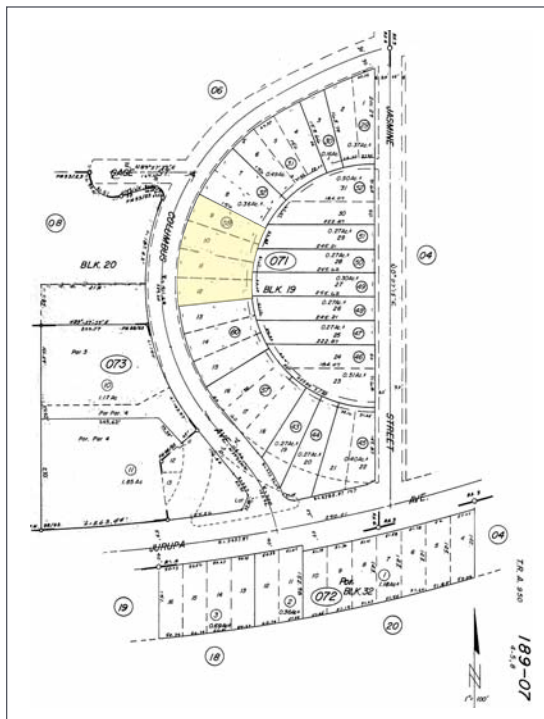
tel 951 346 0800
cell 714 235 8131
darcher@naicapital.com
DRE License #01393449

2280 Market Street
Suite 150
Riverside, California 92501
tel 951 346 0800
fax 951 346 0801

FOR SUBLEASE

6722 Columbus St.

Riverside, CA



NAI Capital

Commercial Real Estate Services, Worldwide.

No warranty, express or implied, is made as to the accuracy of the information contained herein. This information is submitted subject to errors, omissions, change of price, rental or other conditions, withdrawal without notice, and is subject to any special listing conditions imposed by our principals. Cooperating brokers, buyers, tenants and other parties who receive this document should not rely on it, but should use it as a starting point of analysis, and should independently confirm the accuracy of the information contained herein through a due diligence review of the books, records, files and documents that constitute reliable sources of the information described herein.

Don Archer
Vice President

tel 951 346 0800
cell 714 235 8131
darcher@naicapital.com
DRE License #01393449

2280 Market Street
Suite 150
Riverside, California 92501
tel 951 346 0800
fax 951 346 0801