

FOR LEASE

41 E. Foothill Boulevard

Arcadia, CA

Arcadia Professional Centre

HIGHLIGHTS

- Excellent location
- Garden Style Office Building with Beautiful Atrium
- Close to Many Amenities
- \$1.70 PSF, Full Service Gross
- Secure Building with 4/1000 Parking
- Excellent Location on Foothill Blvd., Just East of Santa Anita Ave.
- Easy Access to the 210 Freeway



AVAILABILITY

Suite	Size	Lease Rate	Lease Type
200A	1,090 SF	\$1.70* PSF	Full Service Gross

\$0.50 PSF Introductory Lease Rate



Commercial Real Estate Services, Worldwide.

No warranty, express or implied, is made as to the accuracy of the information contained herein. This information is submitted subject to errors, omissions, change of price, rental or other conditions, withdrawal without notice, and is subject to any special listing conditions imposed by our principals. Cooperating brokers, buyers, tenants and other parties who receive this document should not rely on it, but should use it as a starting point of analysis, and should independently confirm the accuracy of the information contained herein through a due diligence review of the books, records, files and documents that constitute reliable sources of the information described herein.

Marie Taylor

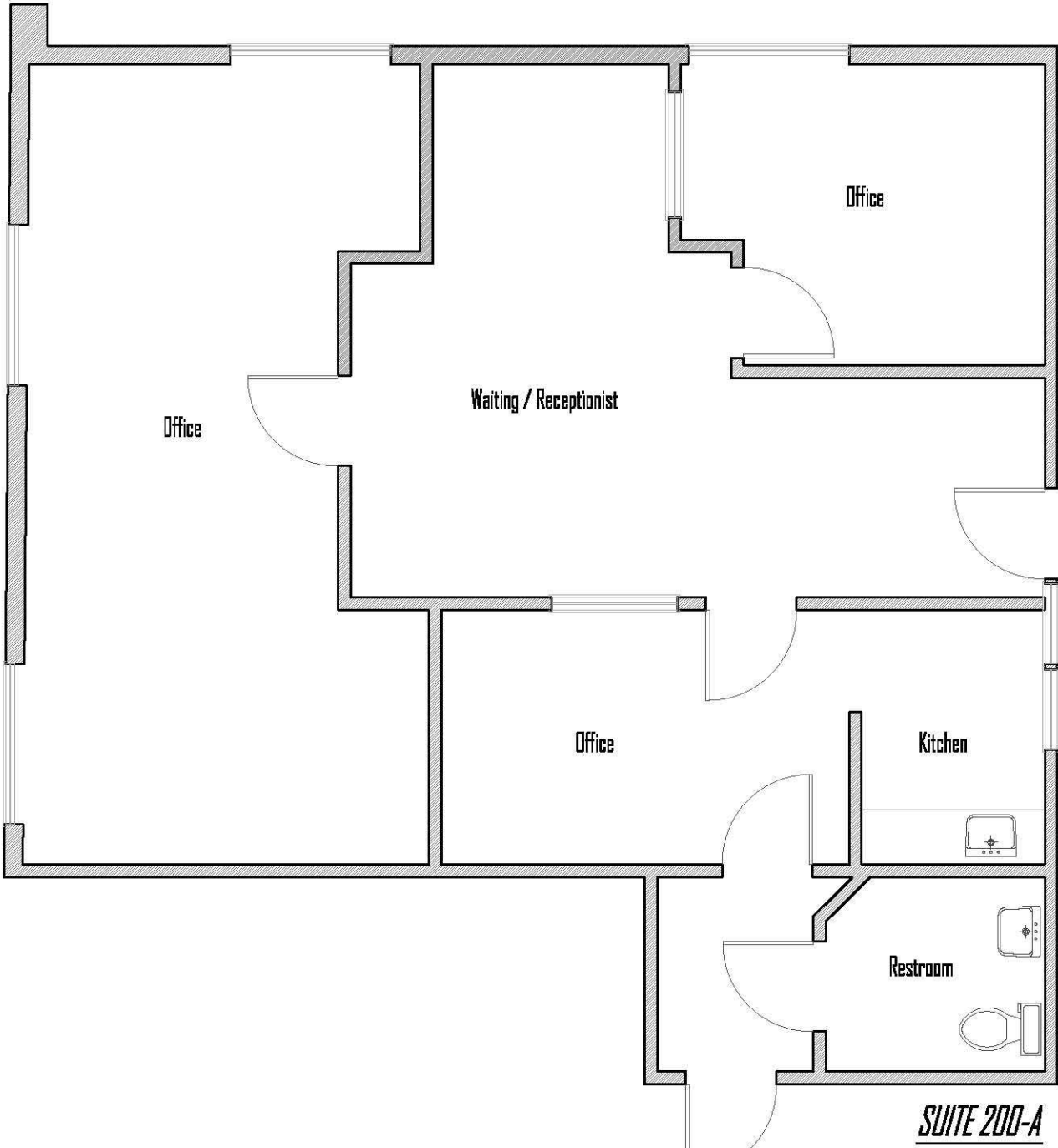
DRE Lic. #01233430
Direct: 626.204.1520
Mobile: 626.222.7449
mtaylor@naicapital.com

225 S. Lake Ave., Suite 1170
Pasadena, California 91101
tel 626 564 4800
fax 626 564 4846
www.naicapital.com

FOR LEASE

41 E. Foothill Boulevard

Arcadia, CA



NAI Capital

Commercial Real Estate Services, Worldwide.

No warranty, express or implied, is made as to the accuracy of the information contained herein. This information is submitted subject to errors, omissions, change of price, rental or other conditions, withdrawal without notice, and is subject to any special listing conditions imposed by our principals. Cooperating brokers, buyers, tenants and other parties who receive this document should not rely on it, but should use it as a starting point of analysis, and should independently confirm the accuracy of the information contained herein through a due diligence review of the books, records, files and documents that constitute reliable sources of the information described herein.

Marie Taylor

DRE Lic. #01233430
Direct: 626.204.1520
Mobile: 626.222.7449
mtaylor@naicapital.com

225 S. Lake Ave., Suite 1170
Pasadena, California 91101
tel 626 564 4800
fax 626 564 4846
www.naicapital.com