

COMFORT SUITES PROJECT

Selma, CA



Highlights:

- 109± All Suites, 2.16± Acres Land (Two Adjoining Parcels)
- Also Possible 87± rooms, with 2,400 SF Restaurant Pad
- Also Possible 55/65 Rooms Two Hotels on 1.08± Two Separate Lots
- Highway 99 Visible & Easy Access
- Selma: 12 Miles from Fresno, 22 Miles from Visalia on I-99
- 200 Miles from Los Angeles, 200 Miles from San Francisco
- Selma: Raisin Capital of World
- Entitled, Approved, Plans Approved. Building Permit Ready to Pull
- Centrally Located in New Developments
- Priced to Sell at \$1,490,000

Property Description

This is a approved proposed Comfort Suites in Selma. 109+ All Suites-Comfort Suites, closer to Holiday Inn Hotel, Super 8, Swedish Inn & several other hotels. This is an excellent opportunity for an investor to purchase a project that has been in the works for several years. All city and county requirements have been met and structural and civil plans are complete and approved. Building permit fees to be paid.

Area Description

The Development Site is located 12 miles south of Fresno and 22 miles north of Visalia, 17 miles from Hanford along Highway 99. Comfort Suites Selma will offer quick access to all attractions Yosemite National Park, Sequoia National Park, Sierra Summit (skiing), Wild Water Adventures Water Park, Hanford Speedway Fresno Fairgrounds, Chaffee Zoo, Roeding Park, Selland Arena, Badger Pass (skiing), Woodward Park, Metropolitan Museum, Fresno City College, and California State University Fresno. Just minutes away from major companies such as Sunmaid Raisin Plant and more!



Commercial Real Estate Services, Worldwide.

No warranty, express or implied, is made as to the accuracy of the information contained herein. This information is submitted subject to errors, omissions, change of price, rental or other conditions, withdrawal without notice, and is subject to any special listing conditions imposed by our principals. Cooperating brokers, buyers, tenants and other parties who receive this document should not rely on it, but should use it as a starting point of analysis, and should independently confirm the accuracy of the information contained herein through a due diligence review of the books, records, files and documents that constitute reliable sources of the information described herein.

Manoj Shah
Senior Vice President
 cell 626 215 0710
 direct 909 937 4072
 DRE Lic #01325787
 MShah@naicapital.com

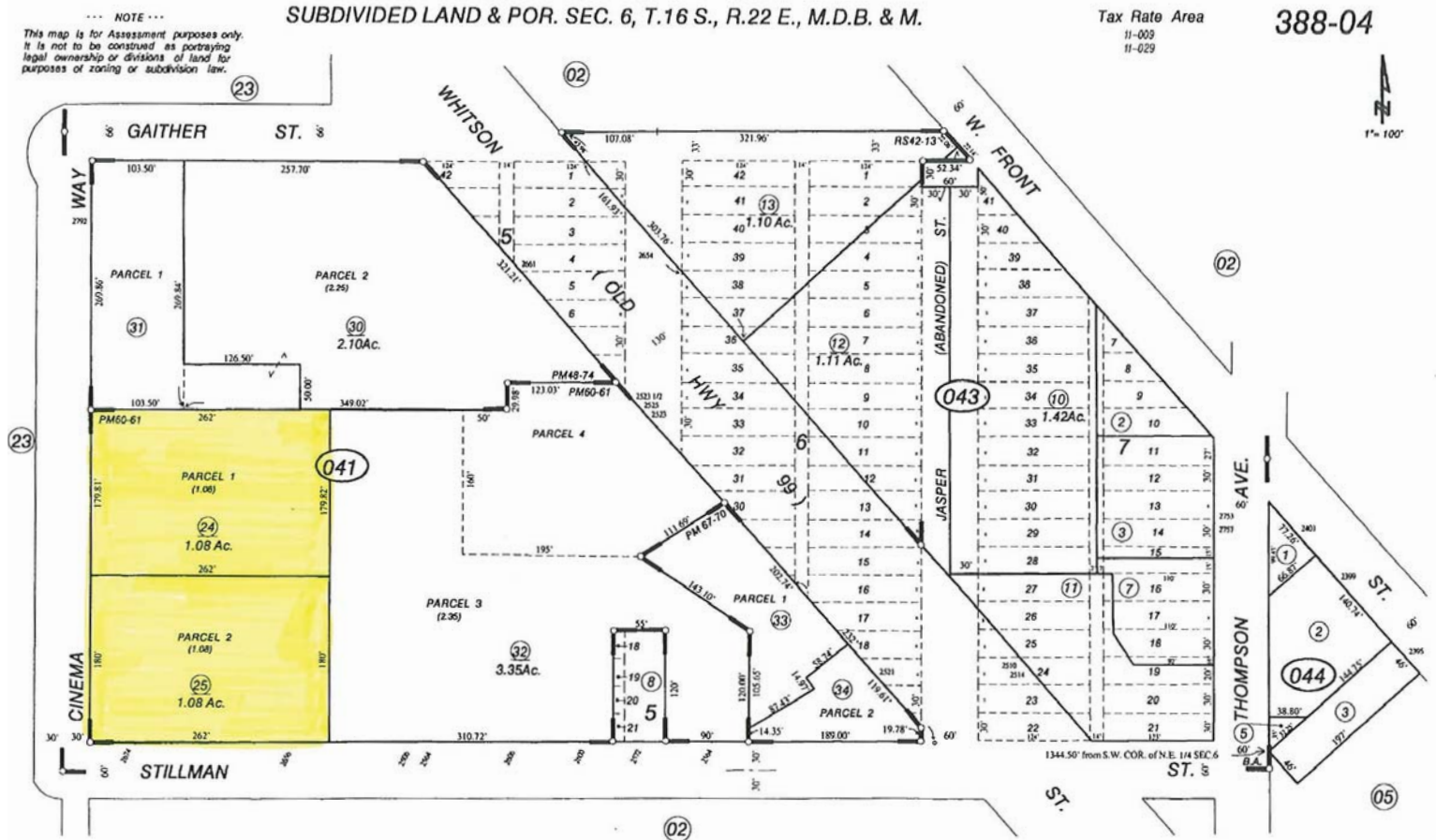
3281 E. Guasti Road
 Suite 225
 Ontario, CA 91761
 tel 909 945 2339
 fax 909 945 2338
 www.naicapital.com

Available For Sale

COMFORT SUITES PROJECT

Selma, CA

SITE PLAN



Commercial Real Estate Services, Worldwide.

No warranty, express or implied, is made as to the accuracy of the information contained herein. This information is submitted subject to errors, omissions, change of price, rental or other conditions, withdrawal without notice, and is subject to any special listing conditions imposed by our principals. Cooperating brokers, buyers, tenants and other parties who receive this document should not rely on it, but should use it as a starting point of analysis, and should independently confirm the accuracy of the information contained herein through a due diligence review of the books, records, files and documents that constitute reliable sources of the information described herein.

Manoj Shah
Senior Vice President
cell 626 215 0710
direct 909 937 4072
DRE Lic #01325787
MShah@naicapital.com

3281 E. Guasti Road
Suite 225
Ontario, CA 91761
tel 909 945 2339
fax 909 945 2338
www.naicapital.com