

La Cienega Gateway II

Ladera Heights, Los Angeles, CA

FOR LEASE
Retail/Restaurant Space



NEC La Cienega Boulevard and Centinela Avenue

HIGHLIGHTS

- New high profile corporate billboard development located at one of LA County's busiest travelled intersections, with over 97,000 cars per day
- La Cienega Gateway II will be 5,700 SF with 3,600 SF (divisible) of retail and 2,100 SF (divisible) of restaurant space
- Tremendous visibility when traveling from all directions with primary ingress and egress on both La Cienega Blvd. and Centinela Ave.
- Across the street from the highly successful Ladera Center, anchored by Ralph's, CVS Pharmacy, Ross Dress for Less, Petco, Wells Fargo, Bank of America, Chase and Union Bank. Other retailers at intersection include: Chuck E. Cheese, 99¢ Only Stores, Panda Express and T-Mobile
- Delivery: 4th Quarter 2015



DEMOGRAPHICS

	1 Miles	2 Miles	3 Miles
Population	38,709	112,459	260,340
Avg. HH Income	\$79,056	\$78,195	\$80,638
Employment	14,421	58,080	112,082

TRAFFIC COUNT

La Cienega Blvd. South of Centinela Ave.	64,867 CPD
Centinela Ave. West of La Cienega Blvd.	32,274 CPD
TOTAL:	97,141 CPD

NAICapital

Commercial Real Estate Services, Worldwide.

No warranty, express or implied, is made as to the accuracy of the information contained herein. This information is submitted subject to errors, omissions, change of price, rental or other conditions, withdrawal without notice, and is subject to any special listing conditions imposed by our principals. Cooperating brokers, buyers, tenants and other parties who receive this document should not rely on it, but should use it as a starting point of analysis, and should independently confirm the accuracy of the information contained herein through a due diligence review of the books, records, files and documents that constitute reliable sources of the information described herein.

For information, please contact your exclusive listing agent:

Steven H. Weiss
Senior Vice President
818.905.2400 x134
BRE #00680554
swiss@naicapital.com

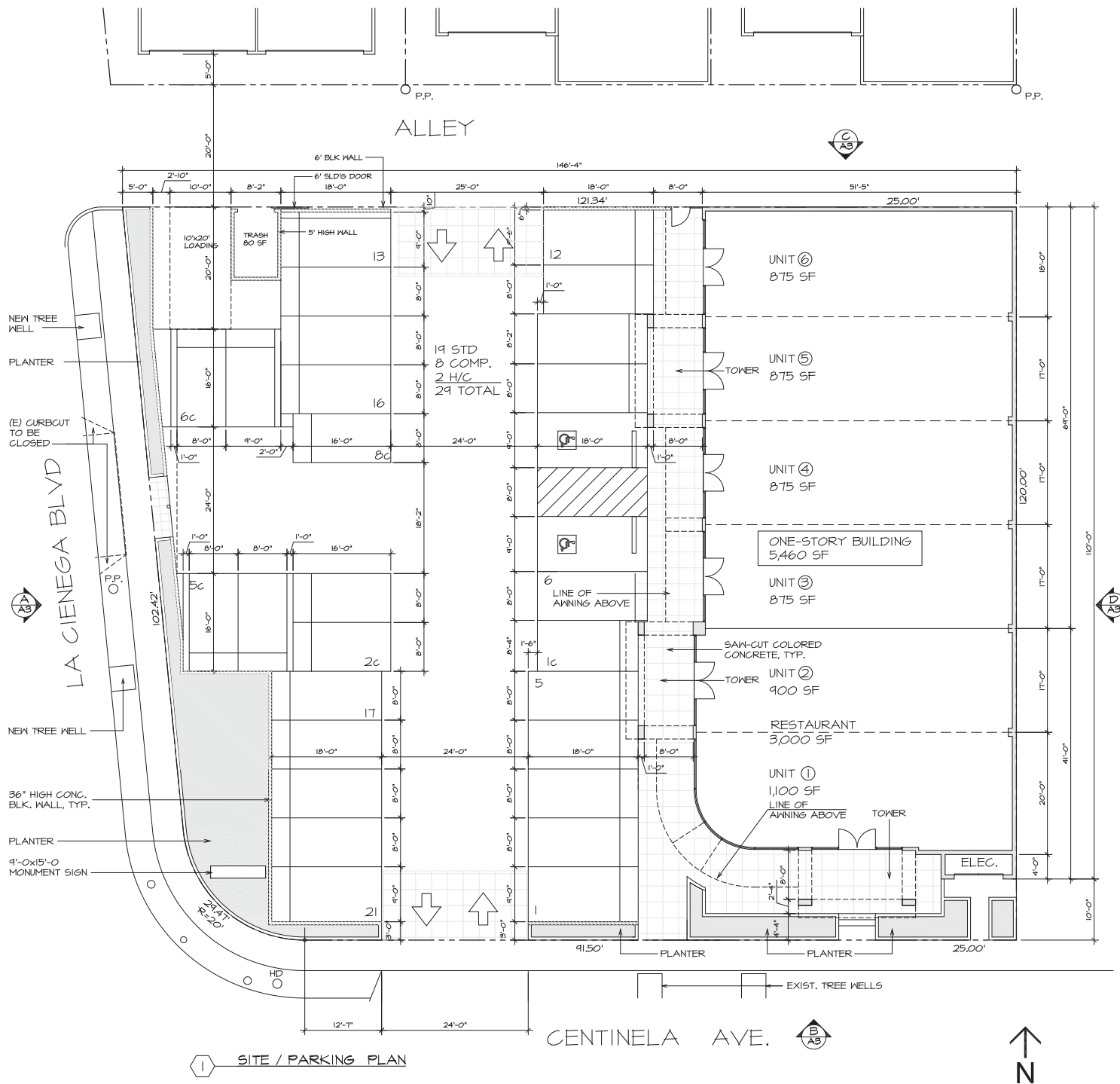
16001 Ventura Blvd.
Suite 200
Encino, California 91436
tel 818 905 2400
fax 818 905 2425

La Cienega Gateway II

Ladera Heights, Los Angeles, CA

FOR LEASE
Retail/Restaurant Space

Proposed Site Plan



NAI Capital
Commercial Real Estate Services, Worldwide.

No warranty, express or implied, is made as to the accuracy of the information contained herein. This information is submitted subject to errors, omissions, change of price, rental or other conditions, withdrawal without notice, and is subject to any special listing conditions imposed by our principals. Cooperating brokers, buyers, tenants and other parties who receive this document should not rely on it, but should use it as a starting point of analysis, and should independently confirm the accuracy of the information contained herein through a due diligence review of the books, records, files and documents that constitute reliable sources of the information described herein.

For information, please contact your exclusive listing agent:

Steven H. Weiss
Senior Vice President
818.905.2400 x134
BRE #00680554
swiss@naicapital.com

16001 Ventura Blvd.
Suite 200
Encino, California 91436
tel 818 905 2400
fax 818 905 2425